

FAP RTE.	SECTION	COUNTY	TOTAL SHEETS	SHEET NO
317	14RS-5,15RS-2	SCHUYLER	23	18
STA. 743+00		TO STA. 28+75		
FED. ROAD DIST. NO.	ILLINOIS	FED. AID PROJECT		

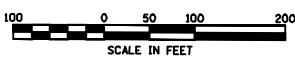
PLAN	SURVEYED	BY	DATE
	PLOTTED		
	CHECKED		
	DATE		
	NO.		

EXIST. CURVE CUR7
 PI STA. = 745+05.69
 $\Delta = 16^\circ 10' 08''$ (LT)
 $D = 10^\circ 01' 23''$
 $R = 571.65'$
 $T = 81.20'$
 $L = 161.32'$
 $E = 5.74'$
 $\theta = 3.6\%$
 $T.R. = 64'$
 $S.E. RUN = 140'$
 $P.C. STA. = 744+24.49$
 $P.T. STA. = 745+85.81$

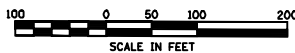
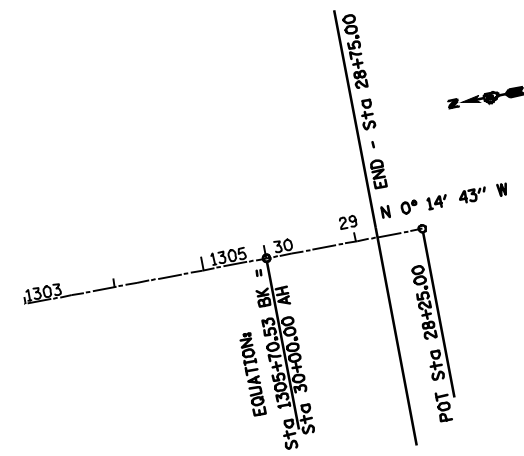
EXIST. CURVE CUR8
 PI STA. = 761+57.71
 $\Delta = 32^\circ 13' 41''$ (RT)
 $D = 10^\circ 59' 13''$
 $R = 521.49'$
 $T = 150.66'$
 $L = 293.33'$
 $E = 21.33'$
 $\theta = 3.6\%$
 $T.R. = 64'$
 $S.E. RUN = 140'$
 $P.C. STA. = 760+07.05$
 $P.T. STA. = 763+00.39$

EXIST. CURVE CUR9
 PI STA. = 1294+72.20
 $\Delta = 33^\circ 05' 00''$ (LT)
 $D = 10^\circ 58' 41''$
 $R = 521.91'$
 $T = 155.01'$
 $L = 301.36'$
 $E = 22.53'$
 $\theta = 3.6\%$
 $T.R. = 64'$
 $S.E. RUN = 140'$
 $P.C. STA. = 1293+17.19$
 $P.T. STA. = 1296+18.54$

CONTINUE 3' HMA SHLD THRU TANGENT SECTION BETWEEN CURVES - SHORT DISTANCE NO NEED TO STOP



PROFILE	SURVEYED	BY	DATE
	PLOTTED		
	CHECKED		
	DATE		
	NO.		



c:\pwworking\pwwid\tbl\AU\HL\NRL\dms266338p\om&p\dm.dgn
 11/11/2009 01:21:42PM
 *REF -
 *REF -