

STATE OF ILLINOIS
DEPARTMENT OF TRANSPORTATION
DIVISION OF HIGHWAYS

**PROPOSED
HIGHWAY PLANS**

FAP ROUTE 116 (IL 130)
SECTION (111,112,113-1)RS-6

RESURFACING
COLES & CUMBERLAND COUNTIES
C-97-093-07

F.A.P. RTE.	SECTION	COUNTY	TOTAL SHEETS	SHEET NO.
116	(111,112,113-1)RS-6	ILLINOIS	20	1
CONTRACT NO. 74262				

• COLES & CUMBERLAND COUNTIES
D-97-053-07

FOR INDEX OF SHEETS, SEE SHEET NO. 2

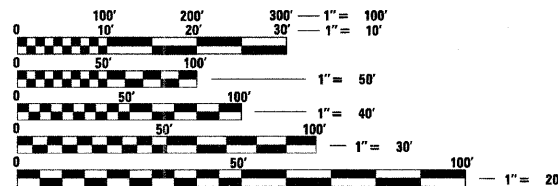
STATION EQUATIONS:

STA. 220+65.00 (BK) = STA. 219+77.00 (AH)
STA. 504+86.00 (BK) = STA. 0+00.00 (AH)

PAVING OMISSIONS:

STA. 179+00.00 TO STA. 182+99.20
STA. 252+00.00 TO STA. 257+41.00
STA. 266+50.00 TO STA. 270+00.00
STA. 374+72.84 TO STA. 376+35.15
STA. 449+15.00 TO STA. 451+52.00

2008 ADT = 2900

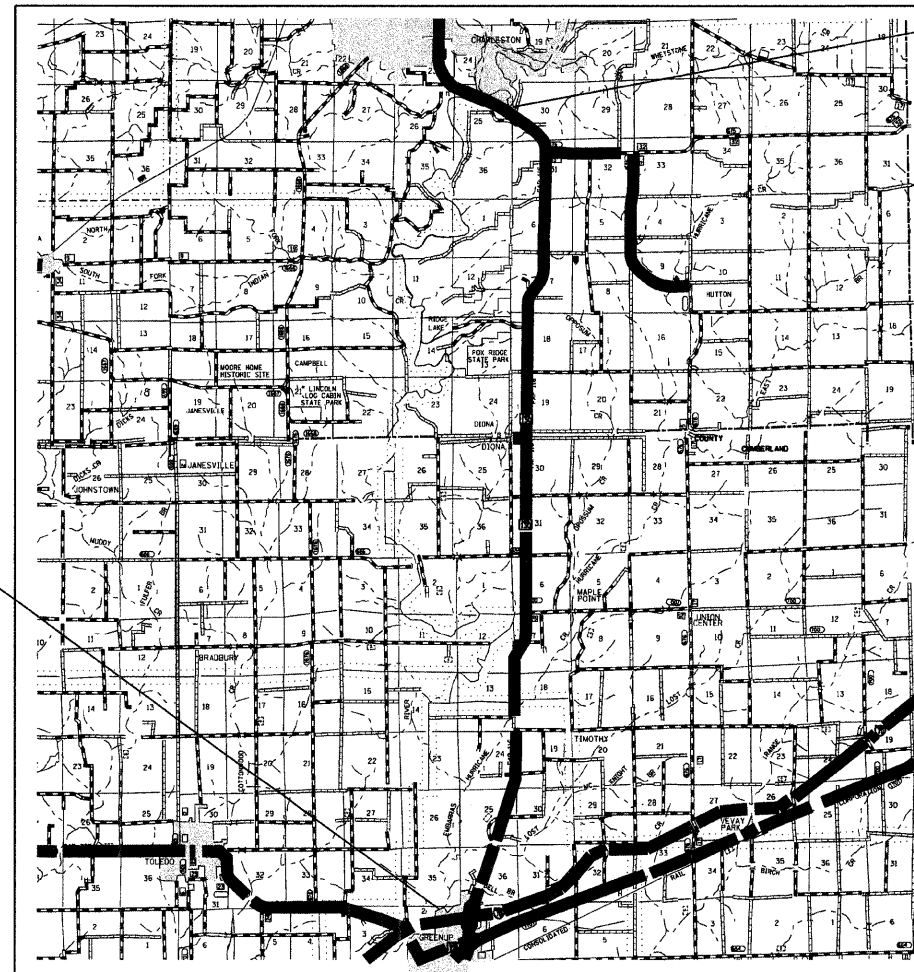


FULL SIZE PLANS HAVE BEEN PREPARED USING STANDARD ENGINEERING SCALES. REDUCED SIZED PLANS WILL NOT CONFORM TO STANDARD SCALES. IN MAKING MEASUREMENTS ON REDUCED PLANS, THE ABOVE SCALES MAY BE USED.

J.U.L.I.E.
JOINT UTILITY LOCATION INFORMATION FOR EXCAVATION
1-800-892-0123
OR 811

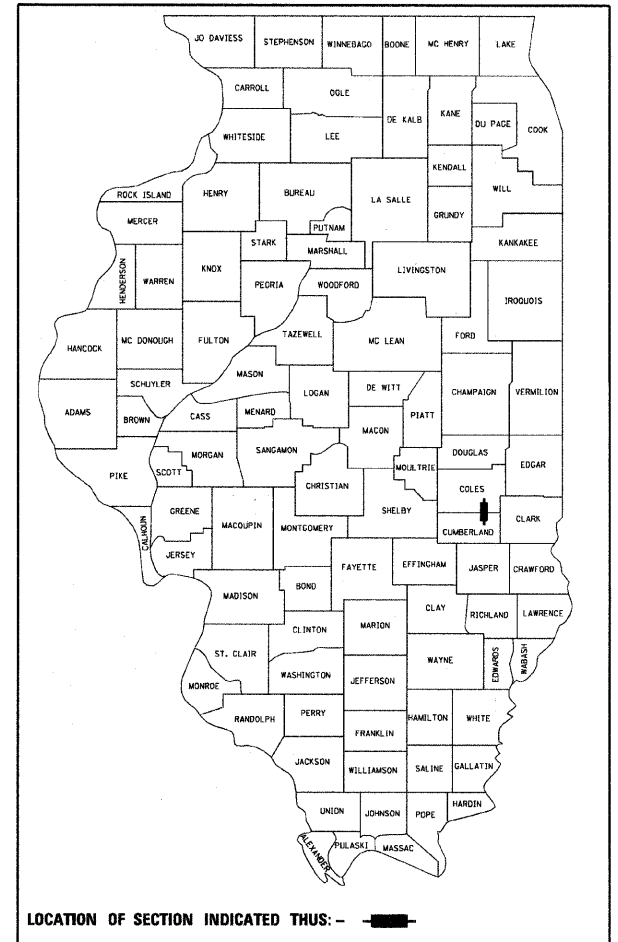
PROJECT ENGINEER: TOM RONAN
PROJECT MANAGER: JENNIFER WENTHE

CONTRACT NO. 74262



FAP ROUTE 116 (IL 130)
SECTION (111,112,113-1)RS-6
CUMBERLAND COUNTY
ENDS STATION 459+50.00

FAP ROUTE 116 (IL 130)
SECTION (111,112,113-1)RS-6
COLES COUNTY
BEGINS STA. 151+00.00



STATE OF ILLINOIS
DEPARTMENT OF TRANSPORTATION
DIVISION OF HIGHWAYS

SUBMITTED April 9 2009
Roger L. Schickel
DEPUTY DIRECTOR OF HIGHWAYS, REGION ENGINEER
May 1 2009
Charles J. Ingersoll
ENGINEER OF DESIGN AND ENVIRONMENT
May 1 2009
Christine M. Reed
DIRECTOR OF HIGHWAYS, CHIEF ENGINEER

PRINTED BY THE AUTHORITY
OF THE STATE OF ILLINOIS

GROSS LENGTH = 81,424.0 FT. = 15.42 MILE
NET LENGTH = 79,689.5 FT. = 15.09 MILE