

STATE OF ILLINOIS  
DEPARTMENT OF TRANSPORTATION  
DIVISION OF HIGHWAYS

**PROPOSED  
HIGHWAY PLANS**

FAP ROUTE 116 (IL 130)  
SECTION (111,112,113-1)RS-6

RESURFACING  
COLES & CUMBERLAND COUNTIES

C-97-093-07

F.A.P. RTE.	SECTION	COUNTY	TOTAL SHEETS	SHEET NO.
116	(111,112,113-1)RS-6	ILLINOIS	20	1
CONTRACT NO. 74262				

• COLES & CUMBERLAND COUNTIES

D-97-053-07

FOR INDEX OF SHEETS, SEE SHEET NO. 2

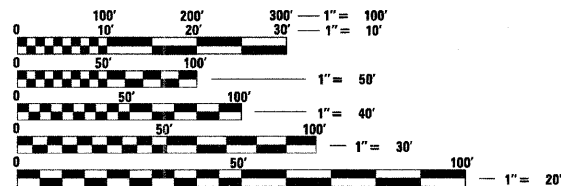
STATION EQUATIONS:

STA. 220+65.00 (BK) = STA. 219+77.00 (AH)  
STA. 504+86.00 (BK) = STA. 0+00.00 (AH)

PAVING OMISSIONS:

STA. 179+00.00 TO STA. 182+99.20  
STA. 252+00.00 TO STA. 257+41.00  
STA. 266+50.00 TO STA. 270+00.00  
STA. 374+72.84 TO STA. 376+35.15  
STA. 449+15.00 TO STA. 451+52.00

2008 ADT = 2900



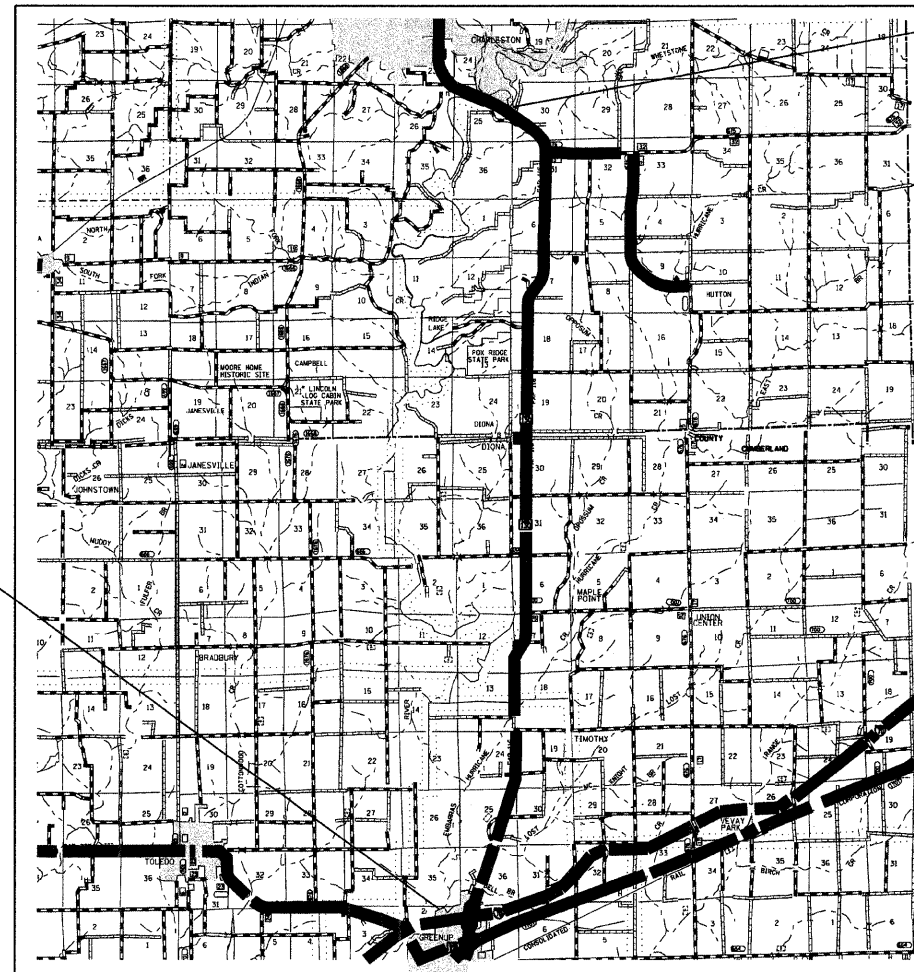
FULL SIZE PLANS HAVE BEEN PREPARED USING STANDARD ENGINEERING SCALES. REDUCED SIZED PLANS WILL NOT CONFORM TO STANDARD SCALES. IN MAKING MEASUREMENTS ON REDUCED PLANS, THE ABOVE SCALES MAY BE USED.

J.U.L.I.E.  
JOINT UTILITY LOCATION INFORMATION FOR EXCAVATION  
1-800-892-0123  
OR 811

PROJECT ENGINEER: TOM RONAN  
PROJECT MANAGER: JENNIFER WENTHE

CONTRACT NO. 74262

FAP ROUTE 116 (IL 130)  
SECTION (111,112,113-1)RS-6  
CUMBERLAND COUNTY  
ENDS STATION 459+50.00



GROSS LENGTH = 81,424.0 FT. = 15.42 MILE  
NET LENGTH = 79,689.5 FT. = 15.09 MILE

FAP ROUTE 116 (IL 130)  
SECTION (111,112,113-1)RS-6  
COLES COUNTY  
BEGINS STA. 151+00.00



STATE OF ILLINOIS  
DEPARTMENT OF TRANSPORTATION  
DIVISION OF HIGHWAYS

SUBMITTED April 9 2009  
Roger L. Schickel  
DEPUTY DIRECTOR OF HIGHWAYS, REGION ENGINEER  
May 1 2009  
Charles J. Ingersoll  
ENGINEER OF DESIGN AND ENVIRONMENT  
May 1 2009  
Christine M. Reed  
DIRECTOR OF HIGHWAYS, CHIEF ENGINEER

PRINTED BY THE AUTHORITY  
OF THE STATE OF ILLINOIS

## INDEX OF SHEETS

SHEET NO.	ITEM
1	COVER SHEET
2	INDEX OF SHEETS AND GENERAL NOTES
3	SUMMARY OF QUANTITIES
4-8	TYPICAL SECTIONS
9	DETAILS
10	LOCATION MAP
11-15	SCHEDULE OF QUANTITIES
16-17	ENTRANCE SCHEDULE
18	TIE POINTS
19-20	PAVEMENT MARKING DETAIL

THE FOLLOWING STANDARDS ARE A PART OF THESE PLANS AND ARE INCLUDED AFTER SHEET NO. 20:

STD. NO.	DESCRIPTION
000001-05	STANDARD SYMBOLS, ABBREVIATIONS AND PATTERNS
001006	DECIMAL OF AN INCH AND OF A FOOT
406201-01	MAILBOX TURNOUT
442201-03	CLASS C AND D PATCHES
482011-03	HMA SHLD. STRIPS/SHLDS. WITH RESURFACING OR WIDENING AND RESURFACING PROJECTS
701001-02	OFF-ROAD OPERATIONS, 2L, 2W, MORE THAN 15' AWAY
701006-03	OFF-RD OPERATIONS, 2L, 2W, 15' TO 24" FROM PAVEMENT EDGE
701011-02	OFF-RD MOVING OPERATIONS, 2L, 2W, DAY ONLY
701301-03	LANE CLOSURE, 2L, 2W, SHORT TIME OPERATIONS
701306-02	LANE CLOSURE, 2L, 2W, SLOW MOVING OPERATIONS DAY ONLY, FOR SPEEDS >= 45 MPH
701311-03	LANE CLOSURE 2L, 2W, MOVING OPERATIONS - DAY ONLY
701336-05	LANE CLOSURE, 2L, 2W, WORK AREAS IN SERIES, FOR SPEEDS >= 45 MPH
701901-01	TRAFFIC CONTROL DEVICES
780001-02	TYPICAL PAVEMENT MARKINGS
781001-03	TYPICAL APPLICATIONS RAISED REFLECTIVE PAVEMENT MARKERS

## GENERAL NOTES

THIS SECTION SHALL BE CONSTRUCTED IN ACCORDANCE WITH THE PLANS; THE "STANDARD SPECIFICATIONS FOR ROAD AND BRIDGE CONSTRUCTION" ADOPTED JANUARY 1, 2007; AND THE SPECIAL PROVISIONS INCLUDED IN THE PROPOSAL.

THIS PROJECT IS LOCATED ON FAP ROUTE 116 (IL 130) IN COLES AND CUMBERLAND COUNTIES, FROM 1.8 MILES SOUTH OF IL 16 AT CHARLESTON TO MARY LANE IN GREENUP. THE WORK INCLUDED IN SECTION (111,112,113-1)RS-6 CONSISTS OF PAVEMENT PATCHING, MILLING, HOT-MIX ASPHALT RESURFACING, AGGREGATE SHOULDERS, PAVEMENT MARKING, AND ANY OTHER WORK NECESSARY TO COMPLETE THE SECTION.

PAVEMENT MARKING SHALL BE APPLIED IN ACCORDANCE WITH SECTION 780 OF THE STANDARD SPECIFICATIONS. SHORT TERM PAVEMENT MARKING SHALL BE APPLIED TO THE MILLED SURFACE, BITUMINOUS MATERIALS (PRIME COAT), AND HOT-MIX ASPHALT SURFACE COURSE AS SPECIFIED IN SECTION 703 OF THE STANDARD SPECIFICATIONS. TEMPORARY TAPE SHALL BE USED ON THE SURFACE COURSE AND PAINT SHALL BE USED ON MILLED SURFACES.

THE TOTAL QUANTITY OF PAINT PAVEMENT MARKING-LINE 4" CONSISTS OF 153,777 FEET OF WHITE AND 58,647 FEET OF YELLOW.

THE TOTAL QUANTITY OF THERMOPLASTIC PAVEMENT MARKING-LINE 4" CONSISTS OF 6,606 FEET OF WHITE AND 8,150 FEET OF YELLOW.

THE TOTAL QUANTITY OF THERMOPLASTIC PAVEMENT MARKING-LINE 6" CONSISTS OF 1,057 FEET OF WHITE.

THE TOTAL QUANTITY OF THERMOPLASTIC PAVEMENT MARKING-LINE 12" CONSISTS OF 256 FEET OF YELLOW.

THE TOTAL QUANTITY OF THERMOPLASTIC PAVEMENT MARKING-LETTERS AND SYMBOLS CONSISTS OF 94 SQ FEET OF WHITE.

THE TOTAL QUANTITY OF RAISED REFLECTIVE PAVEMENT MARKERS IS 20 ONE-WAY CRYSTAL, 49 ONE-WAY AMBER, AND 981 TWO-WAY AMBER.

THE MATERIAL USED FOR AGGREGATE SHOULDERS, TYPE B SHALL BE CRUSHED STONE, CRUSHED CONCRETE, OR RAP. THE MATERIAL USED FOR AGGREGATE SURFACE COURSE, TYPE B SHALL BE CRUSHED STONE OR CRUSHED CONCRETE.

THE EXISTING PAVEMENT SHALL BE PATCHED IN ACCORDANCE WITH SECTION 442 OF THE STANDARD SPECIFICATIONS AND THE SPECIAL PROVISIONS. THE QUANTITY OF PATCHING SHOWN ON THE PLANS IS AN ESTIMATE ONLY AND THE FINAL LOCATIONS AND QUANTITY SHALL BE DETERMINED BY THE ENGINEER IN THE FIELD.

## GENERAL NOTES (Cont'd)

THE REMOVAL OF THE EXISTING RESURFACING IN THE GUTTER FLAG SHALL BE INCLUDED IN THE COST OF BITUMINOUS SURFACE REMOVAL 3 3/4".

THE PAY ITEM TEMPORARY RAMP HAS BEEN INCLUDED FOR THE CONSTRUCTION OF TEMPORARY RAMPS IN ACCORDANCE WITH ARTICLE 406.08 OF THE STANDARD SPECIFICATIONS. THE COST SHALL INCLUDE BOTH THE INSTALLATION AND THE REMOVAL OF THE TEMPORARY RAMPS.

TEMPORARY TAPERS WILL BE REQUIRED AFTER THE BITUMINOUS SURFACE REMOVAL OPERATION HAS BEEN PERFORMED AND ANY SUBSEQUENT RESURFACING OPERATION NEEDING TEMPORARY TAPERS. THE CONTRACTOR SHALL CONSTRUCT TEMPORARY TAPERS (MIN. 2 FEET IN LENGTH) AT ENTRANCES IN GUTTER AND CURB AND GUTTER AREAS.

THE RESIDENT ENGINEER SHALL BE THE SOLE JUDGE CONCERNING THE CURING TIME FOR THE VARIOUS HOT-MIX ASPHALT LIFTS.

THE CONTRACTOR SHALL PROVIDE INTERNET ACCESSIBILITY TO THE HOT-MIX ASPHALT PLANT QUALITY CONTROL LAB SO THAT HOT-MIX ASPHALT PLANT REPORTS CAN BE E-MAILED TO THE DISTRICT HEADQUARTERS. THIS WORK SHALL BE INCLUDED IN THE COST OF ALL HOT-MIX ASPHALT ITEMS.

THE CONTRACTOR SHALL USE EITHER RC-70 OR AN EMULSIFIED POLYMER PRIME SS-1HP FOR THE PAY ITEM BITUMINOUS MATERIALS (PRIME COAT).

A UNIFORMLY STRAIGHT SAW CUT SHALL BE MADE AT LOCATIONS WHERE PROPOSED NEW CONSTRUCTION WILL ABUT EXISTING HOT-MIX ASPHALT SURFACES. THE SAW CUT SHALL BE MADE FULL DEPTH THROUGH THE EXISTING SURFACE. THIS WORK WILL BE CONSIDERED INCLUDED IN THE COST OF THE CONTRACT ITEMS INVOLVED AND NO EXTRA COMPENSATION WILL BE ALLOWED.

THE PAY ITEMS HOT-MIX ASPHALT SURFACE REMOVAL 2 1/4" AND HOT-MIX ASPHALT SURFACE REMOVAL 3 3/4" ASSUMES USING TWO PASSES TO ALLEVIATE THE 2" LANE DIFFERENTIAL.

THE FOLLOWING MIXTURE REQUIREMENTS ARE APPLICABLE FOR THIS PROJECT:

MIXTURE USE: SURFACE COURSE (NORTH OF STATION 433+20)  
 PG GRADE: PG 64-22  
 DESIGN AIR VOIDS: 4.0% @ NDESIGN = 70  
 MIXTURE COMPOSITION: IL-9.5  
 FRICTION AGGREGATE: MIXTURE C

MIXTURE USE: LEVEL BINDER (NORTH OF STATION 433+20)  
 PG GRADE: PG 64-22  
 DESIGN AIR VOIDS: 4.0% @ NDESIGN = 70  
 MIXTURE COMPOSITION: IL-9.5  
 FRICTION AGGREGATE: N/A

MIXTURE USE: SURFACE COURSE (STA. 433+20 TO STA. 459+50)  
 PG GRADE: SBS PG 70-22  
 DESIGN AIR VOIDS: 4% @ NDESIGN = 90  
 MIXTURE COMPOSITION: IL-9.5  
 FRICTION AGGREGATE: MIXTURE C

MIXTURE USE: LEVEL BINDER (STA. 433+20 TO STA. 459+50)  
 PG GRADE: PG 64-22  
 DESIGN AIR VOIDS: 4.0% @ NDESIGN = 90  
 MIXTURE COMPOSITION: IL-9.5  
 FRICTION AGGREGATE: N/A

MIXTURE USE: SHOULDERS  
 PG GRADE: PG 64-22  
 DESIGN AIR VOIDS: 4.0% @ NDESIGN = 70  
 MIXTURE COMPOSITION: IL-9.5  
 FRICTION AGGREGATE: MIXTURE C

MIXTURE USE: INCIDENTAL CLASS D PATCHING  
 PG GRADE: PG 64-22 PG 64-22  
 DESIGN AIR VOIDS: 4.0% @ NDESIGN = 50 4.0% @ NDESIGN = 70  
 MIXTURE COMPOSITION: IL-9.5 IL-19.0  
 FRICTION AGGREGATE: MIXTURE C N/A

THE FOLLOWING RATES OF APPLICATION HAVE BEEN USED IN THE CALCULATING PLAN QUANTITIES:

AGGREGATE SURFACE COURSE	2.05 TONS/CU YD
AGGREGATE SHOULDERS	2.05 TONS/CU YD
BITUMINOUS MATERIALS (PRIME COAT)	0.10 GAL/SQ YD
AGGREGATE (PRIME COAT)	4 LBS/SQ YD
HOT-MIX ASPHALT	112 LBS/SQ YD/INCH

• COLES AND CUMBERLAND COUNTIES

FILE NAME =	USER NAME = swartzr	DESIGNED -	REVISED -	<b>STATE OF ILLINOIS DEPARTMENT OF TRANSPORTATION</b>	<b>INDEX - GENERAL NOTES</b>	F.A.P. RTE.	SECTION	COUNTY	TOTAL SHEETS	SHEET NO.	
ct:\pwork\pvidot\swartzr\1119058\1774262-shr-index.dgn		DRAWN -	REVISED -			116	(111,112,113-1)RS-6		20	2	
PLOT SCALE = 40.0000' / IN.		CHECKED -	REVISED -			CONTRACT NO. 74262					
PLOT DATE = 4/10/2009		DATE -	REVISED -			SCALE: NA	SHEET NO. 1 OF 1 SHEETS	STA. TO STA.	ILLINOIS FED. AID PROJECT		

SUMMARY OF QUANTITIES			100% STATE	CONSTRUCTION TYPE CODES		
CODE NO	ITEM	UNIT	TOTAL QUANTITIES	URBAN COLES	RURAL COLES	RURAL CUMBERLAND
				I000	I000	I000
40200800	AGGREGATE SURFACE COURSE, TYPE B	TON	138		54	84
40600100	BITUMINOUS MATERIALS (PRIME COAT)	GALLON	24800	1978	9203	13619
40600300	AGGREGATE (PRIME COAT)	TON	497	40	184	273
40600635	LEVELING BINDER (MACHINE METHOD), N70	TON	9446	582	3754	5110
40600645	LEVELING BINDER (MACHINE METHOD), N90	TON	369			369
40600895	CONSTRUCTING TEST STRIP	EACH	1			1
40600982	HOT-MIX ASPHALT SURFACE REMOVAL - BUTT JOINT	SQ YD	847	273		574
40600990	TEMPORARY RAMP	SQ YD	646	117	120	409
40603315	HOT-MIX ASPHALT SURFACE COURSE, MIX "C", N70	TON	18923	1169	7508	10246
40603520	POLYMERIZED HOT-MIX ASPHALT SURFACE COURSE, MIX "C", N90	TON	739			739
40800050	INCIDENTAL HOT-MIX ASPHALT SURFACING	TON	388	37	176	175
44000155	HOT-MIX ASPHALT SURFACE REMOVAL, 1 1/2"	SQ YD	11169	3910	1941	5318
44000158	HOT-MIX ASPHALT SURFACE REMOVAL, 2 1/4"	SQ YD	30341	14355	7089	8897
44000164	HOT-MIX ASPHALT SURFACE REMOVAL, 3 3/4"	SQ YD	31386		7090	24296
44000198	HOT-MIX ASPHALT SURFACE REMOVAL, VARIABLE DEPTH	SQ YD	180105	5155	77848	97102
44201803	CLASS D PATCHES, TYPE II, 13 INCH	SQ YD	1961	67	498	1396
44201807	CLASS D PATCHES, TYPE III, 13 INCH	SQ YD	319	18	15	286
44201809	CLASS D PATCHES, TYPE IV, 13 INCH	SQ YD	1272	79	438	755
48101200	AGGREGATE SHOULDERS, TYPE B	TON	4003	66	1698	2239
48203100	HOT-MIX ASPHALT SHOULDERS	TON	1286	574	253	459
67000400	ENGINEER'S FIELD OFFICE, TYPE A	CAL MO	5	1	2	2
67100100	MOBILIZATION	L SUM	1	0.1	0.4	0.5
70100460	TRAFFIC CONTROL AND PROTECTION, STANDARD 701306	L SUM	1	0.1	0.4	0.5
70100500	TRAFFIC CONTROL AND PROTECTION, STANDARD 701326	L SUM	1	0.1	0.4	0.5
70300100	SHORT-TERM PAVEMENT MARKING	FOOT	31552	1920	12336	17296
70300210	TEMPORARY PAVEMENT MARKING - LETTERS AND SYMBOLS	SQ FT	94		31	63
70300220	TEMPORARY PAVEMENT MARKING - LINE 4"	FOOT	227180	12898	86962	127320
70300240	TEMPORARY PAVEMENT MARKING - LINE 6"	FOOT	1057		605	452
70300260	TEMPORARY PAVEMENT MARKING - LINE 12"	FOOT	256		256	
70301000	WORK ZONE PAVEMENT MARKING REMOVAL	SQ FT	2629	160	872	1597
* 78000100	THERMOPLASTIC PAVEMENT MARKING - LETTERS AND SYMBOLS	SQ FT	94		31	63
* 78000200	THERMOPLASTIC PAVEMENT MARKING - LINE 4"	FOOT	14756		7171	7585
* 78000400	THERMOPLASTIC PAVEMENT MARKING - LINE 6"	FOOT	1057		605	452
* 78000600	THERMOPLASTIC PAVEMENT MARKING - LINE 12"	FOOT	256		256	
* 78001110	PAINT PAVEMENT MARKING - LINE 4"	FOOT	212424	12898	79791	119735
* 78100100	RAISED REFLECTIVE PAVEMENT MARKER	EACH	1050	61	446	543
Z0025500	FURNISHING AND INSTALLING PROPERTY MARKERS	EACH	12		4	8

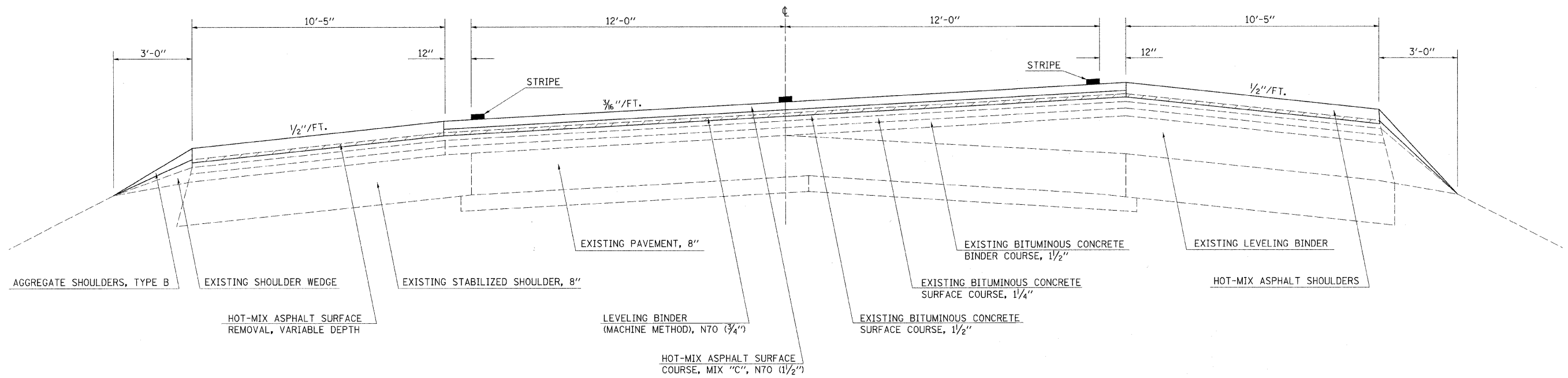
\* SPECIALTY ITEMS

• COLES AND CUMBERLAND COUNTIES

FILE NAME =	USER NAME = swartzw	DESIGNED -	REVISED -	<b>STATE OF ILLINOIS DEPARTMENT OF TRANSPORTATION</b>	<b>SUMMARY OF QUANTITIES</b>		F.A.P. RTE.	SECTION	COUNTY	TOTAL SHEETS	SHEET NO.
c:\pwwork\pwwork\swartzw\d0119058\d774262-shr-soq.dgn		DRAWN -	REVISED -				116	(111,112,113-1)RS-6	•	20	3
PLOT SCALE = 40,0000' / IN.		CHECKED -	REVISED -				CONTRACT NO. 74262				
PLOT DATE = 4/10/2009		DATE -	REVISED -				SCALE: NA	SHEET NO. 1 OF 1 SHEETS	STA. TO STA.	ILLINOIS FED. AID PROJECT	

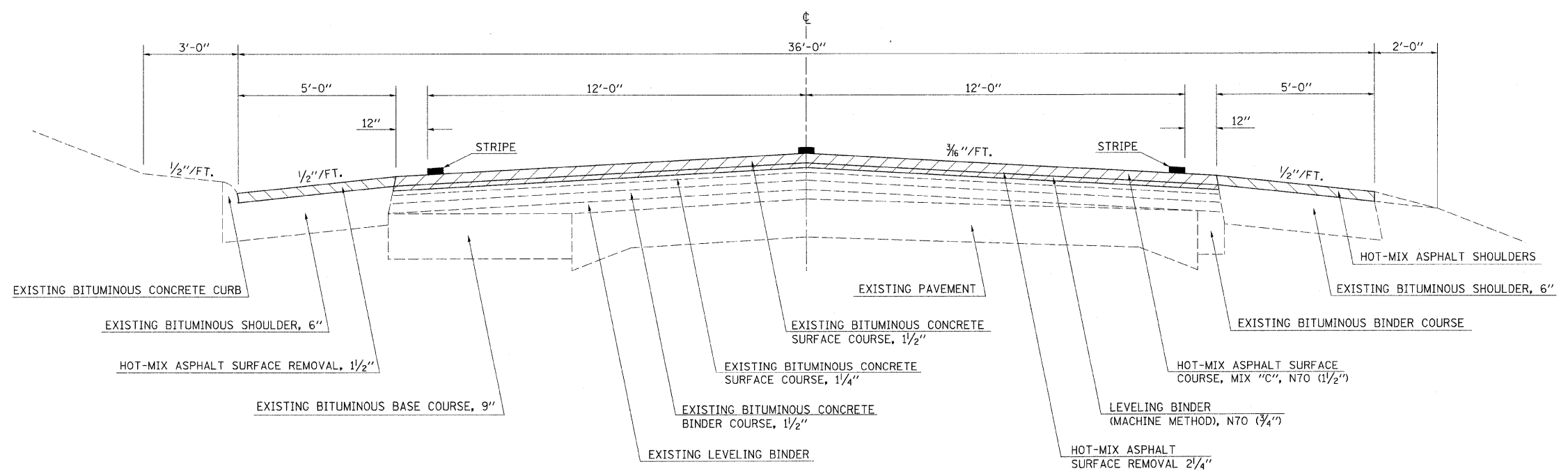
### TYPICAL CROSS SECTION

STATION 151+00.00 TO STATION 157+50.00 (COLES COUNTY)



### TYPICAL CROSS SECTION

STATION 157+50 TO STATION 172+50 (COLES COUNTY)



FILE NAME =	USER NAME = swartzrw
c:\pwork\pwidot\swartzrw\d8119058\d7	4262-sht-typicals.dgn
PLOT SCALE = 20.0000' / IN.	
PLOT DATE = 4/18/2009	

DESIGNED -	REVISED -
DRAWN -	REVISED -
CHECKED -	REVISED -
DATE -	REVISED -

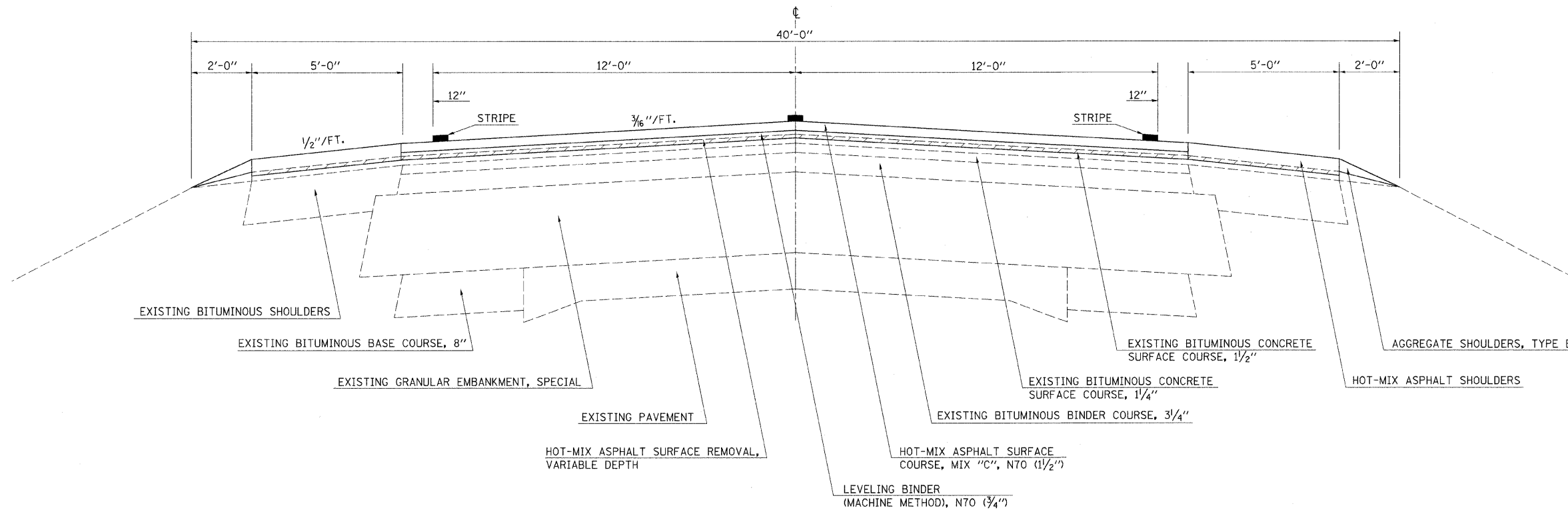
**STATE OF ILLINOIS  
DEPARTMENT OF TRANSPORTATION**

SCALE: NA		SHEET NO. 1 OF 5 SHEETS		STA. TO STA.	
-----------	--	-------------------------	--	--------------	--

COLES AND CUMBERLAND COUNTIES					
F.A.P. RTE.	SECTION	COUNTY	TOTAL SHEETS	SHEET NO.	
116	(111,112,113-1)RS-6	*	20	4	
CONTRACT NO. 74262					
ILLINOIS FED. AID PROJECT					

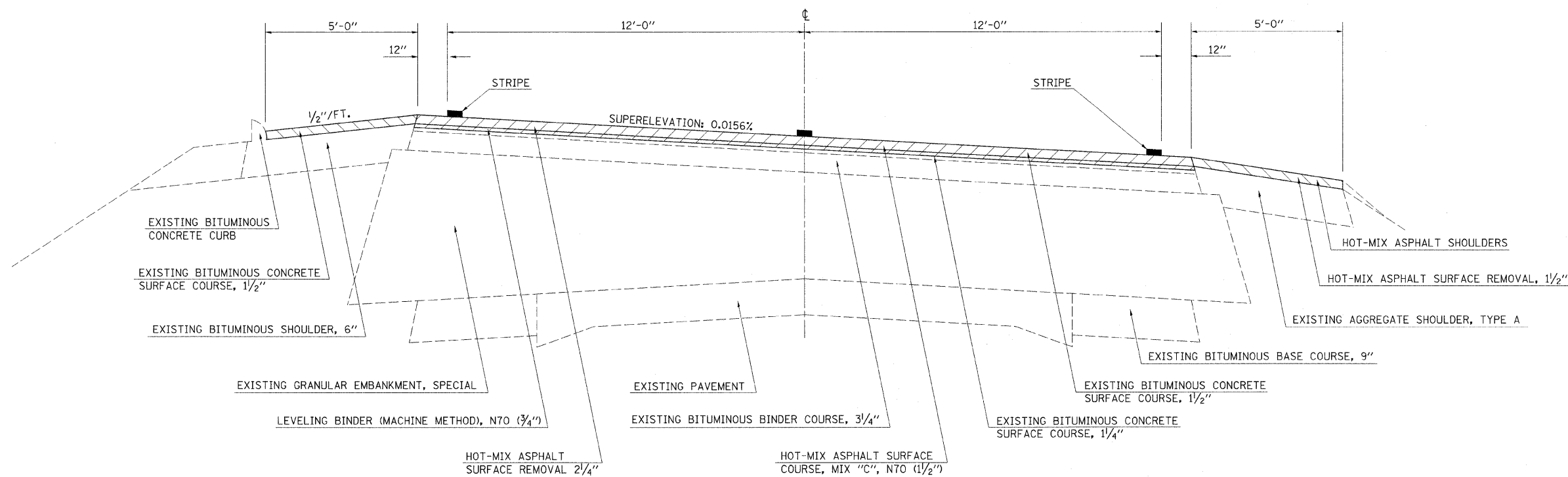
### TYPICAL CROSS SECTION

STATION 172+50 TO STATION 179+00 (COLES COUNTY)



### TYPICAL CROSS SECTION

STATION 182+99.20 TO STATION 192+50.00 (COLES COUNTY)



FILE NAME =	USER NAME = swartzrw	DESIGNED -	REVISED -
c:\pwork\pwork\SWARTZRW\d8119050\d77	4262-sht-typicals.dgn	DRAWN -	REVISED -
	PLOT SCALE = 20.0000 1/ IN.	CHECKED -	REVISED -
	PLOT DATE = 4/19/2009	DATE -	REVISED -

**STATE OF ILLINOIS  
DEPARTMENT OF TRANSPORTATION**

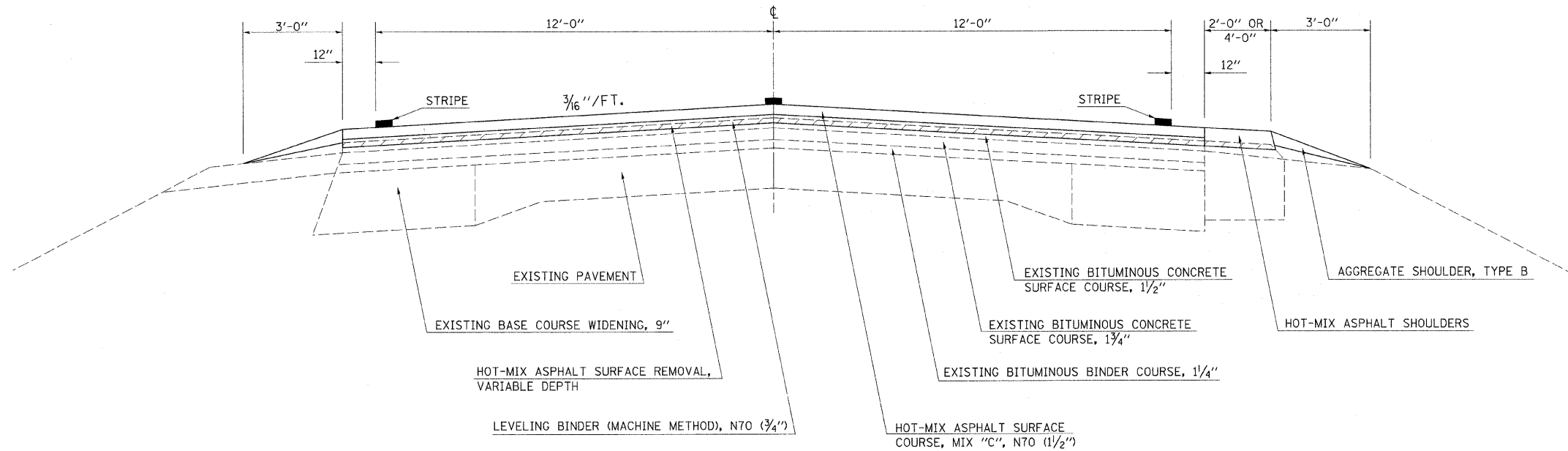
<b>TYPICAL CROSS SECTIONS</b>	
SCALE: NA	SHEET NO. 2 OF 5 SHEETS STA. TO STA.

• COLES AND CUMBERLAND COUNTIES				
F.A.P. RTE.	SECTION	COUNTY	TOTAL SHEETS	SHEET NO.
116	(111,112,113-1)RS-6		20	5
			CONTRACT NO. 74262	
ILLINOIS FED. AID PROJECT				



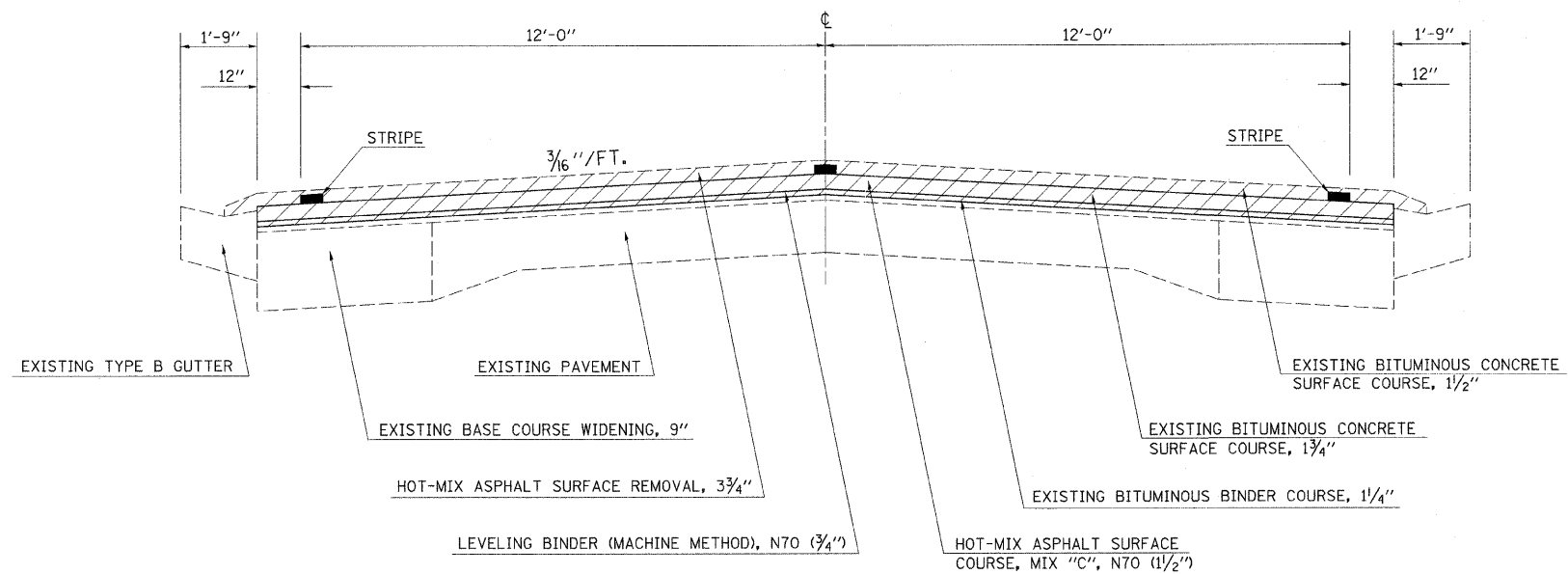
### TYPICAL CROSS SECTION

STATION 357+22 TO STATION 368+67 (COLES COUNTY)      STATION 266+22 TO STATION 270+86 (CUMBERLAND COUNTY)  
 STATION 379+00 TO STATION 388+52 (COLES COUNTY)  
 STATION 439+30 TO STATION 442+56 (COLES COUNTY)



### TYPICAL CROSS SECTION

STATION 408+50 TO STATION 412+60 (COLES COUNTY)      STATION 221+30 TO STATION 237+50 (CUMBERLAND COUNTY)  
 STATION 441+50 TO STATION 453+88 (COLES COUNTY)      STATION 275+00 TO STATION 290+00 (CUMBERLAND COUNTY)  
 STATION 468+50 TO STATION 472+30 (COLES COUNTY)      STATION 292+75 TO STATION 299+50 (CUMBERLAND COUNTY)  
 STATION 345+20 TO STATION 352+50 (CUMBERLAND COUNTY)  
 STATION 393+60 TO STATION 417+80 (CUMBERLAND COUNTY)  
 STATION 421+00 TO STATION 427+85 (CUMBERLAND COUNTY)



FILE NAME =	USER NAME = swartzrw	DESIGNED -	REVISED -
ct:\pwork\PWIDOT\SWARTZRW\d0119058\d7	4262-sht-typicals.dgn	DRAWN -	REVISED -
	PLOT SCALE = 20,000' / IN.	CHECKED -	REVISED -
	PLOT DATE = 4/10/2009	DATE -	REVISED -

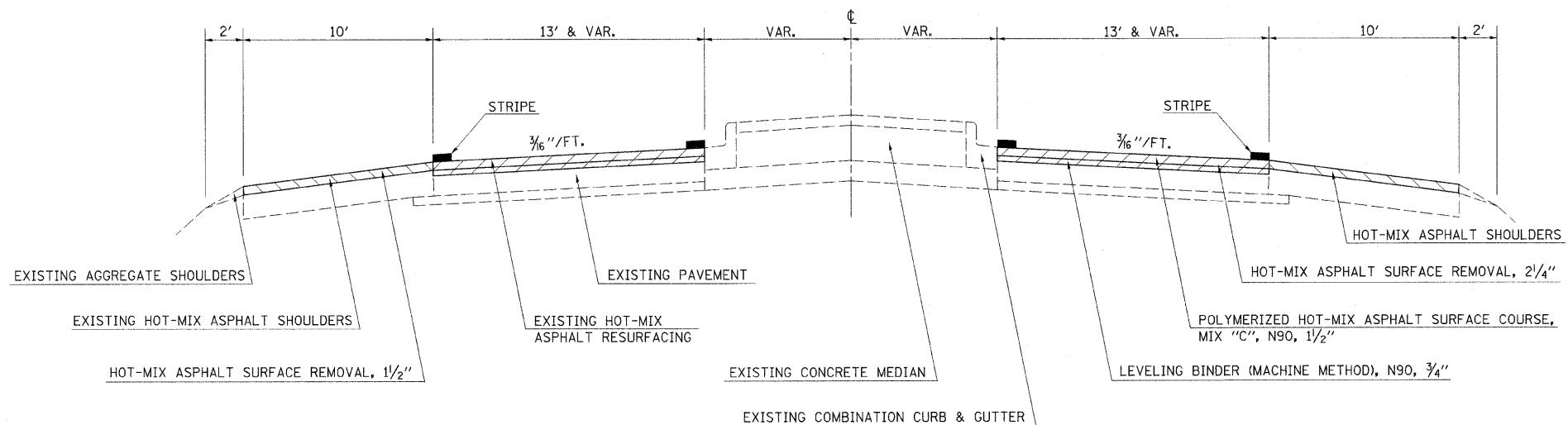
**STATE OF ILLINOIS**  
**DEPARTMENT OF TRANSPORTATION**

<b>TYPICAL CROSS SECTIONS</b>	
SCALE: NA	SHEET NO. 4 OF 5 SHEETS
STA.	TO STA.

• COLES AND CUMBERLAND COUNTIES				
F.A.P. RTE.	SECTION	COUNTY	TOTAL SHEETS	SHEET NO.
116	(111,112,113-1)RS-6		20	7
CONTRACT NO. 74262				
ILLINOIS FED. AID PROJECT				

# TYPICAL CROSS SECTION

STATION 433+20 TO STATION 459+50



FILE NAME =	USER NAME = swartzrw	DESIGNED -	REVISED -
c:\pwork\PWIDOT\SWARTZRW\d0119058\d7	4262-sht-typicals.dgn	DRAWN -	REVISED -
	PLOT SCALE = 20.0000' / IN.	CHECKED -	REVISED -
	PLOT DATE = 4/10/2009	DATE -	REVISED -

STATE OF ILLINOIS  
DEPARTMENT OF TRANSPORTATION

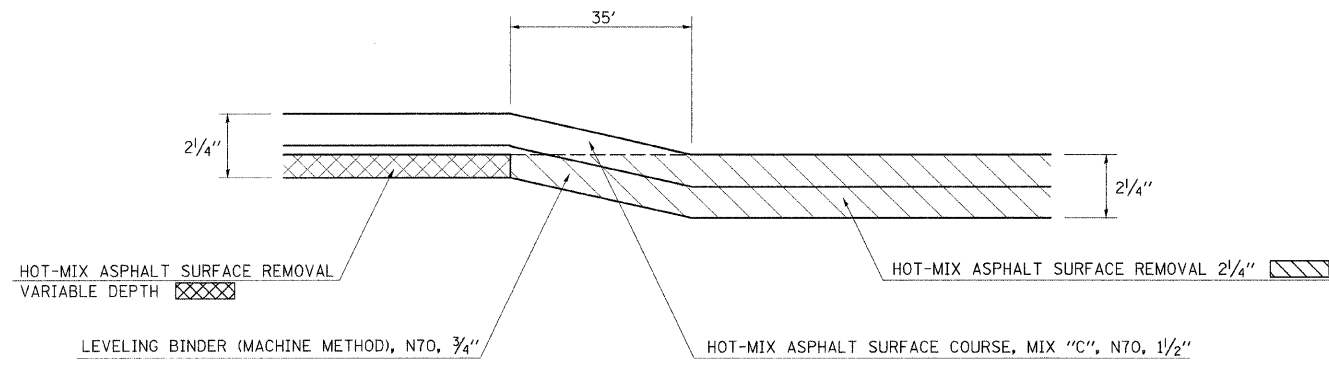
SCALE: NA SHEET NO. 5 OF 5 SHEETS STA. TO STA.

TYPICAL CROSS SECTIONS

• COLES AND CUMBERLAND COUNTIES

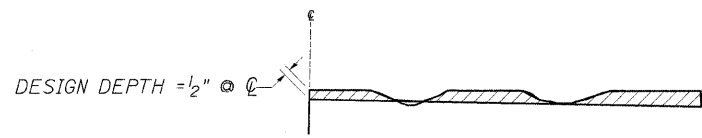
F.A.P. RTE.	SECTION	COUNTY	TOTAL SHEETS	SHEET NO.
116	(111,112,113-1)RS-6	•	20	8
CONTRACT NO. 74262			ILLINOIS FED. AID PROJECT	





**MILLING TRANSITION DETAIL**

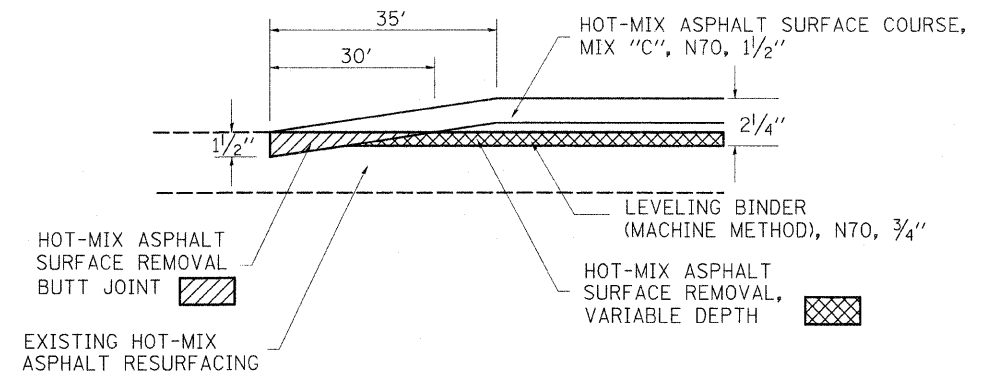
STATION 157+15 TO STATION 157+50 (COLES COUNTY)  
 STATION 172+50 TO STATION 172+85 (COLES COUNTY)  
 STATION 219+77 TO STATION 220+12 (COLES COUNTY)  
 STATION 432+85 TO STATION 433+20 (CUMBERLAND COUNTY)



**NOTES:**

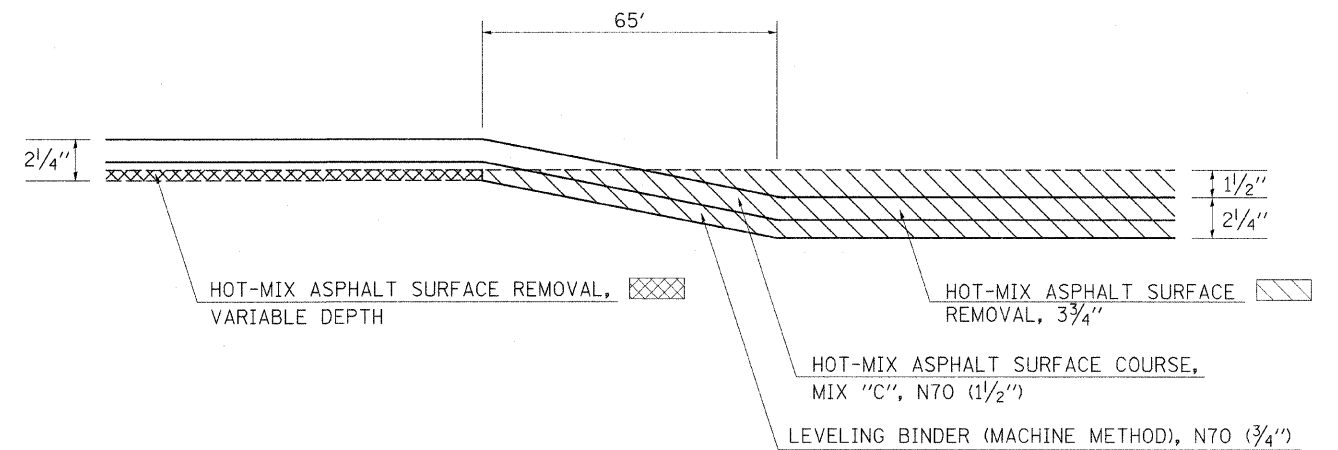
1. MILLING SHALL BE DONE TO ATTAIN A 3/16"/' SLOPE IN CROWN SECTIONS
2. EXISTING S.E. AND S.E. TRANSITIONS SHALL BE MAINTAINED UNLESS OTHERWISE SHOWN ON THE PLANS.
3. MILLING TO THE BOTTOM OF WHEEL RUTS SHALL NOT BE NECESSARY UNLESS REQUIRED TO OBTAIN SLOPE OR THE DESIGN DEPTH AT CENTERLINE.
4. THE AVERAGE DEPTH OF MILLING IS ESTIMATED TO BE 1/2" BUT MAY VARY IN ISOLATED LOCATIONS.

**HOT-MIX ASPHALT SURFACE REMOVAL (VARIABLE DEPTH) DETAIL**



**BUTT JOINT DETAIL**

STATION 151+00 TO STATION 151+35 (COLES COUNTY)  
 STATION 178+65 TO STATION 179+00 (COLES COUNTY)  
 STATION 251+65 TO STATION 252+00 (CUMBERLAND COUNTY)  
 STATION 257+41 TO STATION 257+76 (CUMBERLAND COUNTY)  
 STATION 266+15 TO STATION 266+50 (CUMBERLAND COUNTY)  
 STATION 270+10 TO STATION 270+45 (CUMBERLAND COUNTY)  
 STATION 374+02.84 TO STATION 374+37.84 (CUMBERLAND COUNTY)  
 STATION 376+35.15 TO STATION 376+70.15 (CUMBERLAND COUNTY)

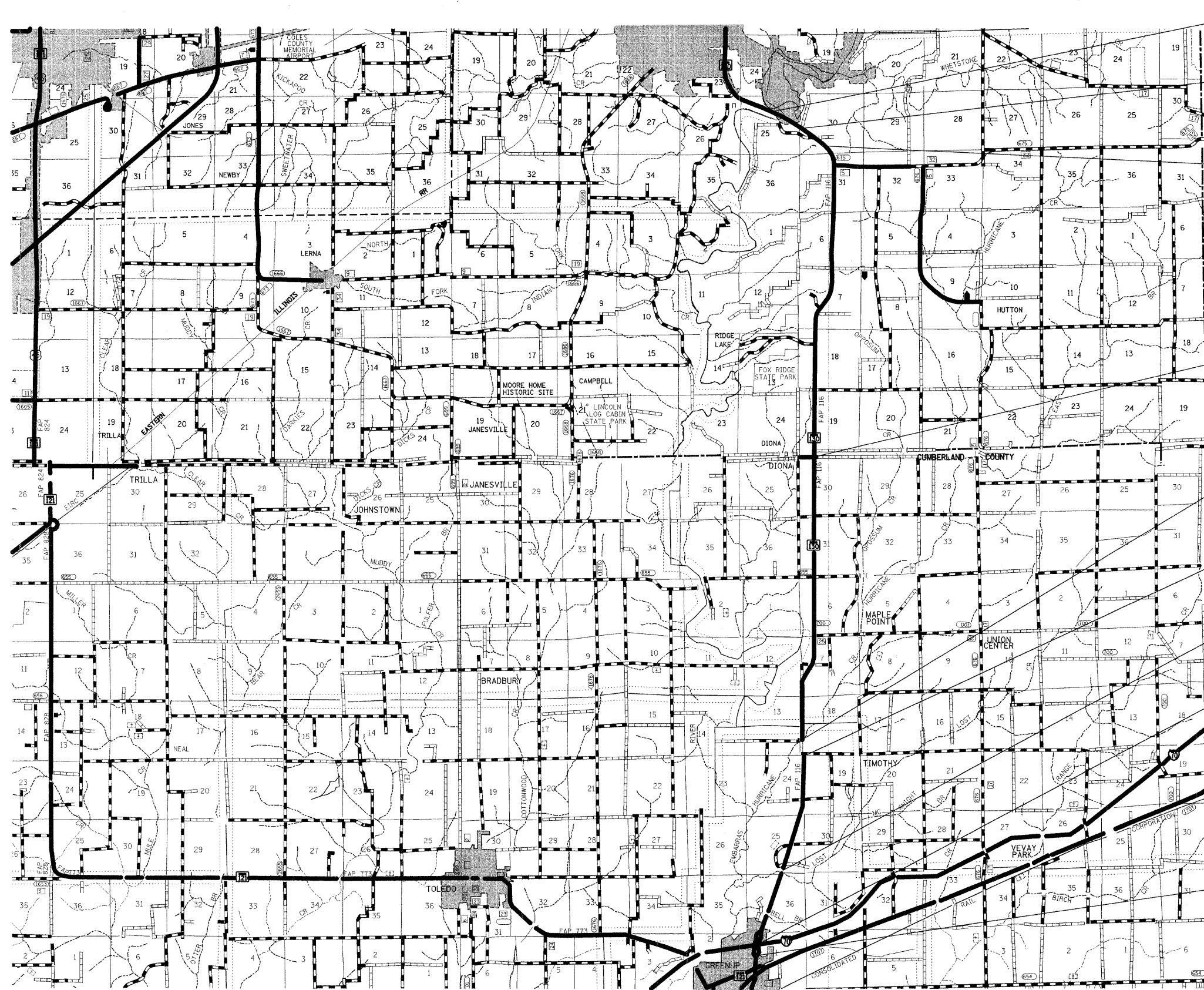


**MILLING TRANSITION DETIL**

STATION 407+85 TO STATION 408+50 (COLES COUNTY)  
 STATION 412+60 TO STATION 413+25 (COLES COUNTY)  
 STATION 440+85 TO STATION 441+50 (COLES COUNTY)  
 STATION 453+88 TO STATION 454+53 (COLES COUNTY)  
 STATION 467+85 TO STATION 468+50 (COLES COUNTY)  
 STATION 472+30 TO STATION 472+95 (COLES COUNTY)  
 STATION 220+65 TO STATION 221+30 (CUMBERLAND COUNTY)  
 STATION 237+50 TO STATION 238+15 (CUMBERLAND COUNTY)  
 STATION 274+35 TO STATION 275+00 (CUMBERLAND COUNTY)  
 STATION 290+00 TO STATION 290+65 (CUMBERLAND COUNTY)  
 STATION 292+10 TO STATION 292+75 (CUMBERLAND COUNTY)  
 STATION 299+50 TO STATION 300+15 (CUMBERLAND COUNTY)  
 STATION 344+55 TO STATION 345+20 (CUMBERLAND COUNTY)  
 STATION 352+50 TO STATION 353+15 (CUMBERLAND COUNTY)  
 STATION 392+95 TO STATION 393+60 (CUMBERLAND COUNTY)  
 STATION 417+80 TO STATION 418+45 (CUMBERLAND COUNTY)  
 STATION 420+35 TO STATION 421+00 (CUMBERLAND COUNTY)  
 STATION 427+85 TO STATION 428+50 (CUMBERLAND COUNTY)

FILE NAME =	USER NAME = swartzrk	DESIGNED -	REVISED -	<b>STATE OF ILLINOIS DEPARTMENT OF TRANSPORTATION</b>	<b>CONSTRUCTION DETAILS</b>	F.A.P. RTE.	SECTION	COUNTY	TOTAL SHEETS	SHEET NO.	
c:\pwork\pwork\DOT\SMART.ZRW\d0119059\d7	4262-sht-details.dgn	DRAWN -	REVISED -			116	(111,112,113-1)RS-6		20	9	
	PLT SCALE = 20,0000 ' / IN.	CHECKED -	REVISED -			CONTRACT NO. 74262					
	PLT DATE = 4/18/2009	DATE -	REVISED -			FED. ROAD DIST. NO. [ILLINOIS] FED. AID PROJECT					
					SCALE: NA	SHEET NO. 1 OF 1 SHEETS		STA.	TO STA.		

• COLES AND CUMBERLAND COUNTIES



SECTION (111,112,113)-DRS-6  
BEGINS STA. 151+00

PAVING OMISSION:  
STA. 179+00 TO STA. 182+99.2

STATION EQUATION:  
STA. 220+65 (BK) =  
STA. 219+77 (AH)

STATION EQUATION:  
STA. 504+86 (BK) =  
STA. 0+00 (AH)

PAVING OMISSION:  
STA. 252+00 TO STA. 257+00

PAVING OMISSION:  
STA. 266+50 TO STA. 270+10

PAVING OMISSION:  
STA. 374+72.84 TO STA. 376+35.15

PAVING OMISSION:  
STA. 449+15 TO STA. 451+52

SECTION (111,112,113)-DRS-6  
ENDS STA. 459+50



FILE NAME = c:\pwwork\p\wido\1\SMART2RW\10119058\107  
USER NAME = swartzw  
4262-shr-cover.dgn  
PLOT SCALE = 50,0000 ' / IN.  
PLOT DATE = 4/18/2009

DESIGNED -  
DRAWN -  
CHECKED -  
DATE -  
REVISED -  
REVISED -  
REVISED -  
REVISED -

**STATE OF ILLINOIS  
DEPARTMENT OF TRANSPORTATION**

**LOCATION MAP  
COLES & CUMBERLAND COUNTIES**  
SCALE: NA SHEET NO. 1 OF 1 SHEETS STA. TO STA.

• COLES & CUMBERLAND COUNTIES				
F.A.P. RTE.	SECTION	COUNTY	TOTAL SHEETS	SHEET NO.
116	(111,112,113)-DRS-6		20	10
			CONTRACT NO. 74262	
ILLINOIS FED. AID PROJECT				

PAVEMENT MARKING SCHEDULE

STATION TO STATION	LENGTH FOOT	PAINT PAVEMENT MARKING - LINE 4" WHITE FOOT	PAINT PAVEMENT MARKING - LINE 4" YELLOW FOOT	THERMOPLASTIC PAVEMENT MARKING - LINE 4" WHITE FOOT	THERMOPLASTIC PAVEMENT MARKING - LINE 4" YELLOW FOOT	THERMOPLASTIC PAVEMENT MARKING - LINE 6" FOOT	THERMOPLASTIC PAVEMENT MARKING - LINE 12" FOOT	THERMOPLASTIC PAVEMENT MARKING - LETTERS & SYMBOLS SQ FT	TEMPORARY PAVEMENT MARKING - LINE 4" FOOT	TEMPORARY PAVEMENT MARKING - LINE 6" FOOT	TEMPORARY PAVEMENT MARKING - LINE 12" FOOT	TEMPORARY PAVEMENT MARKING - LETTERS & SYMBOLS SQ FT	SHORT-TERM PAVEMENT MARKING FOOT	WORK ZONE PAVEMENT MARKING REMOVAL SQ FT	RAISED REFLECTIVE PAVEMENT MARKER EACH
151+00.00 TO 164+38.00	1338.0	2676.0	1672.5	0.0	0.0	0.0	0.0	0.0	4348.5	0.0	0.0	0.0	528.0	44.0	17.0
164+38.00 TO 179+00.00	1462.0	2722.0	365.5	0.0	0.0	0.0	0.0	0.0	3087.5	0.0	0.0	0.0	592.0	49.3	18.0
179+00.00 TO 182+99.20	399.2	798.4	0.0	0.0	0.0	0.0	0.0	0.0	798.4	0.0	0.0	0.0	0.0	0.0	0.0
182+99.20 TO 201+02.00	1802.8	3510.6	450.7	0.0	0.0	0.0	0.0	0.0	3961.3	0.0	0.0	0.0	720.0	60.0	23.0
201+02.00 TO 203+18.00	216.0	432.0	270.0	0.0	0.0	0.0	0.0	0.0	702.0	0.0	0.0	0.0	80.0	6.7	3.0
203+18.00 TO 220+65.00	1747.0	3394.0	1747.0	0.0	0.0	0.0	0.0	0.0	5141.0	0.0	0.0	0.0	704.0	58.7	22.0
220+65.00 BK= 219+77.00 AH	0.0	0.0	0.0	0.0	0.0	0.0	0.0	0.0	0.0	0.0	0.0	0.0	0.0	0.0	0.0
219+77.00 TO 237+00.00	1723.0	3384.0	2153.8	0.0	0.0	0.0	0.0	0.0	5537.8	0.0	0.0	0.0	688.0	57.3	22.0
237+00.00 TO 239+82.00	282.0	564.0	564.0	0.0	0.0	0.0	0.0	0.0	1128.0	0.0	0.0	0.0	112.0	9.3	8.0
239+82.00 TO 245+87.00	605.0	0.0	0.0	1210.0	2420.0	605.0	167.0	31.2	3630.0	605.0	167.0	31.2	480.0	40.0	30.0
245+87.00 TO 245+97.00	10.0	0.0	0.0	20.0	20.0	0.0	0.0	0.0	40.0	0.0	0.0	0.0	0.0	0.0	0.0
245+97.00 TO 249+60.00	363.0	0.0	0.0	656.0	726.0	0.0	0.0	0.0	1382.0	0.0	0.0	0.0	144.0	12.0	27.0
249+60.00 TO 250+45.00	85.0	0.0	0.0	85.0	0.0	0.0	0.0	0.0	85.0	0.0	0.0	0.0	32.0	2.7	0.0
250+45.00 TO 253+84.00	339.0	0.0	0.0	678.0	1356.0	0.0	89.0	0.0	2034.0	0.0	89.0	0.0	128.0	10.7	19.0
253+84.00 TO 257+75.00	391.0	734.0	782.0	0.0	0.0	0.0	0.0	0.0	1516.0	0.0	0.0	0.0	160.0	13.3	9.0
257+75.00 TO 350+30.00	9255.0	18367.0	2313.8	0.0	0.0	0.0	0.0	0.0	20680.8	0.0	0.0	0.0	3696.0	308.0	116.0
350+30.00 TO 360+00.00	970.0	1940.0	1212.5	0.0	0.0	0.0	0.0	0.0	3152.5	0.0	0.0	0.0	384.0	32.0	12.0
360+00.00 TO 366+06.00	606.0	1212.0	1212.0	0.0	0.0	0.0	0.0	0.0	2424.0	0.0	0.0	0.0	240.0	20.0	8.0
366+06.00 TO 371+90.00	584.0	1168.0	730.0	0.0	0.0	0.0	0.0	0.0	1898.0	0.0	0.0	0.0	240.0	20.0	7.0
371+90.00 TO 375+11.00	321.0	589.0	642.0	0.0	0.0	0.0	0.0	0.0	1231.0	0.0	0.0	0.0	128.0	10.7	4.0
375+11.00 TO 381+92.00	681.0	1362.0	851.3	0.0	0.0	0.0	0.0	0.0	2213.3	0.0	0.0	0.0	272.0	22.7	9.0
381+92.00 TO 385+07.00	315.0	587.0	1174.0	0.0	0.0	0.0	0.0	0.0	1761.0	0.0	0.0	0.0	128.0	10.7	4.0
385+07.00 TO 397+85.00	1278.0	2556.0	2875.5	0.0	0.0	0.0	0.0	0.0	5431.5	0.0	0.0	0.0	512.0	42.7	16.0
397+85.00 TO 405+60.00	775.0	1550.0	968.8	0.0	0.0	0.0	0.0	0.0	2518.8	0.0	0.0	0.0	304.0	25.3	10.0
405+60.00 TO 408+30.00	270.0	540.0	67.5	0.0	0.0	0.0	0.0	0.0	607.5	0.0	0.0	0.0	112.0	9.3	3.0
408+30.00 TO 415+80.00	750.0	1500.0	937.5	0.0	0.0	0.0	0.0	0.0	2437.5	0.0	0.0	0.0	304.0	25.3	9.0
415+80.00 TO 437+70.00	2190.0	4380.0	547.5	0.0	0.0	0.0	0.0	0.0	4927.5	0.0	0.0	0.0	880.0	73.3	27.0
437+70.00 TO 448+47.00	1077.0	2154.0	1346.3	0.0	0.0	0.0	0.0	0.0	3500.3	0.0	0.0	0.0	432.0	36.0	13.0
448+47.00 TO 451+10.00	263.0	435.0	526.0	0.0	0.0	0.0	0.0	0.0	961.0	0.0	0.0	0.0	112.0	9.3	3.0
451+10.00 TO 458+00.00	690.0	1380.0	862.5	0.0	0.0	0.0	0.0	0.0	2242.5	0.0	0.0	0.0	272.0	22.7	9.0
458+00.00 TO 504+86.00	4686.0	9310.0	1171.5	0.0	0.0	0.0	0.0	0.0	10481.5	0.0	0.0	0.0	1872.0	156.0	59.0
504+86.00 BK= 0+00.00 AH	0.0	0.0	0.0	0.0	0.0	0.0	0.0	0.0	0.0	0.0	0.0	0.0	0.0	0.0	0.0
0+00.00 TO 169+90.00	16990.0	33591.0	4247.5	0.0	0.0	0.0	0.0	0.0	37838.5	0.0	0.0	0.0	6800.0	566.7	212.0
169+90.00 TO 181+00.00	1110.0	2220.0	1387.5	0.0	0.0	0.0	0.0	0.0	3607.5	0.0	0.0	0.0	448.0	37.3	14.0
181+00.00 TO 206+75.00	2575.0	5000.0	5150.0	0.0	0.0	0.0	0.0	0.0	10150.0	0.0	0.0	0.0	1024.0	85.3	32.0
206+75.00 TO 214+00.00	725.0	1450.0	906.3	0.0	0.0	0.0	0.0	0.0	2356.3	0.0	0.0	0.0	288.0	24.0	9.0
214+00.00 TO 217+75.00	375.0	750.0	93.8	0.0	0.0	0.0	0.0	0.0	843.8	0.0	0.0	0.0	144.0	12.0	5.0
217+75.00 TO 228+00.00	1025.0	2050.0	1281.3	0.0	0.0	0.0	0.0	0.0	3331.3	0.0	0.0	0.0	416.0	34.7	13.0

• COLES AND CUMBERLAND COUNTIES

FILE NAME =	USER NAME = swartzw	DESIGNED -	REVISED -	<b>STATE OF ILLINOIS DEPARTMENT OF TRANSPORTATION</b>	<b>SCHEDULE OF QUANTITIES</b>				F.A.P. RTE.	SECTION	COUNTY	TOTAL SHEETS	SHEET NO.
c:\pwork\pwork\swartzw\d0119058\d774252-sht-sch.dgn		DRAWN -	REVISED -		116	(111,112,113)-JRS-6	*	20	11				
PLOT SCALE = 20.0000" / IN.		CHECKED -	REVISED -		SCALE: NA SHEET NO. 1 OF 5 SHEETS STA. TO STA.				CONTRACT NO. 74262				
PLOT DATE = 4/10/2009		DATE -	REVISED -						ILLINOIS FED. AID PROJECT				

PAVEMENT MARKING SCHEDULE (Cont'd)		LENGTH	PAINT PAVEMENT MARKING - LINE 4" WHITE	PAINT PAVEMENT MARKING - LINE 4" YELLOW	THERMOPLASTIC PAVEMENT MARKING - LINE 4" WHITE	THERMOPLASTIC PAVEMENT MARKING - LINE 4" YELLOW	THERMOPLASTIC PAVEMENT MARKING - LINE 6"	THERMOPLASTIC PAVEMENT MARKING - LINE 12"	THERMOPLASTIC PAVEMENT MARKING - LETTERS & SYMBOLS	TEMPORARY PAVEMENT MARKING - LINE 4"	TEMPORARY PAVEMENT MARKING - LINE 6"	TEMPORARY PAVEMENT MARKING - LINE 12"	TEMPORARY PAVEMENT MARKING - LETTERS & SYMBOLS	SHORT-TERM PAVEMENT MARKING	WORK ZONE PAVEMENT MARKING REMOVAL	RAISED REFLECTIVE PAVEMENT MARKER
STATION TO STATION		FOOT	FOOT	FOOT	FOOT	FOOT	FOOT	FOOT	SQ FT	FOOT	FOOT	FOOT	SQ FT	FOOT	SQ FT	EACH
228+00.00 TO 231+00.00		300.0	600.0	820.0	0.0	0.0	0.0	0.0	0.0	1200.0	0.0	0.0	0.0	128.0	10.7	4.0
231+00.00 TO 239+80.00		880.0	1760.0	1047.5	0.0	0.0	0.0	0.0	0.0	2860.0	0.0	0.0	0.0	352.0	29.3	11.0
239+80.00 TO 246+50.00		670.0	1340.0	100.0	0.0	0.0	0.0	0.0	0.0	1507.5	0.0	0.0	0.0	272.0	22.7	8.0
246+50.00 TO 250+50.00		400.0	800.0	400.0	0.0	0.0	0.0	0.0	0.0	1300.0	0.0	0.0	0.0	160.0	13.3	5.0
250+50.00 TO 252+00.00		150.0	300.0	300.0	0.0	0.0	0.0	0.0	0.0	600.0	0.0	0.0	0.0	64.0	5.3	2.0
252+00.00 TO 257+41.00		541.0	1082.0	227.3	0.0	0.0	0.0	0.0	0.0	1082.0	0.0	0.0	0.0	0.0	0.0	0.0
257+41.00 TO 266+50.00		909.0	1818.0	909.0	0.0	0.0	0.0	0.0	0.0	2954.3	0.0	0.0	0.0	368.0	30.7	11.0
266+50.00 TO 270+10.00		360.0	654.0	277.5	0.0	0.0	0.0	0.0	0.0	654.0	0.0	0.0	0.0	0.0	0.0	0.0
270+10.00 TO 281+20.00		1110.0	2220.0	1110.0	0.0	0.0	0.0	0.0	0.0	3607.5	0.0	0.0	0.0	448.0	37.3	14.0
281+20.00 TO 285+65.00		445.0	890.0	1093.8	0.0	0.0	0.0	0.0	0.0	1780.0	0.0	0.0	0.0	176.0	14.7	6.0
285+65.00 TO 293+80.00		815.0	1630.0	1112.5	0.0	0.0	0.0	0.0	0.0	2648.8	0.0	0.0	0.0	320.0	26.7	10.0
293+80.00 TO 305+70.00		1190.0	2380.0	135.0	0.0	0.0	0.0	0.0	0.0	2677.5	0.0	0.0	0.0	480.0	40.0	15.0
305+70.00 TO 311+10.00		540.0	987.0	540.0	0.0	0.0	0.0	0.0	0.0	1662.0	0.0	0.0	0.0	224.0	18.7	7.0
311+10.00 TO 316+15.00		505.0	1010.0	1215.8	0.0	0.0	0.0	0.0	0.0	2020.0	0.0	0.0	0.0	208.0	17.3	6.0
316+15.00 TO 324+38.00		823.0	1646.0	1123.5	0.0	0.0	0.0	0.0	0.0	2674.8	0.0	0.0	0.0	336.0	28.0	10.0
324+38.00 TO 336+40.00		1202.0	2404.0	140.0	0.0	0.0	0.0	0.0	0.0	2704.5	0.0	0.0	0.0	480.0	40.0	15.0
336+40.00 TO 342+00.00		560.0	1120.0	688.3	0.0	0.0	0.0	0.0	0.0	1820.0	0.0	0.0	0.0	224.0	18.7	7.0
342+00.00 TO 347+13.00		513.0	1026.0	142.8	0.0	0.0	0.0	0.0	0.0	1154.3	0.0	0.0	0.0	208.0	17.3	6.0
347+13.00 TO 352+84.00		571.0	1056.0	1118.3	0.0	0.0	0.0	0.0	0.0	1769.8	0.0	0.0	0.0	224.0	18.7	7.0
352+84.00 TO 374+73.00		2189.0	4282.0	0.0	0.0	0.0	0.0	0.0	0.0	4829.3	0.0	0.0	0.0	880.0	73.3	27.0
374+73.00 TO 376+35.00		162.0	324.0	261.3	0.0	0.0	0.0	0.0	0.0	324.0	0.0	0.0	0.0	0.0	0.0	0.0
376+35.00 TO 386+80.00		1045.0	2090.0	375.0	0.0	0.0	0.0	0.0	0.0	2351.3	0.0	0.0	0.0	416.0	34.7	13.0
386+80.00 TO 401+80.00		1500.0	3000.0	1500.0	0.0	0.0	0.0	0.0	0.0	4875.0	0.0	0.0	0.0	608.0	50.7	19.0
401+80.00 TO 406+80.00		500.0	1000.0	1517.5	0.0	0.0	0.0	0.0	0.0	2000.0	0.0	0.0	0.0	208.0	17.3	6.0
406+80.00 TO 427+50.00		2070.0	4140.0	2070.0	0.0	0.0	0.0	0.0	0.0	6727.5	0.0	0.0	0.0	832.0	69.3	26.0
427+50.00 TO 437+06.00		956.0	1912.0	1912.0	0.0	0.0	0.0	0.0	0.0	3824.0	0.0	0.0	0.0	384.0	32.0	12.0
437+06.00 TO 438+63.00		157.0	0.0	0.0	257.0	314.0	0.0	0.0	0.0	571.0	0.0	0.0	0.0	0.0	0.0	0.0
438+63.00 TO 443+35.00		472.0	0.0	0.0	944.0	944.0	0.0	0.0	0.0	1888.0	0.0	0.0	0.0	0.0	0.0	0.0
443+35.00 TO 444+33.00		98.0	0.0	0.0	196.0	0.0	0.0	0.0	0.0	196.0	0.0	0.0	0.0	0.0	0.0	0.0
444+33.00 TO 446+51.00		218.0	0.0	0.0	436.0	436.0	218.0	0.0	31.2	872.0	218.0	0.0	31.2	80.0	6.7	5.0
446+51.00 TO 449+15.00		264.0	0.0	0.0	528.0	528.0	0.0	0.0	0.0	1056.0	0.0	0.0	0.0	0.0	0.0	0.0
449+15.00 TO 451+52.00		237.0	0.0	0.0	0.0	0.0	0.0	0.0	0.0	0.0	0.0	0.0	0.0	0.0	0.0	0.0
451+52.00 TO 454+06.00		254.0	0.0	0.0	508.0	508.0	0.0	0.0	0.0	1016.0	0.0	0.0	0.0	0.0	0.0	0.0
454+06.00 TO 456+40.00		234.0	0.0	0.0	468.0	468.0	234.0	0.0	31.2	936.0	234.0	0.0	31.2	96.0	8.0	6.0
456+40.00 TO 457+35.00		95.0	0.0	0.0	190.0	0.0	0.0	0.0	0.0	190.0	0.0	0.0	0.0	0.0	0.0	0.0
457+35.00 TO 459+50.00		215.0	0.0	0.0	430.0	430.0	0.0	0.0	0.0	860.0	0.0	0.0	0.0	0.0	0.0	0.0
TOTALS			153777.0	58647.0	6606.0	8150.0	1057.0	256.0	94.0	227180.0	1057.0	256.0	94.0	31552.0	2629.0	1050.0

RESURFACING SCHEDULE			LENGTH	AVERAGE PAVEMENT WIDTH	AREA	HOT-MIX ASPHALT SURFACE REMOVAL, VARIABLE DEPTH	HOT-MIX ASPHALT SURFACE REMOVAL, 1 1/2"	HOT-MIX ASPHALT SURFACE REMOVAL, 2 1/4"	HOT-MIX ASPHALT SURFACE REMOVAL, 3 3/4"	BITUMINOUS MATERIALS (PRIME COAT)	AGGREGATE (PRIME COAT)	HOT-MIX ASPHALT SURFACE COURSE, MIX "C", N70	POLYMERIZED HOT-MIX ASPHALT SURFACE COURSE, MIX "C", N90	LEVELING BINDER (MACHINE METHOD), N70	LEVELING BINDER (MACHINE METHOD), N90	HOT-MIX ASPHALT SHOULDERS	AGGREGATE SHOULDERS, TYPE B	HOT-MIX ASPHALT SURFACE REMOVAL - BUTT JOINT	TEMPORARY RAMP
151+00.00	TO 151+35.00	35.0	26.0	910.0	25.6	0.0	0.0	0.0	17.9	0.4	8.5	0.0	2.1	0.0	9.8	2.3	153.3	25.6	
151+35.00	TO 154+00.00	265.0	26.0	6890.0	1354.4	0.0	0.0	0.0	135.4	2.7	64.3	0.0	32.2	0.0	74.2	17.6	0.0	0.0	
154+00.00	TO 157+15.00	315.0	26.0	8190.0	1435.0	0.0	0.0	0.0	143.5	2.9	76.4	0.0	38.2	0.0	66.2	20.9	0.0	0.0	
157+15.00	TO 157+50.00	35.0	26.0	910.0	0.0	0.0	140.0	0.0	14.0	0.3	8.5	0.0	4.2	0.0	4.9	2.3	0.0	0.0	
157+50.00	TO 172+50.00	1500.0	26.0	39000.0	0.0	1666.7	6000.0	0.0	600.0	12.0	364.0	0.0	182.0	0.0	140.0	0.0	0.0	9.8	
172+50.00	TO 172+85.00	35.0	26.0	910.0	0.0	0.0	140.0	0.0	14.0	0.3	8.5	0.0	4.2	0.0	4.9	1.6	0.0	0.0	
172+85.00	TO 178+65.00	580.0	26.0	15080.0	2320.0	0.0	0.0	0.0	232.0	4.6	140.7	0.0	70.4	0.0	81.2	19.9	0.0	0.0	
178+65.00	TO 179+00.00	35.0	26.0	910.0	20.0	0.0	0.0	0.0	14.0	0.3	8.5	0.0	4.2	0.0	4.9	1.6	120.0	20.0	
179+00.00	TO 182+99.20	399.2	0.0	0.0	0.0	0.0	0.0	0.0	0.0	0.0	0.0	0.0	0.0	0.0	0.0	0.0	0.0	0.0	
182+99.20	TO 203+18.00	2018.8	26.0	52488.8	0.0	2243.1	8075.2	0.0	807.5	16.2	489.9	0.0	244.9	0.0	188.4	0.0	0.0	62.0	
203+18.00	TO 220+65.00	1747.0	26.0	45422.0	0.0	1941.1	6988.0	0.0	698.8	14.0	423.9	0.0	212.0	0.0	163.1	0.0	0.0	47.1	
220+65.00	BK= 219+77.00 AH	0.0	0.0	0.0	0.0	0.0	0.0	0.0	0.0	0.0	0.0	0.0	0.0	0.0	0.0	0.0	0.0	0.0	
219+77.00	TO 220+12.00	35.0	26.0	910.0	0.0	0.0	101.1	0.0	10.1	0.2	8.5	0.0	4.2	0.0	0.0	2.3	0.0	0.0	
220+12.00	TO 239+82.00	1970.0	26.0	51220.0	5691.1	0.0	0.0	0.0	569.1	11.4	478.1	0.0	239.0	0.0	0.0	121.5	0.0	0.0	
239+82.00	TO 244+25.00	443.0	36.0	15948.0	1772.0	0.0	0.0	0.0	177.2	3.5	148.8	0.0	74.4	0.0	0.0	29.4	0.0	0.0	
244+25.00	TO 250+45.00	620.0	42.0	26040.0	2893.3	0.0	0.0	0.0	289.3	5.8	243.0	0.0	121.5	0.0	0.0	33.0	0.0	0.0	
250+45.00	TO 253+84.00	339.0	36.0	12204.0	1356.0	0.0	0.0	0.0	135.6	2.7	113.9	0.0	57.0	0.0	0.0	22.5	0.0	0.0	
253+84.00	TO 357+22.00	10338.0	26.0	268788.0	29865.3	0.0	0.0	0.0	2986.5	59.7	2508.7	0.0	1254.3	0.0	0.0	666.0	0.0	0.0	
357+22.00	TO 368+67.00	1145.0	26.0	29770.0	3562.2	0.0	0.0	0.0	356.2	7.1	277.9	0.0	138.9	0.0	32.1	75.0	0.0	0.0	
368+67.00	TO 379+00.00	1033.0	26.0	26858.0	2984.2	0.0	0.0	0.0	298.4	6.0	250.7	0.0	125.3	0.0	0.0	65.8	0.0	0.0	
379+00.00	TO 388+52.00	952.0	26.0	24752.0	2961.8	0.0	0.0	0.0	296.2	5.9	231.0	0.0	115.5	0.0	26.7	59.5	0.0	0.0	
388+52.00	TO 407+85.00	1933.0	26.0	50258.0	5584.2	0.0	0.0	0.0	558.4	11.2	469.1	0.0	234.5	0.0	0.0	120.5	0.0	0.0	
407+85.00	TO 408+50.00	65.0	26.0	1690.0	0.0	0.0	0.0	187.8	18.8	0.4	15.8	0.0	7.9	0.0	0.0	4.3	0.0	0.0	
408+50.00	TO 412+60.00	410.0	26.0	10660.0	0.0	0.0	0.0	1184.4	118.4	2.4	99.5	0.0	49.7	0.0	0.0	0.0	0.0	29.6	
412+60.00	TO 413+25.00	65.0	26.0	1690.0	0.0	0.0	0.0	187.8	18.8	0.4	15.8	0.0	7.9	0.0	0.0	4.3	0.0	0.0	
413+25.00	TO 439+30.00	2605.0	26.0	67730.0	7525.6	0.0	0.0	0.0	752.6	15.1	632.1	0.0	316.1	0.0	0.0	169.4	0.0	0.0	
439+30.00	TO 440+85.00	155.0	26.0	4030.0	585.6	0.0	0.0	0.0	58.6	1.2	37.6	0.0	18.8	0.0	17.4	9.3	0.0	0.0	
440+85.00	TO 441+50.00	65.0	26.0	1690.0	0.0	0.0	0.0	245.6	24.6	0.5	15.8	0.0	7.9	0.0	7.3	4.3	0.0	0.0	
441+50.00	TO 442+56.00	106.0	26.0	2756.0	0.0	0.0	0.0	353.3	35.3	0.7	25.7	0.0	12.9	0.0	5.9	0.0	0.0	0.0	
442+56.00	TO 445+70.00	314.0	26.0	8164.0	0.0	0.0	0.0	907.1	90.7	1.8	76.2	0.0	38.1	0.0	0.0	0.0	0.0	0.0	
445+70.00	TO 453+88.00	818.0	26.0	21268.0	0.0	0.0	0.0	2363.1	236.3	4.7	198.5	0.0	99.3	0.0	0.0	0.0	0.0	42.9	
453+88.00	TO 454+53.00	65.0	26.0	1690.0	0.0	0.0	0.0	187.8	18.8	0.4	15.8	0.0	7.9	0.0	0.0	4.3	0.0	0.0	
454+53.00	TO 467+85.00	1332.0	26.0	34632.0	3848.0	0.0	0.0	0.0	384.8	7.7	323.2	0.0	161.6	0.0	0.0	88.5	0.0	0.0	
467+85.00	TO 468+50.00	65.0	26.0	1690.0	0.0	0.0	0.0	187.8	18.8	0.4	15.8	0.0	7.9	0.0	0.0	4.3	0.0	0.0	
468+50.00	TO 472+30.00	380.0	26.0	9880.0	0.0	0.0	0.0	1097.8	109.8	2.2	92.2	0.0	46.1	0.0	0.0	0.0	0.0	0.0	
472+30.00	TO 472+95.00	65.0	26.0	1690.0	0.0	0.0	0.0	187.8	18.8	0.4	15.8	0.0	7.9	0.0	0.0	4.3	0.0	0.0	
472+95.00	TO 504+86.00	3191.0	26.0	82966.0	9218.4	0.0	0.0	0.0	921.8	18.4	774.3	0.0	387.2	0.0	0.0	208.9	0.0	0.0	

FILE NAME =  
 USER NAME = swartzrw  
 DRAWN -  
 CHECKED -  
 DATE -  
 PLOT SCALE = 20.0000" / IN.  
 PLOT DATE = 4/10/2009

DESIGNED -  
 REVISIONS -  
 REVISIONS -  
 REVISIONS -  
 REVISIONS -

STATE OF ILLINOIS  
 DEPARTMENT OF TRANSPORTATION

SCHEDULE OF QUANTITIES  
 SCALE: NA SHEET NO. 3 OF 5 SHEETS STA. TO STA.

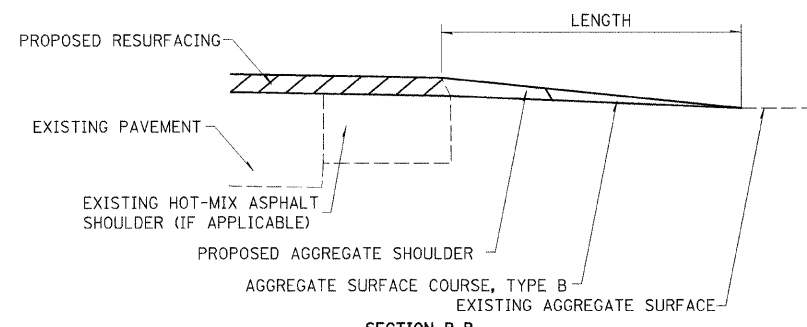
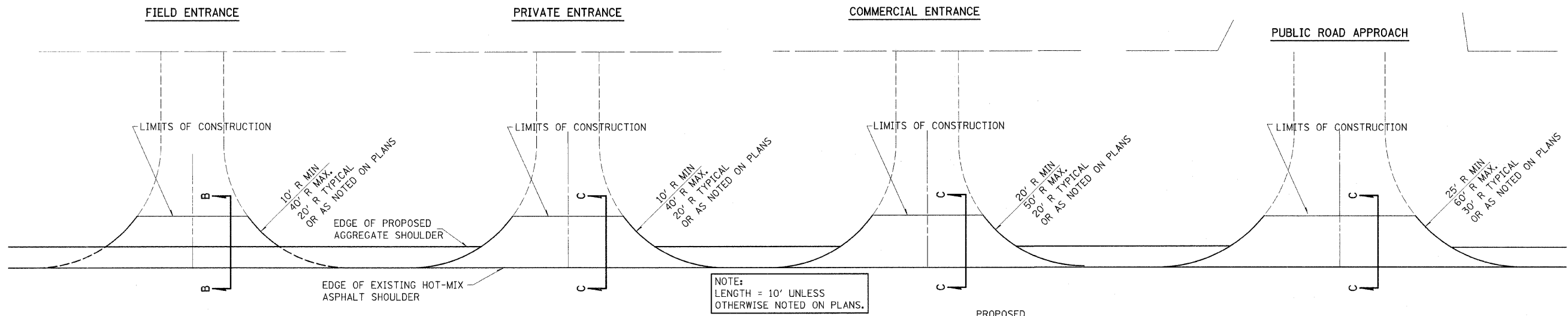
\* COLES AND CUMBERLAND COUNTIES  
 F.A.P. RTE. SECTION COUNTY TOTAL SHEETS SHEET NO.  
 116 (111,112,113-1)RS-6 20 13  
 CONTRACT NO. 74262  
 ILLINOIS FED. AID PROJECT

RESURFACING SCHEDULE (Cont'd)			LENGTH FOOT	AVERAGE PAVEMENT WIDTH FOOT	AREA SQ YD	HOT-MIX ASPHALT SURFACE REMOVAL, VARIABLE DEPTH SQ YD	HOT-MIX ASPHALT SURFACE REMOVAL, 1 1/2" SQ YD	HOT-MIX ASPHALT SURFACE REMOVAL, 2 1/4" SQ YD	HOT-MIX ASPHALT SURFACE REMOVAL, 3 3/4" SQ YD	BITUMINOUS MATERIALS (PRIME COAT) GALLON	AGGREGATE (PRIME COAT) TON	HOT-MIX ASPHALT SURFACE COURSE, MIX "C", N70 TON	POLYMERIZED HOT-MIX ASPHALT SURFACE COURSE, MIX "C", N90 TON	LEVELING BINDER (MACHINE METHOD), N70 TON	LEVELING BINDER (MACHINE METHOD), N90 TON	HOT-MIX ASPHALT SHOULDERS TON	AGGREGATE SHOULDERS, TYPE B TON	HOT-MIX ASPHALT SURFACE REMOVAL - BUTT JOINT SQ YD	TEMPORARY RAMP SQ YD
STATION	TO	STATION																	
504+86.00	BK=	0+00.00	0.0	0.0	0.0	0.0	0.0	0.0	0.0	0.0	0.0	0.0	0.0	0.0	0.0	0.0	0.0	0.0	0.0
0+00.00	TO	220+65.00	22065.0	26.0	573690.0	63743.3	0.0	0.0	0.0	6374.3	127.5	5354.4	0.0	2677.2	0.0	0.0	1434.2	0.0	0.0
220+65.00	TO	221+30.00	65.0	26.0	1690.0	0.0	0.0	0.0	187.8	18.8	0.4	15.8	0.0	7.9	0.0	0.0	4.3	0.0	0.0
221+30.00	TO	237+50.00	1620.0	26.0	42120.0	0.0	0.0	0.0	4680.0	468.0	9.4	393.1	0.0	196.6	0.0	0.0	0.0	0.0	20.9
237+50.00	TO	238+15.00	65.0	26.0	1690.0	0.0	0.0	0.0	187.8	18.8	0.4	15.8	0.0	7.9	0.0	0.0	4.3	0.0	0.0
238+15.00	TO	251+65.00	1350.0	26.0	35100.0	3900.0	0.0	0.0	0.0	390.0	7.8	327.6	0.0	163.8	0.0	0.0	87.4	0.0	0.0
251+65.00	TO	252+00.00	35.0	26.0	910.0	14.4	0.0	0.0	0.0	10.1	0.2	8.5	0.0	2.1	0.0	0.0	2.3	86.7	14.4
252+00.00	TO	257+41.00	541.0	0.0	0.0	0.0	0.0	0.0	0.0	0.0	0.0	0.0	0.0	0.0	0.0	0.0	0.0	0.0	0.0
257+41.00	TO	257+76.00	35.0	26.0	910.0	14.4	0.0	0.0	0.0	10.1	0.2	8.5	0.0	2.1	0.0	0.0	2.3	86.7	14.4
257+76.00	TO	266+15.00	839.0	26.0	21814.0	2423.8	0.0	0.0	0.0	242.4	4.8	203.6	0.0	101.8	0.0	0.0	55.7	0.0	0.0
266+15.00	TO	266+50.00	35.0	26.0	910.0	18.9	0.0	0.0	0.0	13.2	0.3	8.5	0.0	2.1	0.0	3.9	2.3	113.3	18.9
266+50.00	TO	270+10.00	360.0	0.0	0.0	0.0	0.0	0.0	0.0	0.0	0.0	0.0	0.0	0.0	0.0	0.0	0.0	0.0	0.0
270+10.00	TO	270+45.00	35.0	26.0	910.0	18.9	0.0	0.0	0.0	13.2	0.3	8.5	0.0	2.1	0.0	3.9	2.3	113.3	18.9
270+45.00	TO	270+86.00	41.0	26.0	1066.0	154.9	0.0	0.0	0.0	15.5	0.3	9.9	0.0	5.0	0.0	4.6	2.7	0.0	0.0
270+86.00	TO	274+35.00	349.0	26.0	9074.0	1008.2	0.0	0.0	0.0	100.8	2.0	84.7	0.0	42.3	0.0	0.0	23.2	0.0	0.0
274+35.00	TO	275+00.00	65.0	26.0	1690.0	0.0	0.0	0.0	187.8	18.8	0.4	15.8	0.0	7.9	0.0	0.0	4.3	0.0	0.0
275+00.00	TO	290+00.00	1500.0	26.0	39000.0	0.0	0.0	0.0	4333.3	433.3	8.7	364.0	0.0	182.0	0.0	0.0	0.0	0.0	14.7
290+00.00	TO	290+65.00	65.0	26.0	1690.0	0.0	0.0	0.0	187.8	18.8	0.4	15.8	0.0	7.9	0.0	0.0	4.3	0.0	0.0
290+65.00	TO	292+10.00	145.0	26.0	3770.0	418.9	0.0	0.0	0.0	41.9	0.8	35.2	0.0	17.6	0.0	0.0	8.4	0.0	0.0
292+10.00	TO	292+75.00	65.0	26.0	1690.0	0.0	0.0	0.0	187.8	18.8	0.4	15.8	0.0	7.9	0.0	0.0	4.3	0.0	0.0
292+75.00	TO	299+50.00	675.0	26.0	17550.0	0.0	0.0	0.0	1950.0	195.0	3.9	163.8	0.0	81.9	0.0	0.0	0.0	0.0	0.0
299+50.00	TO	300+15.00	65.0	26.0	1690.0	0.0	0.0	0.0	187.8	18.8	0.4	15.8	0.0	7.9	0.0	0.0	4.3	0.0	0.0
300+15.00	TO	344+55.00	4440.0	26.0	115440.0	12826.7	0.0	0.0	0.0	1282.7	25.7	1077.4	0.0	538.7	0.0	0.0	287.8	0.0	0.0
344+55.00	TO	345+20.00	65.0	26.0	1690.0	0.0	0.0	0.0	187.8	18.8	0.4	15.8	0.0	7.9	0.0	0.0	4.3	0.0	0.0
345+20.00	TO	352+50.00	730.0	26.0	18980.0	0.0	0.0	0.0	2108.9	210.9	4.2	177.1	0.0	88.6	0.0	0.0	0.0	0.0	19.1
352+50.00	TO	353+15.00	65.0	26.0	1690.0	0.0	0.0	0.0	187.8	18.8	0.4	15.8	0.0	7.9	0.0	0.0	4.3	0.0	0.0
353+15.00	TO	374+02.84	2087.8	26.0	54283.8	6031.5	0.0	0.0	0.0	603.2	12.1	506.6	0.0	253.3	0.0	0.0	134.3	0.0	0.0
374+02.84	TO	374+37.84	35.0	26.0	910.0	14.4	0.0	0.0	0.0	10.1	0.2	8.5	0.0	2.1	0.0	0.0	2.3	86.7	14.4
374+37.84	TO	376+35.15	197.3	0.0	0.0	0.0	0.0	0.0	0.0	0.0	0.0	0.0	0.0	0.0	0.0	0.0	0.0	0.0	0.0
376+35.15	TO	376+70.15	35.0	26.0	910.0	14.4	0.0	0.0	0.0	10.1	0.2	8.5	0.0	2.1	0.0	0.0	2.3	86.7	14.4
376+70.15	TO	392+95.00	1624.9	26.0	42246.1	4694.0	0.0	0.0	0.0	469.4	9.4	394.3	0.0	197.1	0.0	0.0	102.7	0.0	0.0
392+95.00	TO	393+60.00	65.0	26.0	1690.0	0.0	0.0	0.0	187.8	18.8	0.4	15.8	0.0	7.9	0.0	0.0	4.3	0.0	0.0
393+60.00	TO	417+80.00	2420.0	26.0	62920.0	0.0	0.0	0.0	6991.1	699.1	14.0	587.3	0.0	293.6	0.0	0.0	0.0	0.0	59.3
417+80.00	TO	418+45.00	65.0	26.0	1690.0	0.0	0.0	0.0	187.8	18.8	0.4	15.8	0.0	7.9	0.0	0.0	4.3	0.0	0.0
418+45.00	TO	420+35.00	190.0	26.0	4940.0	548.9	0.0	0.0	0.0	54.9	1.1	46.1	0.0	23.1	0.0	0.0	12.6	0.0	0.0
420+35.00	TO	421+00.00	65.0	26.0	1690.0	0.0	0.0	0.0	187.8	18.8	0.4	15.8	0.0	7.9	0.0	0.0	4.3	0.0	0.0
421+00.00	TO	427+85.00	685.0	26.0	17810.0	0.0	0.0	0.0	1978.9	197.9	4.0	166.2	0.0	83.1	0.0	0.0	0.0	0.0	7.8

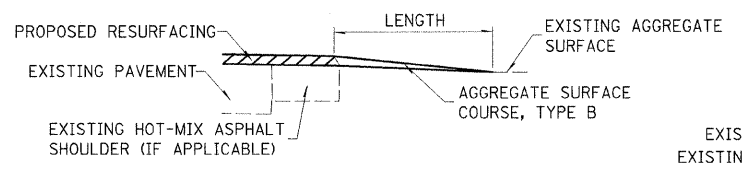
FILE NAME =	USER NAME = swrtzrw	DESIGNED -	REVISED -	<b>STATE OF ILLINOIS DEPARTMENT OF TRANSPORTATION</b>	<b>SCHEDULE OF QUANTITIES</b>				* COLES AND CUMBERLAND COUNTIES					
c:\pwork\pwork\swrtzrw\d0119058\d774	262-sht-sch.dgn	DRAWN -	REVISED -		F.A.P. RTE.	SECTION	COUNTY	TOTAL SHEETS	SHEET NO.	116	(111,112,113)-1RS-6		20	14
	PLOT SCALE = 20.0000' / IN.	CHECKED -	REVISED -		SCALE: NA	SHEET NO. 4	OF 5 SHEETS	STA.	TO STA.					
	PLOT DATE = 4/18/2009	DATE -	REVISED -						CONTRACT NO. 74262					

RESURFACING SCHEDULE (Cont' d)		LENGTH	AVERAGE PAVEMENT WIDTH	AREA	HOT-MIX ASPHALT SURFACE REMOVAL, VARIABLE DEPTH	HOT-MIX ASPHALT SURFACE REMOVAL, 1 1/2"	HOT-MIX ASPHALT SURFACE REMOVAL, 2 1/4"	HOT-MIX ASPHALT SURFACE REMOVAL, 3 3/4"	BITUMINOUS MATERIALS (PRIME COAT)	AGGREGATE (PRIME COAT)	HOT-MIX ASPHALT SURFACE COURSE, MIX "C", N70	POLYMERIZED HOT-MIX ASPHALT SURFACE COURSE, MIX "C", N90	LEVELING BINDER (MACHINE METHOD), N70	LEVELING BINDER (MACHINE METHOD), N90	HOT-MIX ASPHALT SHOULDERS	AGGREGATE SHOULDERS, TYPE B	HOT-MIX ASPHALT SURFACE REMOVAL - BUTT JOINT	TEMPORARY RAMP
427+85.00	TO 428+50.00	65.0	26.0	1690.0	0.0	0.0	0.0	187.8	18.8	0.4	15.8	0.0	7.9	0.0	0.0	3.3	0.0	0.0
428+50.00	TO 432+85.00	435.0	26.0	11310.0	1256.7	0.0	0.0	0.0	125.7	2.5	105.6	0.0	52.8	0.0	0.0	26.7	0.0	0.0
432+85.00	TO 433+20.00	35.0	26.0	910.0	0.0	0.0	101.1	0.0	10.1	0.2	8.5	0.0	4.2	0.0	0.0	-1.0	0.0	0.0
433+20.00	TO 437+06.00	386.0	27.5	10615.0	0.0	857.8	1179.4	0.0	203.7	4.1	0.0	99.1	0.0	49.5	72.1	0.0	0.0	17.3
437+06.00	TO 438+63.00	157.0	29.0	4553.0	0.0	348.9	505.9	0.0	85.5	1.7	0.0	42.5	0.0	21.2	29.3	0.0	0.0	34.4
438+63.00	TO 443+35.00	472.0	28.0	13216.0	0.0	1048.9	1468.4	0.0	251.7	5.0	0.0	123.3	0.0	61.7	88.1	0.0	0.0	0.0
443+35.00	TO 444+33.00	98.0	43.0	4214.0	0.0	217.8	468.2	0.0	68.6	1.4	0.0	39.3	0.0	19.7	18.3	0.0	0.0	0.0
444+33.00	TO 446+64.00	231.0	40.0	9240.0	0.0	513.3	1026.7	0.0	154.0	3.1	0.0	86.2	0.0	43.1	43.1	0.0	0.0	0.0
446+64.00	TO 449+15.00	251.0	34.0	8534.0	0.0	557.8	948.2	0.0	150.6	3.0	0.0	79.7	0.0	39.8	46.9	0.0	0.0	48.0
449+15.00	TO 451+52.00	237.0	0.0	0.0	0.0	0.0	0.0	0.0	0.0	0.0	0.0	0.0	0.0	0.0	0.0	0.0	0.0	0.0
451+52.00	TO 453+90.00	238.0	34.0	8092.0	0.0	528.9	899.1	0.0	142.8	2.9	0.0	75.5	0.0	37.8	44.4	0.0	0.0	48.0
453+90.00	TO 456+40.00	250.0	40.0	10000.0	0.0	555.6	1111.1	0.0	166.7	3.3	0.0	93.3	0.0	46.7	46.7	0.0	0.0	0.0
456+40.00	TO 457+35.00	95.0	47.0	4465.0	0.0	211.1	496.1	0.0	70.7	1.4	0.0	41.7	0.0	20.8	17.7	0.0	0.0	0.0
457+35.00	TO 459+50.00	215.0	29.0	6235.0	0.0	477.8	692.8	0.0	117.1	2.3	0.0	58.2	0.0	29.1	40.1	0.0	0.0	43.6
TOTALS		81424.0	2234.0	2106613.0	180105.0	11169.0	30341.0	31386.0	24800.0	497.0	18923.0	739.0	9446.0	369.0	1286.0	4003.0	847.0	646.0

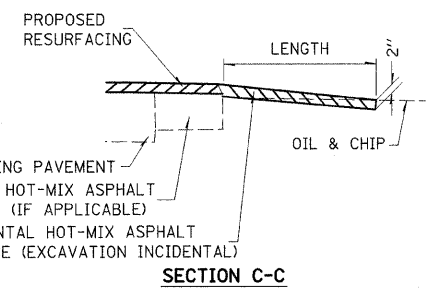
FILE NAME =	USER NAME = swartzw	DESIGNED -	REVISED -	<b>STATE OF ILLINOIS DEPARTMENT OF TRANSPORTATION</b>	<b>SCHEDULE OF QUANTITIES</b>				• COLES AND CUMBERLAND COUNTIES				
c:\pwork\pwork\swartzw\d0119058\d774262-sht-sch.dgn		DRAWN -	REVISED -		F.A.P. RTE.	SECTION	COUNTY	TOTAL SHEETS	SHEET NO.				
PLOT SCALE = 20.0000' / IN.		CHECKED -	REVISED -		116	(111,112,113-1)RS-6	*	20	15				
PLOT DATE = 4/10/2009		DATE -	REVISED -		SCALE: NA SHEET NO. 5 OF 5 SHEETS STA. TO STA.				CONTRACT NO. 74262 ILLINOIS FED. AID PROJECT				



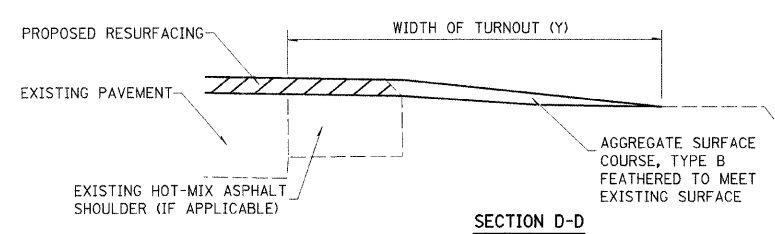
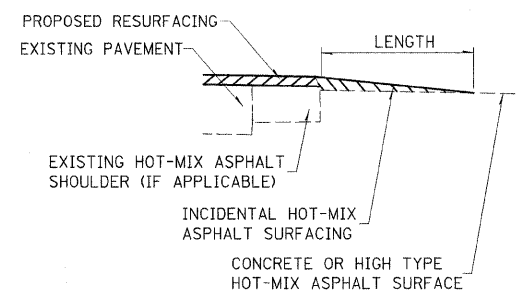
SECTION B-B



NOTE: IF THERE IS NO EXISTING HOT-MIX ASPHALT SHOULDER ENTRANCE TAPER LENGTH STARTS AT EDGE OF EXISTING PAVEMENT.



SECTION C-C



SECTION D-D

TYPICAL SECTION AT MAILBOX TURNOUT  
NOTE: SEE STANDARD 406201 FOR MAILBOX TURNOUT DETAILS

SIDE	STATION	TYPE	INCIDENTAL HOT-MIX ASPHALT SURFACING*		AGGREGATE SURFACE COURSE, TYPE B
			TON	TON	
LT	167+30	PE			
LT	175+38	PRA	16.7		
RT	175+59	PRA	9.5		
LT	182+79	CE	10.7		
LT	197+17	PRA			
RT	197+34	FE			
RT	215+11	PRA			
LT	216+33	PE			
LT	220+62	MBT			
LT	221+09	PRA	6.2		
RT	221+32	PE	2.6		
RT	224+43	PE	3.3		
LT	224+43	MBT		1.9	
RT	227+55	PE		1.7	
LT	227+73	FE		1.4	
RT	233+40	PE	2.9		
LT	234+76	MBT		1.9	
RT	234+88	PE	5.4		
RT	236+30	PE	5.1		
LT	236+30	MBT		1.9	
RT	241+28	PE	2.9		
LT	241+45	MBT	3.3		
RT	244+71	PE	3.2		
LT	244+71	MBT	3.3		
LT	246+78	PE	2.9		
RT	247+98	FE		1.4	
LT	247+98	PRA	14.9		
RT	255+16	PRA	4.4		
LT	260+75	PE	3.1		
LT	265+66	PE	3.2		
LT	266+60	PE	3.0		
RT	267+15	PE	2.6		
LT	267+61	PE	2.6		
LT	271+89	MBT	3.3		
RT	271+89	PE	3.1		
RT	274+26	PE	3.6		
RT	280+95	FE		1.7	
LT	281+42	PE	2.8		
LT	283+44	FE		1.4	
RT	288+47	PRA	4.2		
LT	293+66	FE		1.4	
LT	305+85	FE		1.4	
RT	311+43	FE	1.4		
LT	311+43	FE	1.4		
LT	317+21	MBT		1.9	
RT	317+52	PE	2.4		
LT	318+00	FE		1.4	
LT	319+05	MBT		1.9	
LT	319+76	CE	6.7		
LT	324+68	FE		1.4	
LT	330+98	FE		1.4	
RT	330+98	FE		1.4	
RT	333+77	FE		1.2	
LT	333+77	PE	3.7		
RT	338+14	PRA	4.8		
LT	338+14	PRA	4.7		
RT	352+23	PE	3.1		
LT	352+23	MBT		1.9	
RT	358+80	FE		1.7	
LT	365+81	PE	3.2		
RT	368+94	PE	2.9		
RT	372+27	PRA	5.3		
LT	383+29	PRA	4.1		
RT	384+33	FE		1.8	
RT	386+29	PE	2.9		
LT	386+29	MBT		1.9	
LT	387+36	PE	3.4		
RT	395+23	PE	5.1		
LT	395+43	MBT		1.9	
RT	397+95	FE	1.5		
LT	397+95	FE	1.4		
LT	406+86	FE		1.6	
RT	407+20	CE	14.0		
LT	411+35	PE		1.4	
RT	411+68	PE		1.4	
LT	411+97	MBT		1.4	
RT	412+53	PE	3.0		
LT	416+98	PE	2.6		
LT	420+96	PE	4.4		
RT	427+91	FE		1.4	
RT	432+49	PE	2.7		
LT	432+49	MBT		1.9	
RT	436+49	FE		1.5	
RT	439+38	PE	2.7		
RT	445+72	PE		1.5	
RT	450+22	PRA		1.3	
LT	450+22	PRA		1.3	
RT	450+78	CE		1.4	
RT	451+73	CE		1.4	
RT	458+35	FE		1.4	
LT	476+93	FE	2.9		
RT	478+17	FE		1.7	
RT	487+02	FE		1.4	
LT	491+38	FE		1.4	
RT	0+00	PRA	7.3		
LT	0+00	PRA	4.0		
RT	3+90	FE		1.4	
LT	4+00	FE		1.4	
LT	8+05	FE		1.4	
RT	17+95	PE	3.2		
LT	21+25	FE		1.4	
RT	21+48	FE		1.4	
RT	23+70	PE	2.7		
LT	23+70	FE		1.4	
RT	25+90	FE		1.4	
LT	26+98	FE		1.6	
RT	30+50	FE		1.4	
RT	33+10	FE		1.4	
LT	34+75	FE		1.4	
RT	39+98	FE		1.4	
LT	39+98	FE		1.4	
RT	48+86	FE		1.5	
LT	52+00	FE		1.3	
RT	52+47	PRA	3.6		
LT	52+47	PRA	3.7		
LT	53+00	FE		1.2	
RT	53+87	PE		1.3	
LT	60+11	PE	3.3		
LT	62+66	FE		1.4	
RT	73+00	FE		1.4	
LT	73+71	FE		1.4	
RT	83+38	FE		1.3	
LT	83+38	FE		1.3	
RT	93+56	FE		1.4	
LT	106+50	FE		1.3	
RT	107+03	PRA	11.6		
LT	107+03	PRA	4.4		
RT	108+66	PE	3.3		
RT	119+32	FE		1.5	
LT	122+25	PE	2.6		
LT	123+84	FE		1.3	
LT	127+36	MBT		1.9	
RT	128+64	PE	3.4		
LT	137+39	FE		1.4	
RT	139+04	PE	2.7		
LT	139+39	MBT		1.9	
RT	145+79	FE		1.3	
LT	147+36	FE		1.3	
RT	155+56	PE	2.6		
LT	158+98	PRA	7.2		
RT	159+39	PE	2.6		
LT	159+50	PE		1.3	
RT	161+48	PE	2.4		
RT	162+19	PE	2.5		
RT	173+44	PE	3.2		
LT	183+00	FE		1.3	
RT	185+37	PRA	3.6		
LT	185+37	PRA	4.4		
LT	191+36	FE		1.4	
RT	192+21	FE		1.8	
RT	202+77	PRA	6.0		
LT	202+77	PE	3.3		
LT	204+72	FE		1.4	
LT	210+55	FE		1.3	
RT	216+23	FE		1.6	
RT	223+68	FE		1.4	
LT	234+25	FE		1.3	
RT	237+26	PE		1.6	
LT	251+24	FE		1.3	
RT	251+24	PRA	6.2		
RT	257+63	FE		2.0	
LT	268+52	PRA	6.2		

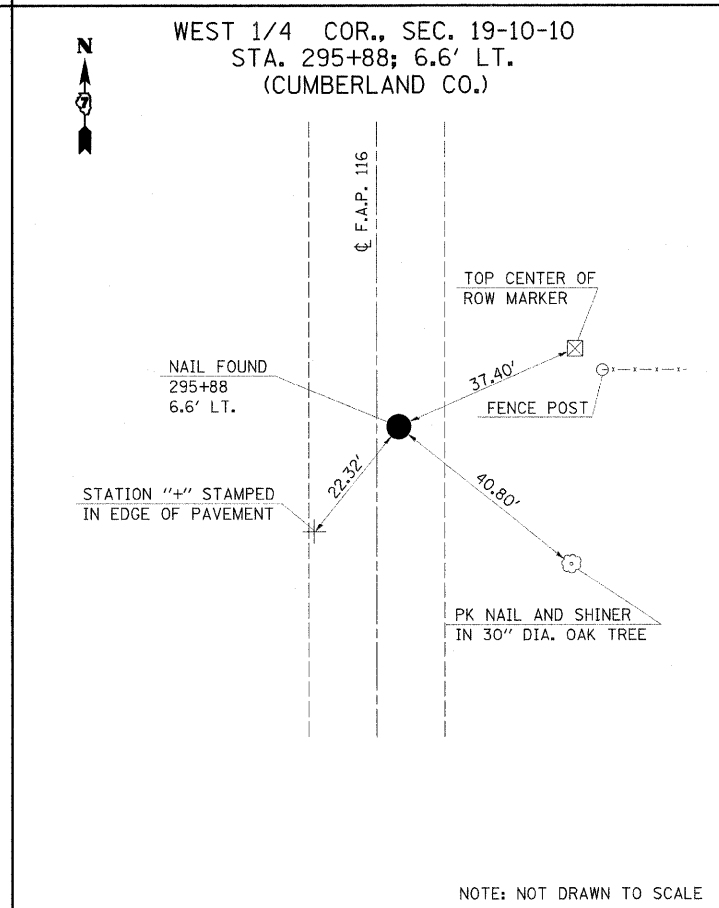
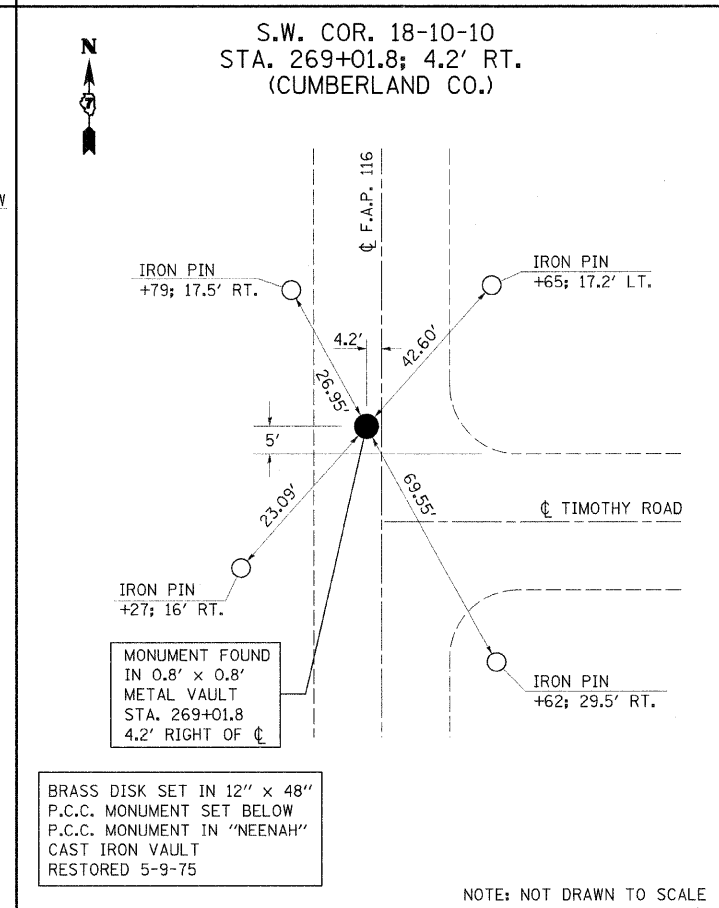
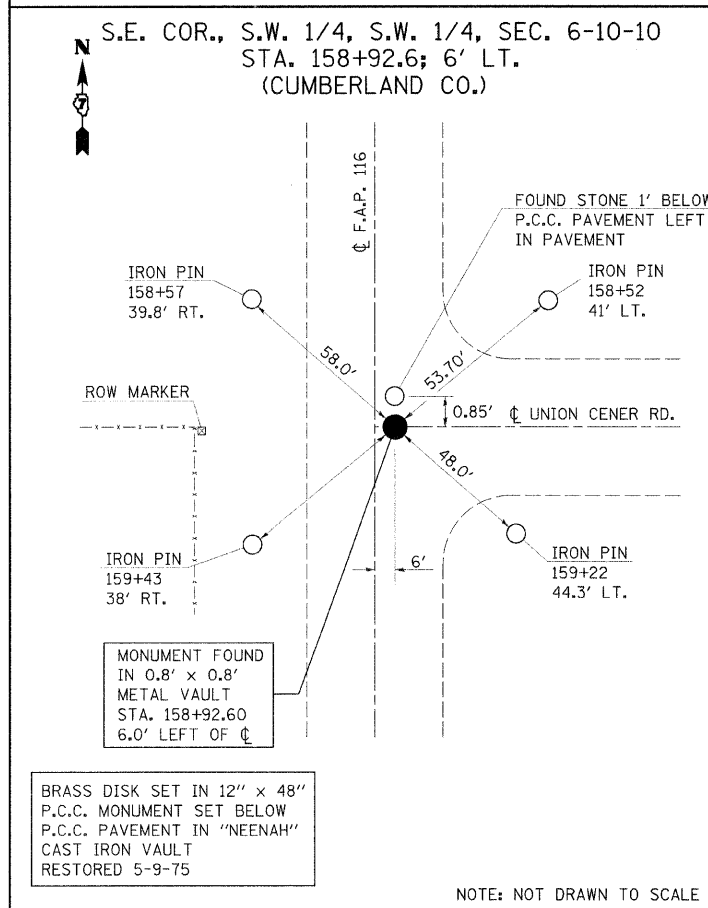
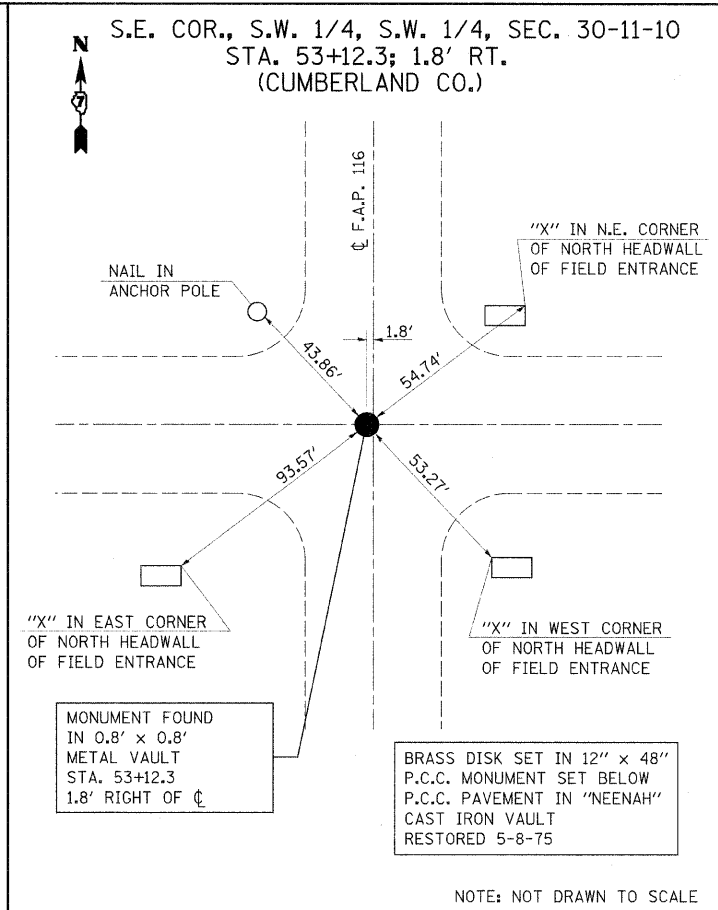
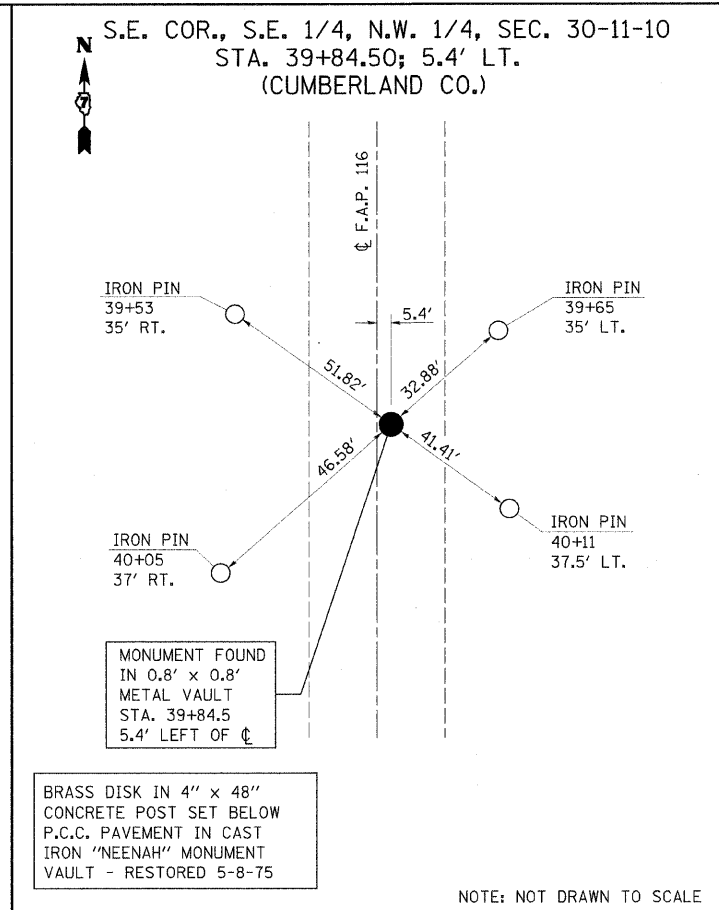
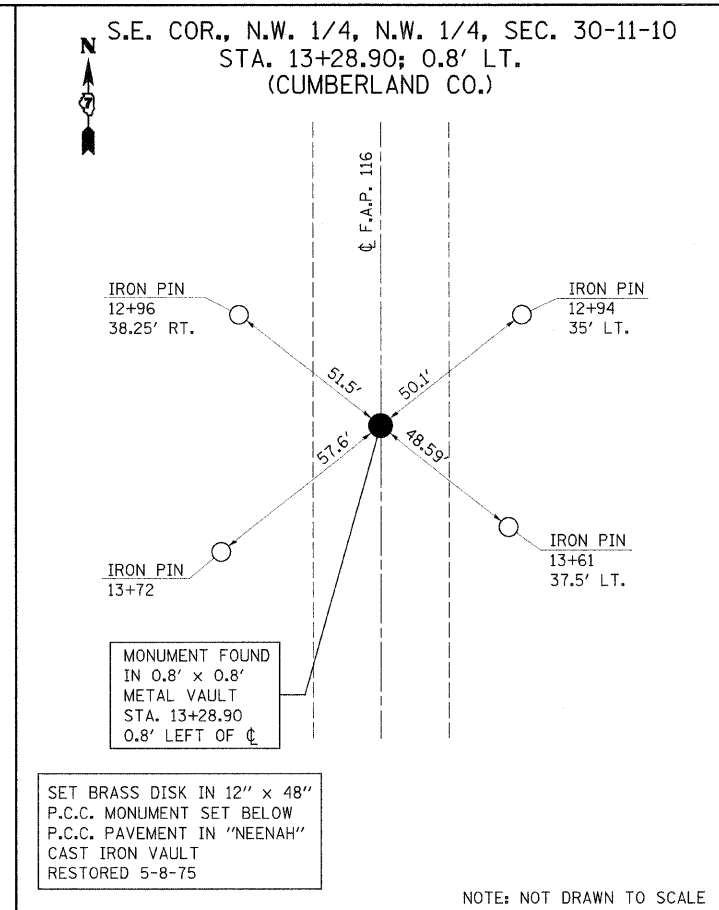
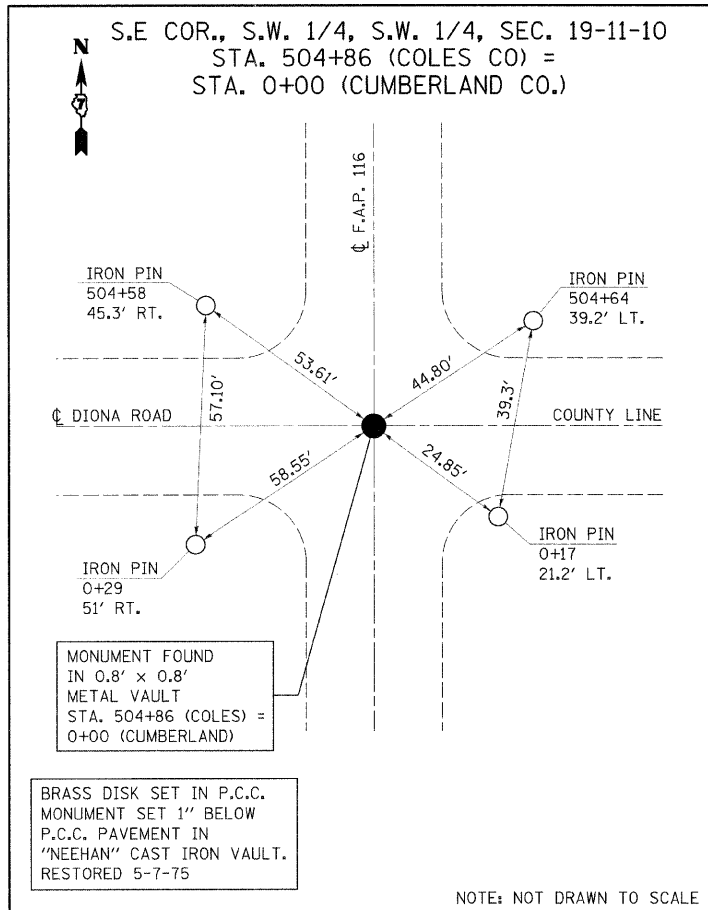
FE - FIELD ENTRANCE PRA - PUBLIC ROAD APPROACH  
PE - PRIVATE ENTRANCE MBT - MAILBOX TURNOUT  
CE - COMMERCIAL ENTRANCE

\*BITUMINOUS MATERIALS AND AGGREGATE (PRIME COAT) FOR ENTRANCES AND PUBLIC ROAD APPROACHES SHALL BE CONSIDERED INCIDENTAL TO INCIDENTAL HOT-MIX ASPHALT SURFACING.

\* COLES AND CUMBERLAND COUNTIES







SURVEY MARKER SCHEDULE

LOCATION	OFFSET	FURNISHING AND INSTALLING PROPERTY MARKERS	
		FOOT	EACH
339+17.81	LT 20.35	1.0	
397+64.00	LT 3.50	1.0	
450+80.00	RT 33.00	1.0	
504+86.00	0.00	1.0	
13+28.90	LT 0.80	1.0	
39+84.50	LT 5.50	1.0	
53+12.30	RT 1.80	1.0	
158+92.60	LT 6.00	1.0	
269+01.80	RT 4.20	1.0	
295+88.00	RT 6.60	1.0	
352+66.07	0.00	1.0	
402+54.00	0.00	1.0	
TOTAL		12.0	

FILE NAME =	USER NAME = swartzrw	DESIGNED -	REVISED -
ca:\pwork\VP\DOT\SMARTZRW\0119058\d774262-sh1-detail.s.dgn		DRAWN -	REVISED -
		CHECKED -	REVISED -
		DATE -	REVISED -

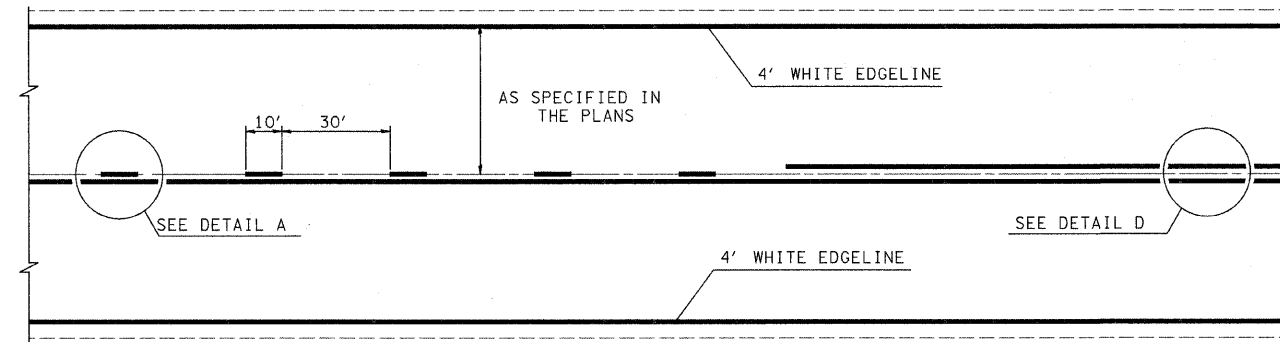
STATE OF ILLINOIS  
DEPARTMENT OF TRANSPORTATION

TIE POINTS  
SCALE: NA SHEET NO. 1 OF 1 SHEETS STA. TO STA.

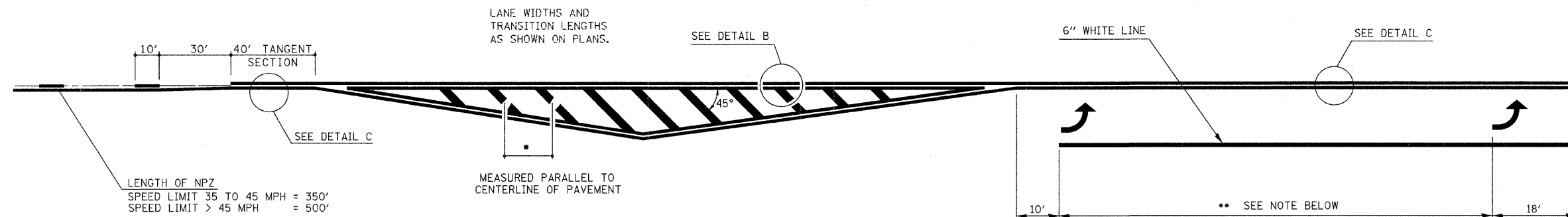
\* COLES AND CUMBERLAND COUNTIES

F.A.P. RTE.	SECTION	COUNTY	TOTAL SHEETS	SHEET NO.
116	(111,112,113-11RS-6		20	18

CONTRACT NO. 74262  
ILLINOIS FED. AID PROJECT



TYPICAL CENTERLINE, NO PASSING ZONE LINE (NPZ) & EDGELINE MARKINGS  
2-LANE PAVEMENT



LENGTH OF NPZ  
SPEED LIMIT 35 TO 45 MPH = 350'  
SPEED LIMIT > 45 MPH = 500'

**\*DIAGONAL SPACING**

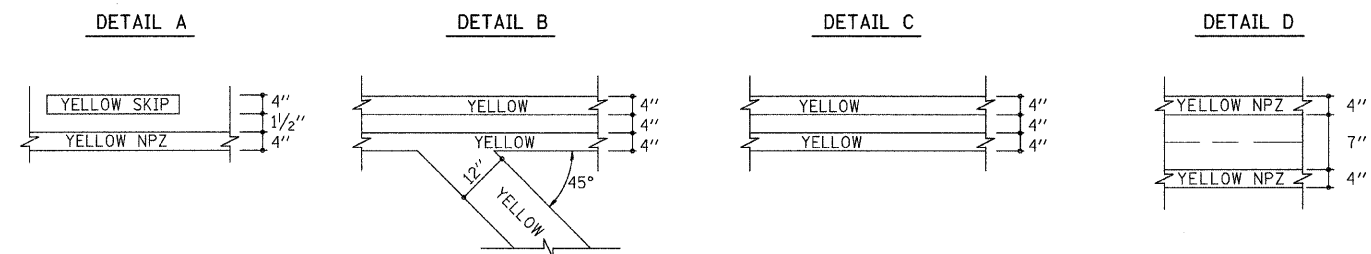
SPEED LIMIT	< 30 MPH	= 15'
SPEED LIMIT	30 TO 45 MPH	= 20'
SPEED LIMIT	> 45 MPH	= 30'

6" WHITE LINE  
SEE DETAIL C

10' \*\* SEE NOTE BELOW 18'

\*\* PLACE THE FIRST ARROW EVEN WITH THE BEGINNING OF THE TURN BAY. PLACE ANOTHER ARROW 18' BACK FROM THE STOP BAR. IF REQUIRED, ADD ADDITIONAL ARROWS TO MAINTAIN A MAXIMUM OF 80' SPACING.

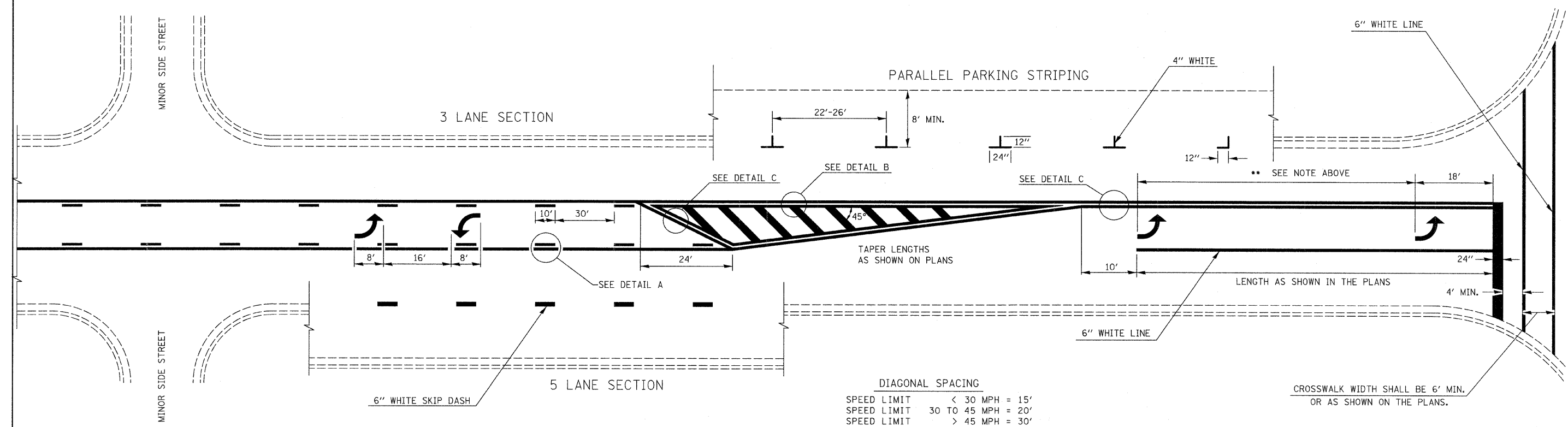
- NOTES:
1. OMIT EDGELINE THRU SIDE ROADS.
  2. TAPER RATES, LANE WIDTHS, AND STORAGE LENGTHS AS SHOWN ON THE PLANS.
  3. WHEN MEDIANS ARE PRESENT, PLACE A SINGLE YELLOW STRIPE AROUND ITS PERIMETER.



NOT TO SCALE

FILE NAME =	USER NAME = swartzrw	DESIGNED -	REVISED -	<b>STATE OF ILLINOIS DEPARTMENT OF TRANSPORTATION</b>	<b>TYPICAL APPLICATION OF PAVEMENT MARKINGS</b>		• COLES AND CUMBERLAND COUNTIES		
c:\pwork\pwidot\SWARTZRW\0119050\d774262-shr-details.dgn	PLT SCALE = 20.0000' / IN.	DRAWN -	REVISED -		F.A.P. RTE.	SECTION	COUNTY	TOTAL SHEETS	SHEET NO.
PLT DATE = 4/18/2009	DATE -	CHECKED -	REVISED -		116	(111,112,113-1)RS-3	•	20	19
		DATE -	REVISED -		SCALE: NA SHEET NO. 1 OF 2 SHEETS STA. TO STA.		CONTRACT NO. 74262 ILLINOIS FED. AID PROJECT		

\*\* PLACE THE FIRST ARROW EVEN WITH THE BEGINNING OF THE TURN BAY.  
 PLACE ANOTHER ARROW 18' BACK FROM THE STOP BAR, IF REQUIRED,  
 ADD ADDITIONAL ARROWS TO MAINTAIN A MAXIMUM OF 80' SPACING.



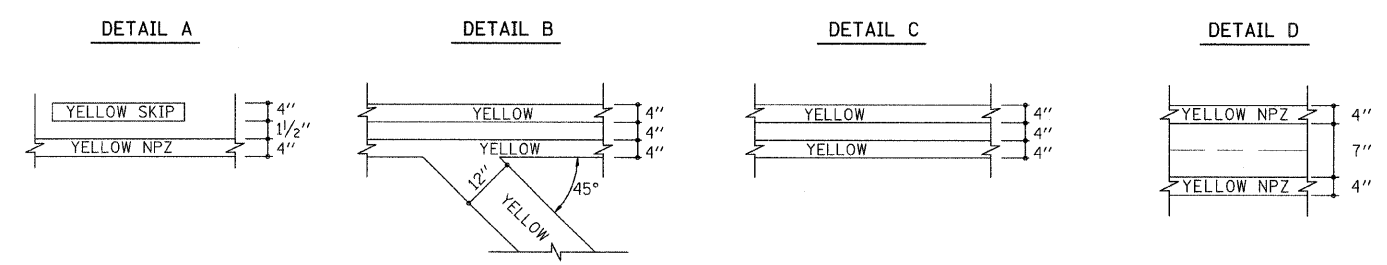
DIAGONAL SPACING

SPEED LIMIT	< 30 MPH	= 15'
SPEED LIMIT	30 TO 45 MPH	= 20'
SPEED LIMIT	> 45 MPH	= 30'

CROSSWALK WIDTH SHALL BE 6' MIN.  
 OR AS SHOWN ON THE PLANS.

**TYPICAL BI-DIRECTIONAL TURN LANE MARKINGS**  
 (SHOWING TRANSITION TO EXCLUSIVE LEFT TURN LANE)

- NOTES:
1. NO LESS THAN 2 ARROWS SHALL BE USED.
  2. TAPER RATES, LANE WIDTHS, AND STORAGE LENGTHS AS SHOWN ON THE PLANS.
  3. AVOID PLACING BI-DIRECTIONAL ARROWS IN INTERSECTIONS.
  4. BI-DIRECTIONAL ARROWS SHALL BE SPACED A MAXIMUM OF 250'.



NOT TO SCALE

FILE NAME =	USER NAME = swartzrw	DESIGNED -	REVISED -	<b>STATE OF ILLINOIS DEPARTMENT OF TRANSPORTATION</b>	<b>TYPICAL APPLICATION OF PAVEMENT MARKINGS</b>			* COLES AND CUMBERLAND COUNTIES	
os:\pwork\PWIDOT\SWARTZRW\d0119058\d74262-sht-details.dgn	4262-sht-details.dgn	DRAWN -	REVISED -					F.A.P. RTE.	SECTION
	PLOT SCALE = 20,0000 1/ IN.	CHECKED -	REVISED -		116	(111,112,113-1)RS-3	*	20	20
	PLOT DATE = 4/10/2009	DATE -	REVISED -		CONTRACT NO. 74262		ILLINOIS FED. AID PROJECT		
				SCALE: NA	SHEET NO. 2 OF 2 SHEETS	STA.	TO STA.		