

STATE OF ILLINOIS  
DEPARTMENT OF TRANSPORTATION  
DIVISION OF HIGHWAYS

PROPOSED  
HIGHWAY PLANS

FAP ROUTE 749 (IL 133)  
SECTION 119RS-2

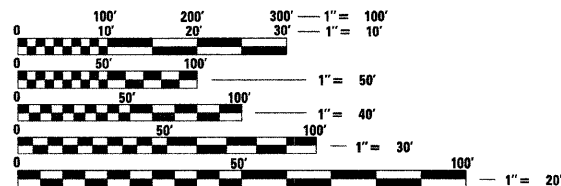
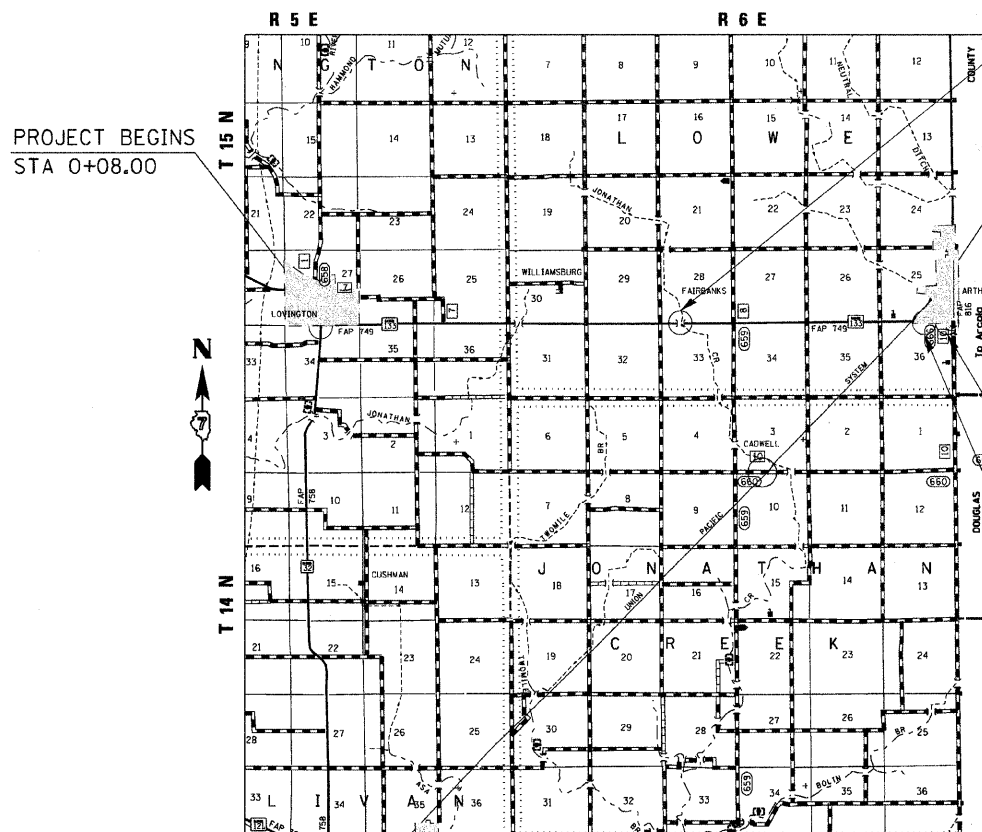
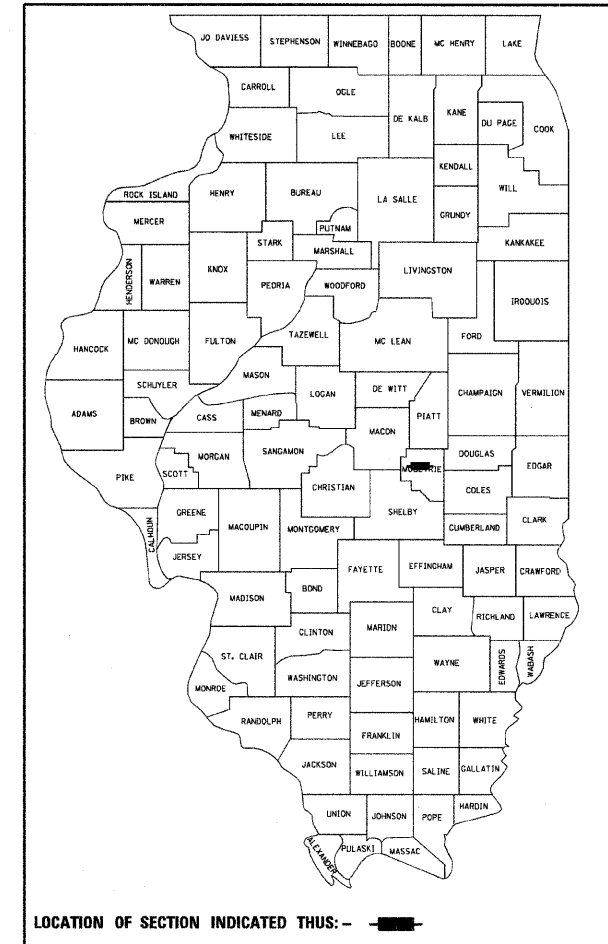
3P RESURFACING  
MOULTRIE COUNTY

C-97-066-09

F.A.P. R.T.E.	SECTION	COUNTY	TOTAL SHEETS	SHEET NO.
749	119RS-2	MOULTRIE	26	1
		ILLINOIS	CONTRACT NO. 74381	

FOR INDEX OF SHEETS, SEE SHEET NO. 2

D-97-037-09



FULL SIZE PLANS HAVE BEEN PREPARED USING STANDARD ENGINEERING SCALES. REDUCED SIZED PLANS WILL NOT CONFORM TO STANDARD SCALES. IN MAKING MEASUREMENTS ON REDUCED PLANS, THE ABOVE SCALES MAY BE USED.

J.U.L.I.E.  
JOINT UTILITY LOCATION INFORMATION FOR EXCAVATION  
1-800-892-0123  
OR 811

PROJECT ENGINEER: TOM RONAN  
PROJECT MANAGER: JEFF DAVISON

CONTRACT NO. 74381

GROSS LENGTH = 45,602.0 FT. = 8.60 MILE  
NET LENGTH = 45,465.7 FT. = 8.60 MILE

STATE OF ILLINOIS  
DEPARTMENT OF TRANSPORTATION  
DIVISION OF HIGHWAYS

SUBMITTED April 10 20 09

*Roger A. Swidell*  
DEPUTY DIRECTOR OF HIGHWAYS, REGION ENGINEER

May 1, 20 09  
*Charles G. Ingersoll*  
ENGINEER OF DESIGN AND ENVIRONMENT

May 1, 20 09  
*Christine M. Reed*  
DIRECTOR OF HIGHWAYS, CHIEF ENGINEER

PRINTED BY THE AUTHORITY  
OF THE STATE OF ILLINOIS

**GENERAL NOTES**

THIS SECTION SHALL BE CONSTRUCTED IN ACCORDANCE WITH THE PLANS, THE "STANDARD SPECIFICATIONS FOR ROAD AND BRIDGE CONSTRUCTION", ADOPTED JANUARY 1, 2007; THE "SUPPLEMENTAL SPECIFICATIONS AND RECURRING SPECIAL PROVISIONS" INDICATED ON THE CHECK SHEET, AND "THE SPECIAL PROVISIONS" INCLUDED IN THE PROPOSAL.

THE WORK INCLUDED IN THIS SECTION CONSISTS OF REHABILITATING APPROXIMATELY 8.6 MILES OF FAP 749 (IL 133) BY MILLING, PATCHING, RESURFACING, AND ANY OTHER WORK NECESSARY TO COMPLETE THIS SECTION.

SHORT TERM PAVEMENT MARKING ON THE MILLED SURFACE SHALL BE PAINT. ALL OTHER SHORT TERM PAVEMENT MARKINGS SHALL BE TAPE.

THE ACTUAL LOCATIONS OF PAVEMENT PATCHING SHALL BE DETERMINED BY THE ENGINEER IN THE FIELD.

ANY SECTION CORNERS DISTURBED DURING CONSTRUCTION SHALL BE RE-ESTABLISHED BY A REGISTERED LAND SURVEYOR AT THE CONTRACTOR'S EXPENSE. A LIST OF SECTION CORNERS WITHIN THE PROJECT LIMITS IS CONTAINED IN THE SCHEDULE OF QUANTITIES.

ALL ELEVATIONS SHOWN IN PLANS ARE BASED ON U.S.G.S. DATUM.

THE LOCATIONS AND/OR DEPTHS OF UNDERGROUND UTILITIES SHOWN HAVE BEEN TAKEN FROM INFORMATION FURNISHED BY THE UTILITY OWNERS AND MUST BE CONSIDERED APPROXIMATE. FIELD MARKINGS OF FACILITIES IN CRITICAL AREAS MAY BE OBTAINED BY PROVIDING A MINIMUM OF 96 HOURS ADVANCE NOTICE THROUGH THE J.U.L.I.E. SYSTEM BY CALLING 800-892-0123.

THE PAVEMENT SHALL BE CLEANED IN ACCORDANCE WITH SECTION 406 OF THE STANDARD SPECIFICATIONS PRIOR TO THE PLACING OF THE BITUMINOUS OVERLAYS. AREAS TO BE PREPARED SHALL BE DETERMINED BY THE ENGINEER AND WILL INCLUDE:

1. BROKEN OR DELAMINATED CONCRETE
2. PATCHES OF TAR OR COLD MIX
3. EXISTING UNSTABLE PATCHES
4. DETERIORATED AREAS BEYOND EXISTING PATCHES
5. CENTERLINE JOINT

THE CONTRACTOR SHALL PROVIDE INTERNET ACCESS TO THE HMA PLANT QUALITY CONTROL LAB SO THAT HMA PLANT REPORTS CAN BE E-MAILED TO THE DISTRICT HEADQUARTERS. THIS WORK WILL NOT BE PAID FOR SEPARATELY BUT SHALL BE INCLUDED IN THE UNIT PRICES FOR OTHER ITEMS IN THE CONTRACT.

THE RESIDENT ENGINEER SHALL BE THE SOLE JUDGE CONCERNING THE CURING TIME FOR THE HMA SURFACE COURSE.

BITUMINOUS MATERIALS (PRIME COAT) SHALL BE EITHER RC-70 OR SS-1HP.

AGGREGATE FOR AGGREGATE SHOULDERS ON PRIMARY ROUTES SHALL BE CRUSHED STONE OR RAP.

COST OF REMOVAL OF TEMPORARY RAMP SHALL BE INCLUDED IN THE UNIT PRICE FOR TEMPORARY RAMP.

THE FOLLOWING MIXTURE REQUIREMENTS ARE APPLICABLE TO THIS PROJECT:

APPLICATION	AC/PG	DESIGN AIR VOIDS	MIXTURE COMPOSITION	FRICTION AGGREGATE
SURFACE COURSE (1 1/2") HOT MIX ASPHALT SURFACE COURSE, MIX "C", N70 (1 1/2")	PG 64-22	4%@NDESIGN = 70	IL-9.5	MIXURE C
LEVELING BINDER (3/4") LEVELING BINDER (MACHINE METHOD) N70	PG 64-22	4%@NDESIGN = 70	IL-9.5	NA
INCIDENTAL HMA SURFACING HOT MIX ASPHALT SURFACE COURSE, MIX "C", N50	PG 64-22	4%@NDESIGN = 50	IL-9.5	MIXTURE C
CLASS D PATCHES HOT MIX ASPHALT BINDER COURSE, IL-19.0, N70	PG 64-22	4%@NDESIGN = 70	IL-19.0	NA
SHOULDER MIX W. OF CADWELL RD. HOT-MIX ASPHALT SURFACE COURSE, MIX "C", N30	PG 64-22	4%@NDESIGN = 30	IL-9.5L	MIXTURE C
SHOULDER MIX E. OF CADWELL RD. HOT-MIX ASPHALT SHOULDERS, SPECIAL	PG 64-22	4%@NDESIGN = 50	IL-9.5	NA

**INDEX OF SHEETS**

- 1 COVER SHEET
- 2 INDEX, STANDARDS AND GENERAL NOTES
- 2 GENERAL NOTES
- 3 SUMMARY OF QUANTITIES
- 4-6 TYPICAL SECTIONS
- 7-8 TIE SHEETS
- 9-12 SCHEDULE OF QUANTITIES
- 13-20 PLAN SHEETS
- 21-26 DETAIL SHEETS

- 000001-05 STANDARD SYMBOLS, ABBREVIATIONS, AND PATTERNS
- 001006 DECIMAL OF AN INCH AND OF A FOOT
- 406201-01 MAILBOX TURNOUT
- 442201-03 CLASS C AND D PATCHES
- 482011-03 BITUMINOUS SHOULDER STRIPS/SHOULDERS WITH RS OR WIDENING & RS PROJECTS
- 701001-01 OFF-ROAD OPERATIONS, 2L, 2W, MORE THAN 15' AWAY<sup>5</sup>/<sub>32</sub> AWAY
- 701006-02 OFF-ROAD OPERATIONS, 2L, 2W, 15' TO 24" FROM PAVEMENT EDGE<sup>5</sup>/<sub>32</sub> TO 24" FROM PAVEMENT EDGE
- 701011-02 OFF-ROAD MOVING OPERATIONS, 2L, 2W, DAY ONLY
- 701301-03 LANE CLOSURE, 2L, 2W, SHORT TIME OPERATIONS
- 701306-02 LANE CLOSURE, 2L, 2W, SLOW MOVING OPERATIONS DAY ONLY, FOR SPEEDS >= 45 MPH
- 701311-03 LANE CLOSURE, 2L, 2W, MOVING OPERATIONS - DAY ONLY
- 701336-05 LANE CLOSURE, 2L, 2W, WORK AREAS IN SERIES, FOR SPEEDS >= 45 MPH
- 701901-01 TRAFFIC CONTROL DEVICES

SUMMARY OF QUANTITIES			100% STATE	CONSTRUCTION TYPE CODE		
CODE NO	ITEM	UNIT	TOTAL QUANTITIES	1000		
40200800	AGGREGATE SURFACE COURSE, TYPE B	TON	118	118		
40600100	BITUMINOUS MATERIALS (PRIME COAT)	GALLON	20401	20401		
40600300	AGGREGATE (PRIME COAT)	TON	408	408		
40600635	LEVELING BINDER (MACHINE METHOD), N70	TON	5599	5599		
40600895	CONSTRUCTING TEST STRIP	EACH	1	1		
40600982	HOT-MIX ASPHALT SURFACE REMOVAL - BUTT JOINT	SO YD	2829	2829		
40600990	TEMPORARY RAMP	SO YD	212	212		
40603315	HOT-MIX ASPHALT SURFACE COURSE, MIX "C", N70	TON	11198	11198		
40800050	INCIDENTAL HOT-MIX ASPHALT SURFACING	TON	37	37		
44000158	HOT-MIX ASPHALT SURFACE REMOVAL, 2 1/4"	SO YD	3463	3463		
44000198	HOT-MIX ASPHALT SURFACE REMOVAL, VARIABLE DEPTH	SO YD	129558	129558		
44201789	CLASS D PATCHES, TYPE II, 12 INCH	SO YD	3318	3318		
44201794	CLASS D PATCHES, TYPE III, 12 INCH	SO YD	580	580		
44201796	CLASS D PATCHES, TYPE IV, 12 INCH	SO YD	1010	1010		
48101200	AGGREGATE SHOULDERS, TYPE B	TON	1193	1193		
48203100	HOT-MIX ASPHALT SHOULDERS	TON	4477	4477		
48203105	HOT-MIX ASPHALT SHOULDERS, SPECIAL	TON	2482	2482		
66700110	PERMANENT SURVEY MARKERS TO BE ADJUSTED	EACH	12	12		
67000500	ENGINEER'S FIELD OFFICE, TYPE B	CAL MO	5	5		
67100100	MOBILIZATION	L SUM	1	1		
70100460	TRAFFIC CONTROL AND PROTECTION, STANDARD 701306	L SUM	1	1		
70100600	TRAFFIC CONTROL AND PROTECTION, STANDARD 701336	L SUM	1	1		
70300100	SHORT-TERM PAVEMENT MARKING	FOOT	18186	18186		
70300220	TEMPORARY PAVEMENT MARKING - LINE 4"	FOOT	101821	101821		
70301000	WORK ZONE PAVEMENT MARKING REMOVAL	SO FT	1703	1703		
*78000100	THERMOPLASTIC PAVEMENT MARKING - LETTERS AND SYMBOLS	SO FT	230.4	230.4		
*78000200	THERMOPLASTIC PAVEMENT MARKING - LINE 4"	FOOT	8931	8931		
*78000650	THERMOPLASTIC PAVEMENT MARKING - LINE 24"	FOOT	163	163		
*78001110	PAINT PAVEMENT MARKING - LINE 4"	FOOT	93501	93501		
*78100100	RAISED REFLECTIVE PAVEMENT MARKER	EACH	538	538		
X0301232	SURVEY MARKER VAULT	EACH	1	1		
Z0025500	FURNISHING AND INSTALLING PROPERTY MARKERS	EACH	3	3		
Z0048665	RAILROAD PROTECTIVE LIABILITY INSURANCE	L SUM	1	1		

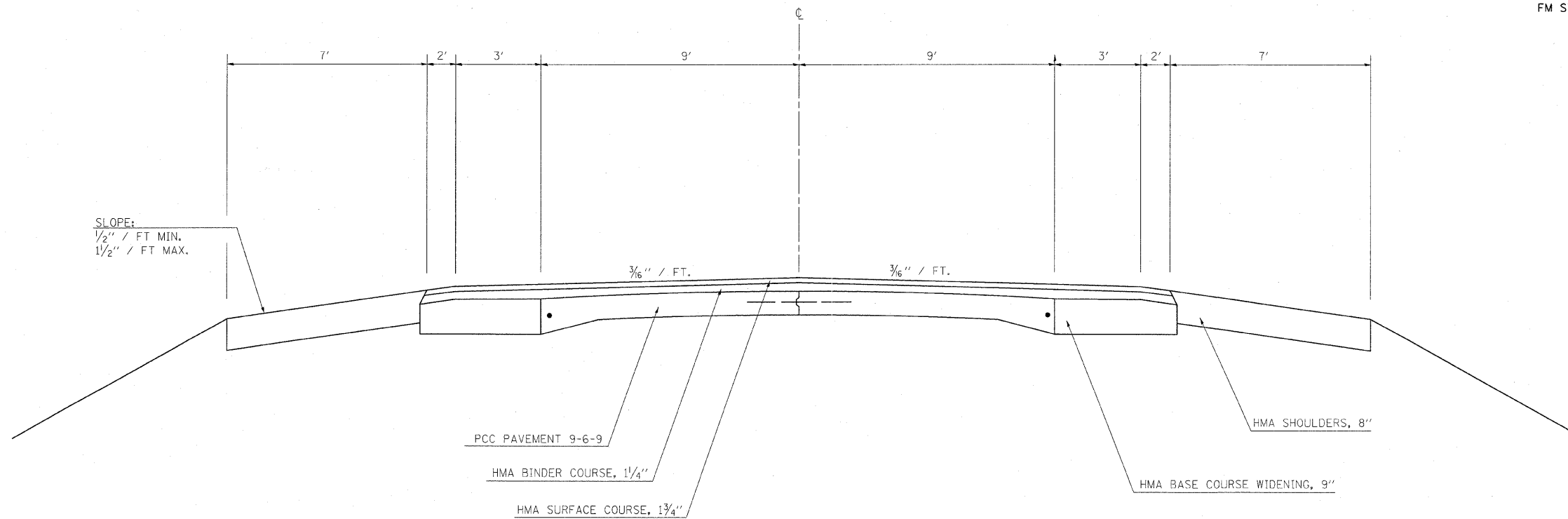
\*Specialty Items

FILE NAME =	USER NAME = teeslayck	DESIGNED -	REVISED -	<b>STATE OF ILLINOIS DEPARTMENT OF TRANSPORTATION</b>	<b>SUMMARY OF QUANTITIES</b>	F.A.P. RTE.	SECTION	COUNTY	TOTAL SHEETS	SHEET NO.	
ct\pwwork\pwwid\TEASLEYCK\0121195\07	4381-sh1-500.dgn	DRAWN -	REVISED -			749	119 RS-2	Moultrie	26	3	
	PLLOT SCALE = 100.0000' / IN.	CHECKED -	REVISED -			CONTRACT NO. 74381					
	PLLOT DATE = 4/10/2009	DATE -	REVISED -			ILLINOIS FED. AID PROJECT					

**EXISTING TYPICAL SECTION**

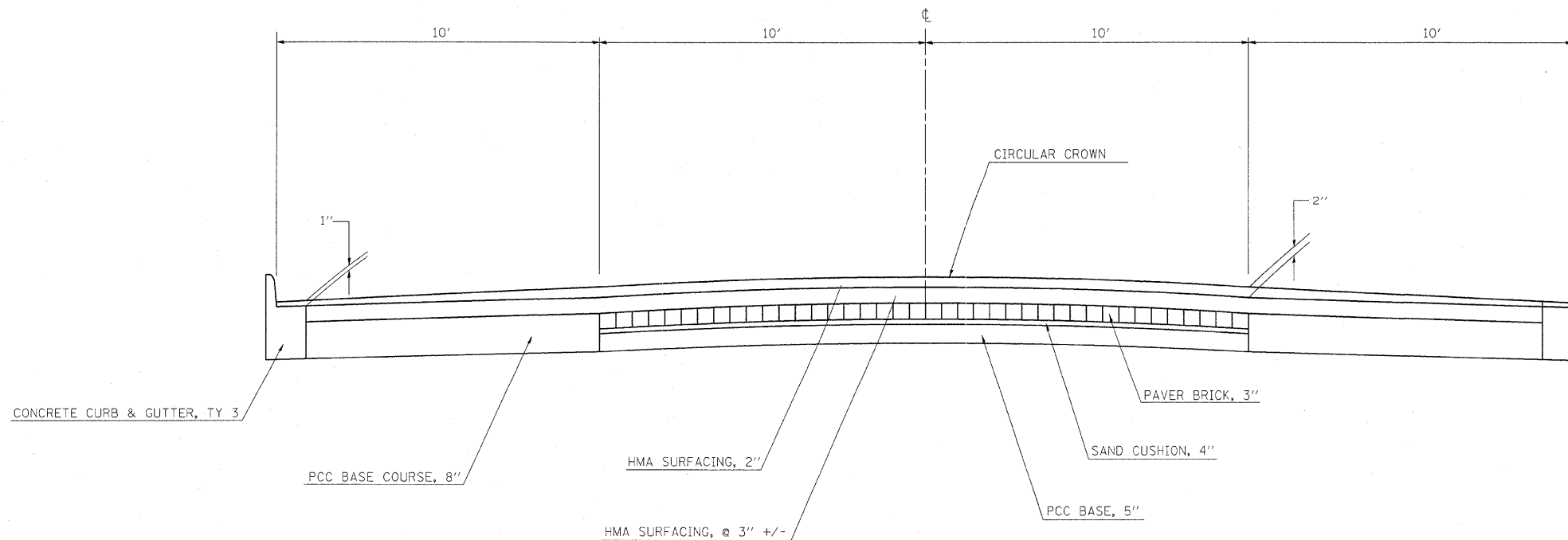
FM STA. 0+08 TO STA 453+12  
 STA 453+12 (BK) = STA. -0+08 (AH)  
 FM STA. -0+08 TO STA. 2+90

PAVING OMISSION  
 FM STA. 258+28.00 TO 259+22.00  
 FM STA. 424+39.81 TO 424+42+79  
 FM STA. 452+09.92 TO 0+13.20



**EXISTING TYPICAL SECTION**

VINE STREET



FILE NAME =  
 c:\pwork\pwork\DOT\TEASLEY\08121195\07

USER NAME = teasleyk  
 4381-sht-typical.dgn  
 PLOT SCALE = 50.0000' / IN.  
 PLOT DATE = 4/18/2009

DESIGNED -  
 DRAWN -  
 CHECKED -  
 DATE -

REVISED -  
 REVISED -  
 REVISED -  
 REVISED -

**STATE OF ILLINOIS  
 DEPARTMENT OF TRANSPORTATION**

**EXISTING TYPICAL  
 SECTIONS**

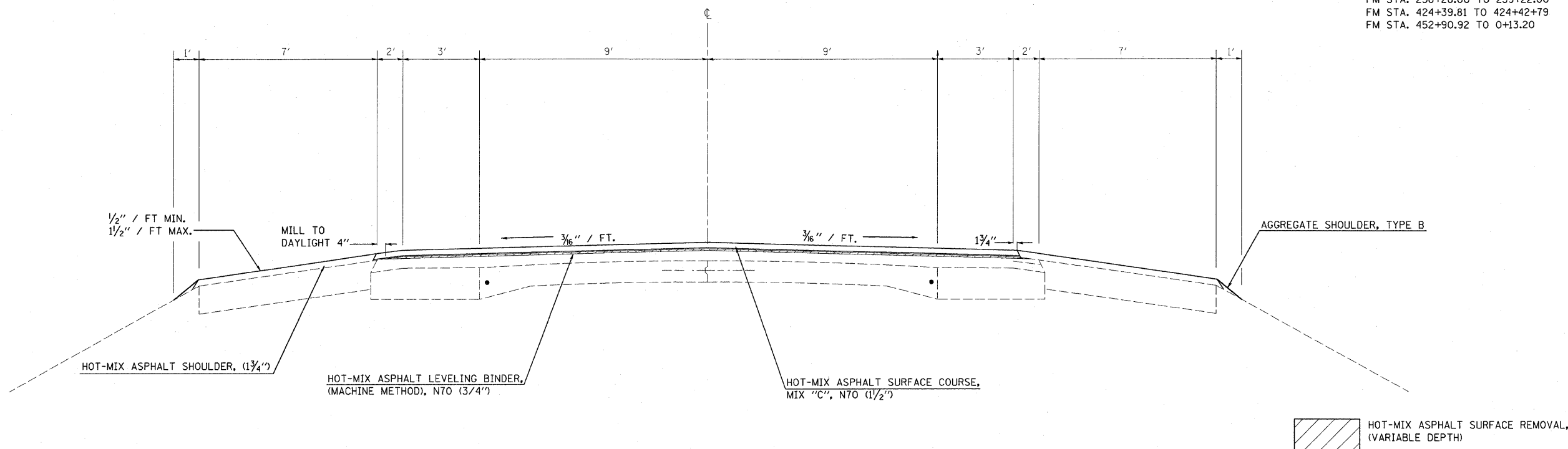
SCALE: SHEET NO. OF SHEETS STA. TO STA.

F.A.P. RTE.	SECTION	COUNTY	TOTAL SHEETS	SHEET NO.
749	119RS-2	MOULTRIE	26	4
CONTRACT NO. 74381				
ILLINOIS FED. AID PROJECT				

**PROPOSED TYPICAL SECTION**

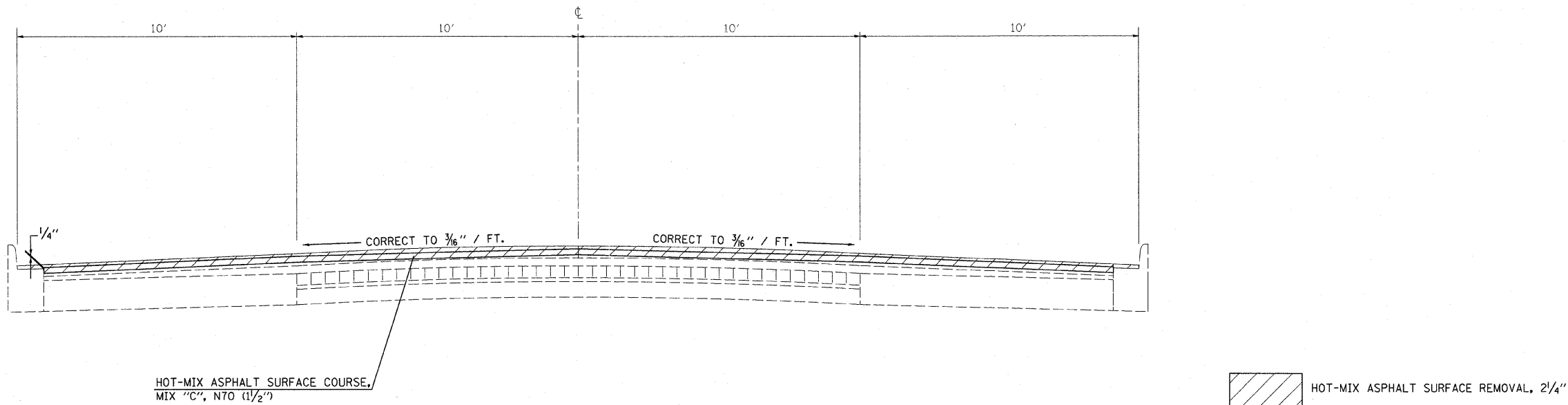
FM STA. 0+08 TO STA 452+90.92

PAVING OMISSION  
 FM STA. 258+28.00 TO 259+22.00  
 FM STA. 424+39.81 TO 424+42+79  
 FM STA. 452+90.92 TO 0+13.20



**PROPOSED TYPICAL SECTION**

VINE STREET



FILE NAME =  
 c:\pwork\pwwd\TASLEYCK\0121195\07

USER NAME = teasleyck  
 4381-sh-typical.dgn  
 PLOT SCALE = 50,0000 ' / IN.  
 PLOT DATE = 4/10/2009

DESIGNED -  
 DRAWN -  
 CHECKED -  
 DATE -

REVISED -  
 REVISED -  
 REVISED -  
 REVISED -

**STATE OF ILLINOIS  
 DEPARTMENT OF TRANSPORTATION**

**PROPOSED TYPICAL  
 SECTIONS**

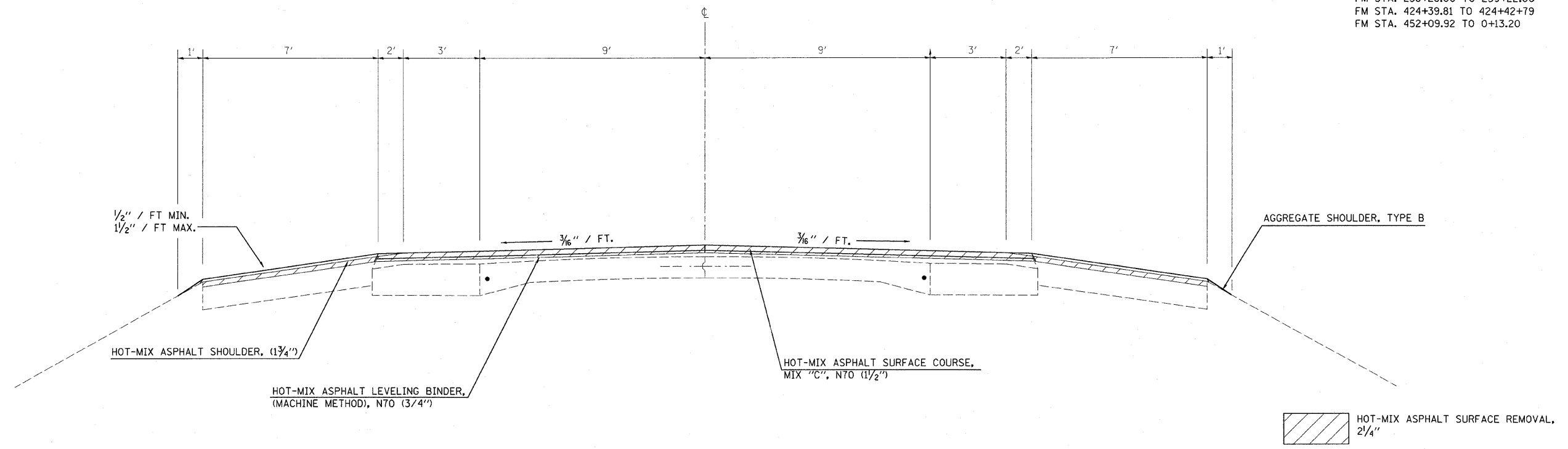
SCALE: SHEET NO. OF SHEETS STA. TO STA.

F.A.P. RTE.	SECTION	COUNTY	TOTAL SHEETS	SHEET NO.
749	119RS-2	MOULTRIE	26	5
CONTRACT NO. 74381				
ILLINOIS FED. AID PROJECT				

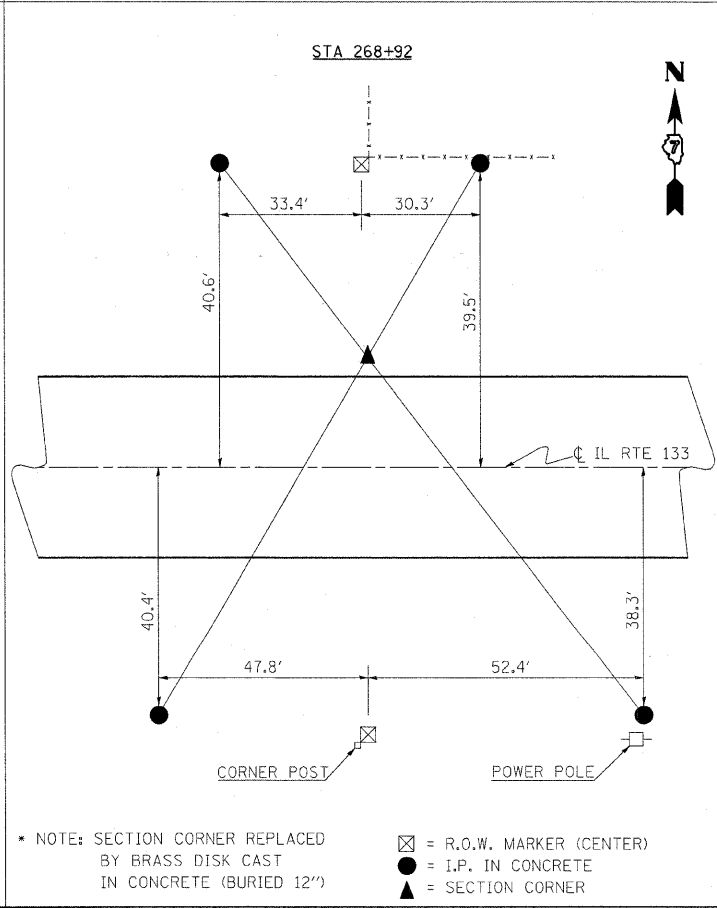
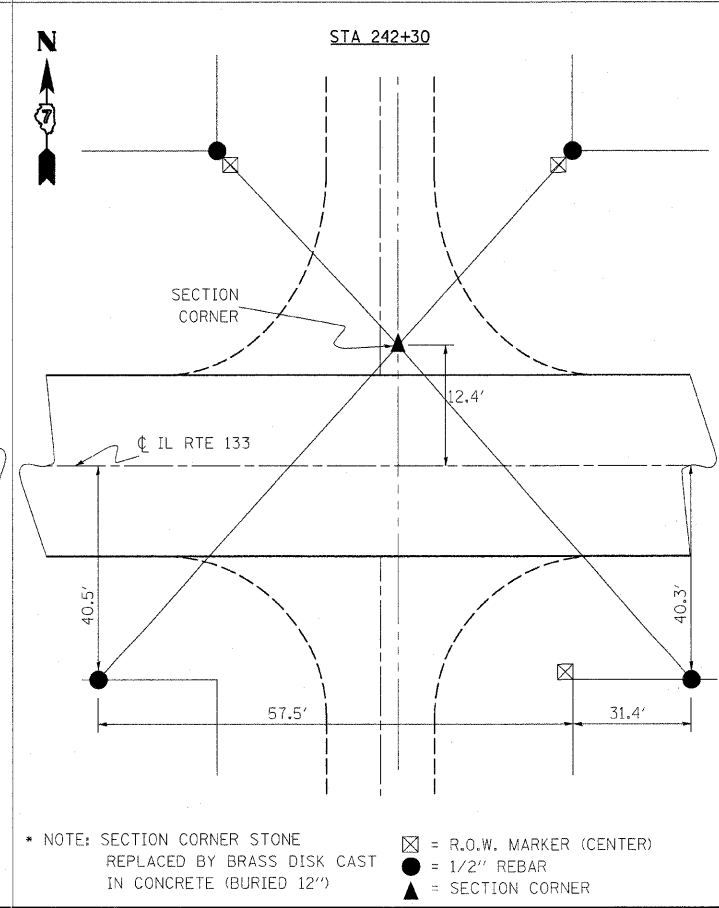
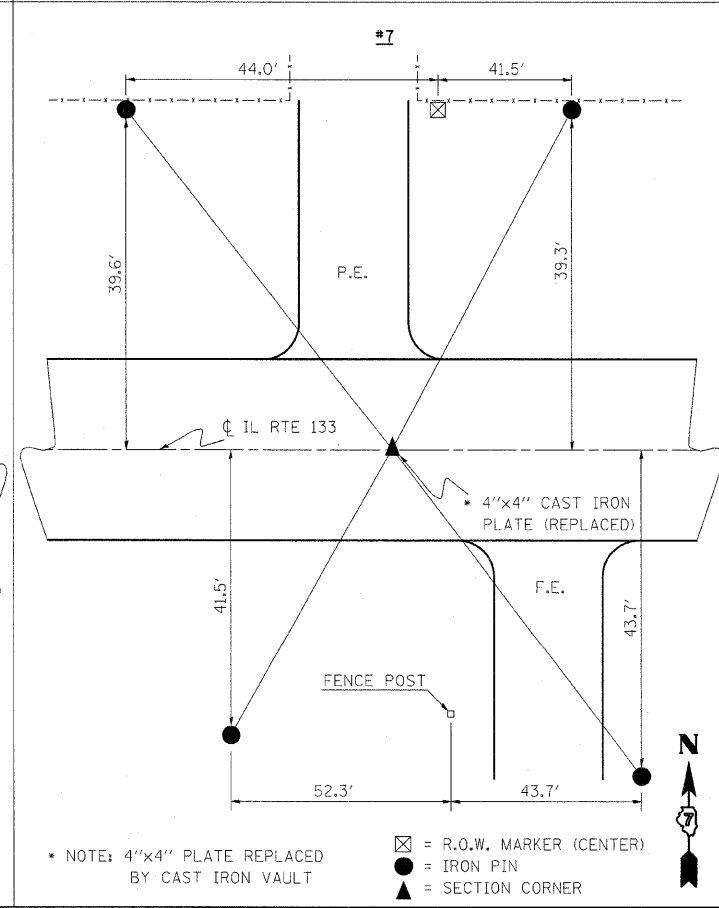
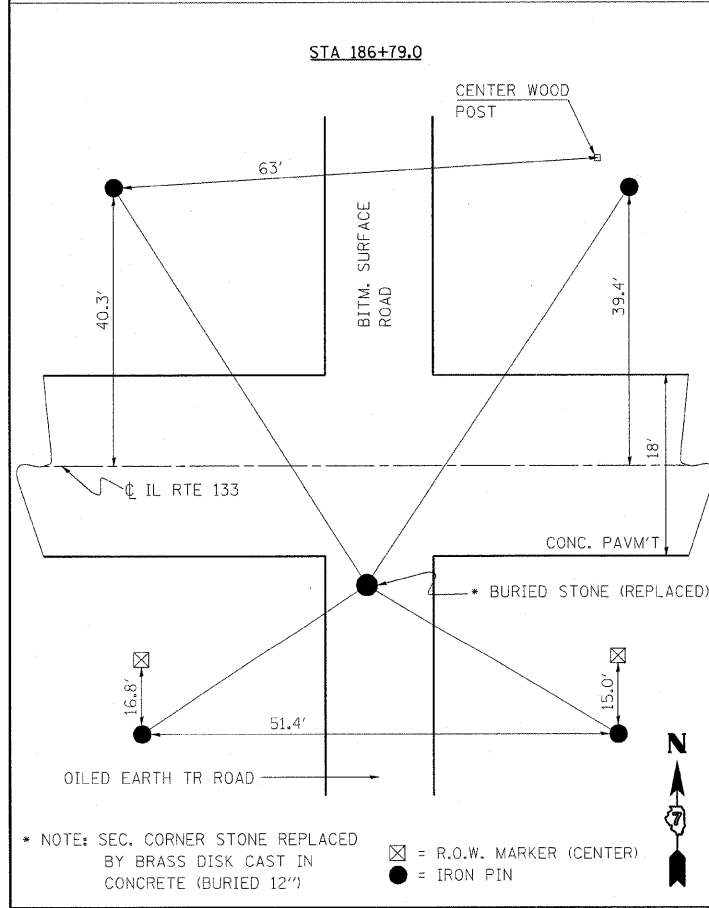
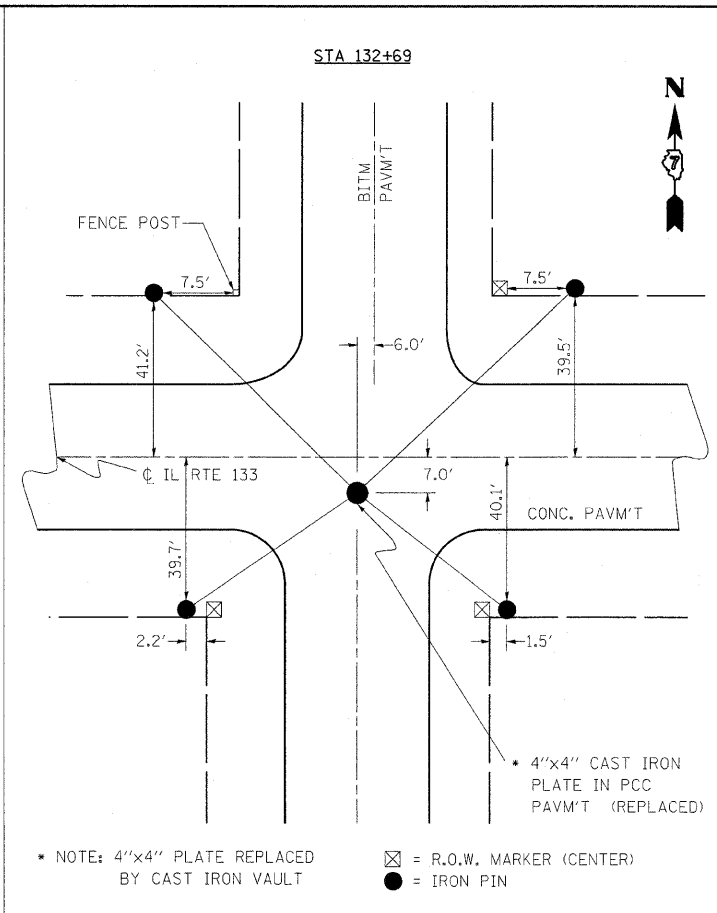
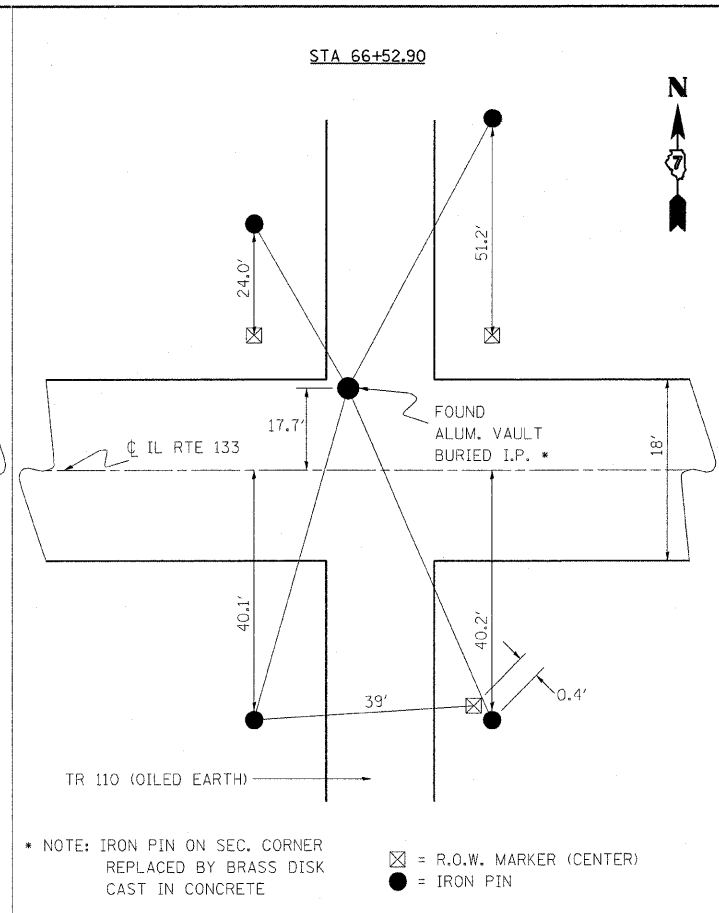
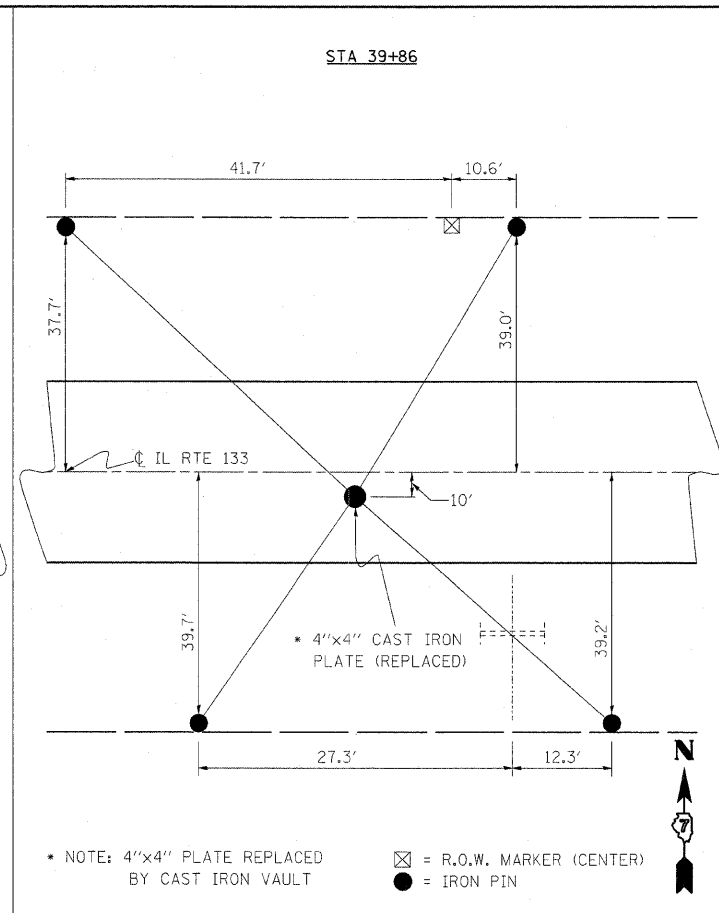
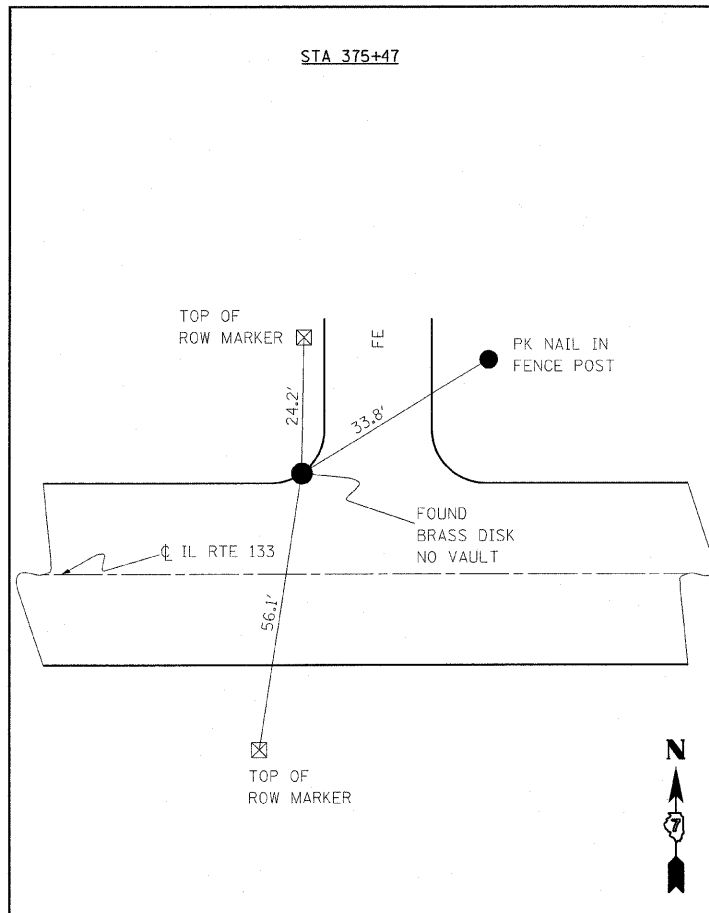
**PROPOSED TYPICAL SECTION**

FM STA. 0+13.20 TO STA. 2+90.00

PAVING OMISSION  
 FM STA. 258+28.00 TO 259+22.00  
 FM STA. 424+39.81 TO 424+42+79  
 FM STA. 452+09.92 TO 0+13.20



FILE NAME =	USER NAME = teasleyck	DESIGNED -	REVISED -	<b>STATE OF ILLINOIS DEPARTMENT OF TRANSPORTATION</b>	<b>PROPOSED TYPICAL SECTIONS</b>			F.A.P. RTE.	SECTION	COUNTY	TOTAL SHEETS	SHEET NO.
c:\pwwork\pwwid\teasleyck\d0121195\d7	4381-sht-typical.dgn	DRAWN -	REVISED -					749	119RS-2	MOULTRIE	26	6
PLOT SCALE = 50.0000' / IN.	CHECKED -	REVISED -	REVISED -		CONTRACT NO. 74381			ILLINOIS FED. AID PROJECT				
PLOT DATE = 4/18/2009	DATE -	REVISED -	REVISED -		SCALE:	SHEET NO.	OF	SHEETS	STA.	TO STA.		



FILE NAME =  
c:\pwork\VPWID01\TEASLEYCK\0121195\07

USER NAME = teasleyck  
4381-sht-ATB.dgn  
PLOT SCALE = 50.0000' / IN.  
PLOT DATE = 4/19/2009

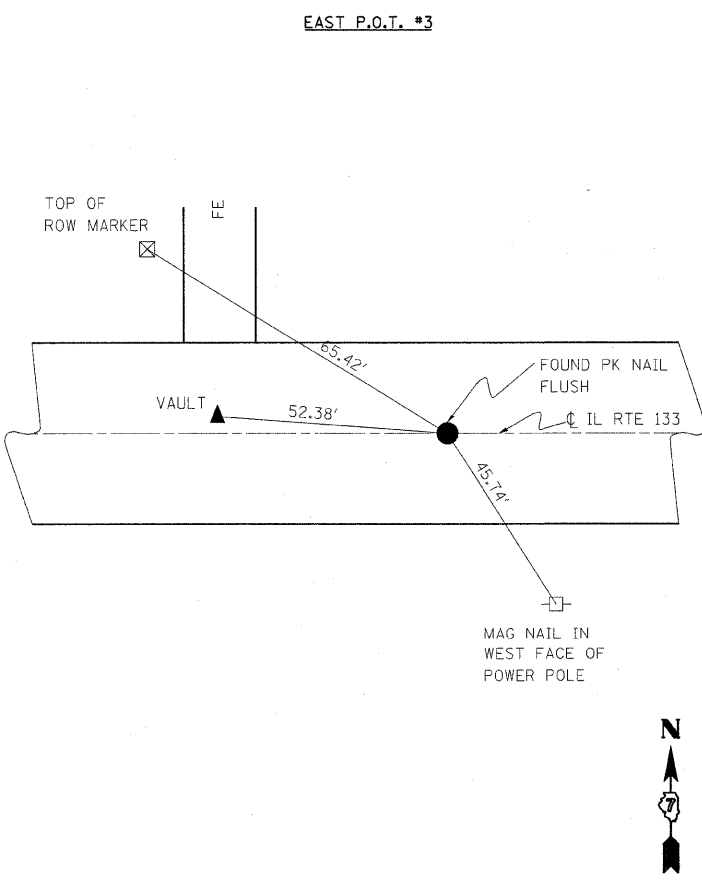
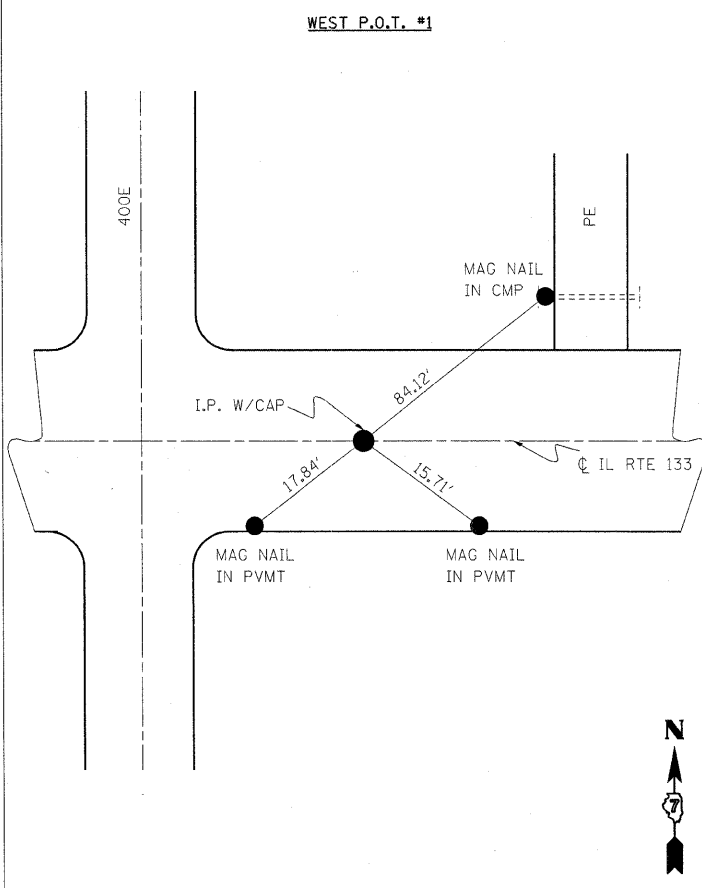
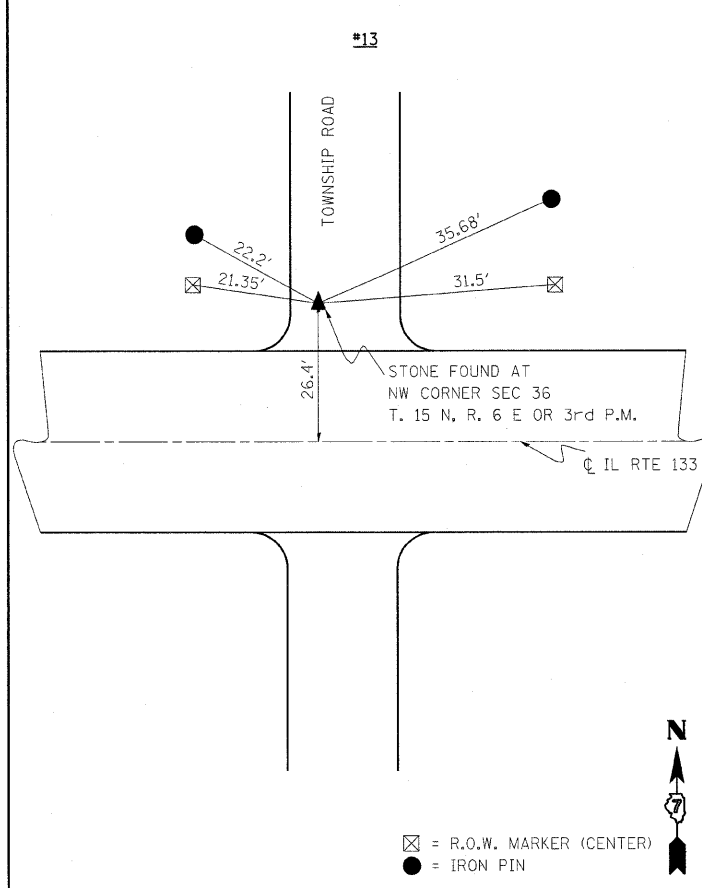
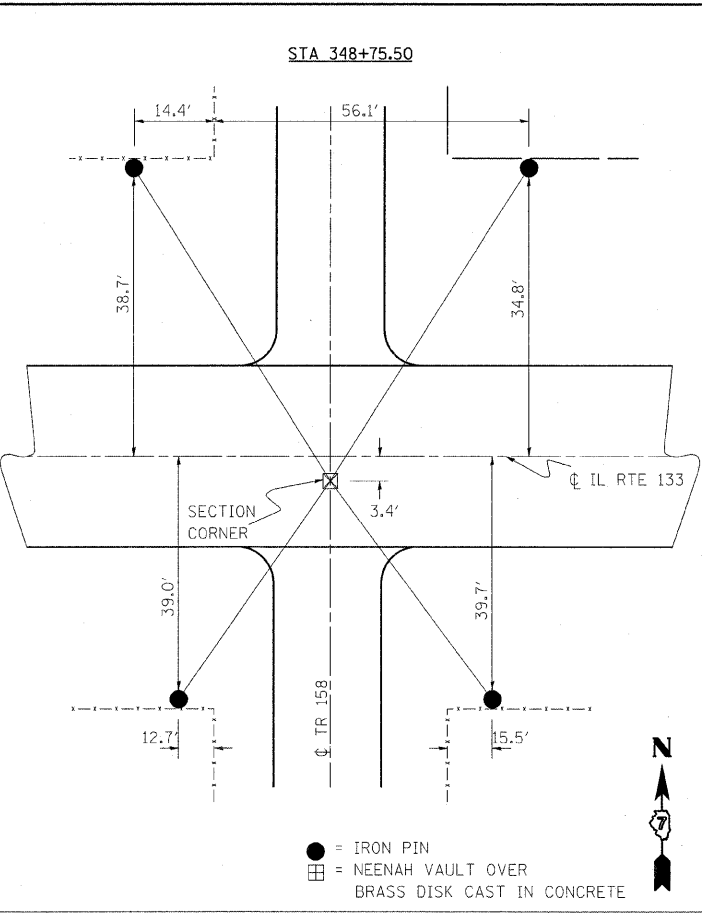
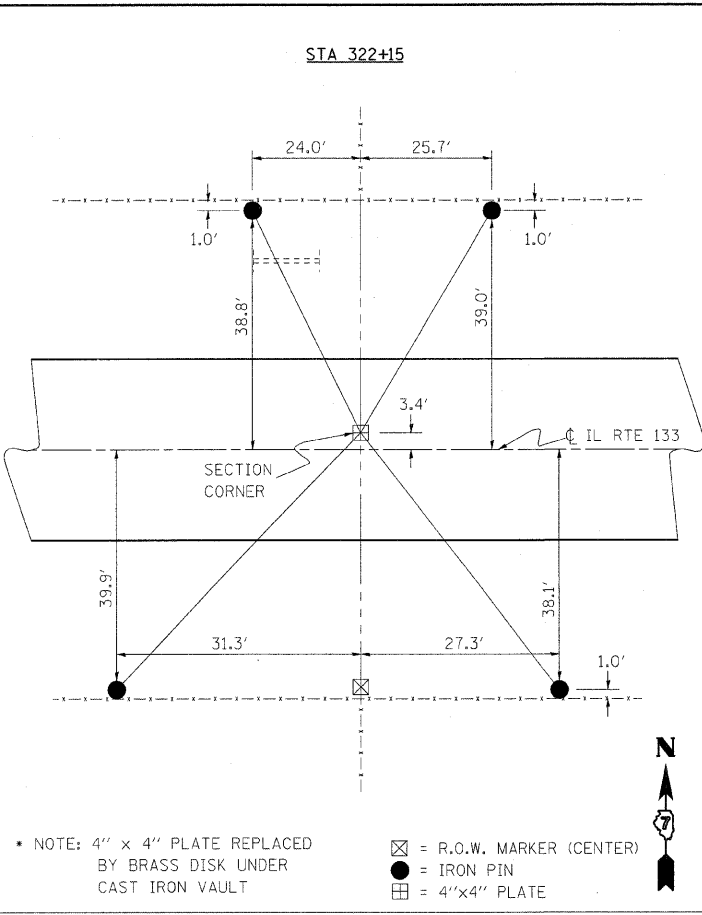
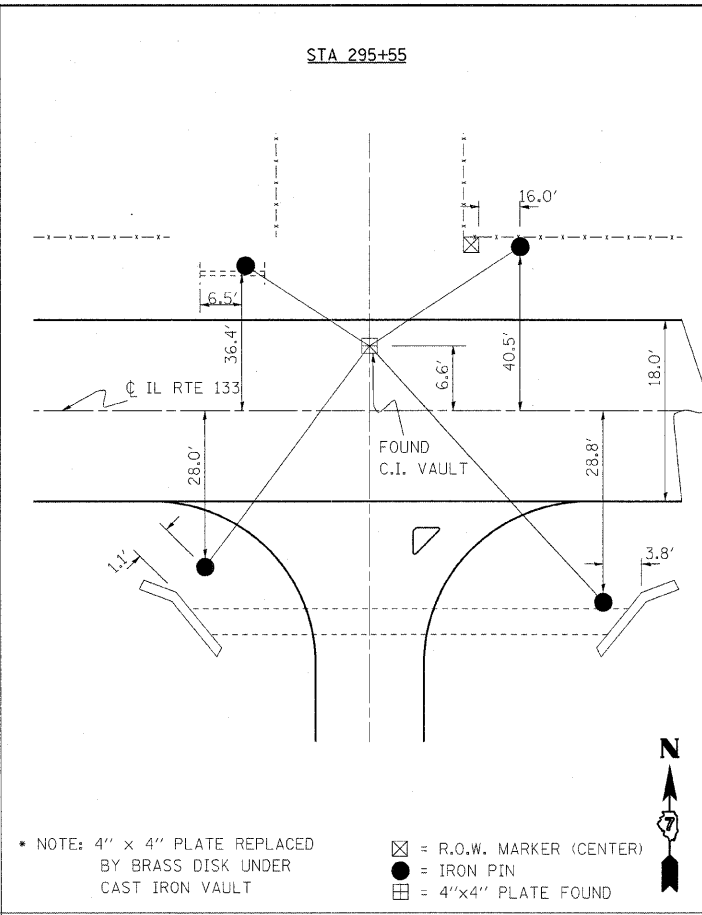
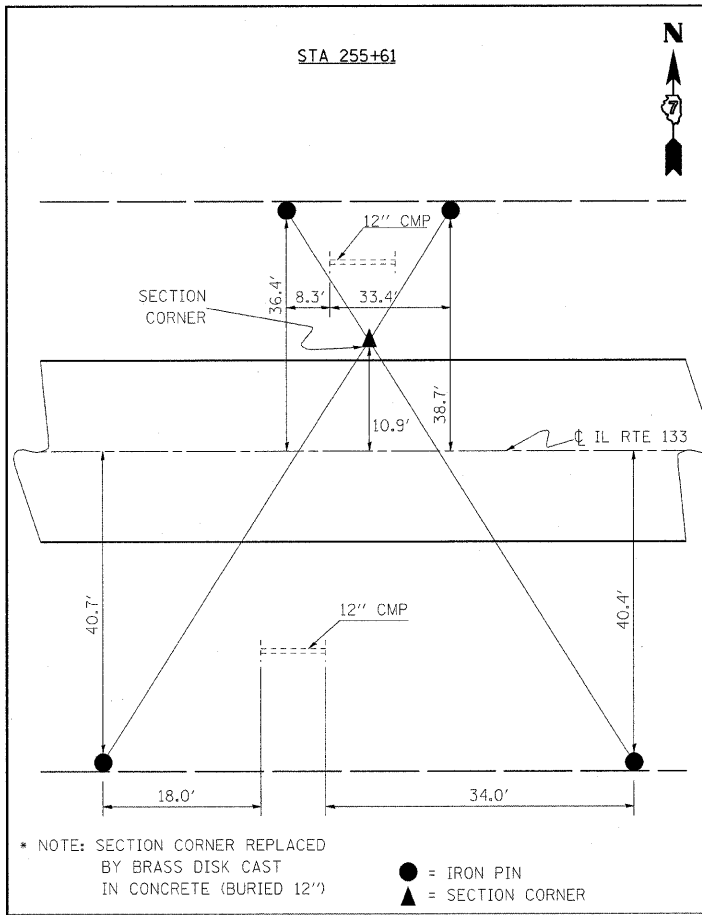
DESIGNED -  
DRAWN -  
CHECKED -  
DATE -

REVISED -  
REVISED -  
REVISED -  
REVISED -

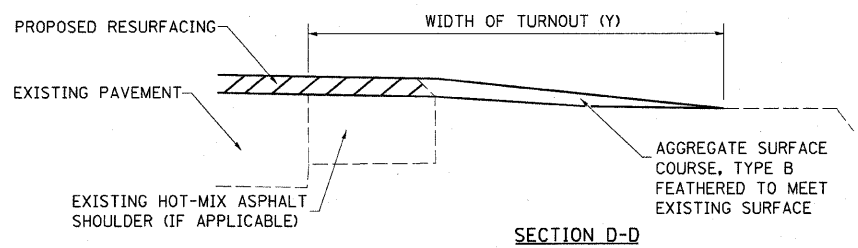
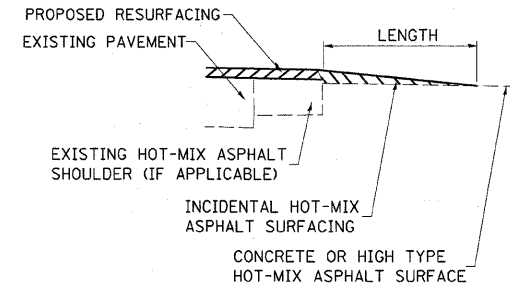
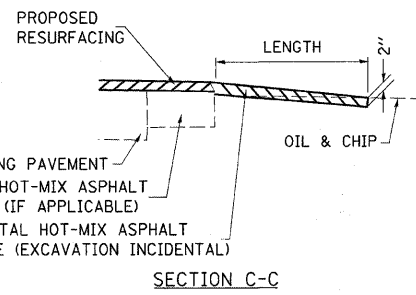
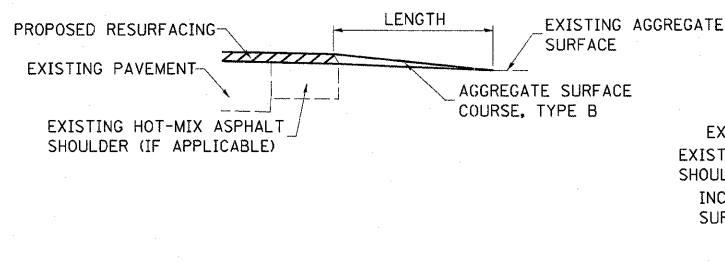
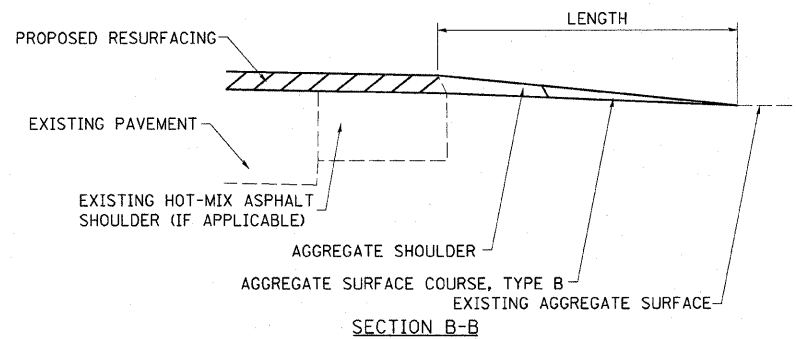
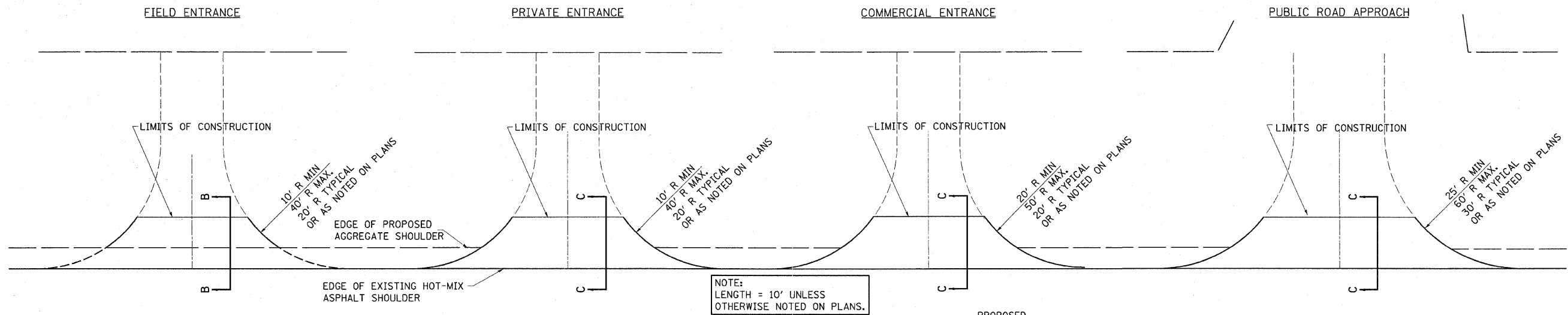
STATE OF ILLINOIS  
DEPARTMENT OF TRANSPORTATION

TIES  
SCALE: NA SHEET NO. 1 OF 2 SHEETS STA. TO STA.

F.A.P. RTE.	SECTION	COUNTY	TOTAL SHEETS	SHEET NO.
749	119 RS-2	Moultrie	26	7
CONTRACT NO. 74381				
ILLINOIS FED. AID PROJECT				







**TYPICAL SECTION AT MAILBOX TURNOUT**  
NOTE: SEE STANDARD 406201 FOR MAILBOX TURNOUT DETAILS

**NOTES**

THE COST OF THE ASPHALT MATERIALS, AND AGGREGATE (PRIME COAT) FOR ENTRANCES AND PUBLIC ROADS AND APPROACHES SHALL BE INCLUDED IN THE PAY ITEM INCIDENTAL HOT-MIX ASPHALT SURFACING.

THE COST OF EXCAVATION IS INCLUDED IN THE PAY ITEM INCIDENTAL HOT-MIX ASPHALT SURFACING.

IF THERE IS NOT EXISTING HOT-MIX ASPHALT SHOULDER THEN THE ENTRANCE TAPER STARTS AT THE EDGE OF EXISTING PAVEMENT.

THE COST OF THE BITUMINOUS MATERIALS AND AGGREGATE (PRIME COAT) FOR ENTRANCES AND PUBLIC ROAD APPROACHES SHALL BE INCLUDED IN THE PAY ITEM INCIDENTAL HOT-MIX ASPHALT SURFACING.

SIDE	STATION	TYPE	INCIDENTAL HOT-MIX ASPHALT SURFACING		SIDE	STATION	TYPE	INCIDENTAL HOT-MIX ASPHALT SURFACING		SIDE	STATION	TYPE	INCIDENTAL HOT-MIX ASPHALT SURFACING		SIDE	STATION	TYPE	INCIDENTAL HOT-MIX ASPHALT SURFACING	
			TON	TON				TON	TON				TON	TON				TON	TON
LT	0+65	CE	0.8		RT	40+09	FE		1.4	LT	142+95	FE		1.6	LT	217+29	PE	0.6	
LT	1+50	CE	1		RT	53+29	FE		1.4	LT	152+10	FE		1.5	LT	224+94	PE		1.9
LT	2+11	PE		1.5	LT	53+34	FE		1.4	RT	152+24	PE		1.5	RT	236+77	FE		1.4
LT	4+43	PRA	1		LT	55+53	PRA	0.8		LT	154+51	FE		1.2	LT	236+77	FE		1.4
LT	6+47	PE		1.3	RT	55+53	PRA	0.9		LT	157+20	FE		1.4	RT	238+62	FE		1.1
LT	7+30	PE	0.3		LT	74+96	FE		1.4	RT	161+86	FE		1.4	RT	242+26	PRA	0.7	
LT	8+51	PRA	1		RT	79+90	FE		1.4	LT	162+01	FE	0.4		LT	242+29.5	PRA	0.7	
RT	8+51	FE		1.4	LT	86+35.5	PRA	0.8		RT	162+17	FE		1.4	LT	244+80	PE	0.4	
LT	9+30	PE	0.3		RT	100+10	FE		1.4	LT	162+17	PE	0.3		RT	255+53	FE		1.4
LT	10+39	PE	0.4		LT	102+35	PE		1.6	LT	168+91	PE	0.4		RT	255+70	FE		1.4
LT	11+69	PE		2.8	RT	104+00	PE		1.6	RT	175+47	FE		1.4	RT	262+22.5	FE		1.4
LT	12+44	PE		1.1	LT	106+04	FE		1.4	RT	188+80.5	PRA	0.8		LT	263+02	CE		4.2
LT	12+79	PE	0.4		RT	112+38	FE		1.4	LT	188+80.5	PRA	0.9		LT	265+71	PE	0.9	
RT	12+79	FE		1.2	RT	114+14	PE	0.3		LT	195+67	FE		1.4	LT	268+99	FE		1.4
RT	13+41	FE		1.4	RT	114+71	PE	0.3		LT	201+92	FE		1.5	RT	274+34	FE		1.4
LT	13+85	PE		1.6	LT	117+29	FE		1.4	LT	203+51	PE		1.5	RT	281+03	PE		1.2
LT	15+75	PE	0.5		RT	119+37	FE		1.4	LT	205+43	PE	0.4		LT	282+50	FE		1.4
LT	25+81	PRA	0.9		RT	120+10	FE		1.4	RT	213+59	FE		1.4	LT	288+84	FE		1.4
RT	27+95	PE		0.8	RT	132+67.5	PRA	0.7		LT	215+34	PE		1.5	RT	295+54	PRA	0.8	
RT	29+00	PE		1.0	LT	132+75	PRA	0.8		RT	215+75	FE		1.4	RT	295+60	PRA	1.9	
RT	31+53	FE		1.3	LT	134+91	FE		1.4	RT	217+18	FE		1.4	LT	307+42	PE	0.5	

FE=FIELD ENTRANCE PRA - PUBLIC ROAD APPROACH  
PE=PRIVATE ENTRANCE MBT - MAILBOX TURNOUT  
CE=COMMERCIAL ENTRANCE



PAVING SCHEDULE

STATION (IL 133)	TO	STATION	LENGTH FEET	WIDTH FEET	AREA SQ YD	BITUMINOUS MATERIALS (PRIME COAT)	AGGREGATE (PRIME COAT)	HOT MIX ASPHALT SURFACE COURSE, MIX "C", N90	LEVELING BINDER (MACHINE METHOD)	HOT-MIX ASPHALT SHOULDERS	HOT-MIX ASPHALT SHOULDERS, SPECIAL	HOT MIX ASPHALT SURFACE REMOVAL (BUTT JOINT)	TEMPORARY RAMP	HOT MIX ASPHALT SURFACE REMOVAL (VARIABLE DEPTH)	HOT MIX ASPHALT SURFACE REMOVAL, 2 1/4"	INCIDENTAL HOT MIX ASPHALT SURFACE	AGGREGATE SURFACE COURSE, TYPE B	AGGREGATE SHOULDERS, TYPE B		
						GALLON	TON	TON	TON	SQ YD	TON	SQ YD	SQ YD	TON	TON	TON	TON	TON	TON	TON
0+08.00	TO	25+81.00	2,573.0	26.0	7,433.1	1,143.6	22.9	624.4	312.2	392.2		2,050.9	71.9	7,433.1		6.6	12.3	69.4		
25+81.00	TO	66+53.00	4,072.0	26.0	11,763.6	1,809.8	36.2	988.1	494.1	620.8				11,763.6		1.7	7.3	109.8		
66+53.00	TO	130+75.00	6,422.0	26.0	18,552.4	2,854.2	57.1	1558.4	779.2	979.0				18,552.4		1.4	14.4	173.1		
130+75.00	TO	138+57.00	782.0	26.0	2,259.1	347.6	7.0	189.8	94.9	119.2				2,259.1		1.5	1.4	21.1		
138+57.00	TO	188+80.50	5,023.5	26.0	14,512.3	2,232.7	44.7	1219.0	609.5	765.8				14,512.3		2.8	11.4	135.4		
188+80.50	TO	240+26.00	5,145.5	26.0	14,864.8	2,286.9	45.7	1248.6	624.3	784.4				14,864.8		1.0	15.9	138.7		
240+26.00	TO	258+28.00	1,802.0	26.0	5,205.8	800.9	16.0	437.3	218.6	274.7		155.6	31.1	5,205.8		1.8	2.8	48.6		
258+28.00	TO	259+22.00	94.0																	
259+22.00	TO	294+18.60	3,496.6	26.0	10,101.3	1,554.0	31.1	848.5	424.3	533.0		155.6	31.1	10,101.3		0.9	12.4	94.2		
294+18.60	TO	294+63.60	45.0	26.0	130.0	20.0	0.4	10.9	5.5	7.8				130.0				1.2		
294+63.60	TO	296+56.10	192.5	26.0	556.1	85.6	1.7	46.7	23.4		37.7				855.6			5.2		
296+56.10	TO	297+01.10	45.0	26.0	130.0	20.0	0.4	10.9	5.5		7.8			130.0		2.7		1.2		
297+01.10	TO	348+72.00	5,170.9	26.0	14,938.2	2,298.2	46.0	1254.8	627.4		788.3			14,938.2		2.9	9.7	139.4		
348+72.00	TO	402+10.00	5,338.0	26.0	15,420.9	2,372.4	47.4	1295.4	647.7		813.7			15,420.9		2.5	18.9	143.9		
402+10.00	TO	420+99.00	1,889.0	26.0	5,457.1	839.6	16.8	458.4	229.2		288.0			5,457.1		3.2	7.7	50.9		
420+99.00	TO	421+44.00	45.0	26.0	130.0	20.0	0.4	10.9	5.5		7.8			130.0				1.2		
421+44.00	TO	422+80.00	136.0	26.0	392.9	60.4	1.2	33.0	16.5		26.7				604.4	2.3		3.7		
422+80.00	TO	423+25.00	45.0	26.0	130.0	20.0	0.4	10.9	5.5		7.8			130.0				1.2		
423+25.00	TO	424+35.05	110.1	26.0	317.9	48.9	1.0	26.7	13.4		16.8	155.6	22.2	317.9				3.0		
424+35.05	TO	424+48.37	13.3																	
424+48.37	TO	442+17.00	1,768.6	26.0	5,109.4	786.1	15.7	429.2	214.6		269.6	155.6	22.2	5,109.4		3.1	2.1	47.7		
442+17.00	TO	452+90.92	1,073.9	26.0	3,102.4	477.3	9.5	260.6	130.3		163.7	155.6	33.3	3,102.4		2.1	1.4	28.9		
452+90.92	TO	453+12.00	21.1																	
453+12.00	=	-0+08.00																		
-0+08.00	TO	0+13.90	21.2										33.3							
0+13.90	TO	2+90.00	276.1	26.0	797.6	122.7	2.5	67.0	33.5		54.1		33.3					7.4		
INTERSECTION OF IL 133/ VINE ST. IN ARTHUR						200.3	4.0	168.3	84.1				66.6		2,003.0					
PROJECT TOTALS						45,601	131,305	20,401	408	11,198	5,599	4,477	2,482	2,829	345	129,558	3,463	37	118	1,193
DEDUCTION FOR ENTRANCES							31.8													

FILE NAME = c:\pwork\PIW001\TEASLEYCK\20121195\07

USER NAME = teasleyck  
 4381-sht-schedule.dgn  
 PLOT SCALE = 50,0000' / IN.  
 PLOT DATE = 4/10/2009

DESIGNED -  
 DRAWN -  
 CHECKED -  
 DATE -

REVISED -  
 REVISED -  
 REVISED -  
 REVISED -

STATE OF ILLINOIS  
 DEPARTMENT OF TRANSPORTATION

PAVING SCHEDULE

SCALE: SHEET NO. 1 OF 2 SHEETS STA. TO STA.

F.A.P. RTE.	SECTION	COUNTY	TOTAL SHEETS	SHEET NO.
749	119 RS-2	Moultrie	26	11
CONTRACT NO. 74381			ILLINOIS FED. AID PROJECT	

PAVEMENT MARKING SCHEDULE

STATION		STATION	FEET	FT.	SQ. FT.	FT.	FT.	SQ. FT.	FT.	FT.	EACH
0+08.00	TO	25+81.00	2573.0	1,029.2	273.0	5,618.3	5,618.3		0.0	20.0	32.2
25+81.00	TO	66+53.00	4072.0	1,628.8	135.7	9,060.0	9,060.0		0.0		50.9
66+53.00	TO	130+75.00	6422.0	2,568.8	214.1	14,401.5	14,401.5		0.0		80.3
130+75.00	TO	138+57.00	782.0	312.8	26.1	1,664.5	1,664.5		0.0		9.8
138+57.00	TO	188+80.50	5023.5	2,009.4	167.5	11,206.9	11,206.9		0.0		62.8
188+80.50	TO	240+26.00	5145.5	2,058.2	171.5	11,577.4	11,577.4		0.0		64.3
240+26.00	TO	258+28.00	1802.0	720.8	60.1	3,968.5	3,968.5		0.0		22.5
258+28.00	TO	259+22.00	94.0	0.0	0.0	0.0	0.0		0.0		0.0
259+22.00	TO	294+18.60	3496.6	1,398.6	116.6	7,867.4	7,867.4		0.0		43.7
294+18.60	TO	294+63.60	45.0	18.0	1.5	51.3	51.3		0.0		64.6
294+63.60	TO	296+56.10	192.5	77.0	6.4	261.1	261.1		0.0		66.7
296+56.10	TO	297+01.10	45.0	18.0	1.5	101.3	101.3		0.0		23.6
297+01.10	TO	348+72.00	5170.9	2,068.4	172.4	11,591.5	11,591.5		0.0		0.6
348+72.00	TO	402+10.00	5338.0	2,135.2	177.9	11,927.5	11,927.5		0.0		1.7
402+10.00	TO	420+99.00	1889.0	755.6	63.0	4,285.0	4,204.0		682.0		0.6
420+99.00	TO	421+44.00	45.0	18.0	1.5	146.3	0.0		146.3		0.0
421+44.00	TO	422+80.00	136.0	54.4	4.5	304.0	0.0		304.0		0.0
422+80.00	TO	423+25.00	45.0	18.0	1.5	146.3	0.0		146.3		0.0
423+25.00	TO	424+35.05	110.1	44.0	3.7	366.6	0.0	115.2	366.6	39.0	13.4
424+35.05	TO	424+48.37	13.3	5.3	0.0	0.0	0.0		0.0		0.0
424+48.37	TO	442+17.00	1768.6	707.5	59.0	4,238.0	0.0	115.2	4,238.0	39.0	0.0
442+17.00	TO	452+90.92	1073.9	429.6	35.8	2,416.3	0.0		2,416.3		0.0
452+90.92	TO	453+12.00	21.1	0.0	0.0	0.0	0.0		0.0		0.0
453+12.00	=	-0+08.00	0.0	0.0	0.0	0.0	0.0		0.0		0.0
-0+08.00	TO	0+13.90	21.2	0.0	0.0	0.0	0.0		0.0		0.0
0+13.90	TO	2+90.00	276.1	110.4	9.2	621.2	0.0		621.2		0.0
INTERSECTION OF IL 133/VINE ST. IN ARTHUR										65.0	
PROJECT TOTALS			45,601	18,186	1,703	101,821	93,501	230	8,931	163	538

PERMANENT SURVEY MARKERS  
TO BE ADJUSTED

Location	Offset	Description	No. (Each)
39+86.00	1.0' RT.	9"X9" C. I. Survey Vault	1
66+53.00	17.9' LT.	Circular Alum. Vault	1
132+69.00	7.0' RT.	9"X9" C. I. Survey Vault	1
188+78.00	14.0' RT.	Circular Alum. Vault	1
215+54.00	0.0' RT.	9"X9" C. I. Survey Vault	1
242+30.00	12.9' LT.	Circular Alum. Vault	1
255+62.00	11.3' LT.	Circular Alum. Vault	1
268+92.00	9.6' LT.	Circular Alum. Vault	1
295+55.00	6.6' LT.	9"X9" C. I. Survey Vault	1
322+15.00	3.4' LT.	9"X9" C. I. Survey Vault	1
348+76.00	3.5' RT.	9"X9" C. I. Survey Vault	1
402+08.00	26.5' LT	Circular Alum. Vault	1

PROJECT TOTAL= 12.0

SURVEY MARKER VAULT

Location	No. (Each)	Offset	Description
375+42.00	1	15.9' LT.	Brass Disc buried +/- 6"

PROJECT TOTAL= 1

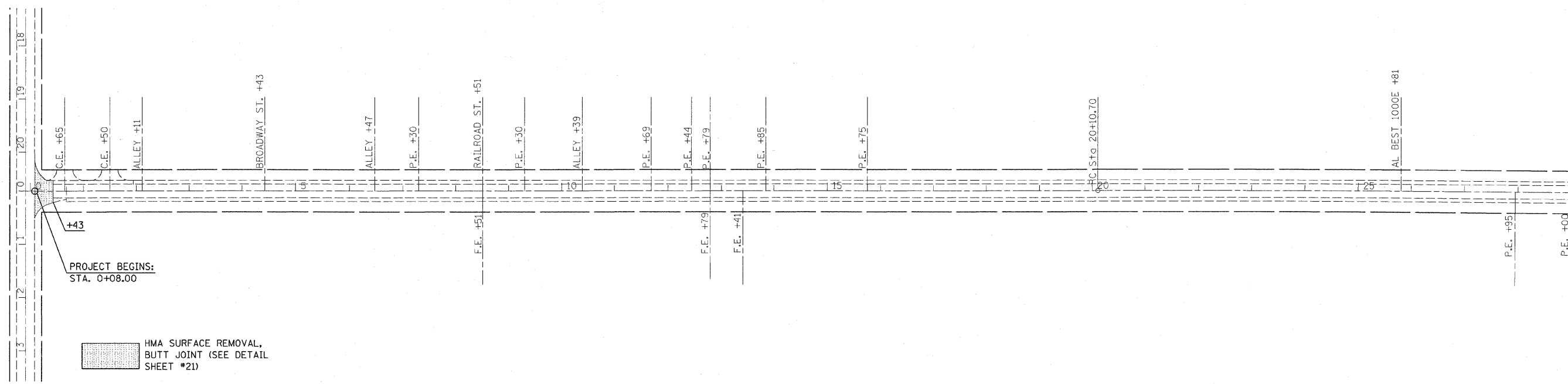
FURNISHING AND INSTALLING PROPERTY MARKERS

Location	No. (Each)	Offset	Description
161+92.00	1	10.6' RT.	P. K. NAIL
243+93.12	1	0.0'	I. P. w/ Yellow Cap
269+40.69	1	0.0'	I. P. w/ Yellow Cap

PROJECT TOTAL= 3

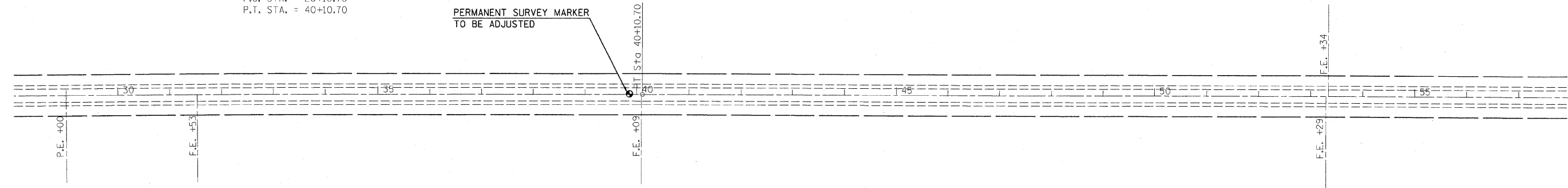
CLASS D PATCHES

Type 1	Type 2	Type 3	Type 4
(SQ YD)	(SQ YD)	(SQ YD)	(SQ YD)
0.0	3318.0	580.0	1010.0

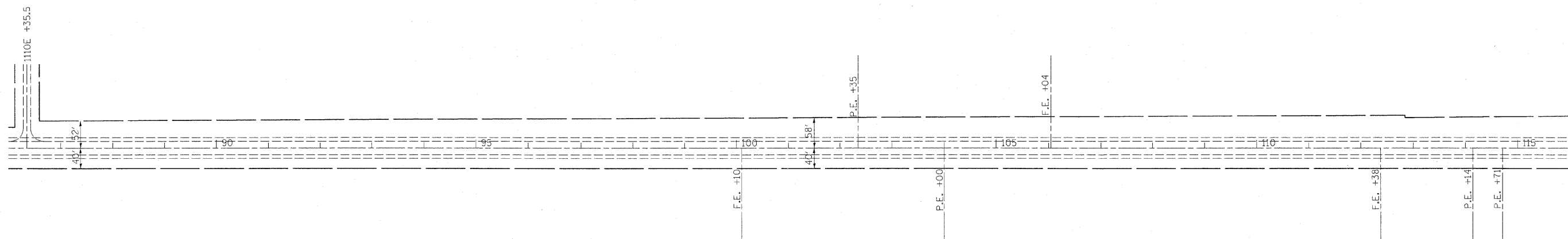
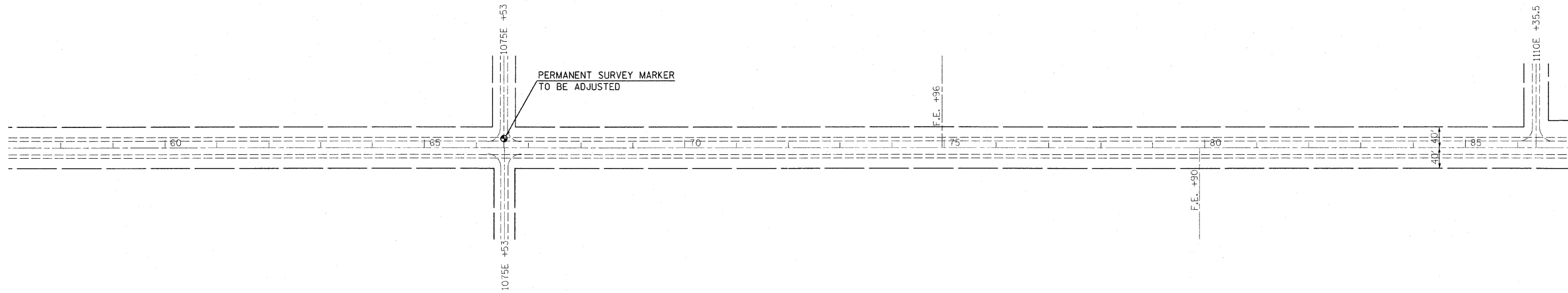


EXIST. CURVE CUR1  
 PI STA. = 30+10.74  
 $\Delta = 1^\circ 10' 59''$  (RT)  
 $D = 0^\circ 03' 33''$   
 $R = 96,853.70'$   
 $T = 1,000.04'$   
 $L = 2,000.00'$   
 $E = 5.16'$   
 $\theta =$  -----  
 $T.R. =$  -----  
 $S.E. RUN =$  -----  
 P.C. STA. = 20+10.70  
 P.T. STA. = 40+10.70

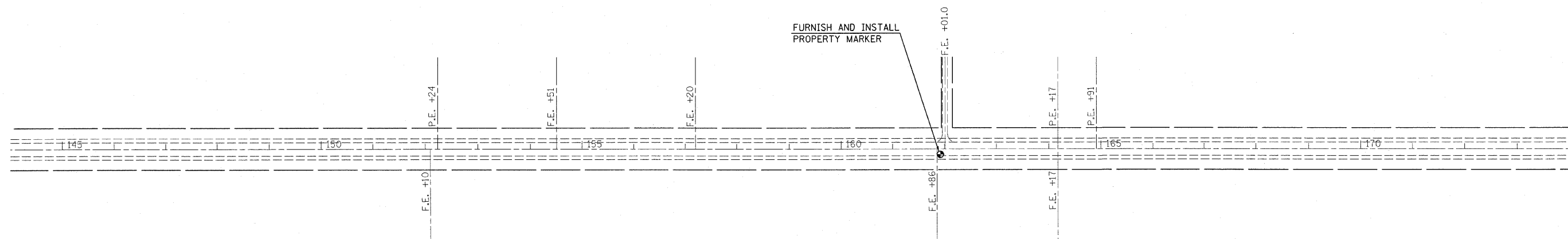
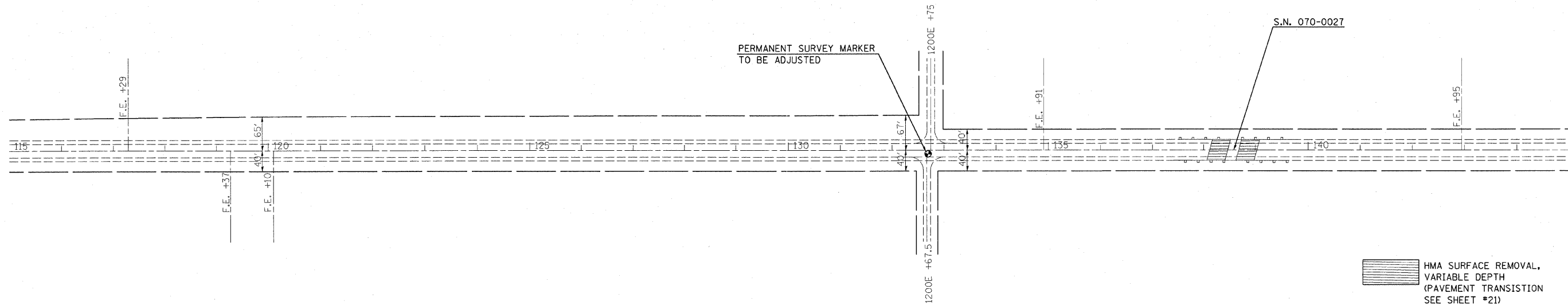
PERMANENT SURVEY MARKER  
 TO BE ADJUSTED



FILE NAME =	USER NAME = teasleyck	DESIGNED -	REVISED -	<b>STATE OF ILLINOIS DEPARTMENT OF TRANSPORTATION</b>	<b>IL 133 PLAN</b>	F.A.P. RTE.	SECTION	COUNTY	TOTAL SHEETS	SHEET NO.
c:\pwwork\pwwork\TEASLEYCK\d0121195\d7	4381-SHT-PLAN.dgn	DRAWN -	REVISED -			749	119 RS-2	Moultrie	26	13
PLOT SCALE = 100.0000 // IN.		CHECKED -	REVISED -			CONTRACT NO. 74381				
PLOT DATE = 4/10/2009		DATE -	REVISED -			ILLINOIS FED. AID PROJECT				
				SCALE: 100		SHEET NO. 1 OF 8 SHEETS		STA. 0+00 TO STA. 58+00		



FILE NAME =	USER NAME = teasleyck	DESIGNED -	REVISED -	<b>STATE OF ILLINOIS DEPARTMENT OF TRANSPORTATION</b>	<b>IL 133 PLAN</b>			F.A.P. RTE.	SECTION	COUNTY	TOTAL SHEETS	SHEET NO.
c:\pwwork\pwwork\TEASLEYCK\20121195\d7	4381-SHT-PLAN.dgn	DRAWN -	REVISED -					749	119 RS-2	Moultrie	26	14
PLOT SCALE = 100.0000' / IN.	CHECKED -	REVISED -	REVISED -		CONTRACT NO. 74381			ILLINOIS FED. AID PROJECT				
PLOT DATE = 4/10/2009	DATE -	REVISED -	REVISED -		SCALE: 100	SHEET NO. 2 OF 8 SHEETS	STA. 58+00 TO STA. 116+00					



FILE NAME =  
c:\pwwork\pwwork\TEASLEY\0121195\07

USER NAME = teasleyck  
4381-SHT-PLAN.dgn  
PLOT SCALE = 1/8" = 100'-0" IN.  
PLOT DATE = 4/10/2009

DESIGNED -  
DRAWN -  
CHECKED -  
DATE -

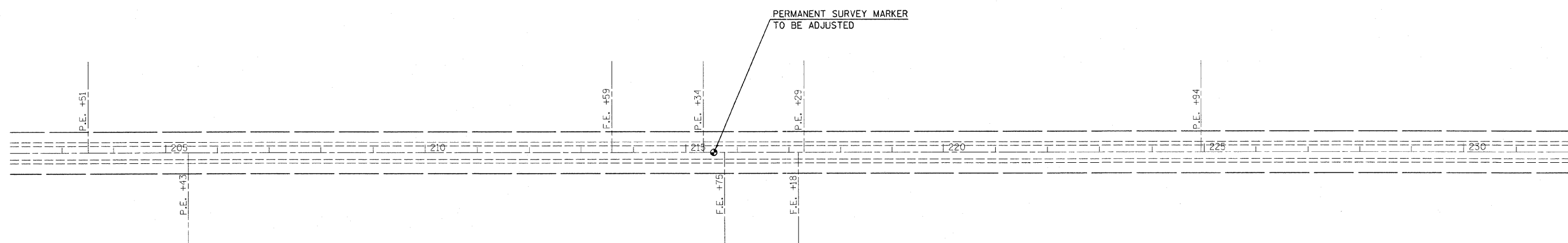
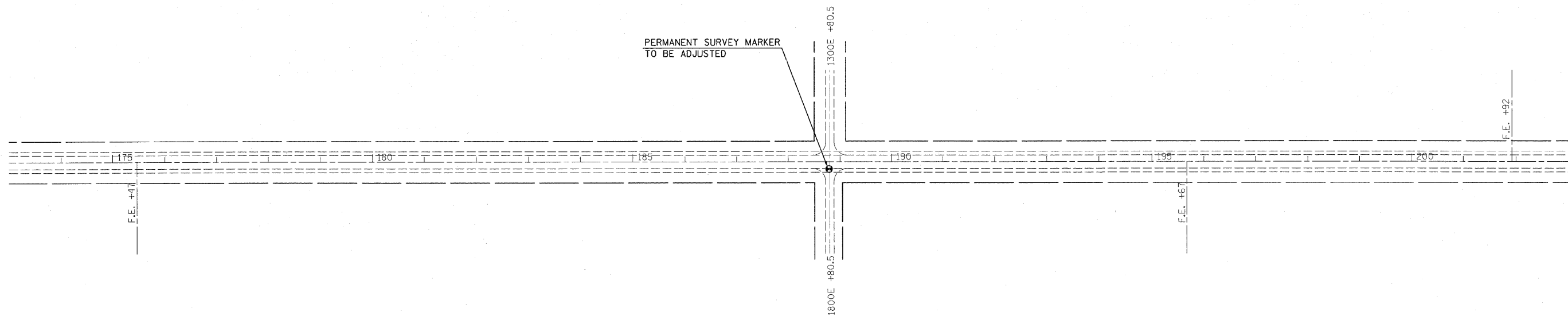
REVISED -  
REVISED -  
REVISED -  
REVISED -

**STATE OF ILLINOIS  
DEPARTMENT OF TRANSPORTATION**

**IL 133 PLAN**

SCALE: 100 SHEET NO. 3 OF 8 SHEETS STA. 116+00 TO STA. 174+00

F.A.P. RTE.	SECTION	COUNTY	TOTAL SHEETS	SHEET NO.
749	119 RS-2	Moultrie	26	15
CONTRACT NO. 74381			ILLINOIS FED. AID PROJECT	



FILE NAME =  
 c:\p\work\PW100T\TEASLEYCK\0121195\d7

USER NAME = teasleyck  
 74381-SHT-PLAN.dgn  
 PLOT SCALE = 1/80,0000 "/> IN.  
 PLOT DATE = 4/10/2009

DESIGNED -	REVISED -
DRAWN -	REVISED -
CHECKED -	REVISED -
DATE -	REVISED -

DESIGNED -	REVISED -
DRAWN -	REVISED -
CHECKED -	REVISED -
DATE -	REVISED -

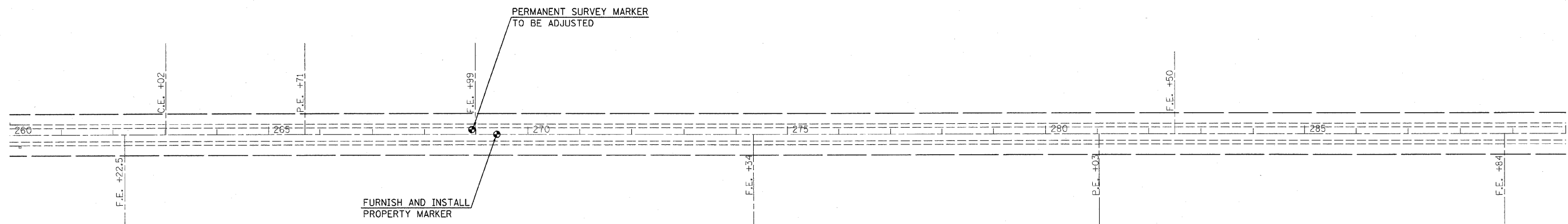
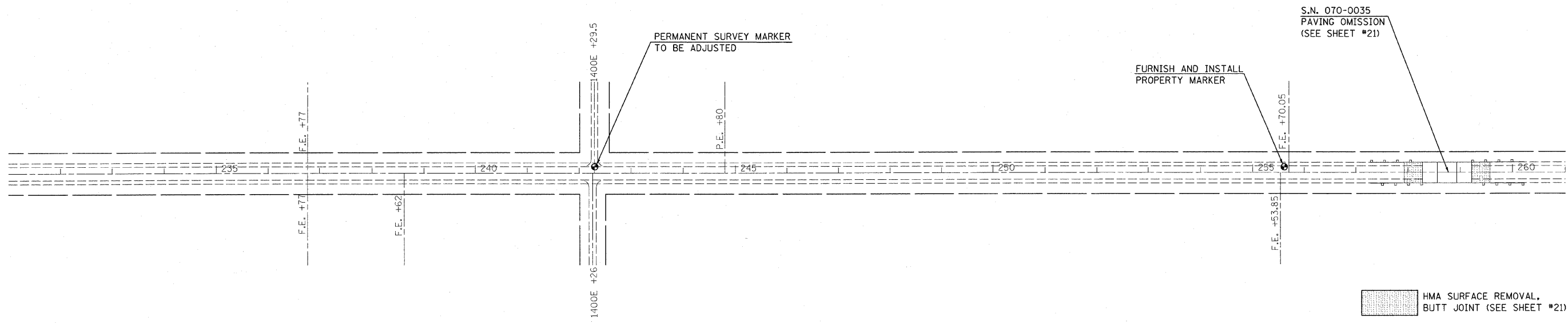
**STATE OF ILLINOIS  
 DEPARTMENT OF TRANSPORTATION**

**IL 133 PLAN**

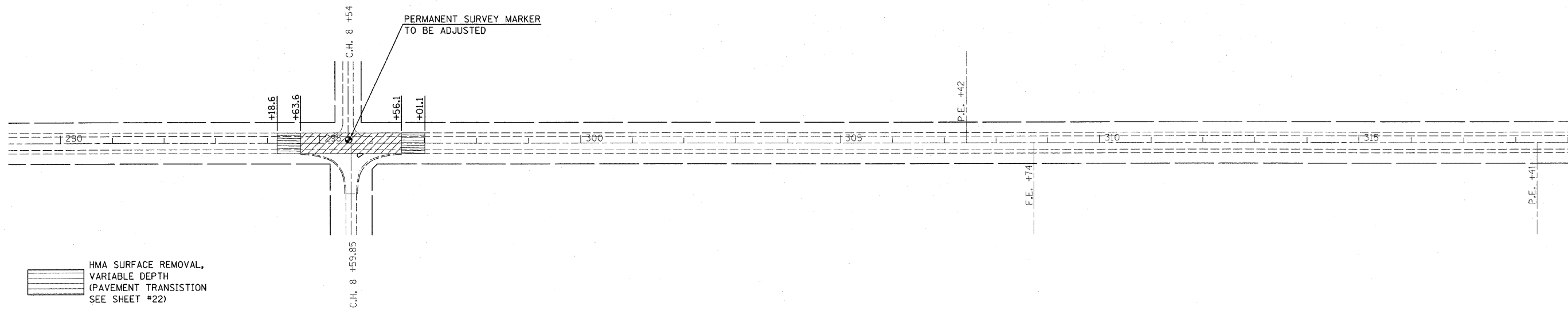
SCALE: 100 SHEET NO. 4 OF 8 SHEETS STA. 174+00 TO STA. 232+00

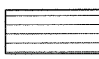

F.A.P. RTE.	SECTION	COUNTY	TOTAL SHEETS	SHEET NO.
749	119 RS-2	Moultrie	26	16
CONTRACT NO. 74381			ILLINOIS FED. AID PROJECT	

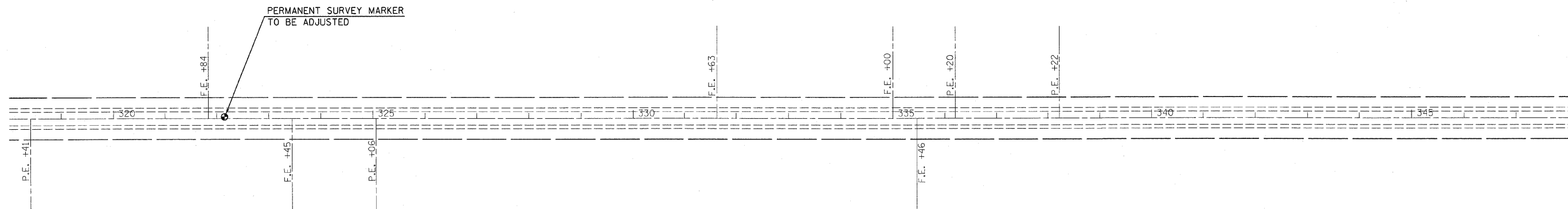




FILE NAME = e:\pwork\pwork\DOT\TEASLEYCK\08121195\47	USER NAME = teasleyck 4381-SHT-PLAN.dgn	DESIGNED - DRAWN -	REVISED - REVISED -	<b>STATE OF ILLINOIS DEPARTMENT OF TRANSPORTATION</b>	<b>IL 133 PLAN</b>			F.A.P. RTE. 749	SECTION 119 RS-2	COUNTY Moultrie	TOTAL SHEETS 26	SHEET NO. 17
	PLOT SCALE = 1/8" = 100'-0"	CHECKED -	REVISED -		SCALE: 100	SHEET NO. 5	OF 8 SHEETS	STA. 232+00	TO STA. 290+00	CONTRACT NO. 74381		
	PLOT DATE = 4/10/2009	DATE -	REVISED -		ILLINOIS FED. AID PROJECT							



 HMA SURFACE REMOVAL, VARIABLE DEPTH (PAVEMENT TRANSITION SEE SHEET #22)  
 HMA SURFACE REMOVAL, 2/4"



FILE NAME = c:\pwwork\pwidot\TEASLEYCK\d0121195\d7

USER NAME = teasleyck  
 4381-SHT-PLAN.dgn  
 PLOT SCALE = 100.0000' / IN.  
 PLOT DATE = 4/18/2009

DESIGNED -  
 DRAWN -  
 CHECKED -  
 DATE -

REVISED -  
 REVISED -  
 REVISED -  
 REVISED -

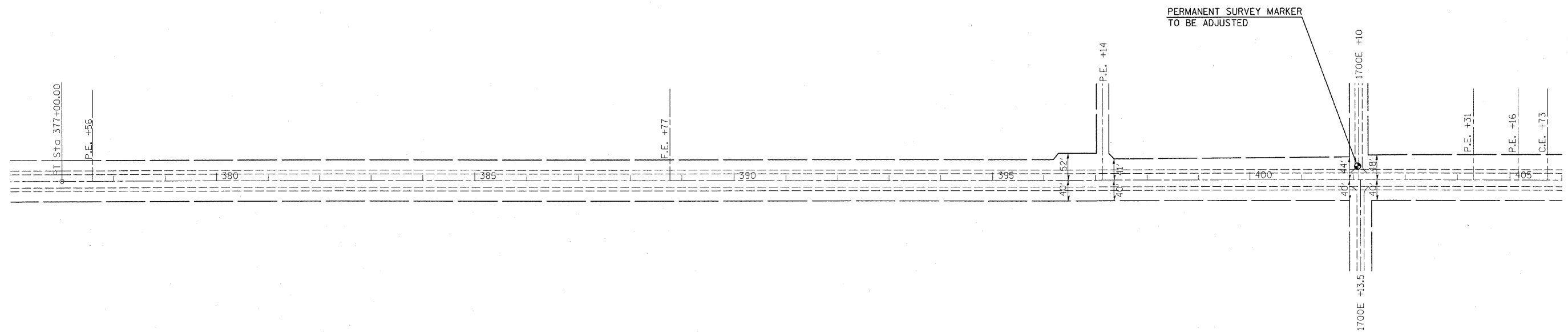
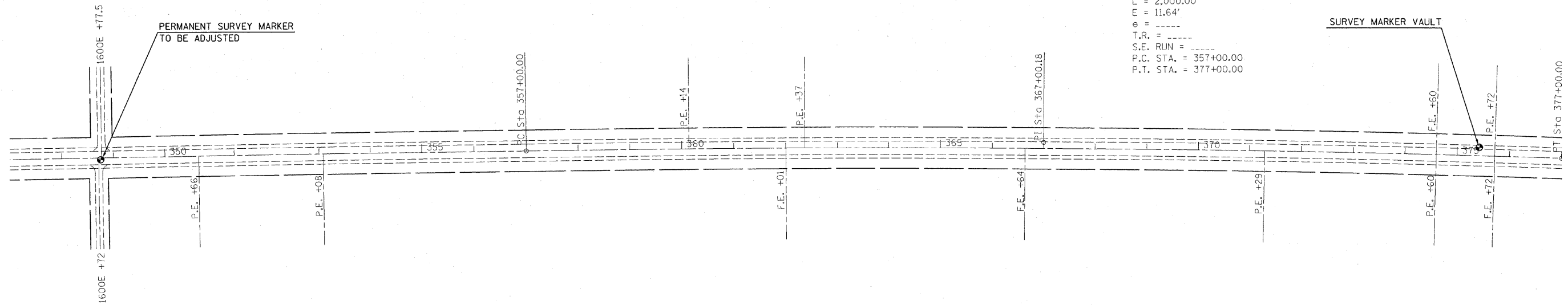
STATE OF ILLINOIS  
DEPARTMENT OF TRANSPORTATION

IL 133 PLAN

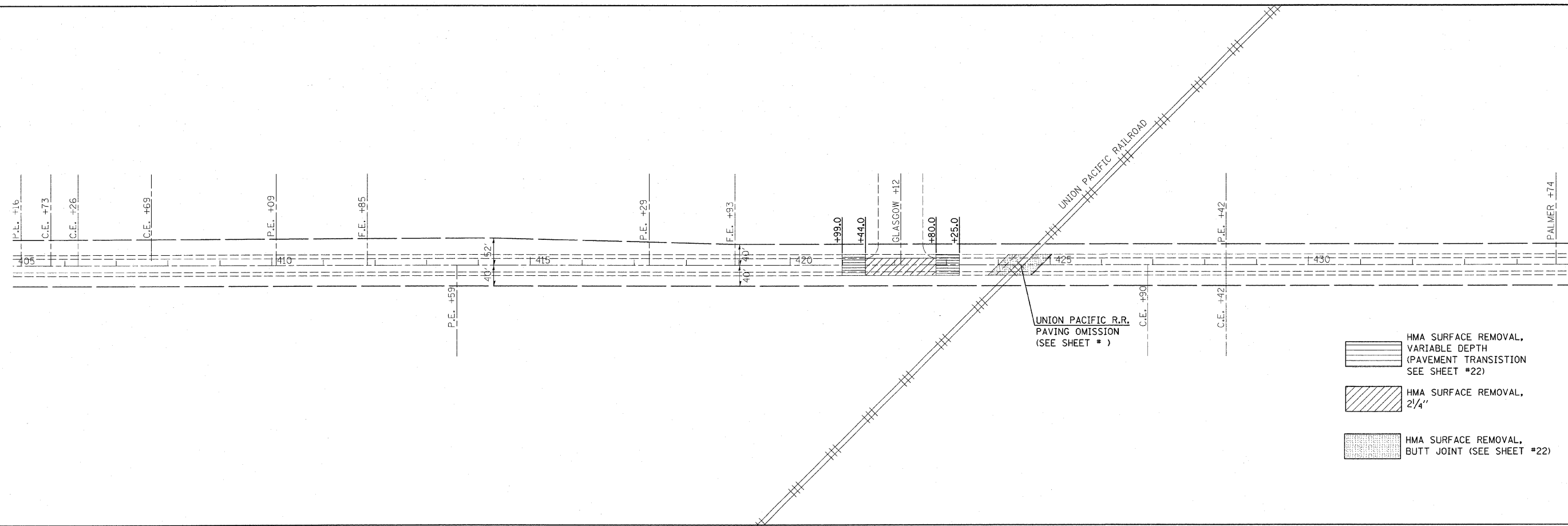
SCALE: 100 SHEET NO. 6 OF 8 SHEETS STA. 290+00 TO STA. 348+00

F.A.P. RTE.	SECTION	COUNTY	TOTAL SHEETS	SHEET NO.
749	119 RS-2	Moultrie	26	18
CONTRACT NO. 74381			ILLINOIS FED. AID PROJECT	

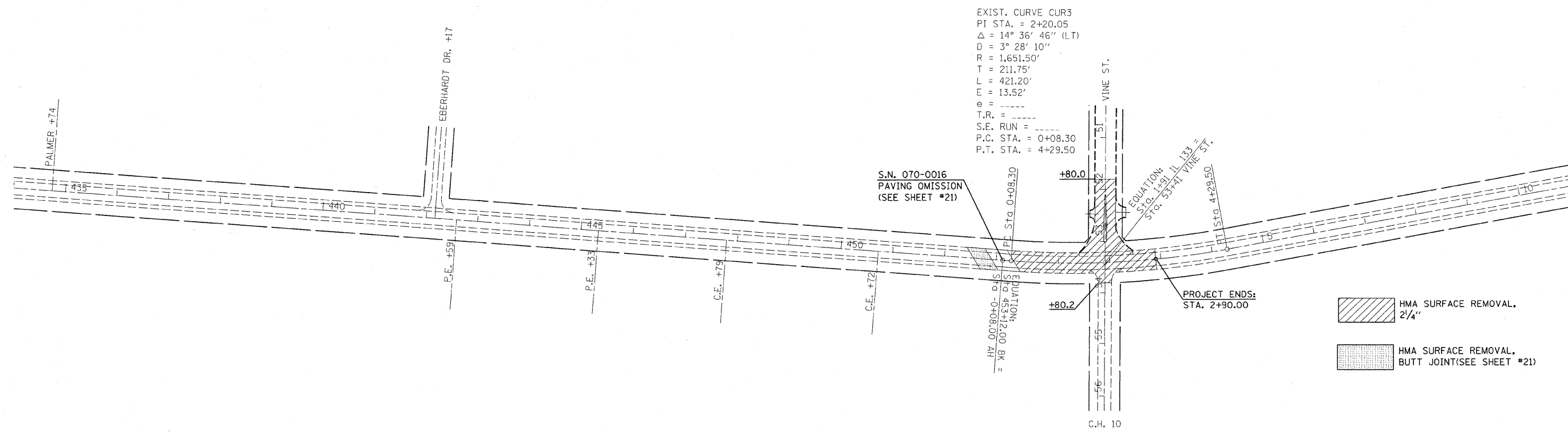
EXIST. CURVE CUR2  
 PI STA. = 367+00.18  
 $\Delta = 2^\circ 40' 00''$  (RT)  
 D =  $0^\circ 08' 00''$   
 R = 42,971.30'  
 T = 1,000.18'  
 L = 2,000.00'  
 E = 11.64'  
 e = -----  
 T.R. = -----  
 S.E. RUN = -----  
 P.C. STA. = 357+00.00  
 P.T. STA. = 377+00.00



FILE NAME = c:\pwork\pwork\DOT\TEASLEYCK\0121195\07	USER NAME = teasleyck 4381-SHT-PLAN.dgn	DESIGNED - DRAWN -	REVISED - REVISED -	<b>STATE OF ILLINOIS DEPARTMENT OF TRANSPORTATION</b>	<b>IL 133 PLAN</b>			F.A.P. RTE. 749	SECTION 119 RS-2	COUNTY Moultrie	TOTAL SHEETS 26	SHEET NO. 19
PLOT SCALE = 100.0000' / IN.		CHECKED -	REVISED -		SCALE: 100	SHEET NO. 7 OF 8 SHEETS	STA. 348+00 TO STA. 406+00	CONTRACT NO. 74381				
PLOT DATE = 4/10/2009		DATE -	REVISED -		ILLINOIS FED. AID PROJECT							



- HMA SURFACE REMOVAL, VARIABLE DEPTH (PAVEMENT TRANSITION SEE SHEET #22)
- HMA SURFACE REMOVAL, 2 1/4"
- HMA SURFACE REMOVAL, BUTT JOINT (SEE SHEET #22)

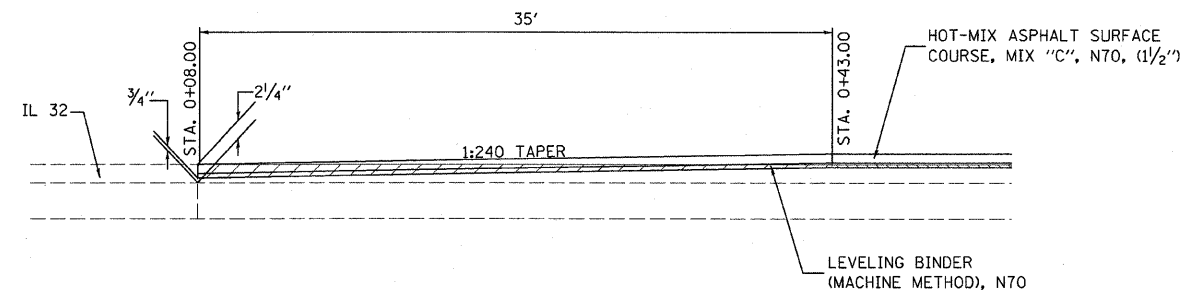


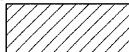
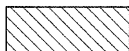
EXIST. CURVE CUR3  
 PI STA. = 2+20.05  
 $\Delta = 14^\circ 36' 46''$  (LT)  
 $D = 3^\circ 28' 10''$   
 $R = 1,651.50'$   
 $T = 211.75'$   
 $L = 421.20'$   
 $E = 13.52'$   
 $\theta =$   
 $T.R. =$   
 $S.E. RUN =$   
 $P.C. STA. = 0+08.30$   
 $P.T. STA. = 4+29.50$

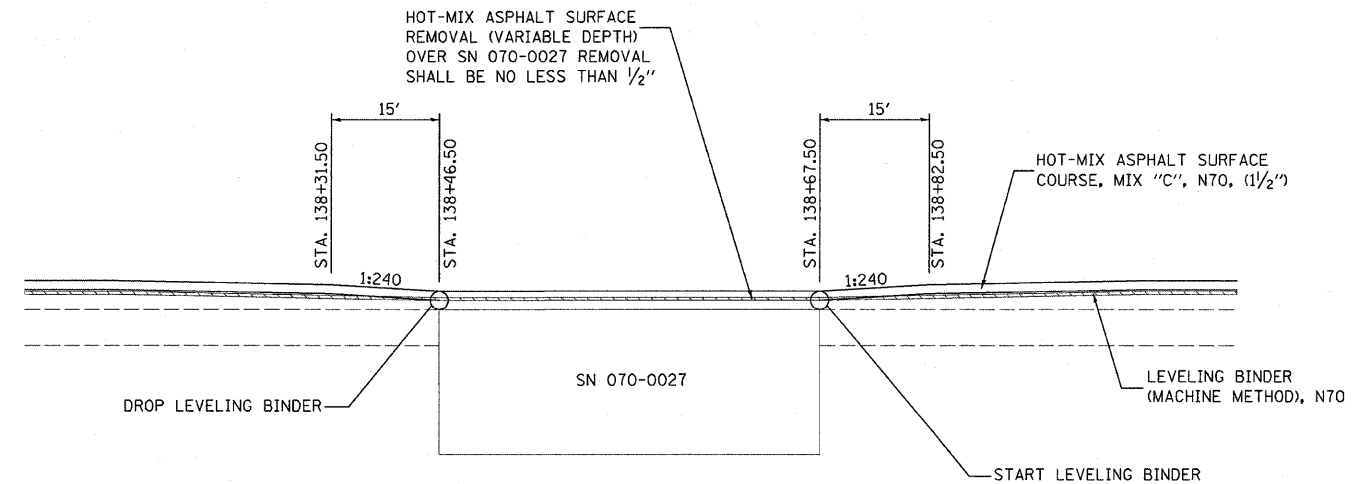
- HMA SURFACE REMOVAL, 2 1/4"
- HMA SURFACE REMOVAL, BUTT JOINT(SEE SHEET #21)


FILE NAME =	USER NAME = teasleyck	DESIGNED -	REVISED -	<b>STATE OF ILLINOIS DEPARTMENT OF TRANSPORTATION</b>	<b>IL 133 PLAN</b>	F.A.P. RTE.	SECTION	COUNTY	TOTAL SHEETS	SHEET NO.	
0:\pwwork\PWID001\TEASLEYCK\d0121195\d7	4381-SHT-PLAN.dgn	DRAWN -	REVISED -			749	119 RS-2	Moultrie	26	20	
PLOT SCALE = 100.0000' / IN.	CHECKED -	REVISED -				CONTRACT NO. 74381					
PLOT DATE = 4/10/2009	DATE -	REVISED -				ILLINOIS FED. AID PROJECT					

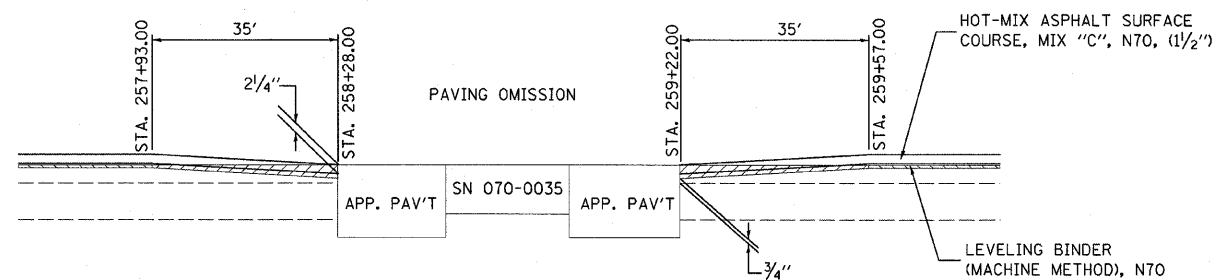
SCALE: 100 SHEET NO. 8 OF 8 SHEETS STA. 406+00 TO STA. 2+90

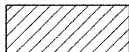



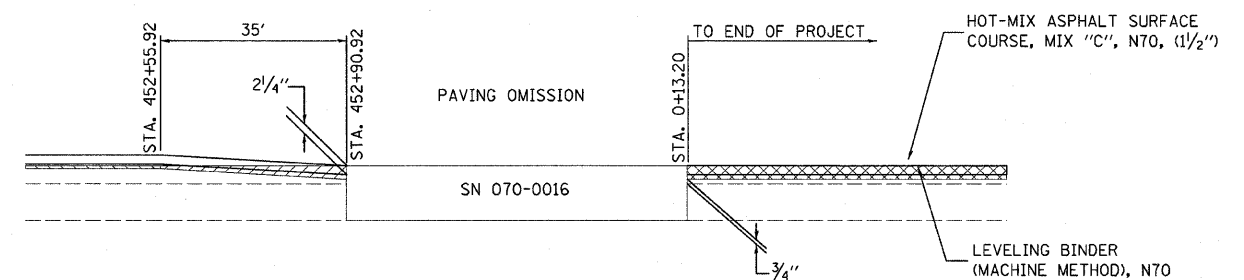
-  HOT-MIX ASPHALT SURFACE REMOVAL, BUTT JOINT
-  HOT-MIX ASPHALT SURFACE REMOVAL (VARIABLE DEPTH)

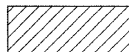
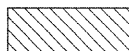



-  HOT-MIX ASPHALT SURFACE REMOVAL (VARIABLE DEPTH)



-  HOT-MIX ASPHALT SURFACE REMOVAL, BUTT JOINT
-  HOT-MIX ASPHALT SURFACE REMOVAL (VARIABLE DEPTH)



-  HOT-MIX ASPHALT SURFACE REMOVAL, BUTT JOINT
-  HOT-MIX ASPHALT SURFACE REMOVAL (VARIABLE DEPTH)
-  HOT-MIX ASPHALT SURFACE REMOVAL, 2 1/4"

FILE NAME =  
c:\pwwork\pwwork\TEASLEYCK\d0121195\07

USER NAME = teasleyck  
4381-sht-details.dgn  
PLOT SCALE = 50.0000' / IN.  
PLOT DATE = 4/10/2009

DESIGNED -  
DRAWN -  
CHECKED -  
DATE -

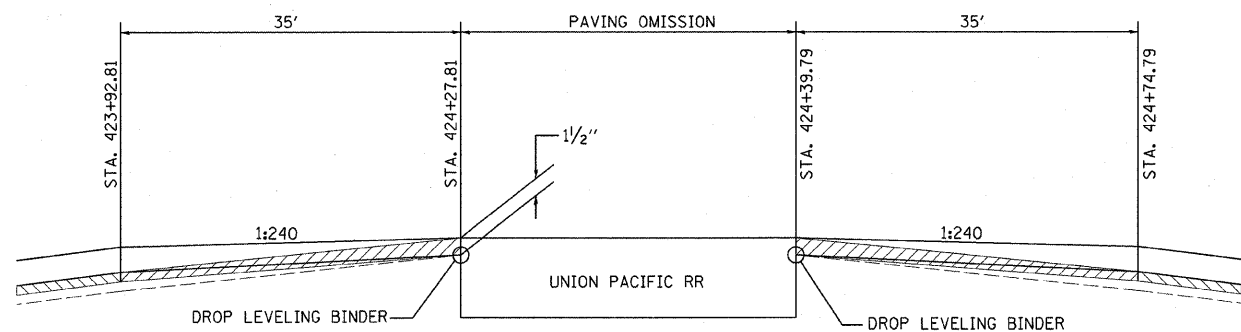
REVISED -  
REVISED -  
REVISED -  
REVISED -

**STATE OF ILLINOIS  
DEPARTMENT OF TRANSPORTATION**

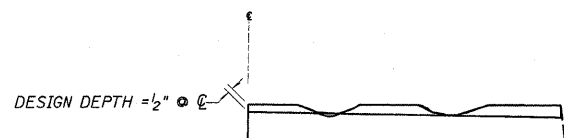
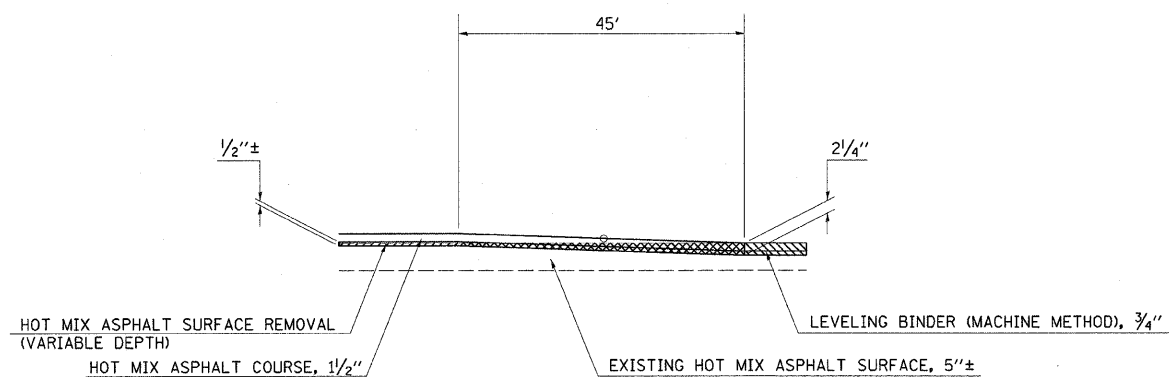
**BUTT JOINT &  
MILLING DETAILS**

SCALE: SHEET NO. 1 OF 2 SHEETS STA. TO STA.

F.A.P. RTE.	SECTION	COUNTY	TOTAL SHEETS	SHEET NO.
749	119RS-2	MOULTRIE	26	21
CONTRACT NO. 74381				
ILLINOIS FED. AID PROJECT				



HOT-MIX ASPHALT SURFACE REMOVAL, BUTT JOINT  
 HOT-MIX ASPHALT SURFACE REMOVAL (VARIABLE DEPTH)

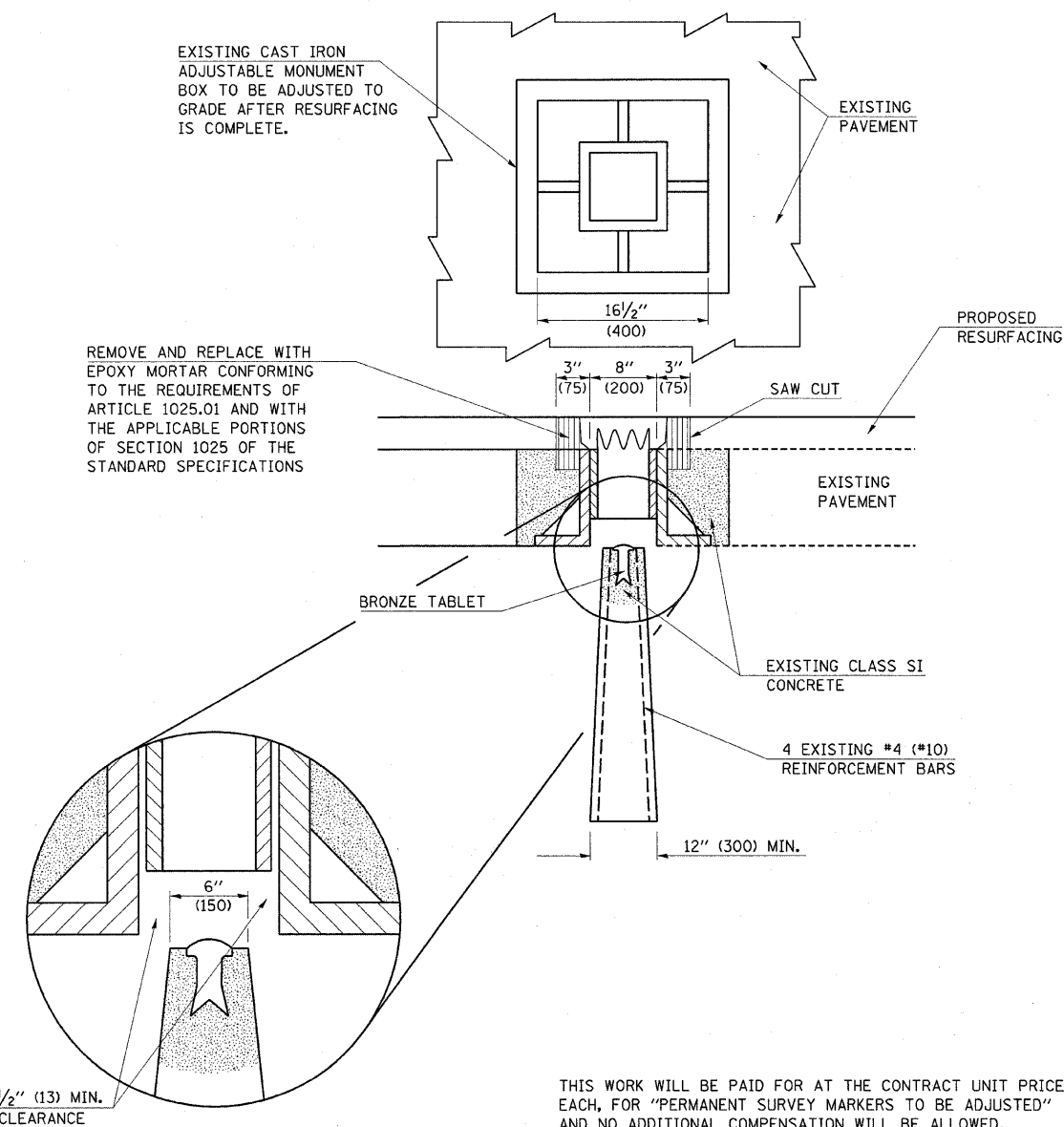


**NOTES:**

1. MILLING SHALL BE DONE TO ATTAIN A 3/16" SLOPE IN CROWN SECTIONS
2. EXISTING S.E. AND S.E. TRANSITIONS SHALL BE MAINTAINED UNLESS OTHERWISE SHOWN ON THE PLANS.
3. MILLING TO THE BOTTOM OF WHEEL RUTS SHALL NOT BE NECESSARY UNLESS REQUIRED TO OBTAIN SLOPE OR THE DESIGN DEPTH AT CENTERLINE.
4. THE AVERAGE DEPTH OF MILLING IS ESTIMATED TO BE 1/2" BUT MAY VARY IN ISOLATED LOCATIONS.

**HOT MIX ASPHALT SURFACE REMOVAL  
(VARIABLE DEPTH) DETAIL**

**66700110 – PERMANENT SURVEY MARKERS TO BE ADJUSTED**  
TO BE INSTALLED FOR PRESERVING EXISTING CAST IRON PERMANENT SURVEY MARKERS, TYPE III

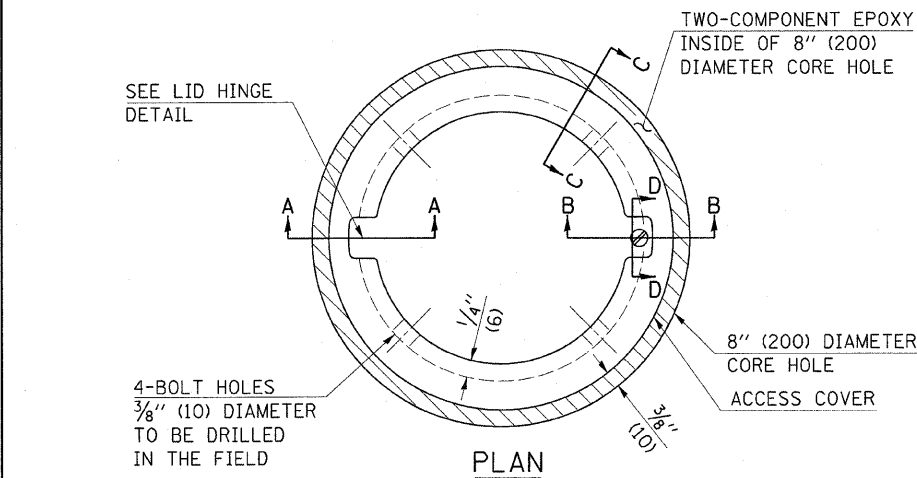


THIS WORK WILL BE PAID FOR AT THE CONTRACT UNIT PRICE, EACH, FOR "PERMANENT SURVEY MARKERS TO BE ADJUSTED" AND NO ADDITIONAL COMPENSATION WILL BE ALLOWED.

	NAME	DATE	REVISIONS	
DESIGNED	Pr.A.T.	1994	NAME	DATE
CHECKED	D.L.P.	12-95	D.L.P.	12-95
CADD NO.	D-1.06		K.A.G.	08-04

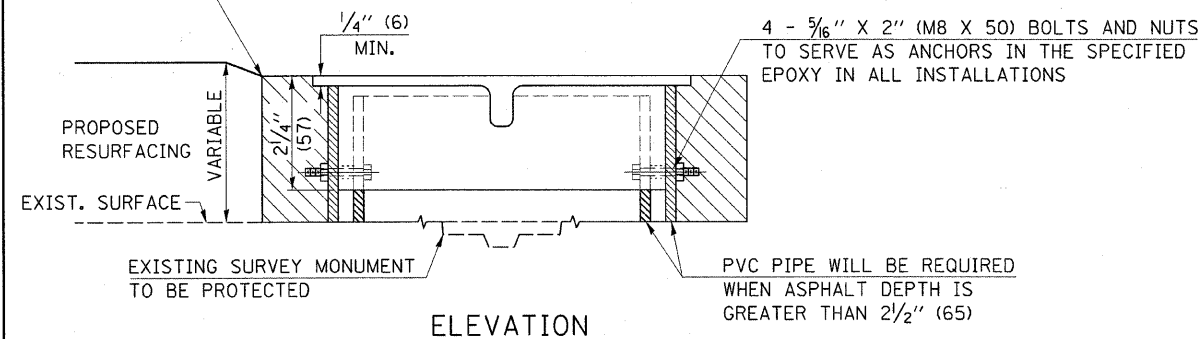
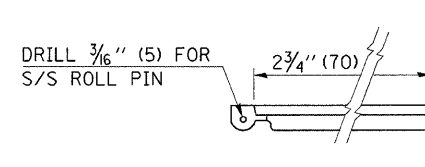
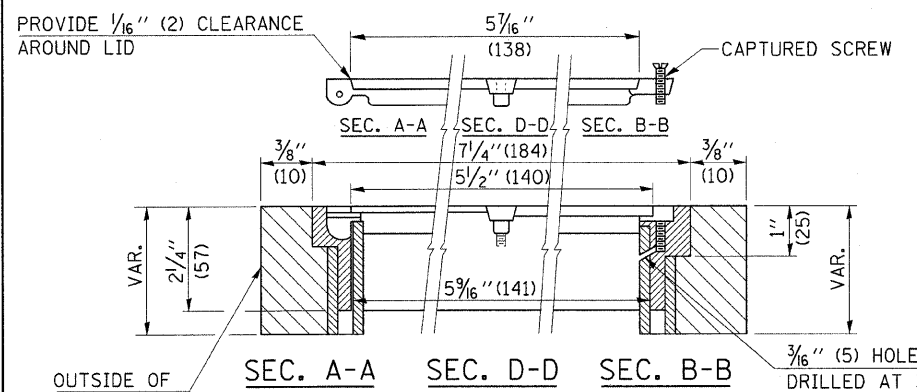
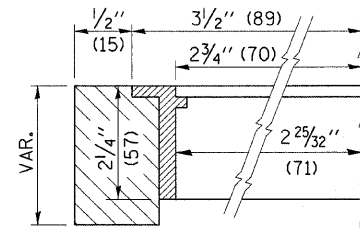
ALL DIMENSIONS ARE IN INCHES (MILLIMETERS) UNLESS OTHERWISE SHOWN.

TO BE INSTALLED IN ALL PAVEMENT TYPES FOR PRESERVING PERMANENT SURVEY MARKERS (PI'S, PT'S, PC'S, POC'S, & POT'S) AND LAND SURVEY MONUMENTS (SECTION OR SUBSECTION CORNERS)



**LEGEND**

- ALUMINUM CASTING
- 5" (125) OR 6" (150) P.V.C. PIPE
- TWO-COMPONENT EPOXY



SPECIFICATIONS FOR ACCESS COVER FOR USE WITH SURVEY MARKER VAULT(S) AND SURVEY MARKER COVER ASSEMBLY(S): THE ACCESS COVER WILL BE CAST FROM A SPECIAL ALUMINUM ALLOY THAT IS COMPARABLE TO BRONZE IN HARDNESS. THE ACCESS COVER SHALL BE SPECIALLY ENGINEERED AND DESIGNED TO PROVIDE A SNUG FIT, INCORPORATING EQUIDISTANT LOCKING RIDGES, INSIDE A STANDARD 6" (150 mm) DIAMETER, OR OUTSIDE A STANDARD 5" (125 mm) DIAMETER, SCHEDULE 40 PVC PIPE. THE ACCESS COVER SHALL HAVE SPECIAL UNIFORM 1" (25 mm) THICK TOP SURFACE TO PERMIT INFORMATION TO BE EASILY MACHINE-STAMPED INTO IT. THE ACCESS COVER SHALL INCLUDE A STAINLESS CAPTURED SCREW AND AN OPPOSING RECESSED HINGE ASSEMBLY AS ITS LOCKING MECHANISM. THE ACCESS COVER SHALL INCORPORATE A SPECIAL ACCESS HOLE FOR CLEANING AND DRAINAGE, DRILLED AT 30° INSIDE THE RING OF THE ACCESS COVER, TO THE DRILLED AND TAPPED HOLE PROVIDED FOR THE STAINLESS CAPTURED SCREW. COMPOSITION: ALUMINUM 92-93%; MAGNESIUM 6.5-7.5%. STRENGTH: YIELD - 19,000-21,000 PSI (131-145 MPa); TENSILE - 38,000-44,000 PSI (262-303 MPa); ELONGATION - 10-15% IN 2" (50 mm). SPECIFICATIONS: ALLOY 535.0; 00-A-601Es. NO EXCEPTIONS.

**BILL OF MATERIAL**

ALUMINUM CASTING OF THE DIMENSIONS AND SPECIFICATIONS SHOWN OR OTHER SUBJECT TO ENGINEER'S APPROVAL OF SHOP DRAWINGS, 4 EACH - 5/16" X 2" (M8 X 50) BOLTS WITH NUTS, EPOXY, 5" OR 6" (125 mm OR 150 mm) DIAMETER P.V.C. PIPE, SCHEDULE 40 (WHEN REQUIRED).

**GENERAL NOTES**

1. WORK SHALL NOT START ON THIS ITEM UNTIL THE FINAL LIFT OF SURFACE HAS BEEN COMPLETED.
2. THE SURVEY MONUMENT COVER ASSEMBLY SHALL BE CENTERED ABOVE THE SURVEY MONUMENT TO BE PROTECTED.
3. MODIFICATION OF THE ALUMINUM CASTING SHALL BE DONE BY GRINDING OR SAWING WHEN HEIGHT REDUCTION IS REQUIRED.
4. ALL SURVEY MONUMENT COVER ASSEMBLIES SHALL BE PLACED 1/4" (6 mm) ± BELOW THE FINAL SURFACE.
5. ALUMINUM CASTING SHALL BE PLACED OVER A 5" (125 mm) P.V.C. PIPE OR INSIDE OF A 6" (150 mm) P.V.C. PIPE WHEN AN INCREASE IN HEIGHT IS REQUIRED.
6. THE CASTING SHALL BE ANCHORED IN THE 8" (200 mm) DIAMETER CORE HOLE WITH TWO-COMPONENT EPOXY CONFORMING TO APPLICABLE PORTIONS OF ARTICLE 1025.01 OF THE STANDARD SPECIFICATIONS.
7. THIS WORK WILL BE PAID FOR AT THE CONTRACT UNIT PRICE EACH FOR SURVEY MONUMENT COVER ASSEMBLY WHICH PRICE SHALL INCLUDE ALL LABOR AND MATERIAL AS SPECIFIED INCLUDING CORING THE NEW PAVEMENT SURFACE AND EPOXY. NO ADDITIONAL COMPENSATION WILL BE ALLOWED.
8. THE 8" (200 mm) DIAMETER CORE HOLE SHALL BE SUBJECT TO THE APPROVAL OF THE ENGINEER.

Note: All dimensions are in INCHES (millimeters) unless otherwise shown.

FILE NAME =	USER NAME = teasleyck	DESIGNED -	REVISED - 11/06
c:\pwwork\pwwork\TEASLEYCK\d0121195\07	4381-sht-details.dgn	DRAWN -	REVISED -
	PLOT SCALE = 50.0000 ' / IN.	CHECKED -	REVISED -
	PLOT DATE = 4/10/2009	DATE -	REVISED -

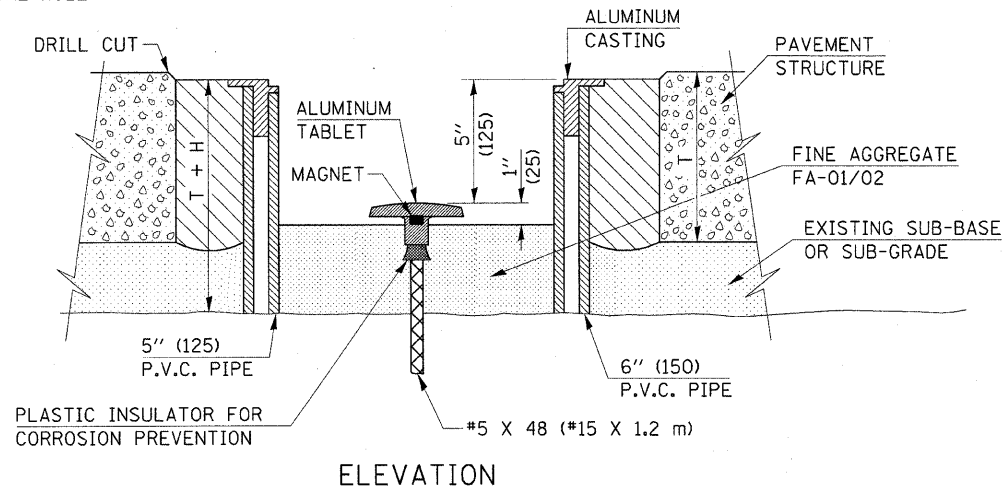
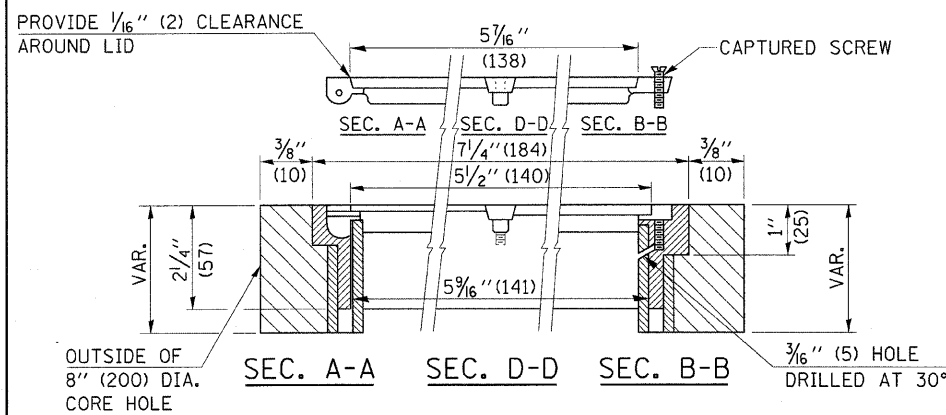
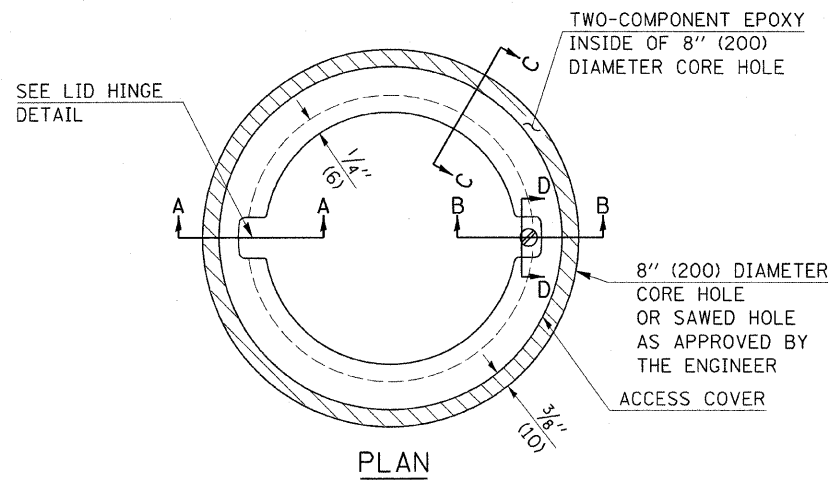
STATE OF ILLINOIS  
DEPARTMENT OF TRANSPORTATION

SURVEY MONUMENT COVER ASSEMBLY

SCALE: SHEET NO. 1 OF 2 SHEETS STA. TO STA.

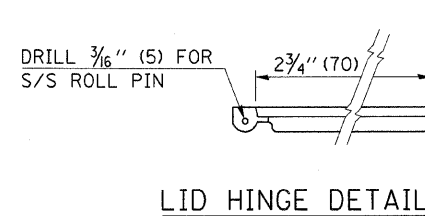
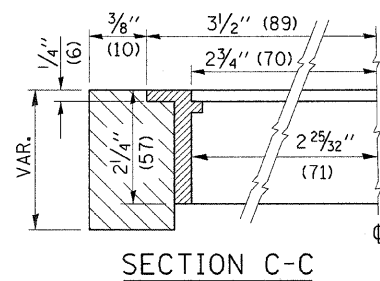
<b>DISTRICT 7 DETAIL NO. Z0070100</b>				
F.A.P. RTE.	SECTION	COUNTY	TOTAL SHEETS	SHEET NO.
749	119RS-2	MOULTRIE	26	23
FED. ROAD DIST. NO. [ILLINOIS] FED. AID PROJECT			CONTRACT NO. 74381	

TO BE INSTALLED IN RIGID OR COMPOSITE PAVEMENT FOR PRESERVING LAND SURVEY MONUMENTS (SECTION OR SUBSECTION CORNERS)



**LEGEND**

- ALUMINUM CASTING
  - 5" (125) OR 6" (150) P.V.C. PIPE
  - TWO-COMPONENT EPOXY
- T = THICKNESS OF PAVEMENT STRUCTURE
- H = THE THICKNESS OF THE SUB-BASE GRANULAR + 1" (25)



SPECIFICATIONS FOR ACCESS COVER FOR USE WITH SURVEY MARKER VAULT(S) AND SURVEY MARKER COVER ASSEMBLY(S): THE ACCESS COVER WILL BE CAST FROM A SPECIAL ALUMINUM ALLOY THAT IS COMPARABLE TO BRONZE IN HARDNESS. THE ACCESS COVER SHALL BE SPECIALLY ENGINEERED AND DESIGNED TO PROVIDE A SNUG FIT, INCORPORATING EQUIDISTANT LOCKING RIDGES, INSIDE A STANDARD 6" (150 mm) DIAMETER, OR OUTSIDE A STANDARD 5" (125 mm) DIAMETER, SCHEDULE 40 PVC PIPE. THE ACCESS COVER SHALL HAVE SPECIAL UNIFORM 1" (25 mm) THICK TOP SURFACE TO PERMIT INFORMATION TO BE EASILY MACHINE-STAMPED INTO IT. THE ACCESS COVER SHALL INCLUDE A STAINLESS CAPTURED SCREW AND AN OPPOSING RECESSED HINGE ASSEMBLY AS ITS LOCKING MECHANISM. THE ACCESS COVER SHALL INCORPORATE A SPECIAL ACCESS HOLE FOR CLEANING AND DRAINAGE, DRILLED AT 30° INSIDE THE RING OF THE ACCESS COVER, TO THE DRILLED AND TAPPED HOLE PROVIDED FOR THE STAINLESS CAPTURED SCREW. COMPOSITION: ALUMINUM 92-93%; MAGNESIUM 6.5-7.5%. STRENGTH: YIELD - 19,000-21,000 PSI (131-145 MPa); TENSILE - 38,000-44,000 PSI (262-303 MPa); ELONGATION - 10-15% IN 2" (50 mm). SPECIFICATIONS: ALLOY 535.0; QQ-A-601Es. NO EXCEPTIONS.

RE-BAR-SURVEY MARKER, TYPE I, (SPECIAL) TO BE FURNISHED BY THE CONTRACTOR AND SET BY AN ILLINOIS PROFESSIONAL LAND SURVEYOR (SEE SPECIAL DETAIL SHEET FOR ALUMINUM TABLET AND RE-BAR SPECIFICATIONS).

**BILL OF MATERIAL**

ALUMINUM CASTING OF THE DIMENSIONS AND SPECIFICATIONS SHOWN OR OTHER SUBJECT TO ENGINEER'S APPROVAL OF SHOP DRAWINGS, 5" OR 6" (125 mm OR 150 mm) DIAMETER P.V.C. PIPE, SCHEDULE 40, ALUMINUM TABLET, STAMPED IN ACCORDANCE WITH STANDARD 667101. 5/8" X 48" (#15 X 1.2 m) RE-BAR, EPOXY AND FA-01/02 AGGREGATE.

**GENERAL NOTES**

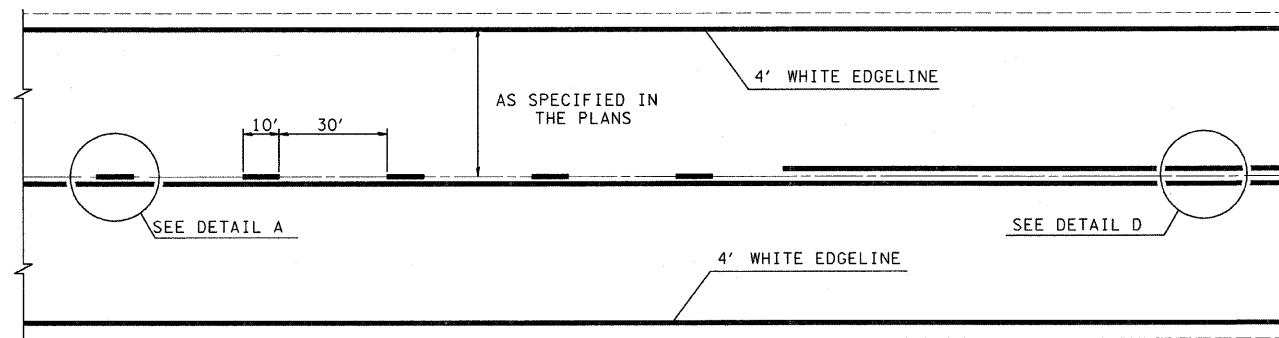
1. ALUMINUM CASTING SHALL BE EITHER PLACED OVER A 5" (125 mm) P.V.C. PIPE OR INSIDE OF A 6" (150 mm) P.V.C. PIPE.
2. BACKFILL WITH FINE AGGREGATE - FA-01/02.
3. WORK SHALL NOT START ON THIS ITEM UNTIL THE FINAL LIFT OF SURFACE HAS BEEN COMPLETED.
4. THIS WORK WILL BE PAID FOR AT THE CONTRACT UNIT PRICE EACH FOR SURVEY MARKER VAULT WHICH PRICE SHALL INCLUDE ALL LABOR AND MATERIAL AS SPECIFIED INCLUDING CORING, EPOXY AND FA-01/02 AGGREGATE AND NO ADDITIONAL COMPENSATION WILL BE ALLOWED.
5. THE CASTING SHALL BE ANCHORED IN THE 8" (200 mm) DIAMETER CORE HOLE WITH TWO-COMPONENT EPOXY CONFORMING TO APPLICABLE PORTIONS OF ARTICLE 1025.01 OF THE STANDARD SPECIFICATIONS.
6. ALL SURVEY MARKER (VAULTS) SHALL BE PLACED 1/4" (6 mm) ± BELOW THE FINAL SURFACE.
7. THE 8" (200 mm) DIAMETER CORE HOLE SHALL BE SUBJECT TO THE APPROVAL OF THE ENGINEER.

Note: All dimensions are in INCHES (millimeters) unless otherwise shown.

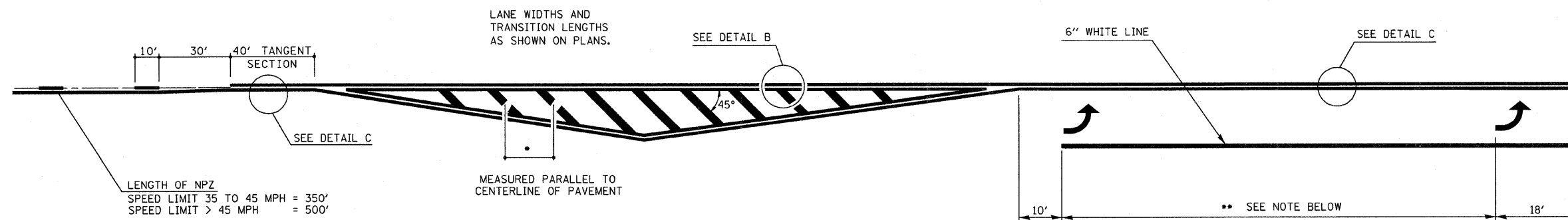
**DISTRICT 7 DETAIL NO. X0301232**

FILE NAME =	USER NAME = teasleyck	DESIGNED -	REVISED - 11/06	<b>STATE OF ILLINOIS DEPARTMENT OF TRANSPORTATION</b>	<b>SURVEY MARKER VAULT</b>	F.A.P. RTE.	SECTION	COUNTY	TOTAL SHEETS	SHEET NO.	
ca\pwwork\PW1001\TEASLEYCK\d0121195\07	4381-sht-details.dgn	DRAWN -	REVISED -			749	119RS-2	MOULTRIE	26	24	
PLOT SCALE = 50,0000' / IN.		CHECKED -	REVISED -			CONTRACT NO. 74381					
PLOT DATE = 4/10/2009		DATE -	REVISED -			FED. ROAD DIST. NO. ILLINOIS FED. AID PROJECT					
				SCALE:	SHEET NO. 2 OF 2 SHEETS	STA.	TO STA.				





TYPICAL CENTERLINE, NO PASSING ZONE LINE (NPZ) & EDGELINE MARKINGS  
2-LANE PAVEMENT



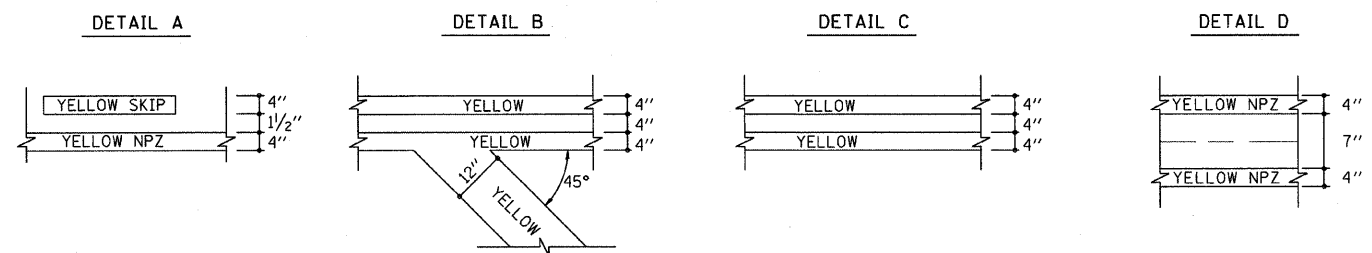
LENGTH OF NPZ  
SPEED LIMIT 35 TO 45 MPH = 350'  
SPEED LIMIT > 45 MPH = 500'

•DIAGONAL SPACING

SPEED LIMIT	< 30 MPH	= 15'
SPEED LIMIT	30 TO 45 MPH	= 20'
SPEED LIMIT	> 45 MPH	= 30'

•• PLACE THE FIRST ARROW EVEN WITH THE BEGINNING OF THE TURN BAY.  
PLACE ANOTHER ARROW 18' BACK FROM THE STOP BAR. IF REQUIRED,  
ADD ADDITIONAL ARROWS TO MAINTAIN A MAXIMUM OF 80' SPACING.

- NOTES:
1. OMIT EDGELINE THRU SIDE ROADS.
  2. TAPER RATES, LANE WIDTHS, AND STORAGE LENGTHS AS SHOWN ON THE PLANS.
  3. WHEN MEDIANS ARE PRESENT, PLACE A SINGLE YELLOW STRIPE AROUND ITS PERIMETER.

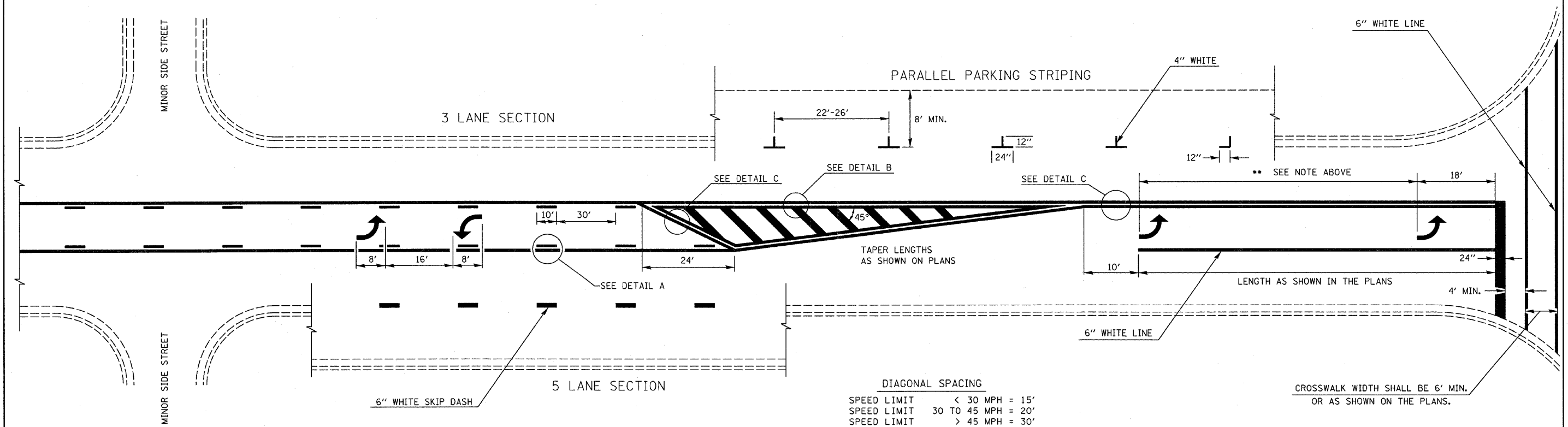


NOT TO SCALE

TYPICAL APPLICATION OF PAVEMENT MARKINGS  
SHEET 1 OF 2

FILE NAME =	USER NAME = teasleyck	DESIGNED -	REVISED -	<b>STATE OF ILLINOIS DEPARTMENT OF TRANSPORTATION</b>	<b>PAVEMENT MARKING DETAIL</b>			F.A.P. RTE.	SECTION	COUNTY	TOTAL SHEETS	SHEET NO.
ca\pwork\FWIDDT\TEASLEYCK\0121195\07	4381-sht-details.dgn	DRAWN -	REVISED -					749	119RS-2	MOULTRIE	26	25
	PLOT SCALE = 50.0000' / IN.	CHECKED -	REVISED -		CONTRACT NO. 74381							
	PLOT DATE = 4/18/2009	DATE -	REVISED -		SCALE: NA	SHEET NO. 1 OF 2	SHEETS	STA.	TO STA.	FED. ROAD DIST. NO.	ILLINOIS FED. AID PROJECT	

•• PLACE THE FIRST ARROW EVEN WITH THE BEGINNING OF THE TURN BAY.  
 PLACE ANOTHER ARROW 18' BACK FROM THE STOP BAR. IF REQUIRED,  
 ADD ADDITIONAL ARROWS TO MAINTAIN A MAXIMUM OF 80' SPACING.



DIAGONAL SPACING

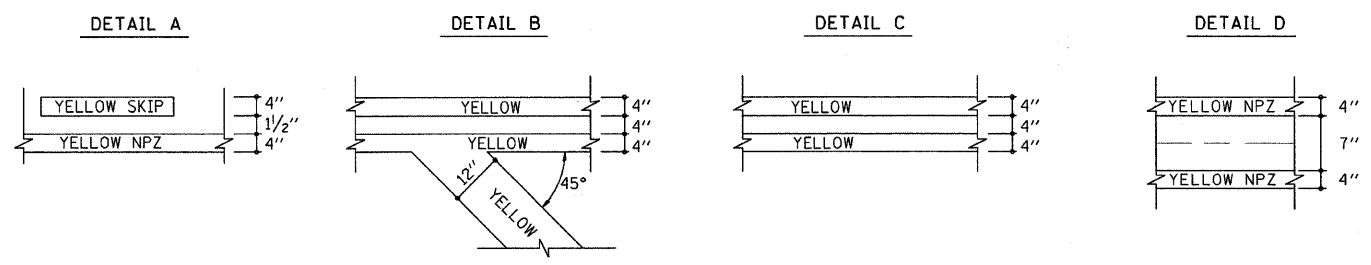
SPEED LIMIT	< 30 MPH	= 15'
SPEED LIMIT	30 TO 45 MPH	= 20'
SPEED LIMIT	> 45 MPH	= 30'

CROSSWALK WIDTH SHALL BE 6' MIN.  
 OR AS SHOWN ON THE PLANS.

**TYPICAL BI-DIRECTIONAL TURN LANE MARKINGS**  
 (SHOWING TRANSITION TO EXCLUSIVE LEFT TURN LANE)

NOTES:

1. NO LESS THAN 2 ARROWS SHALL BE USED.
2. TAPER RATES, LANE WIDTHS, AND STORAGE LENGTHS AS SHOWN ON THE PLANS.
3. AVOID PLACING BI-DIRECTIONAL ARROWS IN INTERSECTIONS.
4. BI-DIRECTIONAL ARROWS SHALL BE SPACED A MAXIMUM OF 250'.



NOT TO SCALE

**TYPICAL APPLICATION OF PAVEMENT MARKINGS**  
**SHEET 2 OF 2**

FILE NAME =	USER NAME = teasleyk	DESIGNED -	REVISED -	<b>STATE OF ILLINOIS DEPARTMENT OF TRANSPORTATION</b>	<b>PAVEMENT MARKING DETAIL</b>			F.A.P. RTE.	SECTION	COUNTY	TOTAL SHEETS	SHEET NO.
c:\pwork\PW1001\TEASLEYCK\08121195\07	4381-shd-details.dgn	DRAWN -	REVISED -					749	119RS-2	MOULTRIE	26	26
	PLOT SCALE = 50.0000' / IN.	CHECKED -	REVISED -		CONTRACT NO. 74381			ILLINOIS FED. AID PROJECT				
	PLOT DATE = 4/18/2009	DATE -	REVISED -		SCALE: NA	SHEET NO. 2 OF 2 SHEETS	STA. TO STA.					