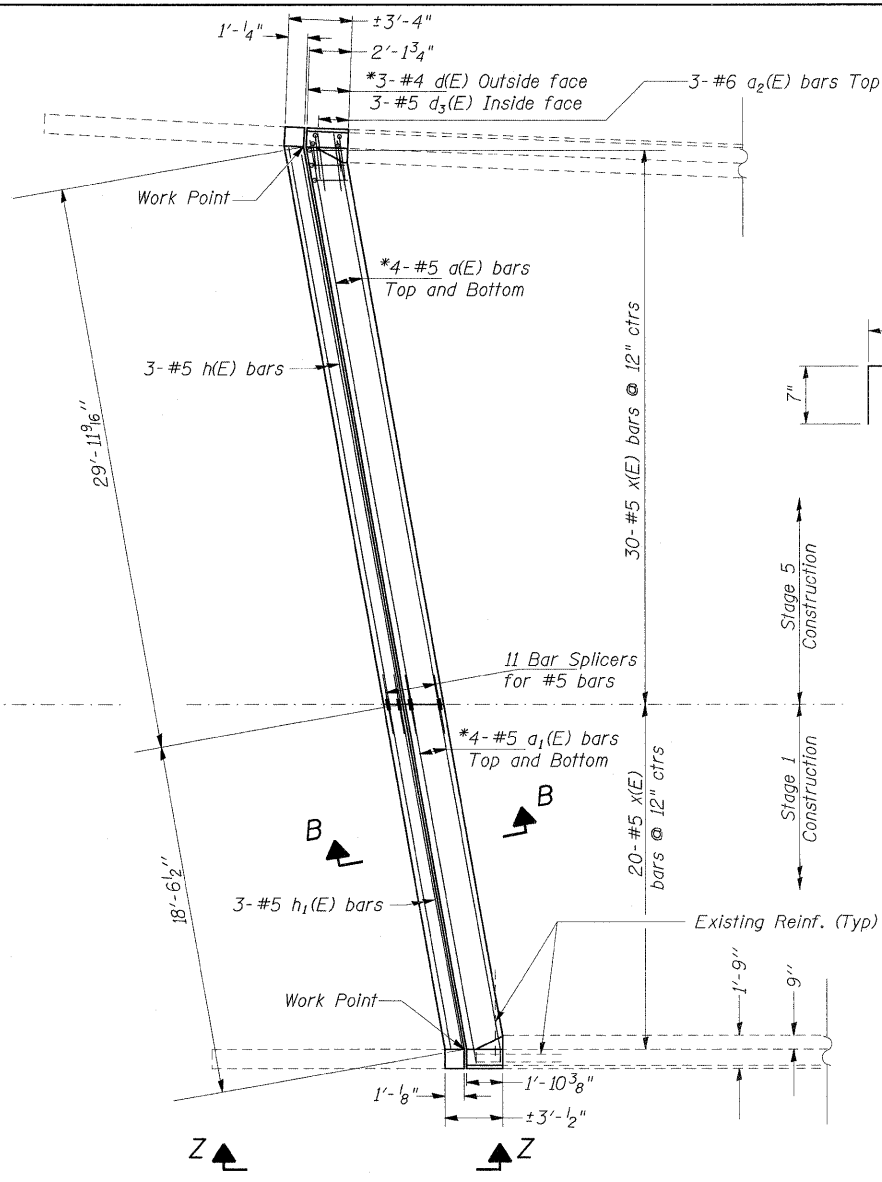
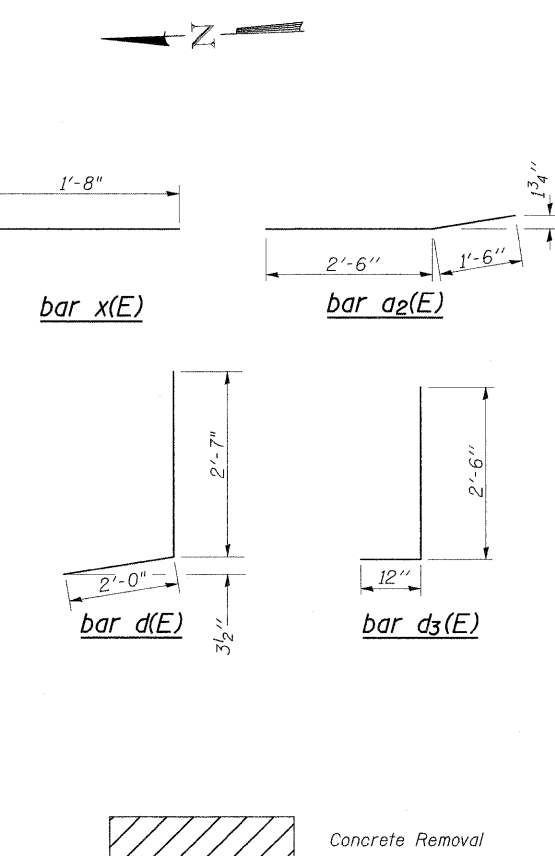


**NORTH ABUT. PLAN
SHOWING CONCRETE REMOVAL**

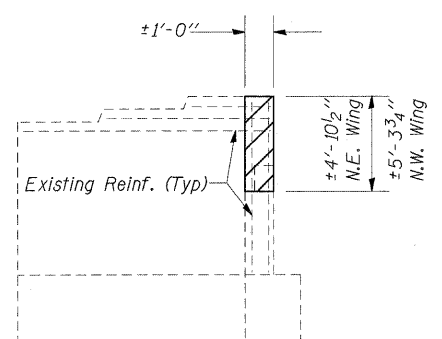


**NORTH ABUT. PLAN
SHOWING NEW CONCRETE**

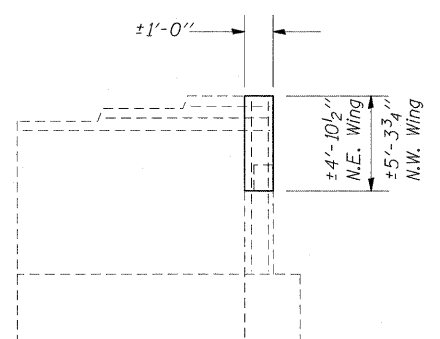


SECTION A-A
Dimensions measured @ Right Angles

SECTION B-B
Dimensions measured @ Right Angles

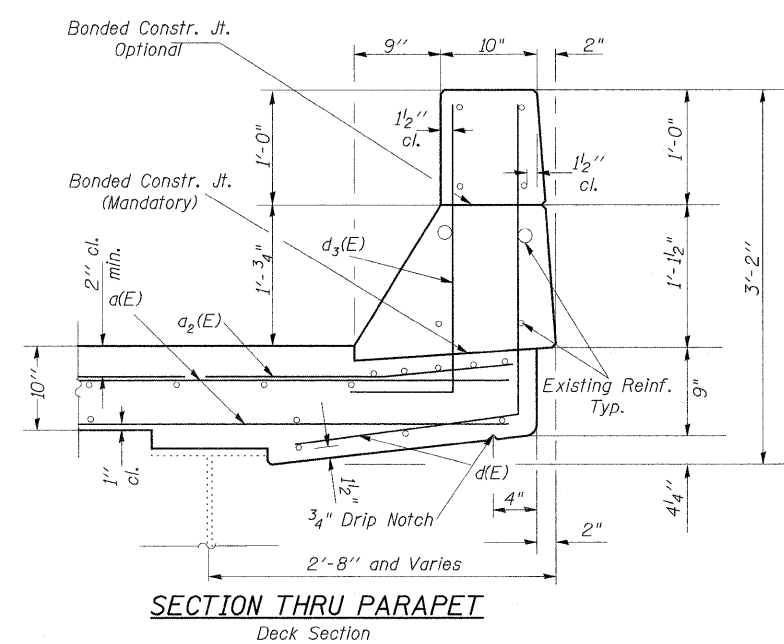


VIEW C-C
Showing Concrete Removal



VIEW Z-Z
Showing Concrete Superstructures

Notes:
 * Bend Bars in Field to fit.
 Dimensions are based on a Rolled Rail Strip Seal Joint.
 If the Contractor elects to use the Welded Rail Strip Seal Joint, deck dimensions may require adjustments to satisfy the details on Base Sheet EJ-SSJ.



SECTION THRU PARAPET
Deck Section

BILL OF MATERIAL

Bar No.	Size	Length	Shape
a(E)	#5	30'-2"	—
a1(E)	#5	18'-9"	—
a2(E)	#6	4'-0"	—
d(E)	#4	4'-7"	┘
d3(E)	#5	3'-6"	┘
h(E)	#5	29'-8"	—
h1(E)	#5	18'-3"	—
x(E)	#5	2'-3"	┘
Concrete Superstructure			Cu. Yd. 8.2
Concrete Removal			Cu. Yd. 7.6
Reinforcement Bars, Epoxy Coated			Pound 750

**NORTH ABUT.
JOINT REPLACEMENT DETAILS
ALEXANDER COUNTY
SN 002-0023**

FILE NAME =	USER NAME = halsteadtw	DESIGNED -	REVISED -
cd\pwwork\PIWIDOT\HALSTEADTW\d0113592\002-0023.dgn		DRAWN -	REVISED -
	PLOT SCALE = 5.0000' / 1"	CHECKED -	REVISED -
	PLOT DATE = 4/3/2009	DATE -	REVISED -

**STATE OF ILLINOIS
DEPARTMENT OF TRANSPORTATION**

**JOINT REPLACEMENT DETAILS
SN 002-0023**

SCALE: SHEET NO. OF SHEETS STA. TO STA.

F.A.I. RTE.	SECTION	COUNTY	TOTAL SHEETS	SHEET NO.
57	D9 BSMART FY09-2	ALEXANDER	45	17
CONTRACT NO. 78111				
ILLINOIS FED. AID PROJECT				