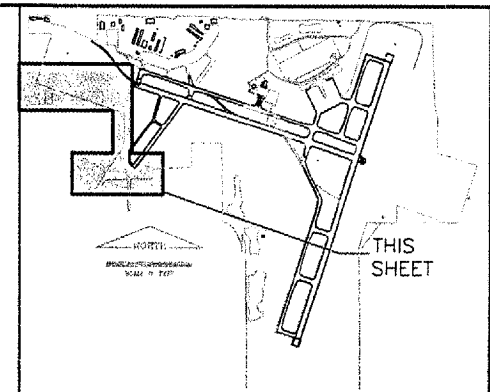


THE INFORMATION SHOWN ON THESE PLANS HAS BEEN OBTAINED FROM AVAILABLE RECORDS. NEITHER THE OWNER NOR THE ENGINEER ASSUMES ANY RESPONSIBILITY WHATEVER IN RESPECT TO THE ACCURACY OR SUFFICIENCY OF THE INFORMATION AND THERE IS NO GUARANTEE EITHER EXPRESSED OR IMPLIED THAT THE CONDITIONS INDICATED ARE REPRESENTATIVE OF THOSE TO BE ENCOUNTERED IN THE FIELD. IT SHALL BE THE CONTRACTOR'S RESPONSIBILITY TO VISIT THE SITE AND ACQUAINT HIMSELF WITH THE EXISTING CONDITIONS.



LEGEND

— X —	EXISTING FENCE
(-) X	GATE
□	INLET
~~~~~	VEGETATION
●	BUSH
○	TREE
⊙	EVERGREEN
—	CROPLINE
—	UTILITIES
⊕	POWER POLE
□ JB	JB TELEPHONE PEDESTAL
⊞ JB	ELECTRIC JUNCTION



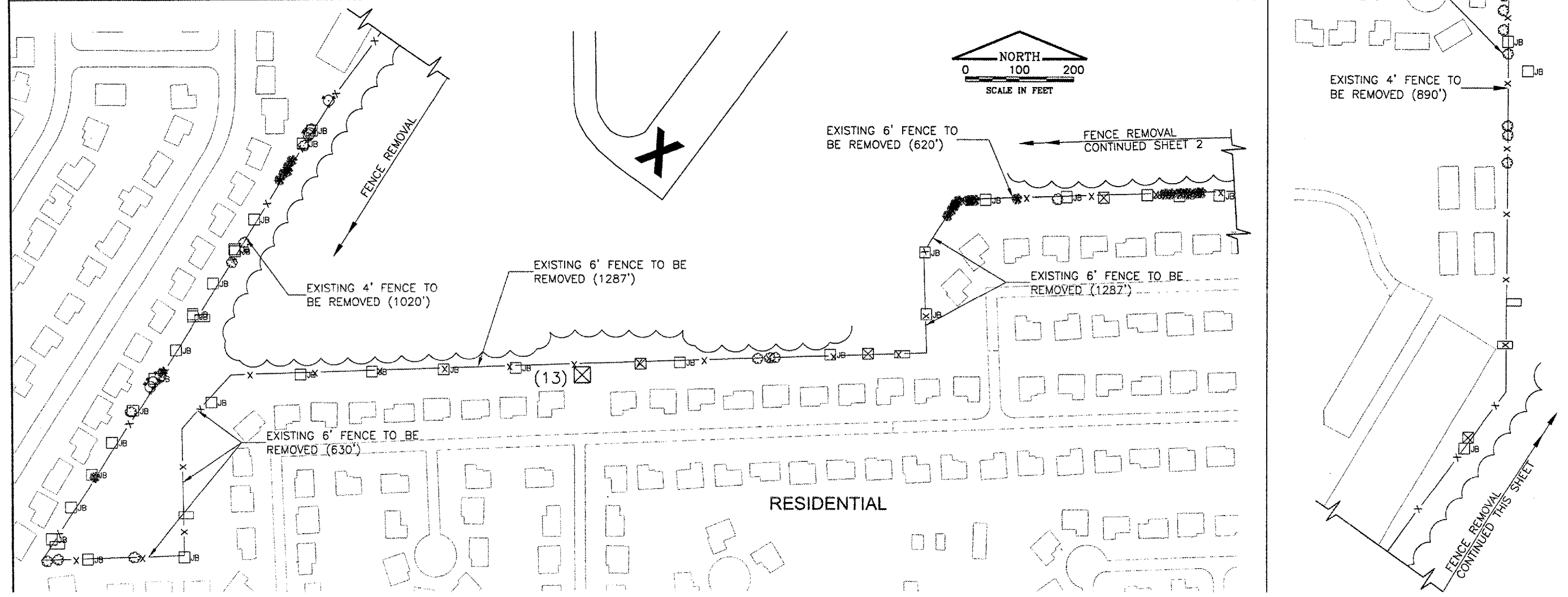
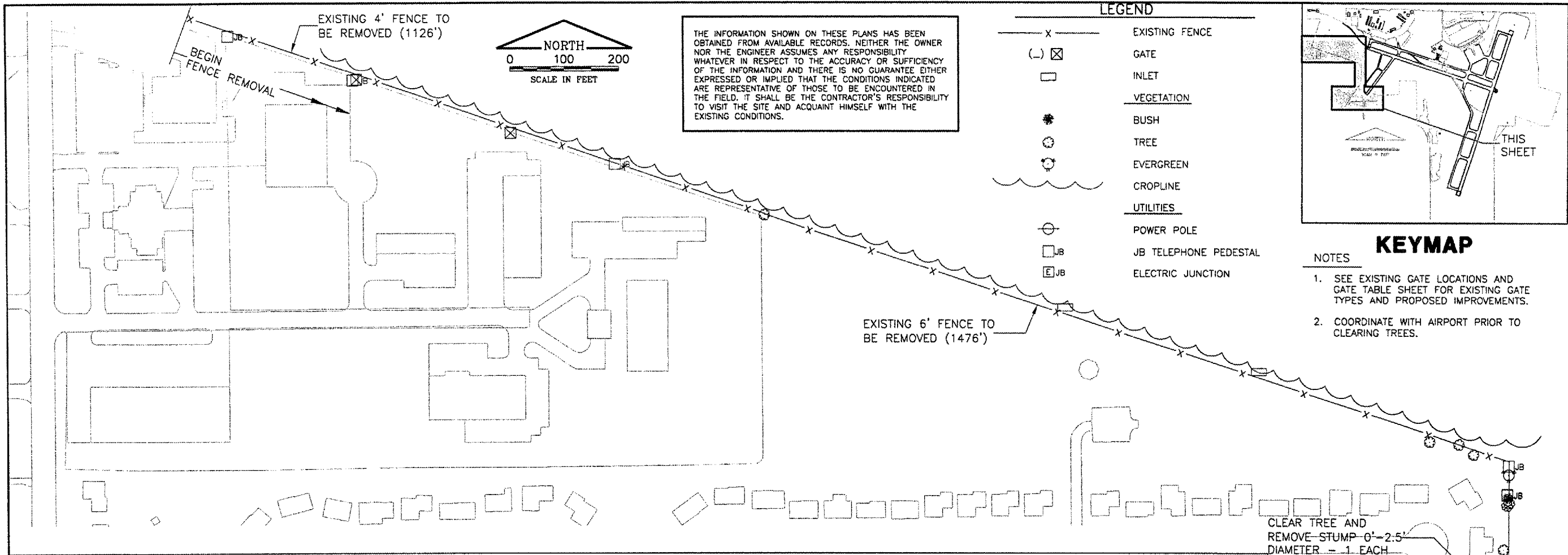
- KEYMAP**
- NOTES
- SEE EXISTING GATE LOCATIONS AND GATE TABLE SHEET FOR EXISTING GATE TYPES AND PROPOSED IMPROVEMENTS.
  - COORDINATE WITH AIRPORT PRIOR TO CLEARING TREES.

K:\BloomingtonAp\0708506\Draw\Sheets  
 FILE: ExistCond.-1.dwg  
 UPDATE BY: Chris Groth  
 PLOT DATE: 4/16/2008 7:39 PM  
 surveytopo  
 BASE_EXISTGEO  
 Security-Base  
 EPFenceBase  
 KEYMAP

**BL062**

REVISIONS		
NUMBER	BY	DATE

0 1 2  
 THIS BAR IS EQUAL TO 2" AT FULL SCALE (34X22).



**BLOOMINGTON-NORMAL AIRPORT AUTHORITY**  
**CENTRAL ILLINOIS REGIONAL AIRPORT**  
**BLOOMINGTON, ILLINOIS**  
**UPGRADE PERIMETER FENCE PHASE 2**  
**EXISTING CONDITIONS AND REMOVALS**  
**SHEET 1**

© Copyright CMT, Inc.

**CMT**  
 CRAWFORD, MURPHY & TILLY, INC.  
 CONSULTING ENGINEERS  
 License No. 184-00063

DESIGN BY:	CBG
DRAWN BY:	CMT
CHECKED BY:	CBG
APPROVED BY:	RDN
DATE:	MAY 9, 2008
JOB No:	0708506
BMI-3599 3-17-0006-XX	
SHEET 08 OF 16 SHEETS	