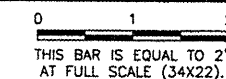


CA006

REVISIONS

NUMBER	BY	DATE



CONSTRUCTION ACTIVITY PLAN NOTES - GENERAL

1. THE CONTRACTOR SHALL PLACE BARRICADES IN AREAS AS SHOWN PRIOR TO STARTING WORK IN EACH AREA.
2. THE AIRPORT WILL REQUIRE A 7 CALENDAR DAY NOTICE FROM THE CONTRACTOR PRIOR TO INITIATING WORK TO COORDINATE WITH THE TENANTS.
3. THE CONTRACTOR SHALL COORDINATE CLOSURE AND BLOCKED ACCESS AREAS WITH THE AIRPORT. THE WORK SHALL BE PERFORMED ON A MUTUALLY AGREED UPON DATE AND IN A TIMELY MANNER.
4. BARRICADES LOCATED ON THE IDOT RAMP PAVEMENT SHALL BE RELOCATED TO THE TURF AT PAVEMENT DROP OFFS AT THE END OF EACH WORK DAY AS DIRECTED BY THE AIRPORT.
5. CONTRACTOR'S STAGING AND STORAGE SHALL BE AS SHOWN ON SITE PLAN.
6. ALL CONSTRUCTION PHASES MAY BE CONSTRUCTED CONCURRENTLY.
7. BARRICADES AS SHOWN IN PLAN SHALL BE RELOCATED TO THE TURF AT PAVEMENT DROP OFFS AT THE END OF EACH WORK DAY AS DIRECTED BY THE AIRPORT.

CONSTRUCTION ACTIVITY PLAN NOTES - PHASE 1

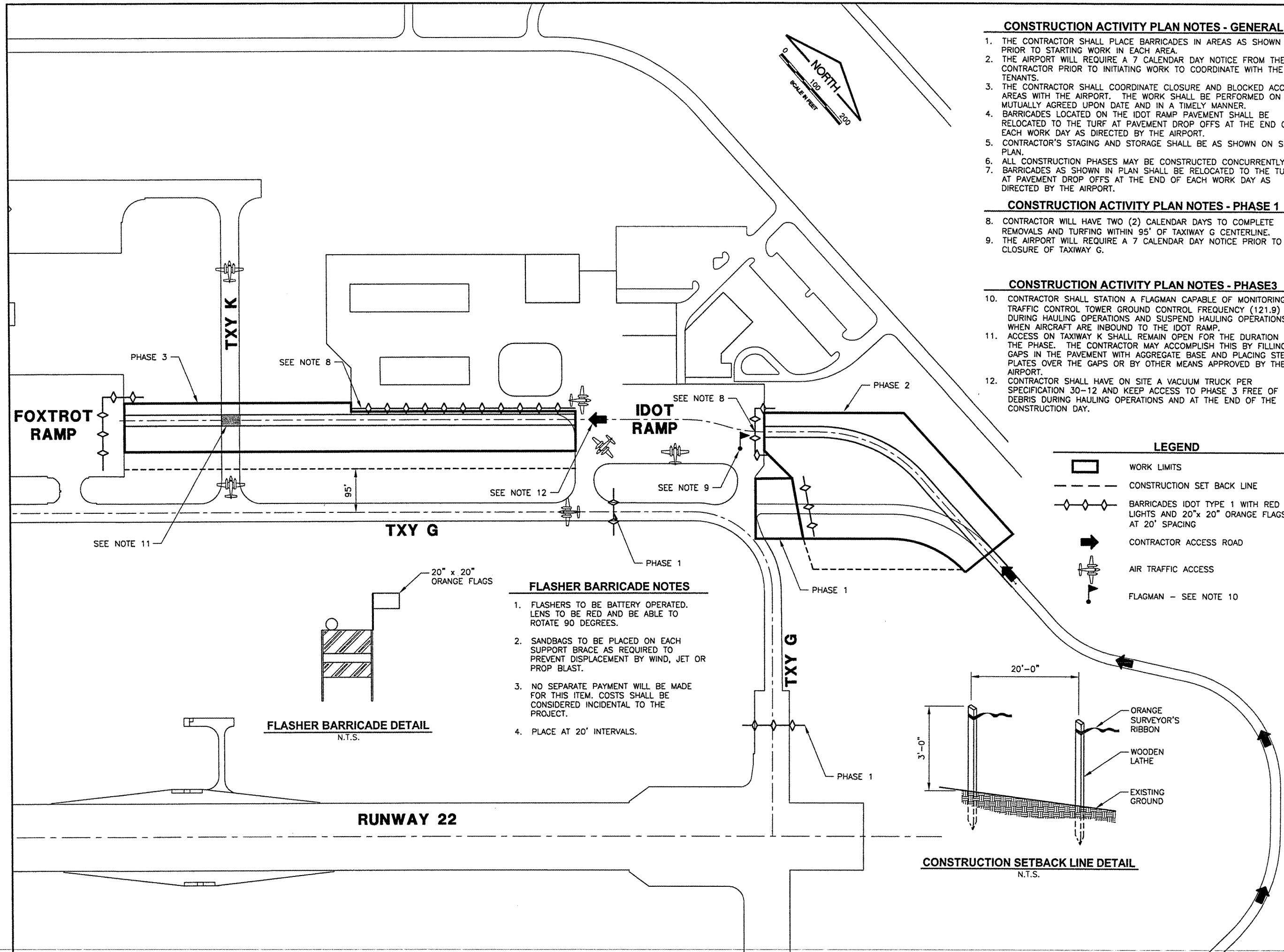
8. CONTRACTOR WILL HAVE TWO (2) CALENDAR DAYS TO COMPLETE REMOVALS AND TURFING WITHIN 95' OF TAXIWAY G CENTERLINE.
9. THE AIRPORT WILL REQUIRE A 7 CALENDAR DAY NOTICE PRIOR TO THE CLOSURE OF TAXIWAY G.

CONSTRUCTION ACTIVITY PLAN NOTES - PHASE 3

10. CONTRACTOR SHALL STATION A FLAGMAN CAPABLE OF MONITORING AIR TRAFFIC CONTROL TOWER CONTROL FREQUENCY (121.9) DURING HAULING OPERATIONS AND SUSPEND HAULING OPERATIONS WHEN AIRCRAFT ARE INBOUND TO THE IDOT RAMP.
11. ACCESS ON TAXIWAY K SHALL REMAIN OPEN FOR THE DURATION OF THE PHASE. THE CONTRACTOR MAY ACCOMPLISH THIS BY FILLING IN GAPS IN THE PAVEMENT WITH AGGREGATE BASE AND PLACING STEEL PLATES OVER THE GAPS OR BY OTHER MEANS APPROVED BY THE AIRPORT.
12. CONTRACTOR SHALL HAVE ON SITE A VACUUM TRUCK PER SPECIFICATION 30-12 AND KEEP ACCESS TO PHASE 3 FREE OF DEBRIS DURING HAULING OPERATIONS AND AT THE END OF THE CONSTRUCTION DAY.

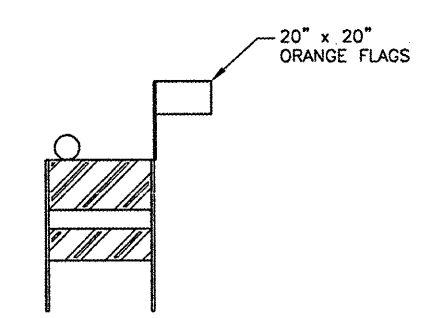
LEGEND

- WORK LIMITS
- CONSTRUCTION SET BACK LINE
- BARRICADES IDOT TYPE 1 WITH RED LIGHTS AND 20" x 20" ORANGE FLAGS AT 20' SPACING
- CONTRACTOR ACCESS ROAD
- AIR TRAFFIC ACCESS
- FLAGMAN - SEE NOTE 10

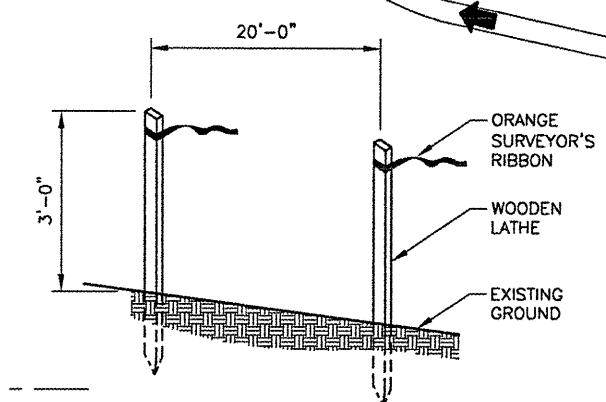


FLASHER BARRICADE NOTES

1. FLASHERS TO BE BATTERY OPERATED. LENS TO BE RED AND BE ABLE TO ROTATE 90 DEGREES.
2. SANDBAGS TO BE PLACED ON EACH SUPPORT BRACE AS REQUIRED TO PREVENT DISPLACEMENT BY WIND, JET OR PROP BLAST.
3. NO SEPARATE PAYMENT WILL BE MADE FOR THIS ITEM. COSTS SHALL BE CONSIDERED INCIDENTAL TO THE PROJECT.
4. PLACE AT 20' INTERVALS.



FLASHER BARRICADE DETAIL
N.T.S.



CONSTRUCTION SETBACK LINE DETAIL
N.T.S.

SPRINGFIELD AIRPORT AUTHORITY
 ABRAHAM LINCOLN CAPITAL AIRPORT
 SPRINGFIELD, IL
 TAXIWAY G WIDENING-PHASE 1 REALIGN NORTH PERIMETER ROAD
 CONSTRUCTION ACTIVITY PLAN

© Copyright CMT, Inc.
CMT
 CRANFORD, MURPHY & TILLY, INC.
 CONSULTING ENGINEERS
 License No. 184-000510

DESIGN BY:	CBG
DRAWN BY:	DPA/JLR
CHECKED BY:	CBG
APPROVED BY:	RUN
DATE:	APRIL 25, 2008
JOB No:	07035-09-00
IL PROJ. NO.	SPI-3789
AIP PROJ. NO.	3-17-0096-XX
SHEET	04 OF 22 SHEETS