

PER FAA AC 150/5340-30B DESIGN AND INSTALLATION DETAILS FOR AIRPORT VISUAL AIDS, A SAFETY GROUND MUST BE INSTALLED AT EACH LIGHT FIXTURE. A SAFETY GROUND SHALL BE INSTALLED AT EACH STAKE MOUNTED LIGHT AND EACH TRANSFORMER BASE/LIGHT CAN ASSOCIATED WITH RUNWAY LIGHTS, TAXIWAY LIGHTS, AND LIGHTED TAXI GUIDANCE SIGNS. THE SAFETY GROUND SHALL BE A #6 AWG BARE COPPER CONDUCTOR CONNECTED TO THE GROUND LUG ON THE RESPECTIVE L-867 TRANSFORMER BASE/LIGHT CAN OR MOUNTING STAKE AND A 3/8-INCH DIAMETER BY 8-FOOT LONG (MINIMUM) UL LISTED COPPER CLAD GROUND ROD. SEE ELECTRICAL DETAIL SHEETS FOR ADDITIONAL INFORMATION ON THIS REQUIREMENT.

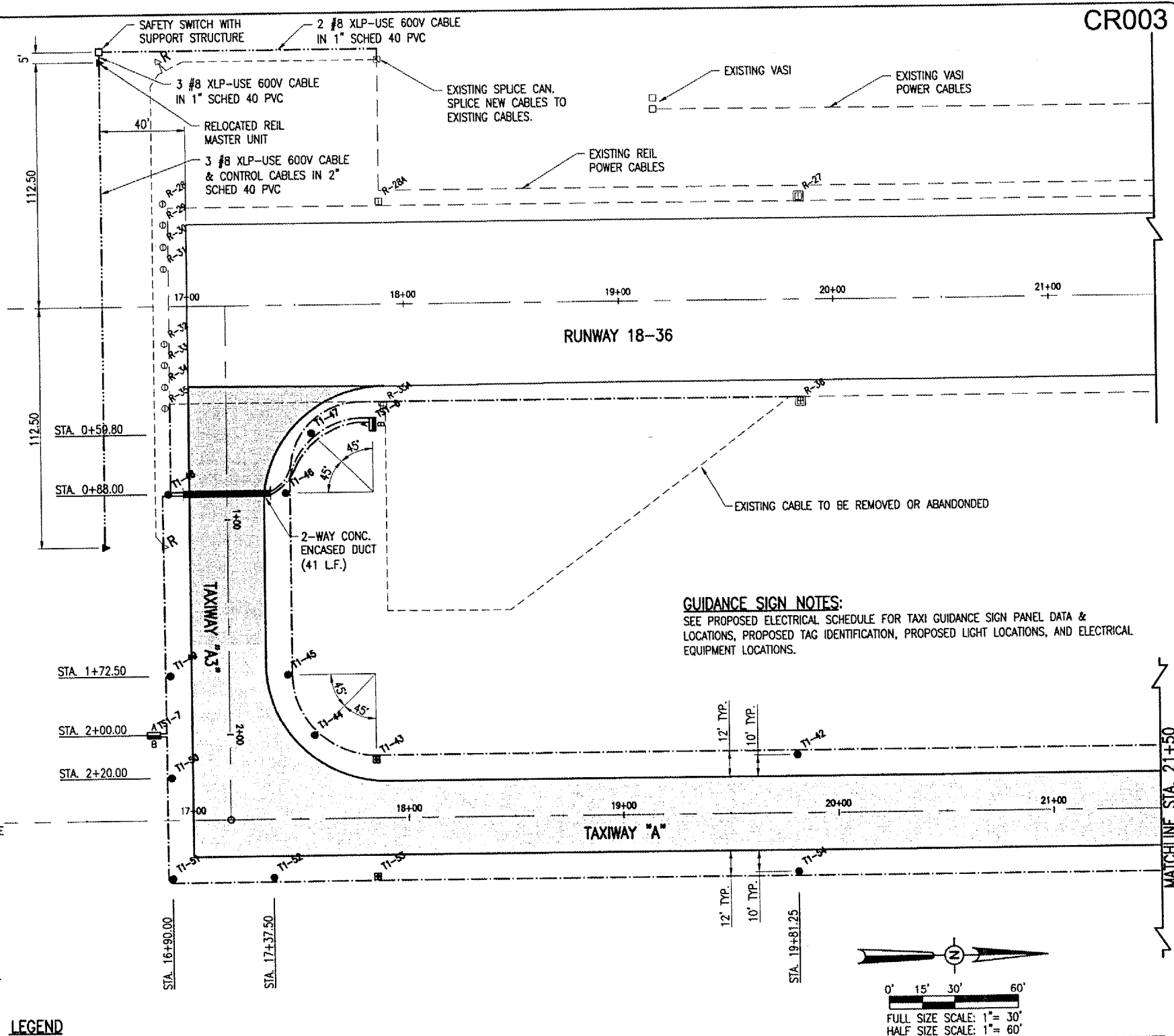
THE LOCATION, SIZE AND TYPE OF MATERIAL OF EXISTING UNDERGROUND UTILITIES INDICATED ON THE PLANS IS NOT REPRESENTED AS BEING ACCURATE, SUFFICIENT OR COMPLETE. IT SHALL BE THE CONTRACTOR'S RESPONSIBILITY TO DETERMINE THE ACTUAL LOCATION OF ALL SUCH FACILITIES, INCLUDING SERVICE CONNECTIONS TO UNDERGROUND UTILITIES. PRIOR TO CONSTRUCTION, THE CONTRACTOR SHALL NOTIFY THE UTILITY COMPANIES OF HIS OPERATIONAL PLANS AND SHALL OBTAIN FROM THE RESPECTIVE UTILITY COMPANIES DETAILED INFORMATION AND ASSISTANCE RELATIVE TO THE LOCATION OF THEIR FACILITIES AND THE WORKING SCHEDULE OF THE COMPANIES FOR REMOVAL OR ADJUSTMENT WHERE REQUIRED. IN THE EVENT AN UNEXPECTED UTILITY INTERFERENCE IS ENCOUNTERED DURING CONSTRUCTION, THE CONTRACTOR SHALL IMMEDIATELY NOTIFY THE UTILITY COMPANY OF JURISDICTION. THE ENGINEER SHALL ALSO BE IMMEDIATELY NOTIFIED. ANY SUCH MAINS AND SERVICES SHALL BE RESTORED TO SERVICE AT ONCE AND PAID FOR BY THE CONTRACTOR AT NO ADDITIONAL COST TO THE CONTRACT.

CALL J.U.L.I.E. FOR UTILITY INFORMATION AT 1-800-892-0123. CONTACT AIRPORT PERSONNEL FOR ASSISTANCE IN LOCATING AIRPORT CABLES.

NOTES:

- ALL TAXIWAY LIGHTS ARE TO BE LOCATED 10' FROM THE PAVEMENT EDGE, AND THE NEAR EDGE OF THE TAXIWAY SIGNS WILL BE LOCATED 15' FROM THE EDGE OF PAVEMENT.
- REFER TO THE LIGHTING STANDARD SHEET AND SPECIFICATION FOR DETAILS FOR THE STAKE AND BASE LIGHTS AND TAXIWAY SIGNS.
- LIGHTING CABLE WILL BE 1/C No. 8, 5 KV. TYPE C UNDERGROUND CABLE IN UNIT DUCT. CABLE BENDS WILL BE 3'-0" OR GREATER.
- LIGHTING CABLE SHALL BE BURIED AT A MINIMUM DEPTH OF 18 INCHES AND 12 FEET FROM THE PAVEMENT EDGE. THE SPACING OF MULTI CABLES IN THE SAME TRENCH SHALL BE SEPARATED BY 3 INCHES, CABLE TO CABLE. FOR ELECTRICAL TRENCH DETAILS REFER TO THE ELECTRICAL DETAIL SHEET.
- ALL PROPOSED LIGHTS AND SIGNS WILL BE TAGGED IN ACCORDANCE WITH LIGHT NUMBER SHOWN ON THE PLANS.
- IN AREAS WHERE THERE IS A CONGESTION OF EXISTING CABLES, THE PROPOSED CABLES WILL BE HAND-DUG IN PLACE. AT ALL OTHER LOCATIONS, THE CABLE MAY BE TRENCHED OR PLOWED INTO PLACE.
- THE REMOVED LIGHT FIXTURES AND ISOLATION TRANSFORMERS WILL BE TURNED OVER TO THE AIRPORT MANAGER. IF THE MANAGER DOES NOT WANT THE SALVAGED MATERIAL, THEN THE CONTRACTOR WILL DISPOSE OF THE MATERIALS. THE CONCRETE BASES AND METAL STAKES WILL BE DISPOSED OF OFF THE AIRPORT SITE BY THE CONTRACTOR.
- ALL PROPOSED TAXIWAY LIGHTS WILL BE TYPE L-861-T, WITH 30 WATT INCANDESCENT LAMP.
- ALL OF THE ABOVE LIGHTS WILL BE MANUFACTURED IN ACCORDANCE TO FAA SPECIFICATION AC NO. 150/5345-46B, LATEST EDITION.
- THE CONCRETE USED IN THE CONSTRUCTION OF THESE ITEMS SHALL BE IN ACCORDANCE WITH ITEM 610.
- PRIOR TO INSTALLING THE PROPOSED TAXIWAY LIGHTS, THE CONTRACTOR WILL APPLY AN OXIDE-INHIBITING, ANTI-SEIZING COMPOUND TO ALL SCREWS, NUTS, BREAKABLE COUPLING, AND ALL PLACES WHERE METAL COMES INTO CONTACT WITH METAL. THE ANTI-SEIZE COMPOUND WILL BE AS MANUFACTURED BY I.T.T. BRAND NAME "CONTAX" OR APPROVED EQUAL.
- ALL BASE PLATE MOUNTING BOLTS AND STAKE MOUNTING BOLTS SHALL BE STAINLESS STEEL.
- THE CONTRACTOR WILL LOCATE ALL BURIED CABLES PRIOR TO THE PLACEMENT OF NEW CABLES. IN AREAS OF MULTIPLE CABLES, THE PROPOSED CABLES SHALL BE PLACED BY HAND DIGGING.
- THE EXISTING TAXI GUIDANCE SIGNS (TO BE RELOCATED) WILL BE REMOVED, STORED, AND PREPARED FOR RELOCATION BY ADDING ANOTHER SIGN MODULE TO THE EXISTING SIGN AND CHANGING THE SIGN LEGENDS TO READ AS SHOWN ON SHEET 22. THE EXISTING SIGN BASES WILL BE REMOVED AND DISPOSED OF OFF THE AIRPORT SITE. NEW SIGN BASES WILL BE CONSTRUCTED IN ACCORDANCE WITH THE DETAILS SHOWN ON THE ELECTRICAL STANDARD SHEET. THE STORED SIGNS WILL BE INSTALLED ON THE NEW BASES. ANY DAMAGE TO THE SIGNS WILL BE REPAIRED OR REPLACED AT THE CONTRACTOR'S OWN EXPENSE. PAYMENT WILL BE MADE UNDER ITEM AR125964, RELOCATE TAXI GUIDANCE SIGN.
- THE TWO EXISTING ONE MODULE TAXI GUIDANCE SIGNS LOCATED ON TAXIWAY "A1" WILL BE REMOVED AND TURNED OVER TO THE AIRPORT MANAGER. IF THE AIRPORT MANAGER DOESN'T WANT THEM, THEN THE CONTRACTOR WILL DISPOSE OF THEM OFF THE AIRPORT SITE. THE EXISTING CONCRETE BASES WILL BE REMOVED AND DISPOSED OF OFF THE AIRPORT SITE. IF THE EXISTING SIGN LOCATION WILL NOT BE USED BY A PROPOSED TAXI GUIDANCE SIGN, THEN THE CONTRACTOR WILL CONNECT THE EXISTING CABLES BACK TOGETHER, BURY THEM, PLACE DIRT IN THE HOLE LEFT FROM THE REMOVAL OF THE SIGN BASE, SEED AND MULCH THE DISTURBED AREA. ALL THIS WORK WILL BE CONSIDERED AS AN INCIDENTAL ITEM TO THE REMOVAL TO THE TAXI GUIDANCE SIGN AND NO ADDITIONAL COMPENSATION WILL BE ALLOWED. PAYMENT WILL BE MADE UNDER ITEM AR125904, REMOVE TAXI GUIDANCE SIGN.

THE LOCATION OF UNDERGROUND UTILITIES AS INDICATED ON THE PLANS HAS BEEN OBTAINED FROM EXISTING RECORDS. NEITHER THE OWNER OR THE ENGINEER ASSUMES ANY RESPONSIBILITY WHATSOEVER IN RESPECT TO THE ACCURACY OR SUFFICIENCY OF THE INFORMATION AND THERE IS NO GUARANTEE, EITHER EXPRESSED OR IMPLIED, THAT THE CONDITIONS INDICATED ARE REPRESENTATIVES OF THOSE TO BE ENCOUNTERED IN THE CONSTRUCTION.



LEGEND

	PROPOSED PAVEMENT		PROPOSED ELECTRICAL DUCT/DUCT EXTENSION
	EXISTING PAVEMENT		PROPOSED STAKE MOUNTED TAXIWAY LIGHT
	EXISTING LIGHTING CABLES		PROPOSED BASE MOUNTED TAXIWAY LIGHT
	EXISTING BASE MOUNTED RUNWAY LIGHT		PROPOSED TAXIWAY GUIDANCE SIGN
	EXISTING STAKE MOUNTED RUNWAY LIGHT		PROPOSED SAFETY SWITCH w/ SUPPORT STRUCTURE
	EXISTING ELECTRICAL SPLICE CAN		EXISTING R.E.I.L. (RELOCATED)
	EXISTING VASI		EXISTING LIGHTING CABLES (TO BE ABANDONED OR REMOVED)
	EXISTING THRESHOLD LIGHTS		EXISTING R.E.I.L. (TO BE RELOCATED)
	PROPOSED 1/C #8 5KV FAA L-824 CABLE IN UD		
	PROPOSED 2/C #8 XLP-USE 600V CABLE IN UD		
	PROPOSED REIL POWER & CONTROL CABLES		

GUIDANCE SIGN NOTES:
SEE PROPOSED ELECTRICAL SCHEDULE FOR TAXI GUIDANCE SIGN PANEL DATA & LOCATIONS, PROPOSED TAG IDENTIFICATION, PROPOSED LIGHT LOCATIONS, AND ELECTRICAL EQUIPMENT LOCATIONS.

QUANTITIES

ITEM No.	DESCRIPTION	UNIT	QUANTITY	AS BUILT QUANTITY
AR108158	1/C #8 5 KV UG CABLE IN UD	L.F.	5,226	
AR110502	2-WAY CONCRETE ENCASED DUCT	L.F.	41	
AR125410	MIL-STAKE MOUNTED	EACH	25	
AR125415	MIL-BASE MOUNTED	EACH	6	
AR125443	TAXI GUIDANCE SIGN, 3 CHARACTER	EACH	4	
AR125444	TAXI GUIDANCE SIGN, 4 CHARACTER	EACH	1	
AR125901	REMOVE STAKE MOUNTED LIGHT	EACH	7	
AR125904	REMOVE TAXI GUIDANCE SIGN	EACH	2	
AR125964	RELOCATE TAXI GUIDANCE SIGN	EACH	2	
AR125967	RELOCATE REILS	PAIR	1	

APR 27, 2007 7:42 AM BAK
C:\AIRPORTS\CARMA\801-071\TY\AIRPORT\SHEETS\R-141ELE.DWG - STA. 16+50 TO STA. 21+50

BY	
REVISION	
DATE	
CARMI MUNICIPAL AIRPORT CARMI, ILLINOIS	
A.I.P. PROJ.: 3-17-0109-B7	
IL PROJ.: CUL-3683	
I&L Project No. 801-071XXD_0800 Revision: R-141ELE.DWG Scale: 1" = 30' Date: 11/15/06	LAYOUT SEP 11/15/06 DRAWN CCC 11/15/06 REVIEWED CAH 03/27/07
HANSON	
Hanson Professional Services Inc. 1525 South Sixth Street Springfield, Illinois 62703-2886 Offices Nationwide	
EXTEND PARTIAL PARALLEL TAXIWAY	PROPOSED ELECTRICAL PLAN STA. 16+50 TO STA. 21+50
19	
19 of 55 sheets	