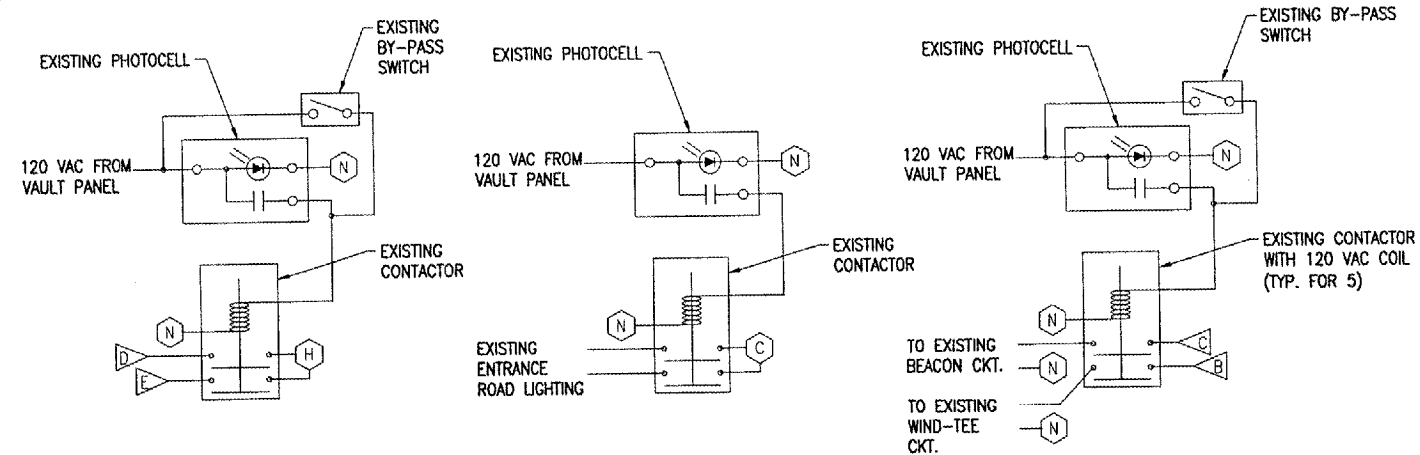


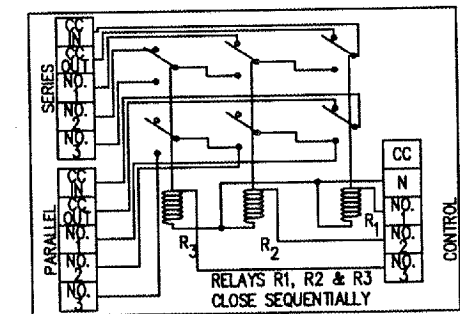
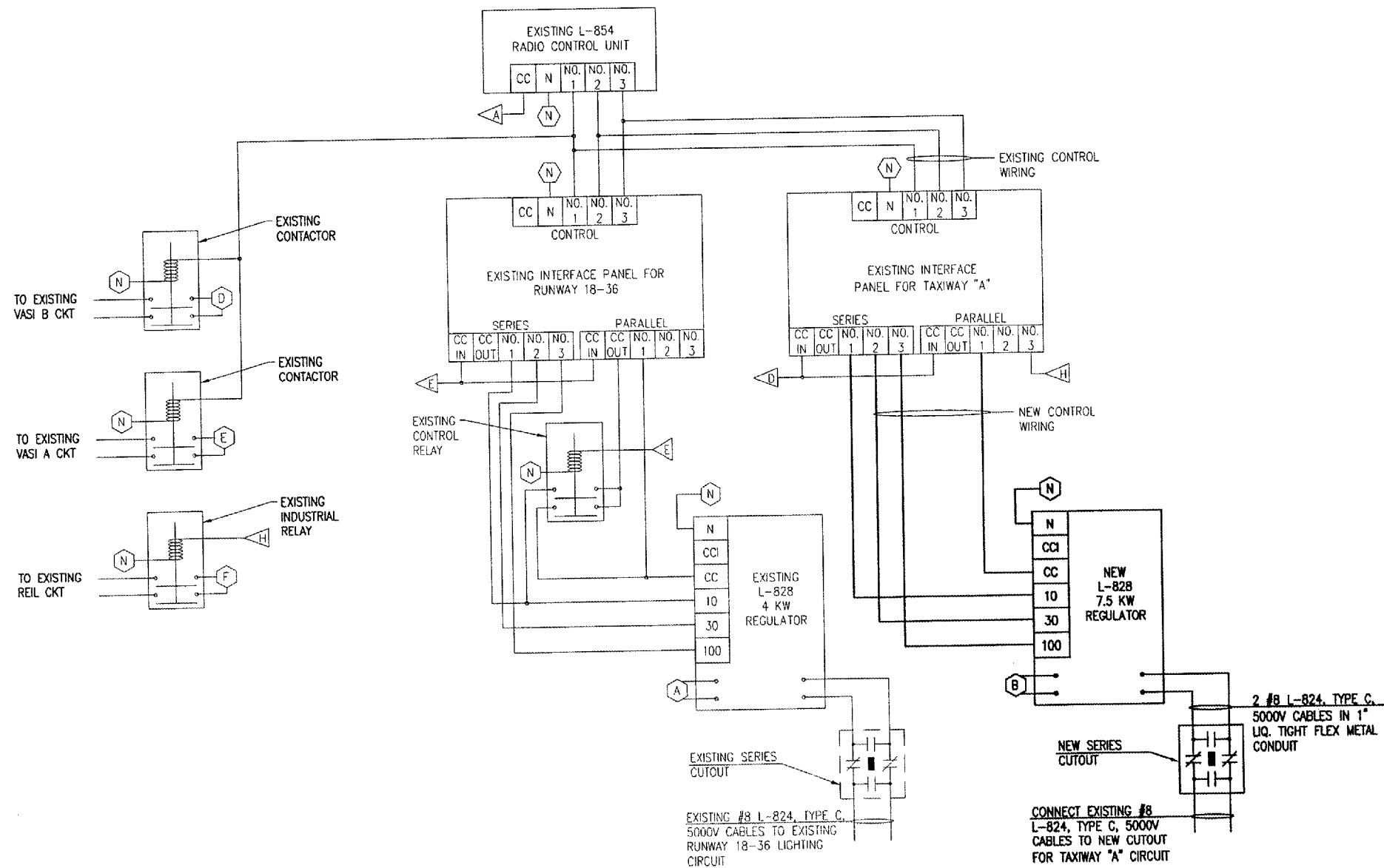
NOTES

1. ALL ELECTRICAL EQUIPMENT WILL BE WIRED IN ACCORDANCE WITH THE SCHEMATIC WIRING DIAGRAM AND ALL APPLICABLE CODES.
2. ALL CONTROL CABLE WILL BE NO. 12 AWG COPPER, 600 VOLT CABLE.
3. ALL ELECTRICAL EQUIPMENT WILL BE PROPERLY LABELED AND ALL ELECTRICAL CABLES WILL BE TAGGED.
4. ALL ELECTRICAL CABLES INSIDE THE VAULT WILL BE IN CONDUIT OR DUCT.
5. THE RUNWAY/TAXIWAY CIRCUITS WILL BE CONTROLLED BY THE L-854 RADIO CONTROL UNIT IN THE FOLLOWING MANNER:  
 3 CLICKS - 10% BRIGHTNESS  
 5 CLICKS - 30% BRIGHTNESS  
 7 CLICKS - 100% BRIGHTNESS
6. RADIO CONTROL UNIT, PHOTOCELL, CONTROL RELAYS, CONTACTORS, CCR FOR RWY 18-36 AND THE RESPECTIVE INTERFACE PANEL, & CUTOUT ARE EXISTING. INTERFACE PANEL FOR TAXIWAY CCR IS EXISTING.
7. 7.5 KW CONSTANT CURRENT REGULATOR FOR TAXIWAY AND ASSOCIATED CUTOUT, 240 VAC POWER WIRING, CONTROL WIRING, & 5000V L-824 CABLES ARE NEW AND SHALL BE FURNISHED & INSTALLED UNDER ITEM AR109200.
8. EQUIPMENT GROUND WIRES SHALL BE INCLUDED WITH EACH NEW BRANCH/FEEDER CIRCUIT & THE NEW CONTROL CIRCUIT, TO THE CONSTANT CURRENT REGULATOR.



SHEET LEGEND

- (A) FEED FROM 30A, 2P FUSIBLE SAFETY SWITCH (RWY 18-36 CCR)
- (B) VAULT PANEL 240 VAC CKT (TAXIWAY "A" CCR)
- (C) VAULT PANEL 240 VAC CKT (ENTRANCE ROAD LIGHTS)
- (D) VAULT PANEL 240 VAC CKT (VASI B)
- (E) VAULT PANEL 240 VAC CKT (VASI A)
- (F) VAULT PANEL 240 VAC CKT (REILS)
- (G) RESERVED
- (H) VAULT PANEL 120/240 VAC CKT (CONTROL FOR CCR'S)
- (N) N DESIGNATES NEUTRAL FROM THE RESPECTIVE PANEL THAT POWERS THE DEVICE. FOR CONTROL CIRCUIT INPUTS TO CCR'S N SHALL BE FROM THE RESPECTIVE INTERFACE PANEL CIRCUIT NEUTRAL CONNECTION.
- (A) VAULT PANEL 120 VAC CKT (L-854 RADIO)
- (B) VAULT PANEL 120 VAC CKT (WIND-TEE)
- (C) VAULT PANEL 120 VAC CKT (BEACON)
- (D) 120 VAC POWER FOR TAXIWAY INTERFACE PANEL
- (E) 120 VAC POWER FOR RUNWAY INTERFACE PANEL
- (H) PARALLEL NO. 3 OUTPUT FROM INTERFACE PANEL FOR TAXIWAY CCR



TYP. INTERFACE PANEL DETAIL

AIRFIELD LIGHTING SCHEMATIC WIRING DIAGRAM

BY	
REVISION	
DATE	
<b>CARMI MUNICIPAL AIRPORT CARMI, ILLINOIS</b>	
A.I.P. PROJ.: 3-17-0109-87	
ILL. PROJ.: CUL-3683	
Project No.	801-07TAXI 0800
Filename	E-603.DWG
Scale	NONE
Date	02/05/07
LAYOUT	KNL 02/05/07
DRAWN	MY 02/05/07
REVIEWED	CAH 03/27/07
<b>HANSON</b>	
Hanson Professional Services Inc. 1525 South Sixth Street Springfield, Illinois 62703-2886 Offices Nationwide	
EXTEND PARTIAL PARALLEL TAXIWAY AIRFIELD LIGHTING WIRING SCHEMATIC	
<b>31</b>	
31 of 55 sheets	