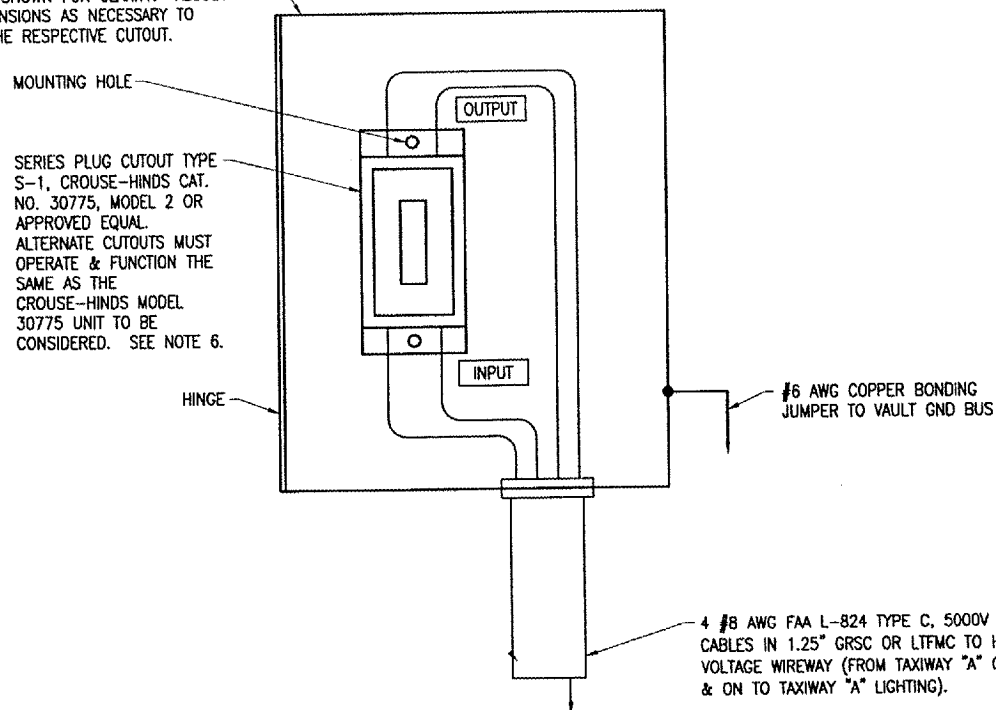
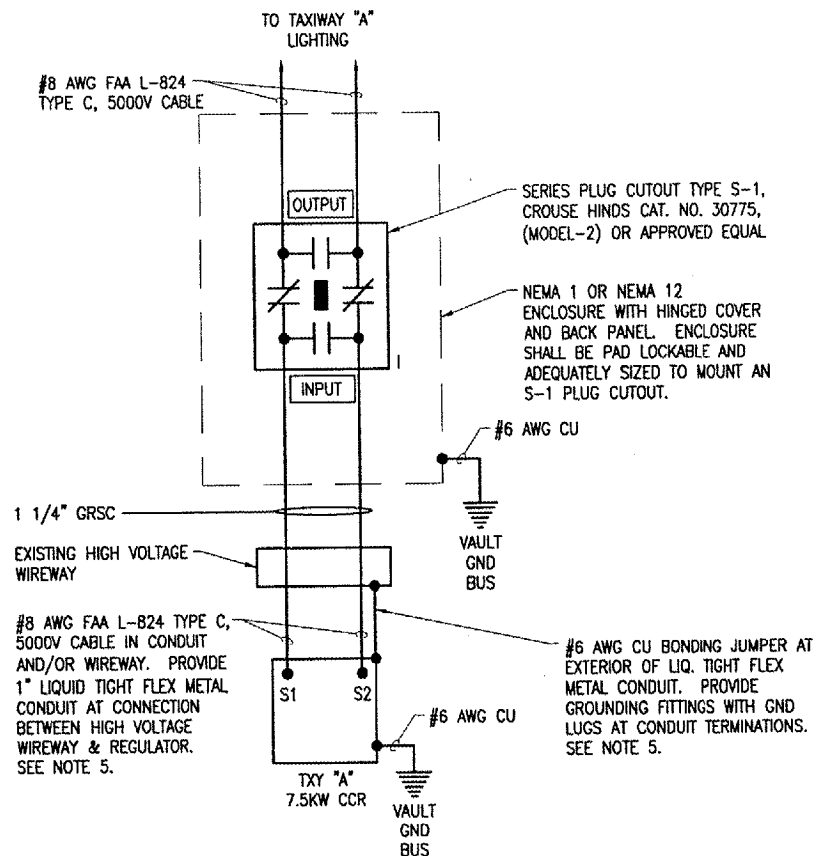


14"H x 12"W x 8"D (APPROXIMATE DIMENSIONS)
NEMA 1 OR NEMA 12 ENCLOSURE WITH HINGED
COVER & BACK PANEL. NOTE FRONT DOOR OF
ENCLOSURE NOT SHOWN FOR CLARITY. ADJUST
ENCLOSURE DIMENSIONS AS NECESSARY TO
ACCOMMODATE THE RESPECTIVE CUTOUT.



SERIES PLUG CUTOUT MOUNTING DETAIL

NOT TO SCALE



HIGH VOLTAGE WIRING SCHEMATIC

NOTES

1. PROVIDE PHENOLIC ENGRAVED LEGEND PLATES FOR EACH CONSTANT CURRENT REGULATOR (EXISTING & NEW) NOTING THE RUNWAY AND/OR TAXIWAY SERVED.
2. PLUG CUTOUT CABINET SHALL BE FURNISHED WITH A PHENOLIC ENGRAVED LEGEND PLATE THAT IDENTIFIES THE RESPECTIVE RUNWAY/TAXIWAY CIRCUIT OR REGULATOR.
3. PROVIDE PHENOLIC ENGRAVED LEGEND PLATES FOR CUTOUT TO IDENTIFY THE RESPECTIVE REGULATOR OUTPUT CONNECTION AND THE RESPECTIVE CIRCUIT LOAD CONNECTION.
4. BOND PLUG CUTOUT CABINET TO THE VAULT GROUND BUS WITH A #6 AWG COPPER BONDING JUMPER.
5. LIQUID TIGHT FLEXIBLE METAL CONDUIT AND ASSOCIATED FITTINGS SHALL BE U.L. LISTED TO MEET THE REQUIREMENTS OF NEC 350.6, SUITABLE FOR GROUNDING AND SUNLIGHT RESISTANT. LIQUID TIGHT FLEXIBLE METAL CONDUIT THAT IS USED FOR FLEXIBILITY (INCLUDING CONNECTIONS TO CCR'S & TRANSFORMERS) SHALL REQUIRE AN EXTERNAL BONDING JUMPER OR INTERNAL EQUIPMENT GROUNDING CONDUCTOR PER NEC 350.60. EXTERNAL BONDING JUMPERS USED WITH CCR INSTALLATIONS SHALL BE #6 AWG COPPER (MINIMUM). INTERNAL EQUIPMENT GROUNDING CONDUCTORS USED WITH CCR OUTPUT SERIES CIRCUIT WIRING SHALL BE #8 AWG COPPER (MINIMUM). DO NOT INSTALL LIQUID TIGHT FLEXIBLE METAL CONDUIT THAT IS NOT U.L. LISTED.
6. CROUSE-HINDS CAT. NO. 30771, (MODEL-3) SERIES PLUG CUTOUTS ARE NOT ACCEPTABLE, BECAUSE THE HANDLE IS NOT REMOVABLE. OTHER CUTOUTS THAT DO NOT FUNCTION THE SAME AS THE CROUSE-HINDS CAT. NO. 30775 (MODEL-2) ARE NOT ACCEPTABLE.
7. MAINTAIN SEPARATION OF HIGH VOLTAGE AND LOW VOLTAGE CIRCUITS. HIGH VOLTAGE AND LOW VOLTAGE CIRCUITS SHALL NOT BE INSTALLED IN THE SAME WIREWAY, CONDUIT, OR RACEWAY. COORDINATE HIGH VOLTAGE WIRING ENTRIES INTO THE CCR HIGH VOLTAGE SECTION. COORDINATE LOW VOLTAGE WIRING ENTRIES INTO THE LOW VOLTAGE SECTION.

LEGEND

- * DENOTES PLUG CUTOUT WITH PLUG INSERTED
- *P* DENOTES PLUG CUTOUT WITH PLUG PULLED
- *CCR* DENOTES CONSTANT CURRENT REGULATOR

LEGEND PLATE SCHEDULE	
DEVICE	LEGEND PLATE LABEL
RUNWAY 18/36 CCR	RUNWAY 18/36
TAXIWAY A CCR	TAXIWAY A
CUTOUT ENCLOSURE FOR TAXIWAY A CCR	TAXIWAY A
CUTOUT LINE SIDE CONNECTION	INPUT
CUTOUT LOAD SIDE CONNECTION	OUTPUT
HIGH VOLTAGE WIREWAY	HIGH VOLTAGE
LOW VOLTAGE WIREWAY	LOW VOLTAGE
SAFETY SWITCH FOR RWY 36 REILS	REIL DISCONNECT FED FROM VAULT

NOTES
ALL LEGEND PLATES SHALL BE ENGRAVED PHENOLIC OR PLASTIC MATERIAL, BLACK LETTERS ON A WHITE BACKGROUND.

BY	REVISION	DATE

CARMi MUNICIPAL AIRPORT
CARMi, ILLINOIS

A.I.P. PROJ.: 3-17-0109-B7

IL PROJ.: CUL-3683

HE Project No.	801-07TXD 0800
Revision	E-604.DWG
Scale	NONE
Date	02/05/07
LAYOUT	KNL 02/05/07
DRAWN	MV 02/05/07
REVIEWED	CAH 03/27/07



EXTEND PARTIAL
PARALLEL TAXIWAY

HIGH VOLTAGE
WIRING SCHEMATIC