

DATE	REVISION



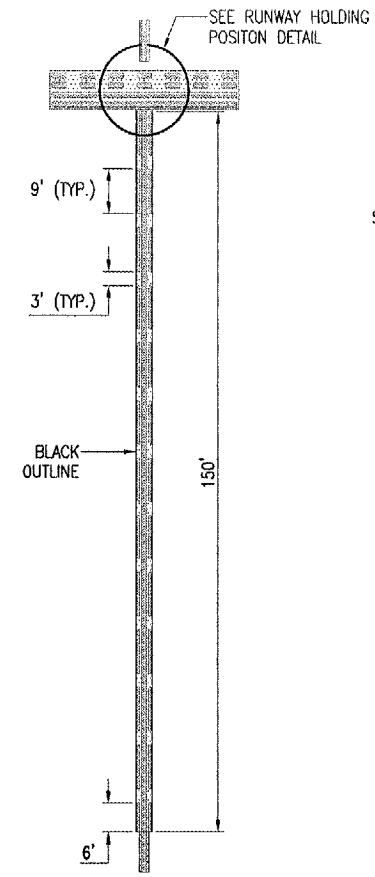
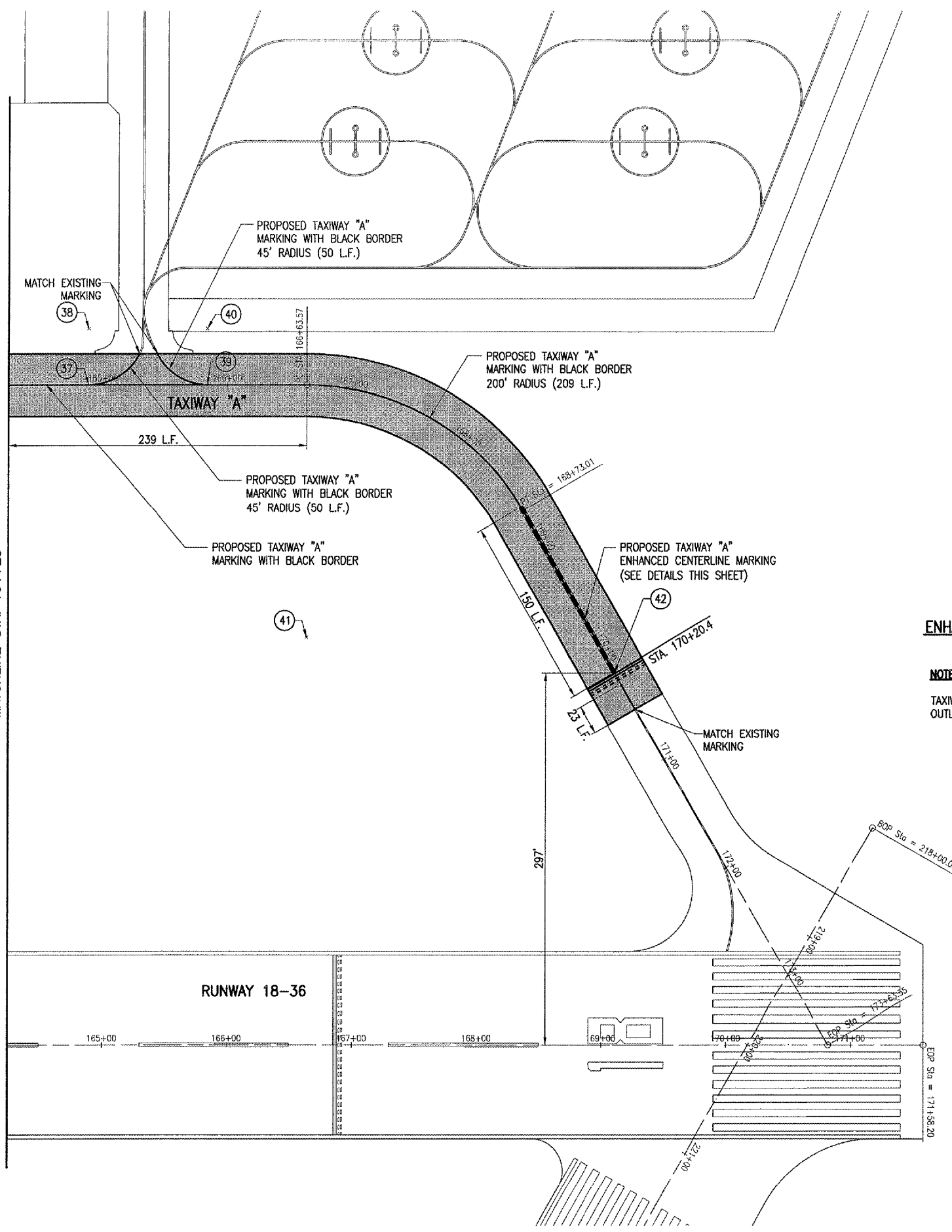
DECATUR, ILLINOIS
A.I.P. PROJ.: 3-17-0033-XX
IL PROJ.: DEC-3799

HEL Project No. 07A01690_0802	Scale	04/18/08
Drawn R-15.MRK.DWG	Scale	04/16/08
Date	Scale	04/17/08
LAYOUT	MLH	04/16/08
DRAWN	MLH	04/16/08
REVIEWED	JDW	04/17/08



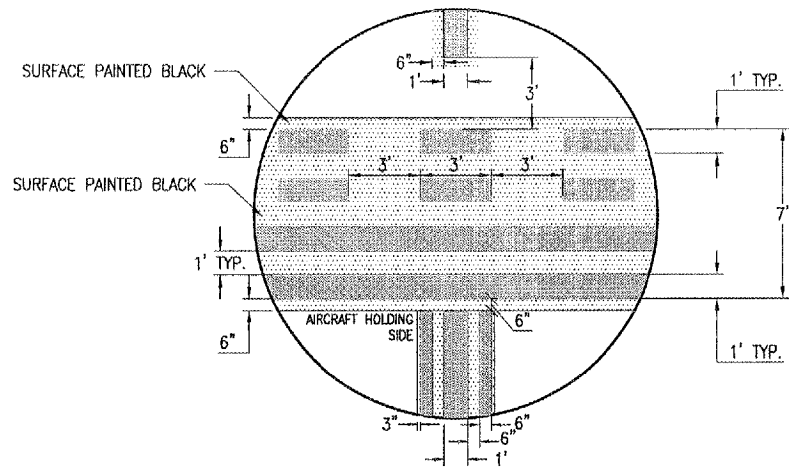
Hanson Professional Services Inc.
1525 South Sixth Street
Springfield, Illinois 62762-2886
Chicago National

RECONSTRUCT TAXIWAY "A" AND ADJACENT GA APRON
PROPOSED MARKING PLAN
STA. 164+25 TO STA. 170+54



ENHANCED TAXIWAY CENTERLINE MARKING DETAIL
"NOT TO SCALE"

NOTE:
TAXIWAY CENTERLINE MARKINGS SHALL BE YELLOW IN COLOR AND OUTLINED IN BLACK.



RUNWAY HOLDING POSITION DETAIL
"NOT TO SCALE"

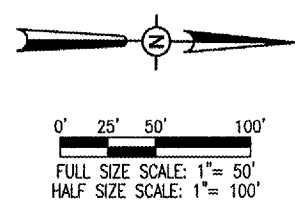
NOTE:
THE RUNWAY HOLDING POSITION MARKING SHALL BE YELLOW IN COLOR AND OUTLINED IN BLACK.

COORDINATE DATA - TAXIWAY "A"

NO.	STATION	OFFSET	NORTHING	EASTING	DESCRIPTION
1	153+67.65	0.0'	1154818.8135	831816.4805	BEGIN RADIUS
2	153+67.65	50.0' LT.	1154818.3564	831766.4825	CENTER RADIUS
3	154+67.27	0.0'	1154918.4496	831815.5524	BEGIN RADIUS
4	154+67.62	50.0' LT.	1154918.3349	831765.5525	CENTER RADIUS
5	158+13.68	0.0'	1155264.8409	831812.3260	BEGIN RADIUS
6	158+13.33	50.0' LT.	1155264.0294	831762.3326	CENTER RADIUS
7	158+61.72	37.4' LT.	1155312.5323	831774.4763	END RADIUS
8	159+16.41	0.0'	1155367.5652	831811.3692	BEGIN RADIUS
9	159+16.67	50.0' LT.	1155367.3580	831761.3697	CENTER RADIUS
10	158+68.28	62.6' LT.	1155318.8553	831749.2254	END RADIUS
11	158+89.44	144.2' LT.	1155339.2608	831667.4551	BEGIN RADIUS
12	158+40.57	156.9' LT.	1155290.2745	831655.1833	CENTER RADIUS
13	158+40.56	207.4' LT.	1155289.7872	831604.6856	END RADIUS
14	158+08.89	207.6' LT.	1155258.1234	831604.7935	BEGIN RADIUS
15	158+04.60	257.4' LT.	1155253.3656	831555.0204	CENTER RADIUS
16	158+54.60	257.4' LT.	1155303.3636	831554.5780	END RADIUS
17	159+04.60	257.4' LT.	1155353.3613	831554.0953	CENTER RADIUS
18	159+04.60	207.4' LT.	1155353.8238	831604.0932	BEGIN RADIUS
19	158+96.05	169.6' LT.	1155345.6251	831641.9513	BEGIN RADIUS
20	159+44.92	156.9' LT.	1155394.6126	831654.2181	CENTER RADIUS
21	159+44.92	207.4' LT.	1155394.1486	831603.7202	END RADIUS
22	159+35.96	207.4' LT.	1155385.1817	831603.8028	BEGIN RADIUS
23	159+35.96	257.4' LT.	1155384.7238	831553.8049	CENTER RADIUS
24	159+85.96	257.4' LT.	1155434.7215	831553.3223	END RADIUS
25	160+35.96	257.4' LT.	1155484.7195	831552.8802	CENTER RADIUS
26	160+35.96	207.4' LT.	1155485.1821	831602.8780	BEGIN RADIUS
27	161+62.25	207.4' LT.	1155611.4663	831601.7098	BEGIN RADIUS
28	161+62.24	157.4' LT.	1155611.9242	831651.7077	CENTER RADIUS
29	161+98.35	192.0' LT.	1155647.7111	831616.7892	END RADIUS
30	162+64.95	0.0'	1155716.0900	831808.1230	BEGIN RADIUS
31	162+64.95	50.0' LT.	1155715.6254	831758.1257	CENTER RADIUS
32	163+14.95	50.4' LT.	1155765.6186	831757.3037	BEGIN/END RADIUS
33	163+64.95	0.0'	1155816.0825	831807.1916	BEGIN RADIUS
34	163+64.95	50.0' LT.	1155815.6335	831757.1786	CENTER RADIUS
35	162+64.95	50.4' LT.	1155715.6208	831757.7653	CENTER RADIUS
36	163+03.64	82.0' LT.	1155754.0215	831725.7436	END RADIUS
37	164+88.60	0.0'	1155939.7338	831806.0399	BEGIN RADIUS
38	164+88.60	45.0' LT.	1155939.3145	831761.0419	CENTER RADIUS
39	165+83.81	0.0'	1156034.9373	831805.1532	BEGIN RADIUS
40	165+83.81	45.0' LT.	1156034.5156	831760.1551	CENTER RADIUS
41	166+63.57	200.0' LT.	1156116.5563	832004.4016	CENTER RADIUS
42	170+20.39	0.0'	1156363.6976	832029.7349	HOLDING POSITION

LEGEND

- EXISTING PAVEMENT
- EXISTING BUILDING
- PROPOSED BITUMINOUS PAVEMENT
- EXISTING PAVEMENT MARKING
- PROPOSED PAVEMENT MARKING



APR 17, 2008 4:53 PM HARR01115
I:\AIRPORTS\DECATUR\07A0169\CADD\AIRPORT\SHR015.MRK.DWG - 164+25 TO 170+54