

EAST-WEST TXY CCR SHALL BE RELOCATED AND INSTALLED ABOVE THE RWY 1/19 CCR.

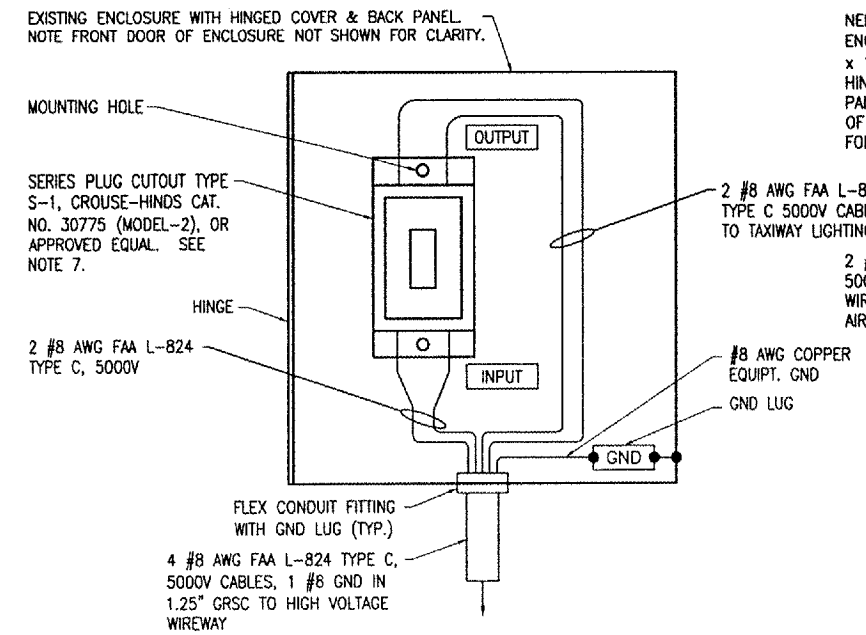
**HIGH VOLTAGE WIRING SCHEMATIC**

EXISTING TAXIWAY A CCR CIRCUIT NOT SHOWN

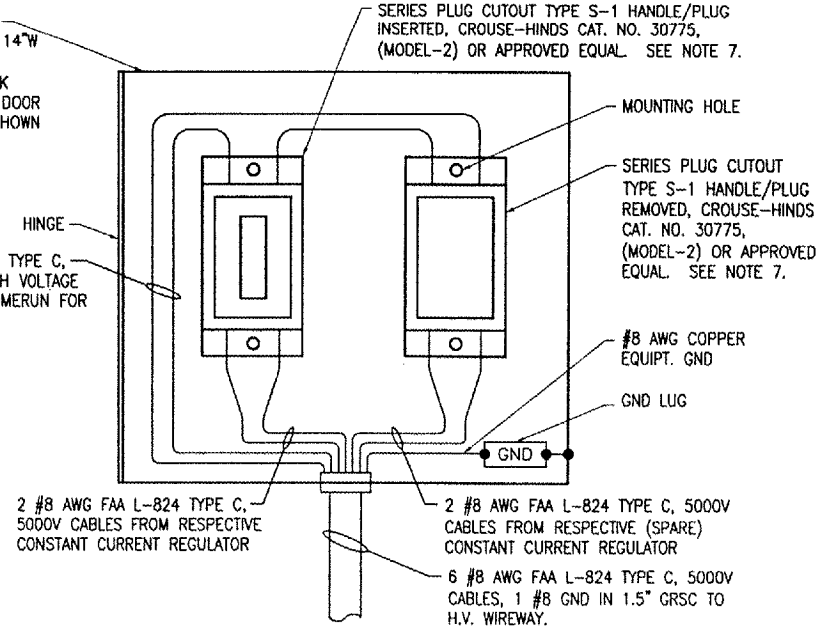
- LEGEND**
- "I" DENOTES PLUG CUTOUT WITH PLUG INSERTED
  - "P" DENOTES PLUG CUTOUT WITH PLUG PULLED
  - "CCR" DENOTES CONSTANT CURRENT REGULATOR

**NOTES**

1. PROVIDE PHENOLIC ENGRAVED LEGEND PLATES FOR EACH CONSTANT CURRENT REGULATOR NOTING THE REGULATOR DESIGNATION AND THE RUNWAY OR TAXIWAY SERVED.
2. EACH PLUG CUTOUT CABINET SHALL BE FURNISHED WITH A PHENOLIC ENGRAVED LEGEND PLATE THAT IDENTIFIES THE RESPECTIVE CIRCUIT OR REGULATOR. INCLUDE AN ADDITIONAL LEGEND PLATE LABELED "CAUTION OPERATE CUTOUTS WITH CCR SHUT OFF". FURNISH & INSTALL A WARNING LABEL FOR CUTOUT ENCLOSURE TO WARN PERSONS OF POTENTIAL ARC FLASH HAZARDS, PER THE REQUIREMENTS OF NEC 110.16 "FLASH PROTECTION".
3. PROVIDE PHENOLIC ENGRAVED LEGEND PLATES FOR EACH CUTOUT TO IDENTIFY THE RESPECTIVE CUTOUT INPUT CONNECTION AND THE RESPECTIVE CUTOUT OUTPUT CONNECTION.
4. PROVIDE ADEQUATE WORKING SPACE IN FRONT OF EACH CUTOUT ENCLOSURE TO MEET NEC CLEARANCE REQUIREMENTS.
5. PROVIDE WARNING SIGN ON VAULT DOOR LABELED "DANGER - HIGH VOLTAGE - KEEP OUT" PER THE REQUIREMENTS OF NEC 110.34 (C).
6. LIQUID TIGHT FLEXIBLE METAL CONDUIT AND ASSOCIATED FITTINGS SHALL BE U.L. LISTED TO MEET THE REQUIREMENTS OF NEC 350.6, SUITABLE FOR GROUNDING AND SUNLIGHT RESISTANT. LIQUID TIGHT FLEXIBLE METAL CONDUIT THAT IS USED FOR FLEXIBILITY (INCLUDING CONNECTIONS TO CCR'S & TRANSFORMERS) SHALL REQUIRE AN EXTERNAL BONDING JUMPER OR INTERNAL EQUIPMENT GROUNDING CONDUCTOR PER NEC 350.60. EXTERNAL BONDING JUMPERS USED WITH CCR INSTALLATIONS SHALL BE #6 AWG COPPER (MINIMUM). DO NOT INSTALL LIQUID TIGHT FLEXIBLE METAL CONDUIT THAT IS NOT UL LISTED.
7. CROUSE-HINDS CAT. NO. 30771, (MODEL-3) SERIES PLUG CUTOUTS ARE NOT ACCEPTABLE, BECAUSE THE HANDLE IS NOT REMOVABLE. OTHER CUTOUTS THAT DO NOT FUNCTION THE SAME AS CROUSE-HINDS CAT. NO. 30775 (MODEL-2) ARE NOT ACCEPTABLE.
8. HIGH VOLTAGE & LOW VOLTAGE CIRCUITS SHALL NOT BE INSTALLED IN THE SAME WIREWAY.
9. BOND ALL REGULATORS TO THE RESPECTIVE VAULT GROUND BUS WITH A DEDICATED #6 AWG BONDING JUMPER FOR EACH REGULATOR.



**INDIVIDUAL SERIES PLUG CUTOUT MOUNTING DETAIL**  
(TYPICAL FOR 2)



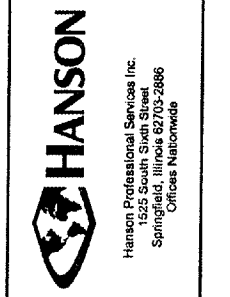
**SERIES PLUG CUTOUT MOUNTING DETAIL FOR RUNWAY 11/29 CIRCUIT**

BY	
REVISION	
DATE	

EFFINGHAM COUNTY  
MEMORIAL AIRPORT  
EFFINGHAM, ILLINOIS

A.I.P. PROJ.: 3-17-0040-B11  
I.L. PROJ.: 1H2-3761

PROJECT NO. 07A0143D 0800	DATE 02/12/08
DESIGNER E-603.DWG	LAYOUT KNL 01/28/08
SCALE NONE	DRAWN DMV 01/30/08
	REVIEWED CAH 02/12/08



WIDEN RUNWAY 11/29 AND REPLACE MRL'S

HIGH VOLTAGE WIRING SCHEMATIC

APR 09 2008 6:38 PM HAGLO00382  
L:\AIRPORTS\EFFINGHAM\07A0143D\CAD\SHEETS\E-603.DWG - Work