

VAULT LEGEND PLATE SCHEDULE	
DEVICE	LABEL
RUNWAY 11-29 CCR	RUNWAY 11-29
SPARE RUNWAY 11-29 CCR	SPARE FOR RUNWAY 11-29
CUTOUT ENCLOSURE FOR RUNWAY 11-29	RUNWAY 11-29 CUTOUTS
EACH CUTOUT ENCLOSURE (PROVIDE 4 LEGEND PLATES)	CAUTION OPERATE CUTOUTS WITH CCR SHUT OFF
NORMAL CUTOUT INPUT SIDE CONNECTION (RWY 11-29)	NORMAL CCR INPUT
SPARE CUTOUT INPUT SIDE CONNECTION (RWY 11-29)	SPARE CCR INPUT
EACH CUTOUT OUTPUT SIDE CONNECTION	OUTPUT
RADIO INTERFACE PANEL FOR RUNWAY 11-29	RUNWAY 11-29
RADIO INTERFACE PANEL FOR RUNWAY 1-19	RUNWAY 1-19
RADIO INTERFACE PANEL FOR EAST-WEST TAXIWAY	EAST-WEST TAXIWAY
NEW HIGH VOLTAGE WIREWAY (PROVIDE 1 LEGEND PLATE 1/2" HIGH BLACK LETTERS WHITE BACKGROUND)	HIGH VOLTAGE

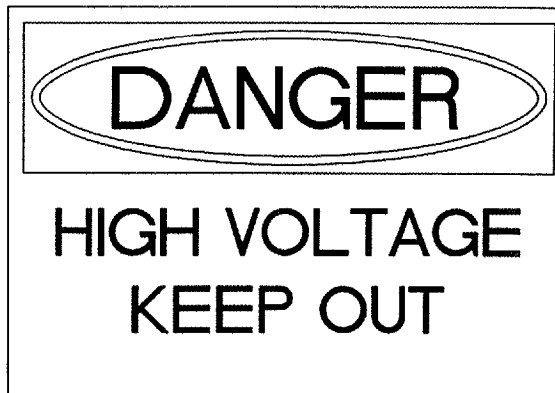
NOTE: LEGEND PLATES SHALL BE WEATHERPROOF ENGRAVED PLASTIC OR PHENOLIC MATERIAL, 1/4" HIGH BLACK LETTERS ON A WHITE BACKGROUND UNLESS NOTED OTHERWISE. SECURE WITH WEATHERPROOF ADHESIVE AND MACHINE SCREWS. FURNISH ADDITIONAL LEGEND PLATES WHERE REQUIRED BY CODE, FOR ADDITIONAL EQUIPMENT, AS DETAILED HEREIN ON THE PLANS, AND AS NOTED IN THE SPECIAL PROVISION SPECIFICATIONS.

FURNISH & INSTALL A WEATHERPROOF WARNING LABEL FOR EACH SAFETY SWITCH, PANELBOARD, LOAD CENTER, CUTOUT, & CONTROL PANEL TO WARN PERSONS OF POTENTIAL ELECTRIC ARC FLASH HAZARDS, PER THE REQUIREMENTS OF NEC 110.16 "FLASH PROTECTION". LABELS SHALL BE HAZARD COMMUNICATION SYSTEMS, LLC (190 OLD MILFORD RD., BOX 1174, MILFORD, PA 18337, PHONE: 1-877-748-0244) PART NO. H6010-9VWHBJ OR APPROVED EQUAL.

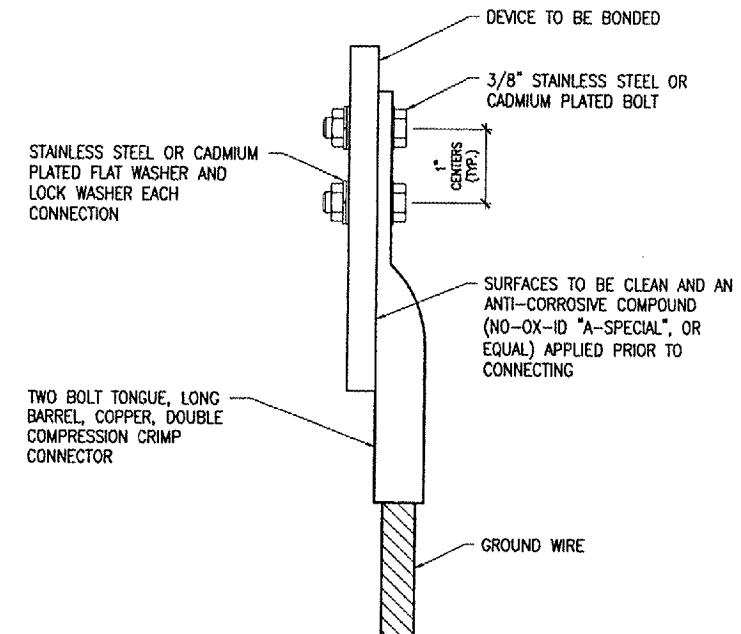
- DIRECTIONS TO TRANSFER RUNWAY 11-29 LIGHTING FROM NORMAL CCR TO SPARE CCR.
1. SHUT OFF INPUT POWER (CIRCUIT BREAKER) TO BOTH RWY 11-29 CCR'S & TURN CCR SELECTOR SWITCHES TO OFF.
 2. PULL CUTOUT HANDLE FROM NORMAL CCR UNIT & INSERT INTO SPARE CCR CUTOUT.
 3. TURN ON INPUT POWER (CIRCUIT BREAKER) TO SPARE RWY 11-29 CCR.
 4. GO TO CONTACTOR PANEL & TURN "RWY 11-29 CCR TRANSFER" SELECTOR SWITCH FROM "NORMAL" TO "SPARE" POSITION.
 5. TURN SELECTOR SWITCH ON SPARE CCR TO "REMOTE" POSITION.

PROVIDE PLACARD OR LEGEND PLATE FOR RUNWAY CONSTANT CURRENT REGULATOR PAIR AS NOTED ABOVE: LETTERING TO BE MIN. 1/4" HIGH, BLACK ON WHITE BACKGROUND. LOCATE PLACARD ABOVE CUTOUT ENCLOSURE.

PLACARD DETAIL



PROVIDE WARNING SIGN ON VAULT EXTERIOR DOORS LABELED "DANGER - HIGH VOLTAGE - KEEP OUT" PER THE REQUIREMENTS OF NEC 110.34 (C).



2 HOLE LONG BARREL COMPRESSION LUG TABLE			
WIRE SIZE	BURNDY CAT. NO.	THOMAS & BETTS CAT. NO.	PENN-UNION CAT. NO.
#6 AWG STRANDED	YA6C-2TC38	256-30695-1158	BBLU-6D-2TC38
#4 AWG STRANDED	YA4C-2TC38	256-30695-1159	BBLU-4D-2TC38
#2 AWG STRANDED	YA2C-2TC38	256-30695-1160	BBLU-2D-2TC38
#2 AWG SOLID	YA3C-2TC38	256-30695-1160	BBLU-3D-2TC38
#1/0 AWG STRANDED	YA25-2TC38	256-30695-1162	BBLU-1/0D-2TC38
#2/0 AWG STRANDED	YA26-2TC38	256-30695-1116	BBLU-2/0D-2TC38
#3/0 AWG STRANDED	YA27-2TC38	548168E	BBLU-3/0D-2TC38
#4/0 AWG STRANDED	YA28-2TC38	256-30695-1117	BBLU-4/0D-2TC38

NOTES

1. GROUND WIRE CONNECTIONS TO EQUIPMENT SHALL BE WITH 2 HOLE TONGUE LONG BARREL COMPRESSION LUGS BOLTED TO THE DEVICE OR WITH THE RESPECTIVE EQUIPT MANUFACTURER'S LUG OR TERMINAL WHERE APPLICABLE.
2. GROUNDING ELECTRODE CONDUCTORS, BONDING JUMPERS, & INDIVIDUAL GROUND WIRES SHALL NOT BE INSTALLED IN METAL CONDUIT. WHERE PLASTIC CONDUIT IS USED FOR INDIVIDUAL GROUND WIRES, DO NOT COMPLETELY ENIRCLE THE CONDUIT WITH FERROUS AND/OR MAGNETIC MATERIALS. WHERE METAL CLAMPS ARE INSTALLED USE NYLON BOLTS, NUTS, WASHERS, & SPACERS TO INTERRUPT A COMPLETE METALLIC PATH FROM ENCIRCLING THE CONDUIT.
3. ALL CONNECTIONS SHALL BE COATED WITH A CORROSION PREVENTATIVE COMPOUND (SANCHEM INC. NO-OX-ID "A-SPECIAL", BURNDY PENETROX E, OR EQUAL) BEFORE JOINING. ALL COPPER BUS BARS SHALL BE CLEANED PRIOR TO MAKING CONNECTIONS TO REMOVE SURFACE OXIDATION. CLEAN SURFACES, OF RESPECTIVE DEVICES TO BE BONDED, TO BARE METAL, PER NEC 250-12.

GROUNDING LUG CONNECTION DETAIL

DATE	REVISION	BY

EFFINGHAM COUNTY
MEMORIAL AIRPORT
EFFINGHAM, ILLINOIS

IL PROJ.: 1H2-3761 A.I.P. PROJ.: J-17-0040-811

HEI Project No. 07A0143D_0800	DATE 02/12/08	LAYOUT	KNL 02/05/08
Estimate E-501.DWG	Scale NONE	DRAWN	DNV 02/05/08
		REVIEWED	CAH 02/12/08



WIDEN RUNWAY 11/29
AND REPLACE MRL'S

LEGEND PLATE
SCHEDULE
& GROUNDING DETAILS