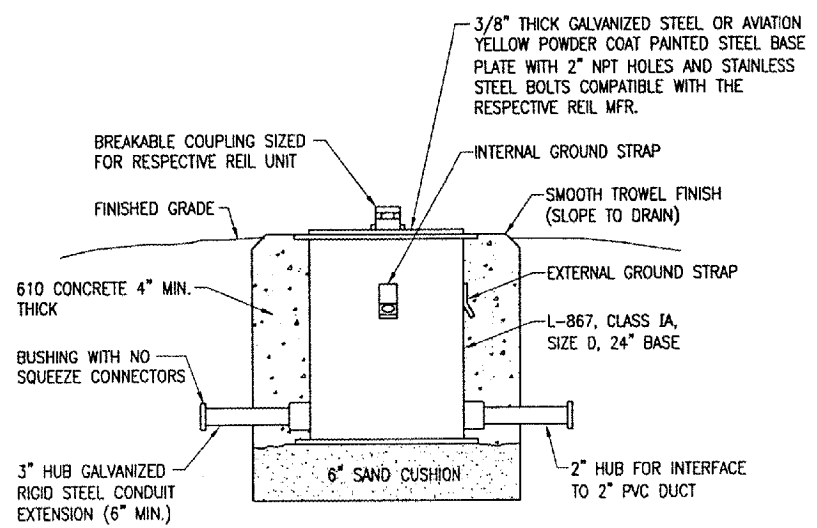
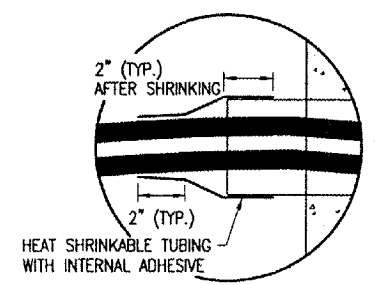


REIL INSTALLATION DETAIL
NOT TO SCALE



REIL BASE DETAIL
(NOT TO SCALE)

NOTE:
FOR THE PURPOSE OF ENHANCING SAFETY, EACH BASE MUST HAVE INSTALLED, BY THE MANUFACTURER, AN INTERNAL AND EXTERNAL GROUND STRAP THAT IS AVAILABLE FOR THE PURPOSE OF ATTACHING A GROUND LUG THAT IS CONNECTED TO AN EARTH GROUND OR A SAFETY GROUND CONDUCTOR INSTALLED WITH THE RESPECTIVE CIRCUIT. FOR AIRPORT PROJECTS RECEIVING FEDERAL FUNDS THIS REQUIREMENT IS MANDATORY PER FAA AC 150/5345-42F.



SHRINK TUBE DETAIL
(NOT TO SCALE)

REIL RELOCATION NOTES

1. THE EXISTING REILS ARE GODFREY ENGINEERING PART NO. GEA20-100F. THE MANUFACTURER IS NO LONGER IN BUSINESS. CONTRACTOR SHALL CONFIRM & RECORD EXISTING WIRING & CONNECTIONS PRIOR TO RELOCATING REIL UNITS. VERIFY INSTALLATION & WIRING REQUIREMENTS WITH THE RESPECTIVE REIL MANUFACTURER'S INSTRUCTIONS.
2. THE CONTRACTOR SHALL FURNISH AND INSTALL POWER AND CONTROL CABLES BETWEEN THE MASTER AND SLAVE REIL UNITS. CONTROL CABLES SHALL BE INSTALLED IN A SEPARATE DEDICATED CONDUIT BETWEEN THE REIL UNITS. THE SIZE, TYPE AND NUMBER OF CABLES TO BE INSTALLED BETWEEN THE REIL UNITS SHALL BE AS DETAILED HEREIN AND PER THE MANUFACTURER'S RECOMMENDATIONS. THE CABLE WILL BE TRENCHED AT A MINIMUM DEPTH OF 18". ALL POWER, CONTROL, & GROUNDING CONDUCTORS WILL BE INCIDENTAL TO ITEM AR125967 RELOCATE REILS.
3. ANY AND ALL TRENCHES AND DISTURBED AREAS WILL BE BACKFILLED AND RESTORED TO A SMOOTH GRADE AND SEEDED TO THE SATISFACTION OF THE ENGINEER. ALL TRENCH SETTLEMENT SHALL BE CORRECTED FOR A PERIOD OF ONE YEAR. RESTORATION, GRADING, AND SEEDING OF AREAS DISTURBED DURING THE REIL RELOCATION AND INSTALLATION OF THE PROPOSED CABLE WILL BE INCIDENTAL TO ITEM AR125967 RELOCATE REILS.
4. REILS SHALL BE AIMED AT ANGLE 10 DEGREES VERTICALLY AND TOED OUT 15 DEGREES FROM THE LINE PARALLEL TO THE RUNWAY CENTERLINE.
5. RELOCATION OF REILS SHALL BE PAID FOR UNDER ITEM AR125967 RELOCATE REILS - PER PAIR.

DATE	REVISION	BY

EFFINGHAM COUNTY
MEMORIAL AIRPORT
EFFINGHAM, ILLINOIS

IL PROJ.: 1H2-3761 A.I.P. PROJ.: 3-17-0040-B11

REVISION	DATE	BY	DATE	BY
LAYOUT	02/12/08	KNL	02/03/08	
DRAWN	02/12/08	DMV	02/03/08	
REVIEWED	02/12/08	CAH	02/12/08	

HANSON
Hanson Professional Services Inc.
1525 South Sixth Street
Springfield, Illinois 62703-2886
Offices Nationwide

WIDEN RUNWAY 11/29
AND REPLACE MRL'S
PROPOSED
REIL
DETAILS

APR 09, 2008 6:41 PM HAGL000382
I:\AIRPORTS\EFFINGHAM\07A0143\CAD\SHEETS\R-545ELE.DWG - Layout1