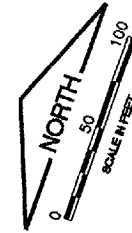
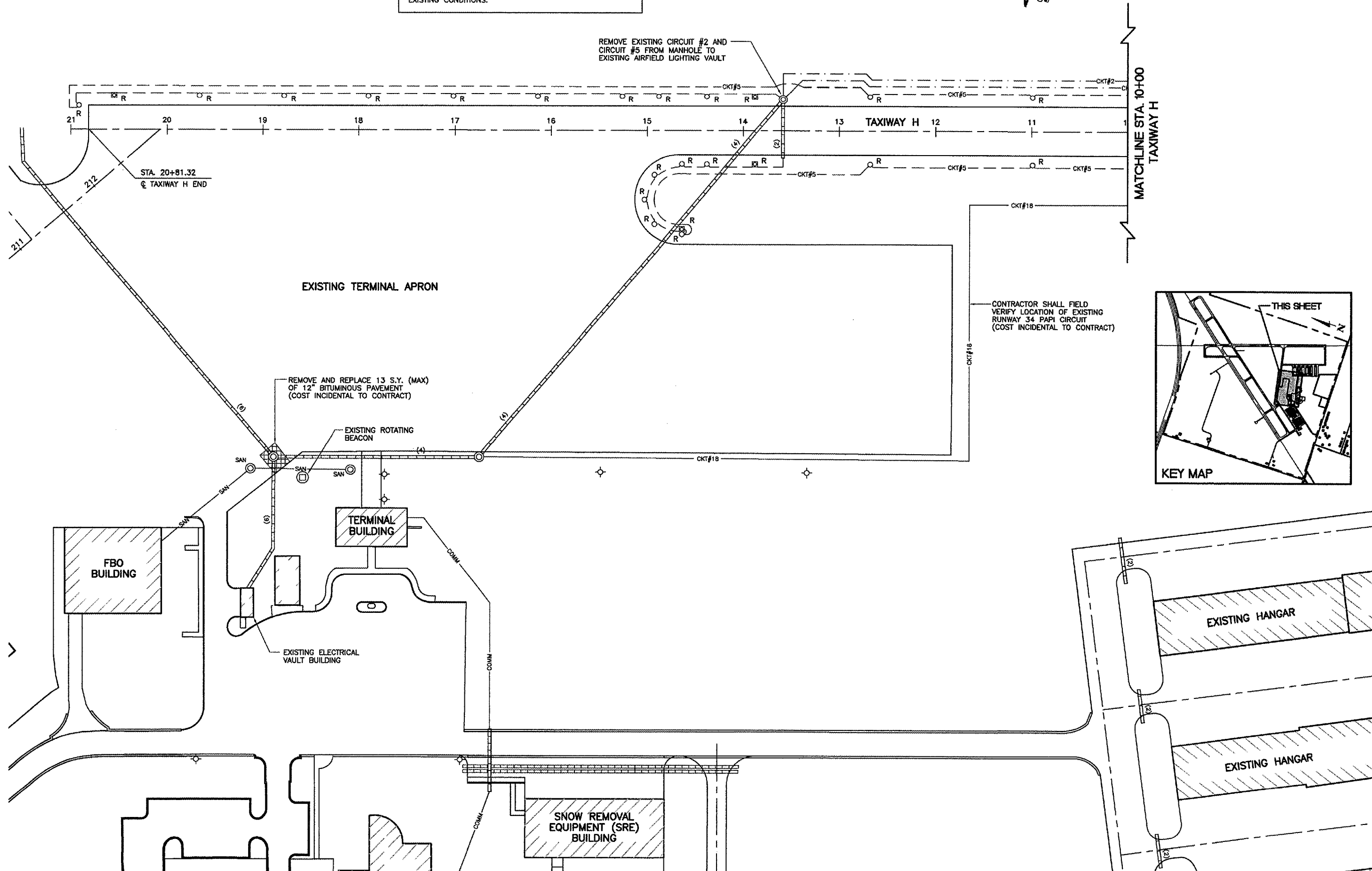
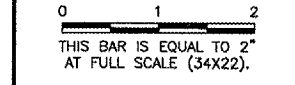


THE INFORMATION SHOWN ON THESE PLANS HAS BEEN OBTAINED FROM AVAILABLE RECORDS. NEITHER THE OWNER NOR THE ENGINEER ASSUMES ANY RESPONSIBILITY WHATEVER IN RESPECT TO THE ACCURACY OR SUFFICIENCY OF THE INFORMATION AND THERE IS NO GUARANTEE EITHER EXPRESSED OR IMPLIED THAT THE CONDITIONS INDICATED ARE REPRESENTATIVE OF THOSE TO BE ENCOUNTERED IN THE FIELD. IT SHALL BE THE CONTRACTOR'S RESPONSIBILITY TO VISIT THE SITE AND ACQUAINT HIMSELF WITH THE EXISTING CONDITIONS.

SEE EXISTING CONDITIONS/PROPOSED REMOVALS SHEET 6 FOR LEGEND AND NOTES



REVISIONS		
NUMBER	BY	DATE



**GREATER KANKAKEE AIRPORT
 KANKAKEE, ILLINOIS
 REHABILITATE AIRFIELD LIGHTING SYSTEM -
 RUNWAY 16/34 AND TAXIWAY H
 STA. 10+00 TO STA. 21+00**

© copyright CMT, Inc.
CMT
 CRAWFORD MURPHY & TILLY, INC.
 CONSULTING ENGINEERS
 License No. 184-000513

DESIGN BY:	MND
DRAWN BY:	JRO
CHECKED BY:	MND
APPROVED BY:	
DATE:	02/29/08
JOB No:	07075-02
IL. PROJECT:	IKK-3743
A.L.P. PROJECT:	3-17-0057-B13
SHEET 10 OF 17 SHEETS	