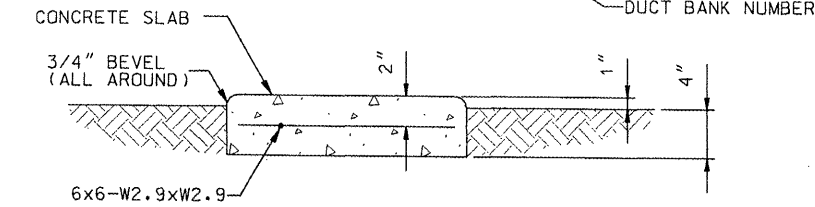
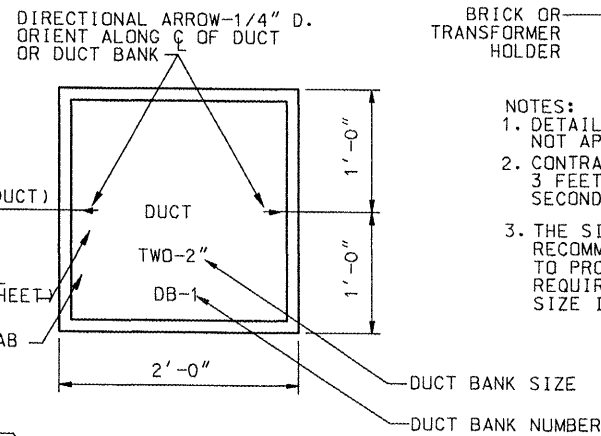


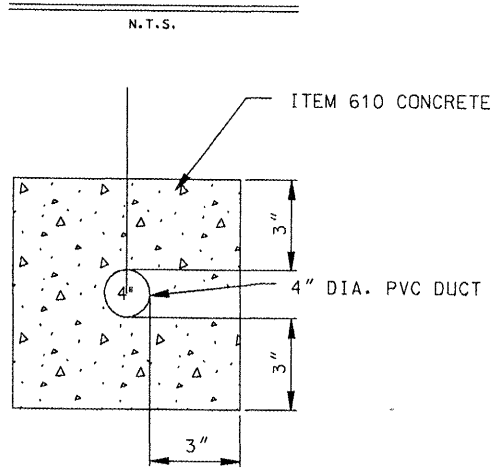
- NOTES:
1. L-868B BASE TO BE SET 1 1/2" BELOW FINISH PAVEMENT.
 2. CONCRETE ANCHOR TO BE P-610.

BASE MOUNTED SEMI- FLUSH TAXIWAY LIGHT

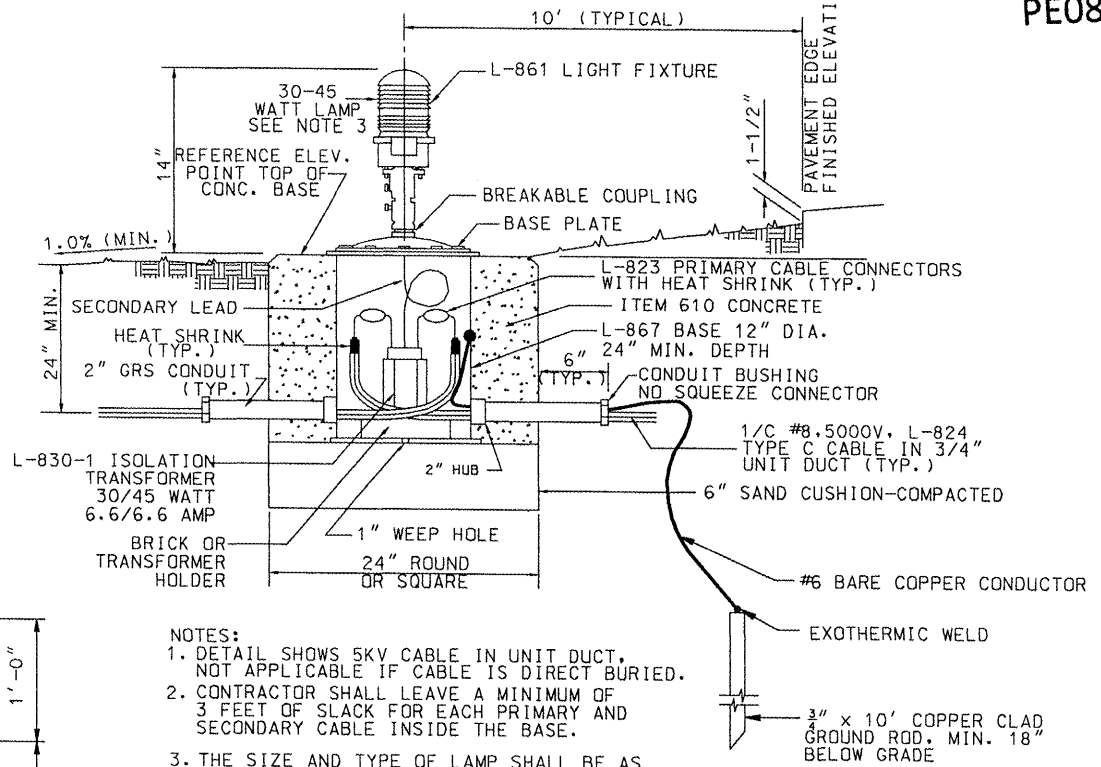


- NOTES:
1. LOCATIONS OF ENDS OF ALL UNDERGROUND DUCTS SHALL BE IDENTIFIED BY DUCT MARKERS.
 2. DUCT MARKERS SHALL BE INSTALLED DIRECTLY ABOVE THE DUCT. IMPRESS IN SURFACE OF SLAB, NUMBER OF DUCTS AND DUCT BANK NUMBER.
 3. CONTRACTOR SHALL INSTALL DUCT MARKERS AT FAA DUCTS. MARKERS AT FAA DUCTS SHALL SAY "FAA".

DUCT MARKER

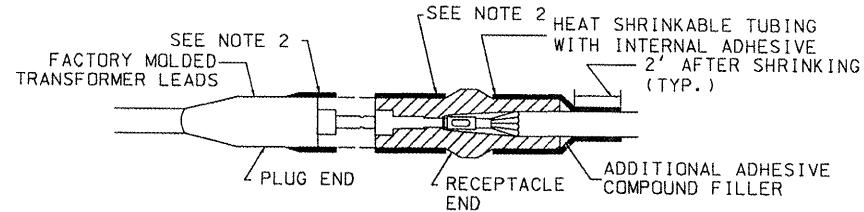


CONCRETE ENCASED DUCT DETAIL



- NOTES:
1. DETAIL SHOWS 5KV CABLE IN UNIT DUCT, NOT APPLICABLE IF CABLE IS DIRECT BURIED.
 2. CONTRACTOR SHALL LEAVE A MINIMUM OF 3 FEET OF SLACK FOR EACH PRIMARY AND SECONDARY CABLE INSIDE THE BASE.
 3. THE SIZE AND TYPE OF LAMP SHALL BE AS RECOMMENDED BY THE FIXTURE MANUFACTURER TO PROVIDE DISTRIBUTION AND MINIMUM OUTPUT REQUIREMENTS OF CURVES SHOWN FOR EACH SIZE IN AC 150/5345-46B.

BASE MOUNTED MEDIUM INTENSITY LIGHTS

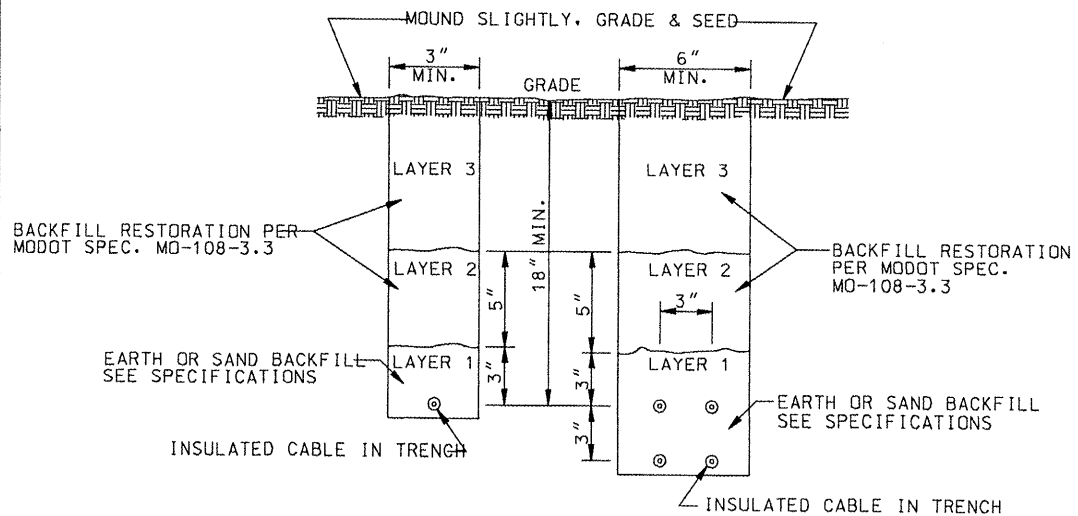


TYPE C
FOR SPLICES AT RUNWAY LIGHTS,
TAXIWAY LIGHTS AND SIGNS

CABLE SPLICE NOTES

1. INSIDE DIAMETER OF CONNECTOR SHALL PROPERLY MATCH THE OUTSIDE DIAMETER OF CABLE
2. WRAP WITH AT LEAST ONE LAYER OF RUBBER OR SYNTHETIC RUBBER TAPE AND ONE LAYER OF PLASTIC TAPE, ONE-HALF LAPPED, EXTENDING AT LEAST 1-1/2 INCHES ON EACH SIDE OF JOINT PRIOR TO HEAT SHRINKING.

CABLE SPLICES

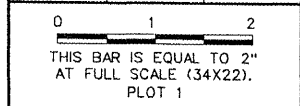


DIRECT BURY CABLE TRENCH DETAIL

NOTE: CABLES SHALL NOT BE PLACED LESS THAN 18" DEEP IN ANY ONE TRENCH. CABLES WITH DIFFERENT VOLTAGE RATINGS SHALL NOT BE INSTALLED IN THE SAME TRENCH.

PE086

REVISIONS		
NUMBER	BY	DATE



GREATER
Peria
REGIONAL
Airport

CONSTRUCT NEW PERIMETER ROAD AND
PERIMETER FENCE - PROJECT 1

CMT
CRAMFORD, MURPHY & TILLY, INC.
CONSULTING ENGINEERS

IL PROJECT: PIA-3343
AIP PROJ: 3-17-0080-XX

FILE: ...\\032_electrical_DETAILS.dgn

DESIGN BY: TWM, RBL

DRAWN BY: CAG

CHECKED BY: RBL

APPROVED BY: CET

DATE: APRIL 24, 2008

JOB No: 0706104

AIRFIELD ELECTRICAL
DETAILS

SHEET 32 OF 140 SHEETS

4/23/2008 K:\Peoria\0706104\Draw\Sheets\032_electrical_DETAILS.dgn