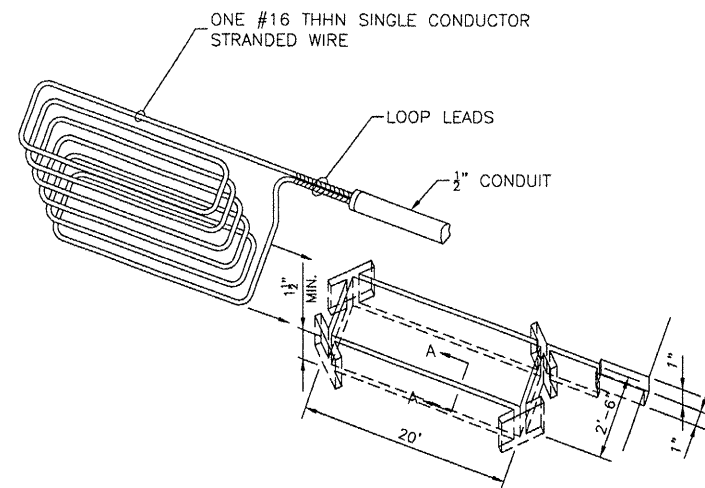


PE086

REVISIONS

NUMBER	BY	DATE

0 1 2
THIS BAR IS EQUAL TO 2"
AT FULL SCALE (34X22).
PLOT 1

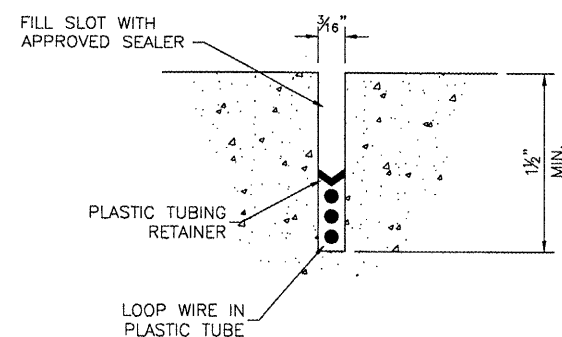


PERSPECTIVE VIEW OF
DETECTOR LOOP SAW SLOT

NOTE:
LOCATIONS, DETAILS AND CHARACTER OF EQUIPMENT SHOWN ON THIS SHEET ARE GENERIC. EQUIPMENT LOCATION SHALL BE AS RECOMMENDED BY THE EQUIPMENT MANUFACTURER.

NOTES

1. LOOP LEADS ARE LIMITED TO 100 FEET.
2. LOOP LEADS MUST HAVE FOUR (4) TWISTS PER FOOT.
3. LOOP AND LOOP LEADS MUST BE LOCATED, AT LEAST, 18" FROM ANY ELECTRICAL POWER SERVICE OR STEEL REINFORCEMENT.
4. LOOP LEADS MUST BE IN SEPARATE CONDUIT BETWEEN LOOP AND DETECTOR. THEY MUST NOT SHARE CONDUIT WITH OTHER WIRING OR LEADS FROM OTHER LOOPS.
5. WIRE SHALL BE #16 THHN SINGLE CONDUCTOR STRANDED WIRE.
6. ALL WIRE SHALL BE CONTINUOUS WITHOUT SPLICING.



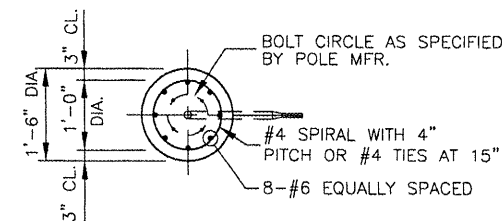
SECTION A-A

CAUTION:

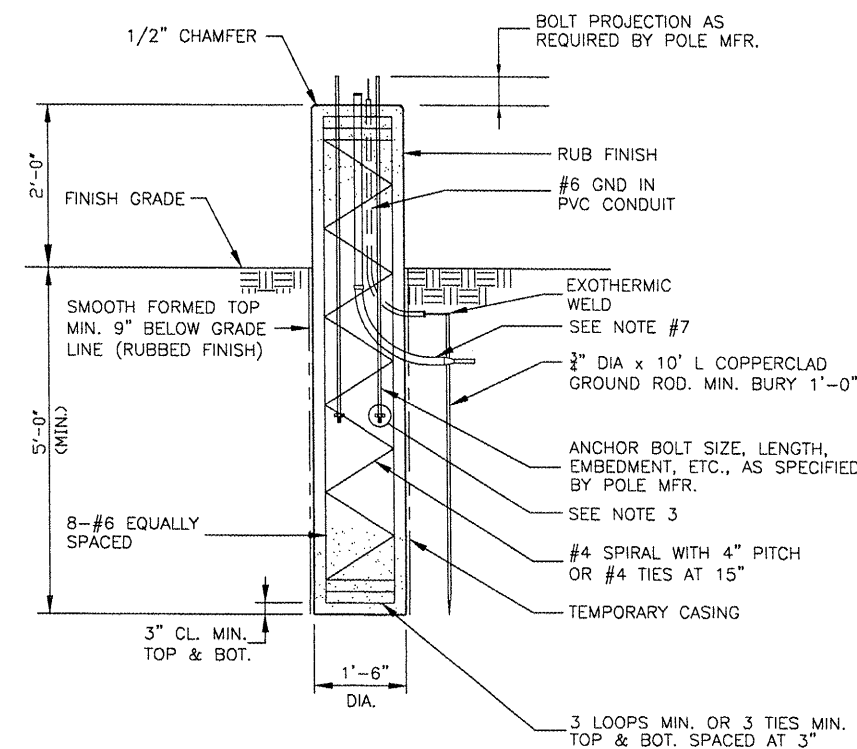
- DO NOT SPLICE WIRE.
- DO NOT FRACTURE WIRE INSULATION. LOOPS SHORTED TO GROUND WILL CAUSE DETECTOR MALFUNCTION. WHEN PLACING WIRE IN THE SLOT. DO NOT USE SCREWDRIVER OR OTHER SHARP TOOLS.

TYPICAL LAYOUT FOR LOOP:

- SAW SLOT 3/16" WIDE x 1-1/2" DEEP. MAKE RECTANGULAR SHAPE TO SPECIFIED LOOP DIMENSIONS PLUS SLOT FOR LEAD CONDUIT.
- GROUT WITH NO. 202 WEATHERBAN SEALANT (A PRODUCT OF 3M CO.) OR APPROVED EQUIVALENT ... (EXAMPLE: DE WITTS NO. 99 BLACK MASTIC CAULK).



TOP VIEW
N.T.S.



GATE 7A AND 7B AREA
LIGHT POLE FOUNDATION
N.T.S.

LIGHT POLE FOUNDATION NOTES

1. CONCRETE SHALL BE CAST MONOLITHICALLY. NO CONSTRUCTION JOINTS SHALL BE ALLOWED.
2. THE ANCHOR BOLTS FOR THE POLE SHALL BE DESIGNED BY THE POLE MANUFACTURER. MIN. EMBEDMENT SHALL BE 36".
3. A NUT SHALL BE INSTALLED ON THE EMBEDDED END OF THE ANCHOR ROD. DEFORM THREAD OR USE CHEMICAL THREAD LOCK TO SECURE NUT.
4. THE MINIMUM CONCRETE COMPRESSIVE STRENGTH SHALL BE 3500 P.S.I. @ 14 DAYS (IDOT CLASS SI).
5. THE REINFORCEMENT SHALL CONFORM TO ASTM A-615 GRADE 60.
6. #4 LAP=2'-0" MIN.
7. WIRING FOR LIGHT FIXTURE AS NEEDED.

GATE 7A & 7B DETECTOR LOOP DETAILS
N.T.S.

GREATER Peoria REGIONAL Airport
CONSTRUCT NEW PERIMETER ROAD AND PERIMETER FENCE - PROJECT 1

CMT
CRAWFORD, MURPHY & TILLY, INC.
CONSULTING ENGINEERS
©Copyright CMT, Inc.

IL PROJECT: PIA-3343
AIP PROJ: 3-17-0080-XX

FILE:	\$FILES
DESIGN BY:	CET
DRAWN BY:	CMT
CHECKED BY:	XXX
APPROVED BY:	XXX
DATE:	10-26-2007
JOB No:	0706104

GATE 7A & 7B
DETAILS 2