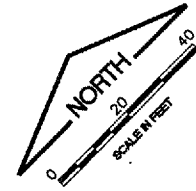
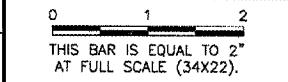


REVISIONS		
NUMBER	BY	DATE



MAIN TERMINAL

LEGEND

- NEW PAVEMENT MARKING
- NEW PARKING BLOCK

NOTES:

1. MARK TOP AND FACE OF NEW CURB ALONG NORTH SIDE OF CONCOURSE. GAPS WILL BE LEFT AT THE SIDEWALK RAMPS.
2. CONTRACTOR TO PROTECT TERMINAL BUILDINGS FROM PAINT SPRAY. PAINT SPRAYED ONTO BUILDINGS WILL BE CLEANED AT THE CONTRACTOR'S EXPENSE.
3. SEE MARKING AND GROUND ROD PLAN FOR APRON AND AIRFIELD MARKING.
4. SEE ENHANCED CENTERLINE MARKING CONSTRUCTION ACTIVITY PLANS 1 THROUGH 8 FOR ENHANCED CENTERLINE MARKING LOCATIONS.

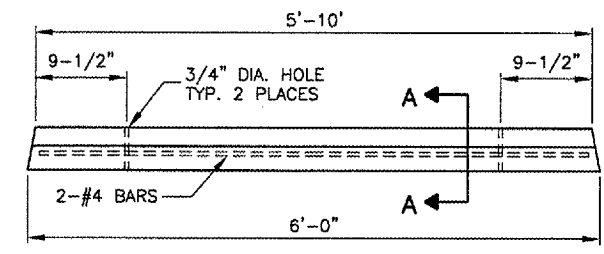
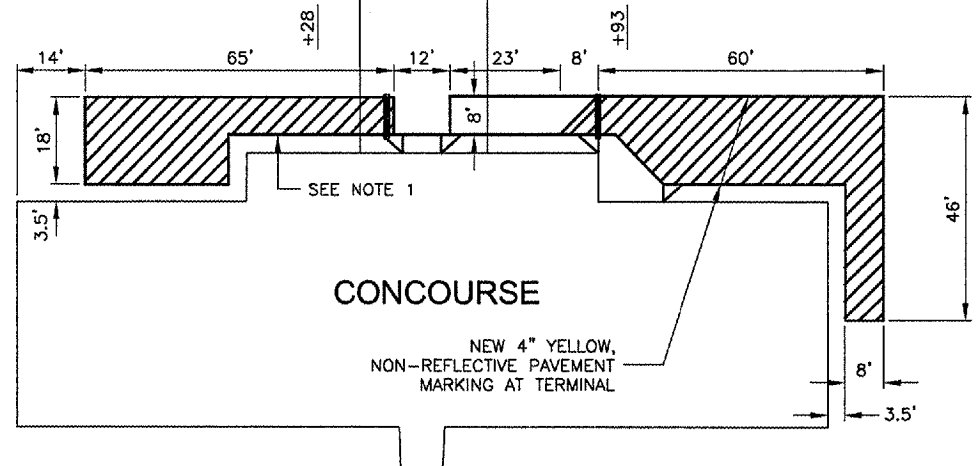
EXISTING GUARDRAIL TO BE REPAINTED (TYP.)

7 SPACES @ 10' = 70' CENTER SPACED

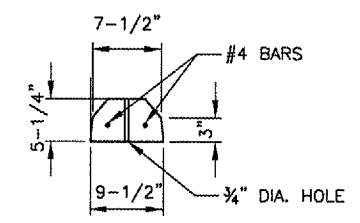
NEW PARKING BLOCK (TYP.) PLACE AS DIRECTED BY RESIDENT ENGINEER

NEW 4" YELLOW, REFLECTIVE PARKING SPACE MARKING NO BLACK BORDER

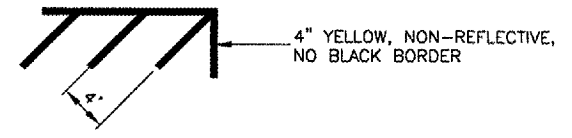
NEW 6" YELLOW, REFLECTIVE, NO BLACK BORDER



PRECAST PARKING BLOCK
N.T.S.



SECTION A-A
N.T.S.



PAVEMENT MARKING AT TERMINAL
N.T.S.

UNIVERSITY OF ILLINOIS
 WILLARD AIRPORT
 REHABILITATE AIR CARRIER RAMP, PHASE 2
 TERMINAL AREA MARKING PLAN
 AND PARKING BLOCK LAYOUT

© Copyright CMT, Inc.
CMT
 CRAWFORD, MURPHY & TILLY, INC.
 CONSULTING ENGINEERS
 License No. 184-000813

DESIGN BY: SMS
 DRAWN BY: DPA
 CHECKED BY: *SM*
 APPROVED BY: *SM*
 DATE: 04/18/2008
 JOB No: 0305903