

STAGE 1 AND 2

NOTES:

- ALL CONTRACTOR'S ACTIVITIES SHALL TAKE PLACE WITHIN CONSTRUCTION LIMIT LINES AS SHOWN.
- ALL CONSTRUCTION EQUIPMENT WILL BE LIMITED TO A HEIGHT OF 25 FEET (EXCEPT THE STORAGE AREA, WHICH IS LIMITED TO 15 FEET) UNLESS PRIOR APPROVAL GIVEN BY THE ENGINEER.
- CONTRACTOR'S EQUIPMENT MAY NOT DISRUPT FLIGHT OPERATIONS ON RUNWAY 5-23 DURING STAGE 1 AND 3 OR ON RUNWAY 14-32 IN STAGE 1 AND 2.
- SEE CONSTRUCTION AND SAFETY NOTES, SHEET 4.

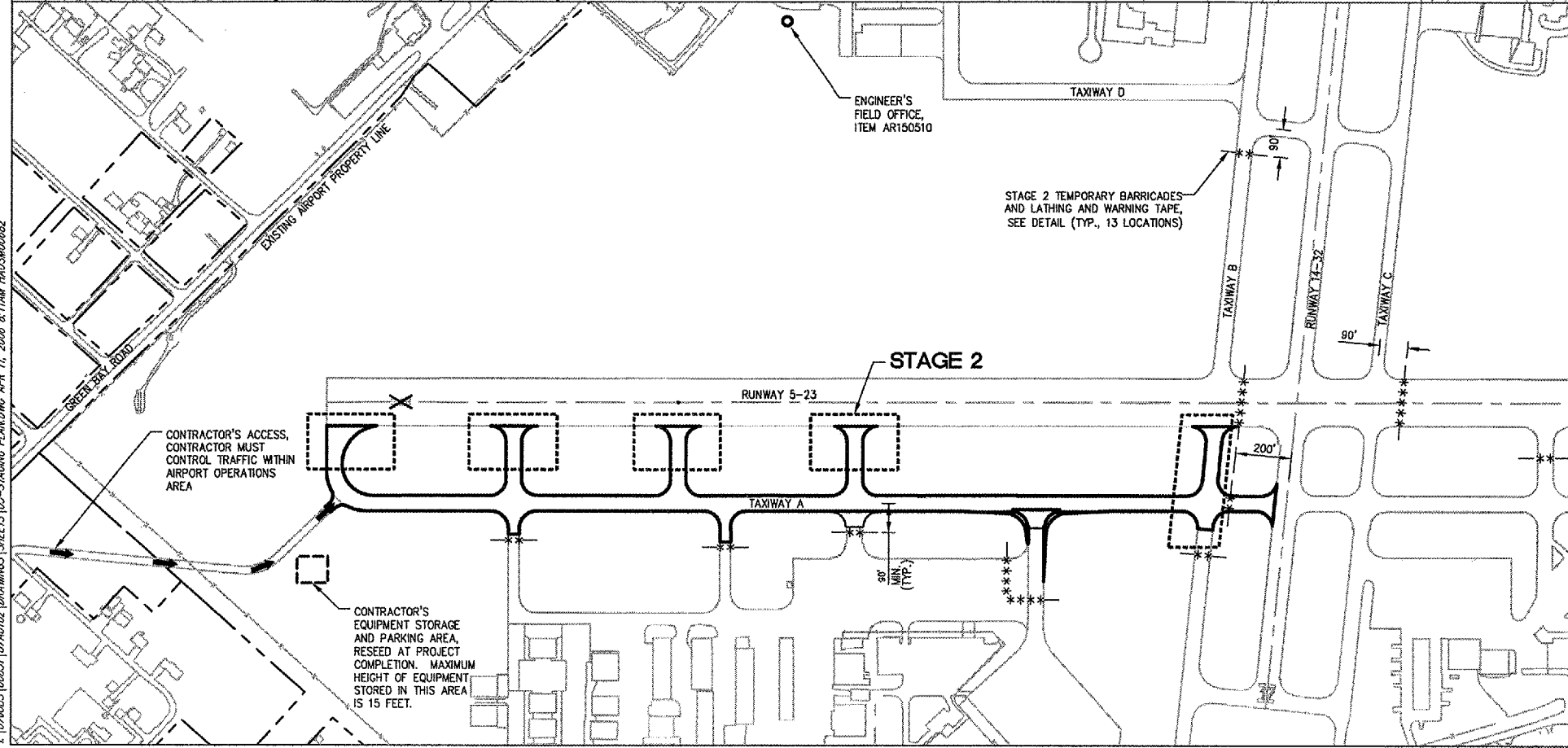
THE FOLLOWING ITEMS ARE TO BE COMPLETED IN STAGE 1:

- PLACE LATHING AND WARNING TAPE AND BARRICADES AS SHOWN.
- INSTALL TEMPORARY SOIL EROSION CONTROL MEASURES AS REQUIRED.
- REMOVE PORTIONS OF P.C.C. PAVEMENT.
- CONSTRUCT NEW BITUMINOUS PAVEMENT FILLETS AT TAXIWAY M2.
- OVERLAY BITUMINOUS PAVEMENTS.
- FILL SHOULDERS ALONG PAVEMENT EDGES.
- ADJUST EDGE LIGHTS AND GUIDANCE SIGNS.
- PLACE TOPSOIL, SEEDING/SODDING AND MULCHING.
- COMPLETE PAVEMENT MARKINGS WITHIN STAGE 1 LIMITS.
- REMOVE BARRICADES AND LATHING AND WARNING TAPE.

THE FOLLOWING ITEMS ARE TO BE COMPLETED IN STAGE 2:

NOTE: WORK IN STAGE 2 SHALL BE LIMITED TO 6 HOURS EACH DAY ON 4 CONSECUTIVE CALENDAR DAYS. CONTRACTOR SHALL REOPEN RUNWAY AT THE END OF EACH 6 HOUR PERIOD. BEFORE THE RUNWAY CAN BE REOPENED, THE MAXIMUM DROP IN PAVEMENT BETWEEN OLD AND NEW PAVEMENTS AND ADJACENT GROUND SHALL BE 3 INCHES. OWNER SHALL BE GIVEN 5 DAYS ADVANCE NOTICE OF THE FIRST SCHEDULED CLOSURE DAY.

- PLACE LATHING AND WARNING TAPE, BARRICADES AND RUNWAY CLOSURE MARKERS AS SHOWN.
- OVERLAY BITUMINOUS PAVEMENTS.
- FILL SHOULDERS ALONG PAVEMENT EDGES.
- ADJUST EDGE LIGHTS AND GUIDANCE SIGNS.
- PLACE TOPSOIL, SEEDING/SODDING AND MULCHING.
- COMPLETE PAVEMENT MARKINGS WITHIN STAGE 2 LIMITS.
- REMOVE ANY REMAINING DEBRIS AND SWEEP PAVEMENTS.
- REMOVE BARRICADES AND LATHING AND WARNING TAPE.
- REMOVE RUNWAY CLOSURE MARKERS.



WA059



HANSON PROFESSIONAL SERVICES INC.

815 Commerce Drive, Suite 200
Oak Brook, Illinois 60523
Telephone: 630.990.3800
Fax: 630.990.3801

Illinois Professional Design Firm
Registration No. 184-001084

© Copyright Hanson Professional Service Inc. 2007



WAUKEGAN REGIONAL AIRPORT
WAUKEGAN PORT DISTRICT

3580 North McAree Road
Waukegan, Illinois 60087
Telephone: 847.244.0066
Fax: 847.244.3813

WAUKEGAN REGIONAL AIRPORT
WAUKEGAN, ILLINOIS

REPAIR AND OVERLAY WEST
PORTION OF TAXIWAY A

AIP PROJECT NO. 3-17-0105-B39
IDA PROJECT NO. UGN-3751

No.	Drawing Issue Description	Date	By

Date
JANUARY 11, 2008

Sheet Title
CONSTRUCTION STAGING PLAN STAGES 1 AND 2

07A0102
Project Number
LDH 10/30/07
Layout By Date
LDH 10/30/07
Designed By Date
RMH 01/08/08
Reviewed By Date
LDH
Drawn By Sheet No.

4:107A055 (00831) 07A0102 DRAWINGS SHEETS 105-STAGING PLAN DWG APR 11, 2008 8:11AM HAUSH0682