



HANSON PROFESSIONAL SERVICES INC.

815 Commerce Drive, Suite 200
Oak Brook, Illinois 60523
Telephone: 630.990.3800
Fax: 630.990.3801

Illinois Professional Design Firm
Registration No. 184-001084

© Copyright Hanson Professional Service Inc. 2007



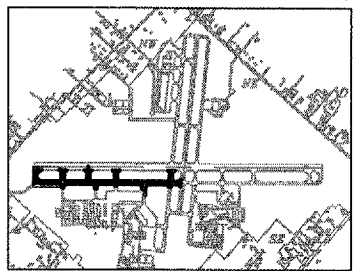
WAUKEGAN REGIONAL AIRPORT
WAUKEGAN PORT DISTRICT

3580 North McAree Road
Waukegan, Illinois 60087
Telephone: 847.244.0066
Fax: 847.244.3813

WAUKEGAN REGIONAL AIRPORT
WAUKEGAN, ILLINOIS

REPAIR AND OVERLAY WEST
PORTION OF TAXIWAY A

AIP PROJECT NO. 3-17-0105-B39
IDA PROJECT NO. UGN-3751



No.	Drawing Issue Description	Date	By

Date

JANUARY 11, 2008

Sheet Title

**STAKING PLAN
TAXIWAY A
STA. 298+79.2
THRU STA. 305+00**

07A0102	Project Number
LDH	Date 10/31/07
LDH	Date 10/31/07
RMH	Date 01/08/08
LDH	Date

EARTHWORK QUANTITIES

DESCRIPTION AND PAY ITEM	QUANTITY
TOPSOILING (FROM OFF SITE) ITEM AR905520	2740 C.Y.
UNCLASSIFIED EXCAVATION ITEM AR152411*	165 C.Y.

*FOR THIS PROJECT UNCLASSIFIED EXCAVATION IS A LUMP SUM ITEM. THIS IS AN ESTIMATED QUANTITY.

ALIGNMENT DATA

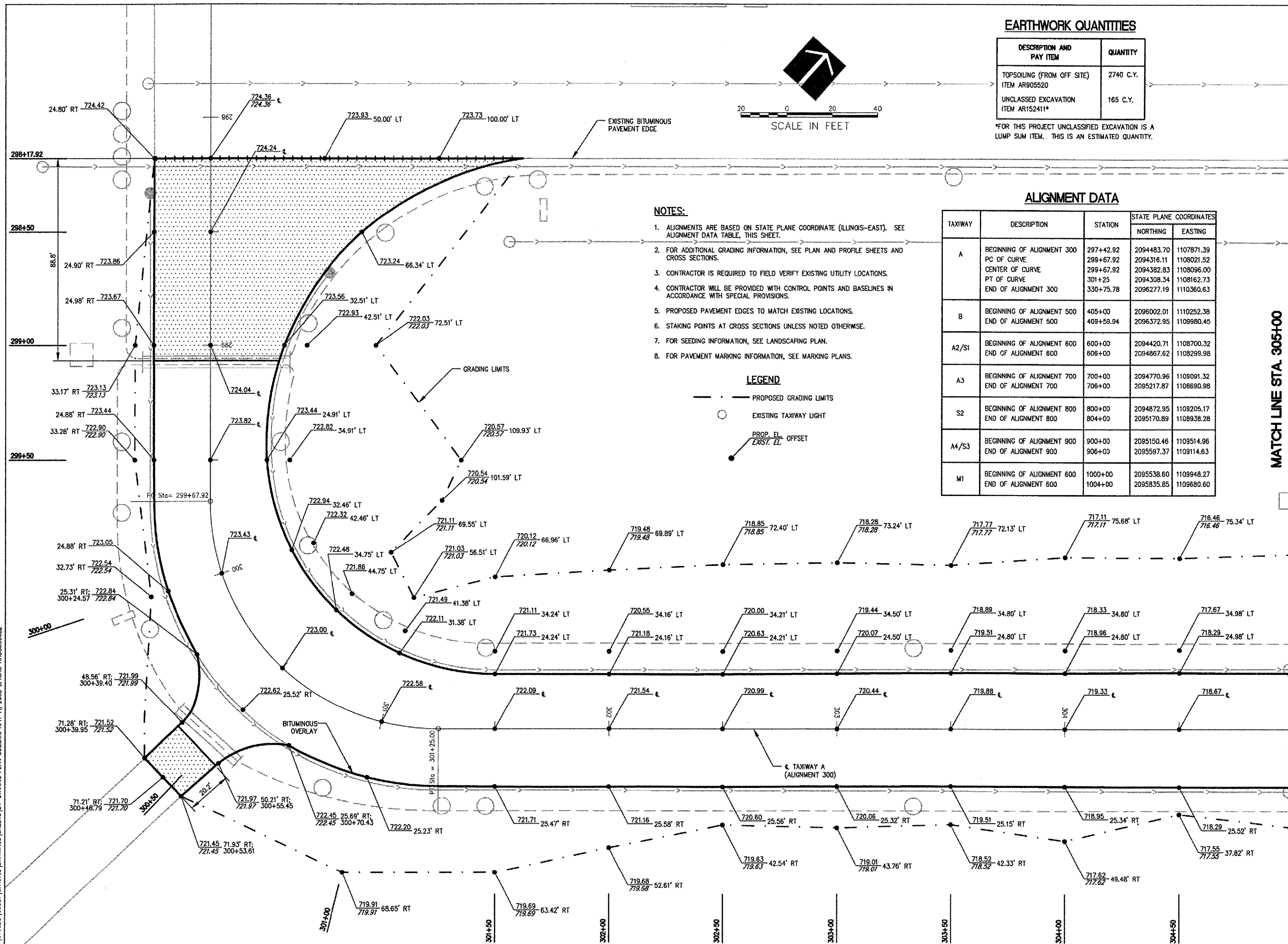
TAXIWAY	DESCRIPTION	STATION	STATE PLANE COORDINATES	
			NORTHING	EASTING
A	BEGINNING OF ALIGNMENT 300	297+42.92	2094483.70	1107871.39
	PC OF CURVE	298+67.92	2094316.11	1108021.52
	CENTER OF CURVE	299+67.92	2094382.83	1108096.00
	PT OF CURVE	301+25	2094308.34	1108162.73
	END OF ALIGNMENT 300	330+75.78	2096277.19	1110360.63
B	BEGINNING OF ALIGNMENT 500	405+00	2096002.01	1110252.38
	END OF ALIGNMENT 500	409+59.94	2096372.95	1109980.45
A2/S1	BEGINNING OF ALIGNMENT 600	600+00	2094420.71	1108700.32
	END OF ALIGNMENT 600	608+00	2094867.62	1108299.98
A3	BEGINNING OF ALIGNMENT 700	700+00	2094770.96	1108091.32
	END OF ALIGNMENT 700	706+00	2095217.87	1108690.98
S2	BEGINNING OF ALIGNMENT 800	800+00	2094872.95	1109205.17
	END OF ALIGNMENT 800	804+00	2095170.89	1108938.28
A4/S3	BEGINNING OF ALIGNMENT 900	900+00	2095150.46	1109514.96
	END OF ALIGNMENT 900	906+00	2095597.37	1109114.63
M1	BEGINNING OF ALIGNMENT 600	1000+00	2095538.60	1109948.27
	END OF ALIGNMENT 600	1004+00	2095835.85	1109680.60

NOTES:

- ALIGNMENTS ARE BASED ON STATE PLANE COORDINATE (ILLINOIS-EAST). SEE ALIGNMENT DATA TABLE, THIS SHEET.
- FOR ADDITIONAL GRADING INFORMATION, SEE PLAN AND PROFILE SHEETS AND CROSS SECTIONS.
- CONTRACTOR IS REQUIRED TO FIELD VERIFY EXISTING UTILITY LOCATIONS.
- CONTRACTOR WILL BE PROVIDED WITH CONTROL POINTS AND BASELINES IN ACCORDANCE WITH SPECIAL PROVISIONS.
- PROPOSED PAVEMENT EDGES TO MATCH EXISTING LOCATIONS.
- STAKING POINTS AT CROSS SECTIONS UNLESS NOTED OTHERWISE.
- FOR SEEDING INFORMATION, SEE LANDSCAPING PLAN.
- FOR PAVEMENT MARKING INFORMATION, SEE MARKING PLANS.

LEGEND

- PROPOSED GRADING LIMITS
- EXISTING TAXIWAY LIGHT
- PROP. EL. EXIST. EL. OFFSET



4:107.005 (00831) 07A0102 [DRAWINGS] SHEETS 24 - STAKING PLAN 300.00 APR 11, 2008 8:13AM HANSON0682