

D-91-014-10 *734-2=732

STATE OF ILLINOIS
DEPARTMENT OF TRANSPORTATION
DIVISION OF HIGHWAYS

PROPOSED HIGHWAY PLANS

FAP ROUTE 338: IL ROUTE 59
NORTH AURORA ROAD TO DIEHL ROAD
SECTION (112 & 113) WRS-6
PROJECT: ACNHF-0338(049)

ROADWAY RECONSTRUCTION
DUPAGE COUNTY
C-91-065-12

THE PROJECT IS LOCATED IN THE CITY OF
NAPERVILLE (PRIMARY) AND UNINCORPORATED
DUPAGE COUNTY

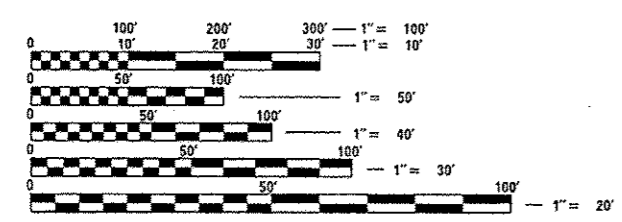
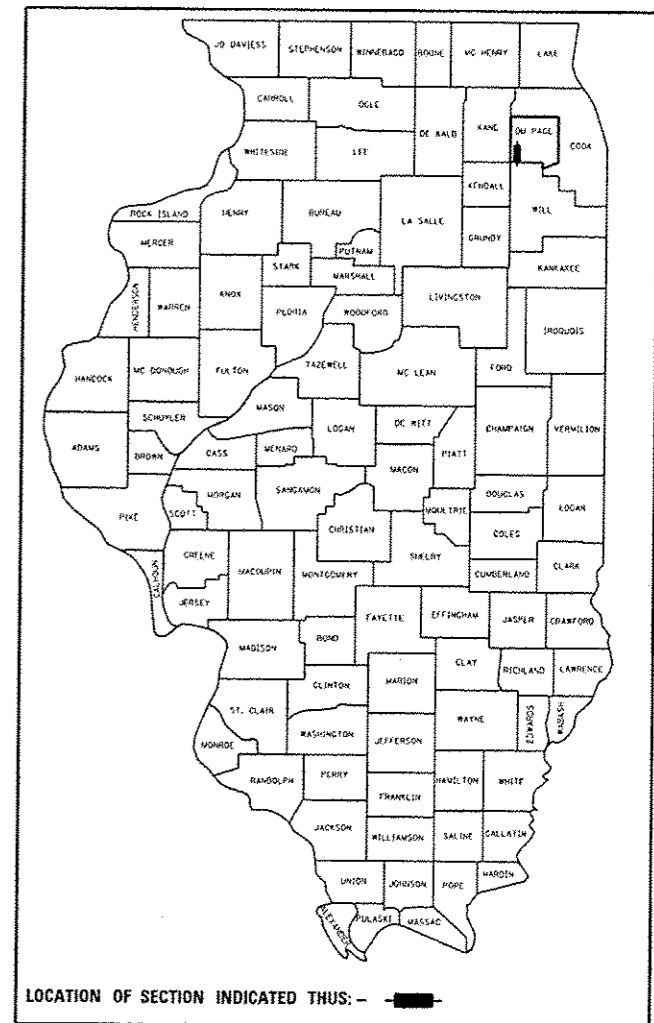
FOR INDEX OF SHEETS, SEE SHEET NO. 2

DESIGN DESIGNATION

5110(30) OTHER PRINCIPAL ARTERIAL 18.96 (PCC-20)

TRAFFIC DATA

	ADT	SPEED
	2009/2030	DESIGN/POSTED
IL ROUTE 59		
N AURORA TO DIEHL	47,200/74,000	45/45
DIEHL TO I-88	47,200/67,000	30/30
I-88 TO FERRY	30,400/51,000	45/45
BRUCE	2,900/5,000	25/25
BROOKDALE	3,600/7,000	35/30
DIEHL (WEST)	14,100/45,000	45/40
DIEHL (EAST)	19,000/29,000	45/40

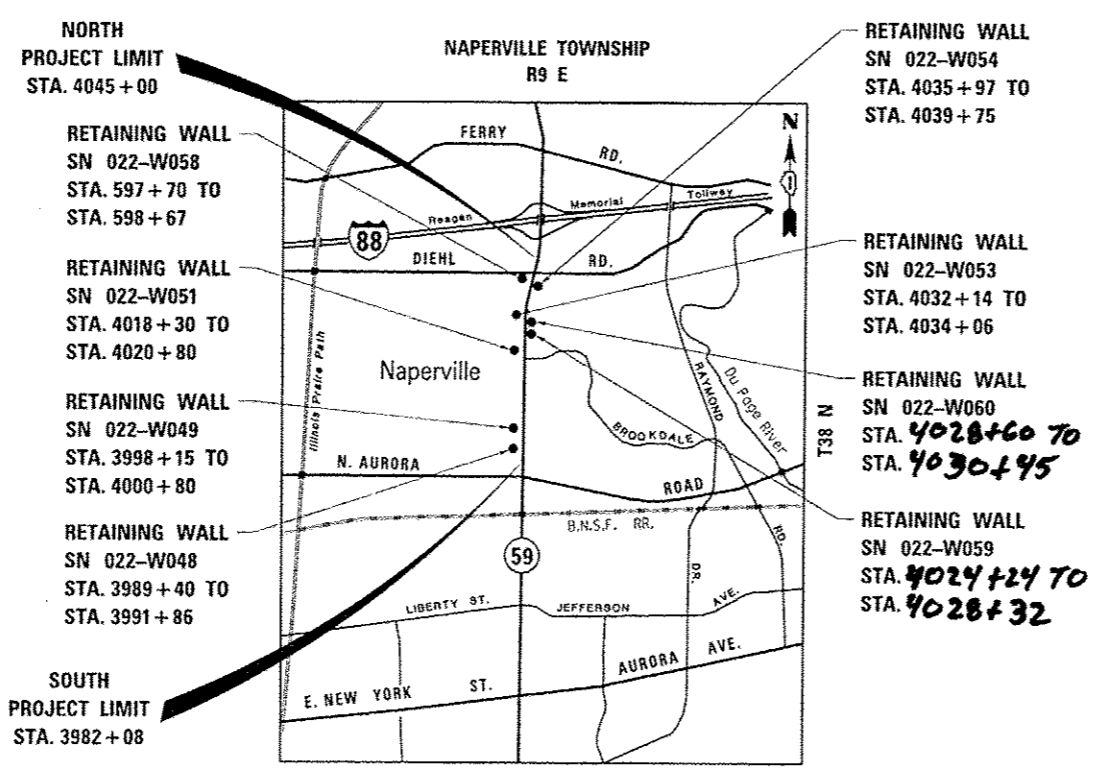


FULL SIZE PLANS HAVE BEEN PREPARED USING STANDARD
ENGINEERING SCALES. REDUCED SIZED PLANS WILL NOT
CONFORM TO STANDARD SCALES. IN MAKING MEASUREMENTS
ON REDUCED PLANS, THE ABOVE SCALES MAY BE USED.

J.U.L.I.E.
JOINT UTILITY LOCATION INFORMATION FOR EXCAVATION
1-800-892-0123
OR 811

PROJECT MANAGER - BRIAN KUTTAB
(847)705-4431

CONTRACT NO. 60R31



LOCATION MAP

NET LENGTH OF PROJECT = 6,292 FEET = 1.19 MILES
GROSS LENGTH OF PROJECT = 1.19 MILES

	KNIGHT E/A, INC. Date: 12-13-12 John C. Murillo Expires: 11-30-13 Sheet No.: 1-380, 425-488 558-734	
		ZROKA ENGINEERING, P.C. Date: 12-13-12 Deborah A. Zroka Expires: 11-30-14 Sheet No.: 489-557
		REGINA WEBSTER & ASSOC., INC. Date: 12-13-12 Daniel Wiktorzak Expires: 11-30-13 Sheet No.: 381-424

STATE OF ILLINOIS
DEPARTMENT OF TRANSPORTATION
DIVISION OF HIGHWAYS

SUBMITTED December 13, 2012

John C. Murillo
DEPUTY DIRECTOR OF HIGHWAYS, REGION ENGINEER

Feb 1, 2013
John D. Barnzelli, P.E. Ior
acting ENGINEER OF DESIGN AND ENVIRONMENT

Feb 1, 2013
Omer Osman, P.E. Ior
DIRECTOR OF HIGHWAYS, CHIEF ENGINEER

PRINTED BY THE AUTHORITY
OF THE STATE OF ILLINOIS

Plans Prepared By:
KNIGHT
Engineers & Architects

221 North LaSalle Street
Suite 300
Chicago, IL 60601-1211
Phone: (312) 577-3300

Rev.