

MOT PAVEMENT MARKING LEGEND

- (A) TEMPORARY PAVEMENT MARKING - LINE 4", SOLID WHITE
- (B) TEMPORARY PAVEMENT MARKING - LINE 4", WHITE SKIP-DASH (10' LINE - 30' SPACE)
- (C) TEMPORARY PAVEMENT MARKING - LINE 4", SOLID YELLOW
- (D) TEMPORARY PAVEMENT MARKING - LINE 4", DOUBLE YELLOW SPACED AT 11" C-C WITH TEMPORARY RAISED REFLECTIVE PAVEMENT MARKERS SPACED 40' C-C (BI-DIRECTIONAL AMBER)
- (E) TEMPORARY PAVEMENT MARKING - LINE 6", SOLID WHITE
- (F) TEMPORARY PAVEMENT MARKING - LINE 6", WHITE DOTTED (2' LINE - 6' SPACE) (UNLESS OTHERWISE NOTED)
- (G) TEMPORARY PAVEMENT MARKING - LINE 12", SOLID YELLOW
- (H) TEMPORARY PAVEMENT MARKING - LINE 24", SOLID WHITE
- (I) TEMPORARY PAVEMENT MARKING, LETTERS & SYMBOLS
- (J) WET REFLECTIVE TEMPORARY TAPE, TYPE III, 4", SOLID WHITE
- (K) WET REFLECTIVE TEMPORARY TAPE, TYPE III, 4", WHITE SKIP-DASH (10' LINE - 30' SPACE)
- (L) WET REFLECTIVE TEMPORARY TAPE, TYPE III, 4", SOLID YELLOW
- (M) WET REFLECTIVE TEMPORARY TAPE, TYPE III, 4", DOUBLE YELLOW SPACED AT 11" C-C WITH TEMPORARY RAISED REFLECTIVE PAVEMENT MARKERS SPACED 40' C-C (BI-DIRECTIONAL AMBER)
- (N) WET REFLECTIVE TEMPORARY TAPE, TYPE III, 6", SOLID WHITE
- (O) WET REFLECTIVE TEMPORARY TAPE, TYPE III, 6", WHITE DOTTED (2' LINE - 6' SPACE) (UNLESS OTHERWISE NOTED)
- (P) WET REFLECTIVE TEMPORARY TAPE, TYPE III, 12", SOLID YELLOW
- (R) WET REFLECTIVE TEMPORARY TAPE, TYPE III, 24", SOLID WHITE
- (S) WET REFLECTIVE TEMPORARY TAPE, TYPE III, LETTERS & SYMBOLS

LEGEND

- CONSTRUCTION WORK ZONE
- TEMPORARY PAVEMENT PLACED IN THIS STAGE
- DIRECTION OF TRAFFIC
- TYPE II BARRICADE OR DRUM WITH STEADY BURNING LIGHT
- CHANNELIZATION DRUM WITH STEADY BURNING LIGHT
- TEMPORARY CONCRETE BARRIER
- VERTICAL PANEL WITH STEADY BURNING LIGHT
- SIGN
- TYPE III BARRICADE LOCATION
- FLASHING YELLOW LIGHT

TYPE II BARRICADES OR CHANNELIZATION DRUMS W/STEADY BURNING LIGHTS SPACED AT 25' C-C, TYP.

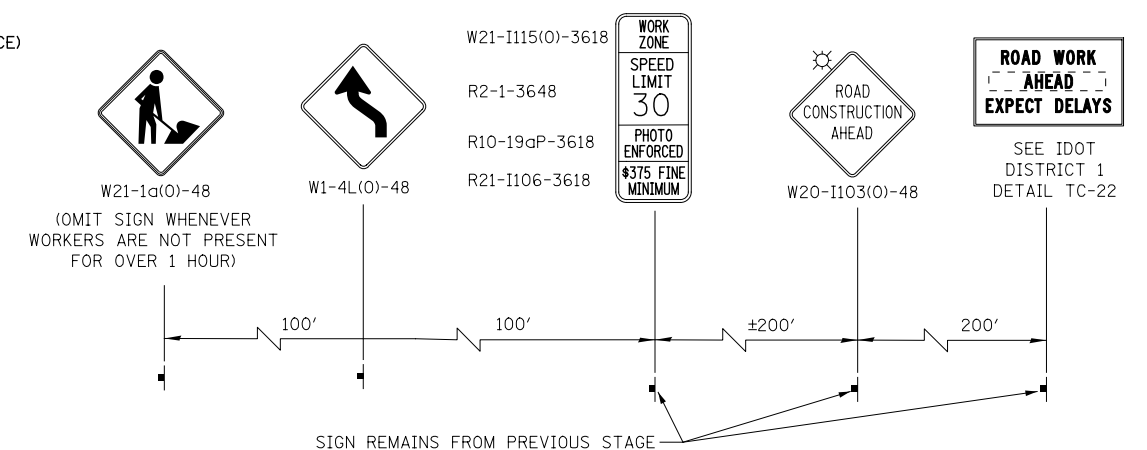
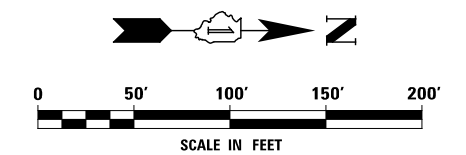
TYPE II BARRICADES OR CHANNELIZATION DRUMS WITH STEADY BURNING LIGHTS SPACED AT 25' C-C, TYP.

MAINTAIN ACCESS DURING CONSTRUCTION, TEMPORARY ACCESS (COMMERCIAL ENTRANCE)

TEMPORARY PAVEMENT MARKING LINE 4", SOLID YELLOW WITH 4" YELLOW SKIP-DASH (10' LINE - 30' SPACE) SPACED AT 5 1/2" C-C

MEET EXISTING PAVEMENT MARKING

SEE ADVANCE SIGNING SEQUENCE



ADVANCE SIGNING FOR BROOKDALE ROAD (SPACING MAY VARY DUE TO FIELD CONDITIONS)

DESIGNED	PJO	REVISED	-
DRAWN	KES	REVISED	-
CHECKED	JCM	REVISED	-
DATE	12/14/2012	REVISED	-

STATE OF ILLINOIS DEPARTMENT OF TRANSPORTATION

MAINTENANCE OF TRAFFIC - STAGE 1A ILLINOIS ROUTE 59 - BRUCE LN./BROOKDALE RD.

SCALE: AS SHOWN SHEET NO. 44 OF 117 SHEETS STA. 4010+00 TO STA. 4018+00

F.A.P. RTE.	SECTION	COUNTY	TOTAL SHEETS	SHEET NO.
338	(112 & 113) WRS-6	DUPAGE	734	113
CONTRACT NO. 60R31				
ILLINOIS FED. AID PROJECT				