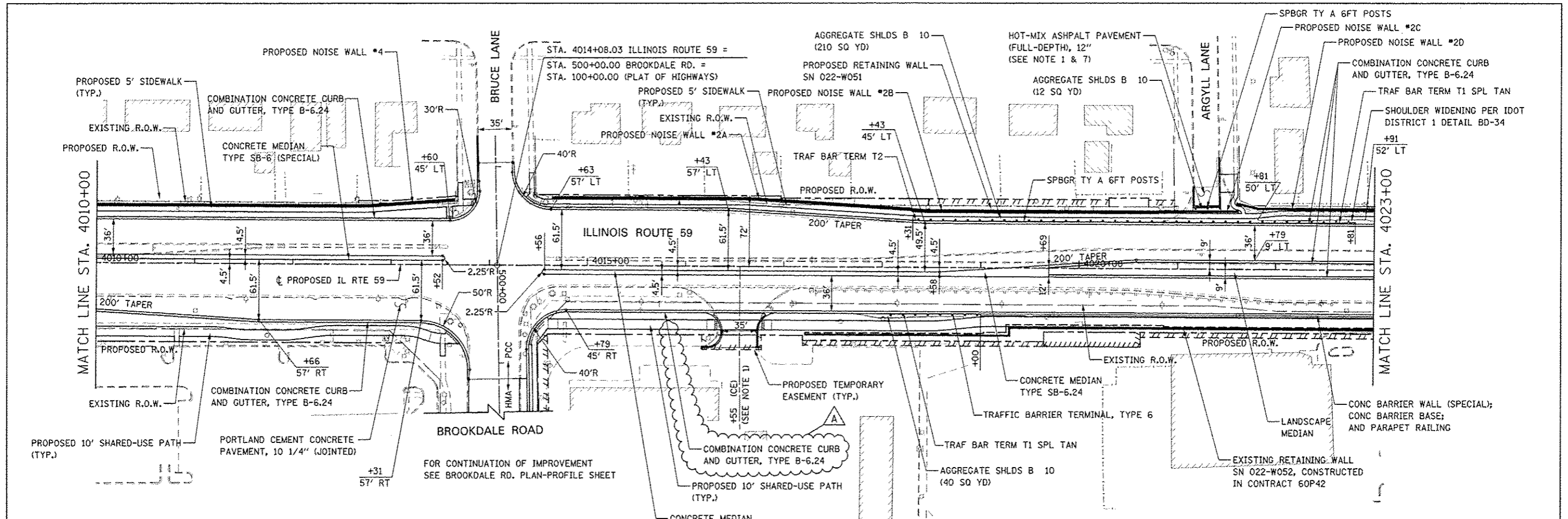


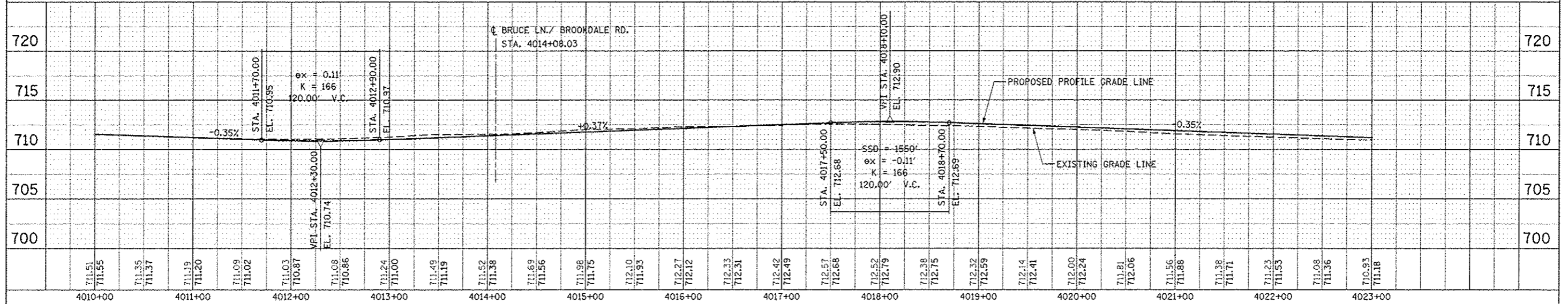
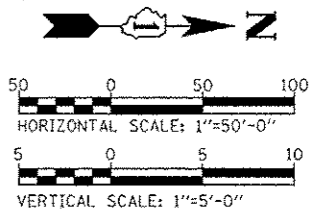
DATE	
BY	
PLANNING	
DESIGN	
CHECKED	
APPROVED	
NO.	

DATE	
BY	
PLANNING	
DESIGN	
CHECKED	
APPROVED	
NO.	



NOTES

1. SEE CORRESPONDING INTERSECTION DETAIL SHEET OR DRIVEWAY DETAILS SHEET FOR INTERSECTION OR DRIVEWAY INFORMATION.
2. FOR PROPOSED ILLINOIS ROUTE 59 CENTERLINE INFORMATION SEE THE ALIGNMENT, BENCHMARKS, AND TIES SHEETS.
3. FOR PROPOSED SIDEWALK AND SHARED-USE PATH INFORMATION, SEE SIDEWALK/SHARED-USED PATH PLANS.
4. FOR PROPOSED RETAINING WALLS INFORMATION, SEE STRUCTURAL PLANS.
5. FOR LANDSCAPING INFORMATION, SEE LANDSCAPING PLANS.
6. FOR PROPOSED NOISE WALLS INFORMATION, SEE NOISE WALL PLAN/PROFILE SHEETS.
7. FOR HMA MATERIAL REQUIREMENTS SEE HMA MIXTURE CHART ON THE GENERAL NOTE SHEET.



DESIGNED	PJO	REVISED	- ADDENDUM A 02/22/2013
DRAWN	RES	REVISED	-
CHECKED	JCM	REVISED	-
DATE	12/14/2012	REVISED	-

STATE OF ILLINOIS
DEPARTMENT OF TRANSPORTATION

PLAN / PROFILE - ILLINOIS ROUTE 59

F.A.P. RTE.	SECTION	COUNTY	TOTAL SHEETS
338	(112 & 113) WRS-6	DUPAGE	734
CONTRACT NO. 60R31			196

SCALE: AS SHOWN SHEET NO. 3 OF 9 SHEETS STA. 4010+00 TO STA. 4023+00