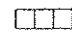

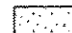

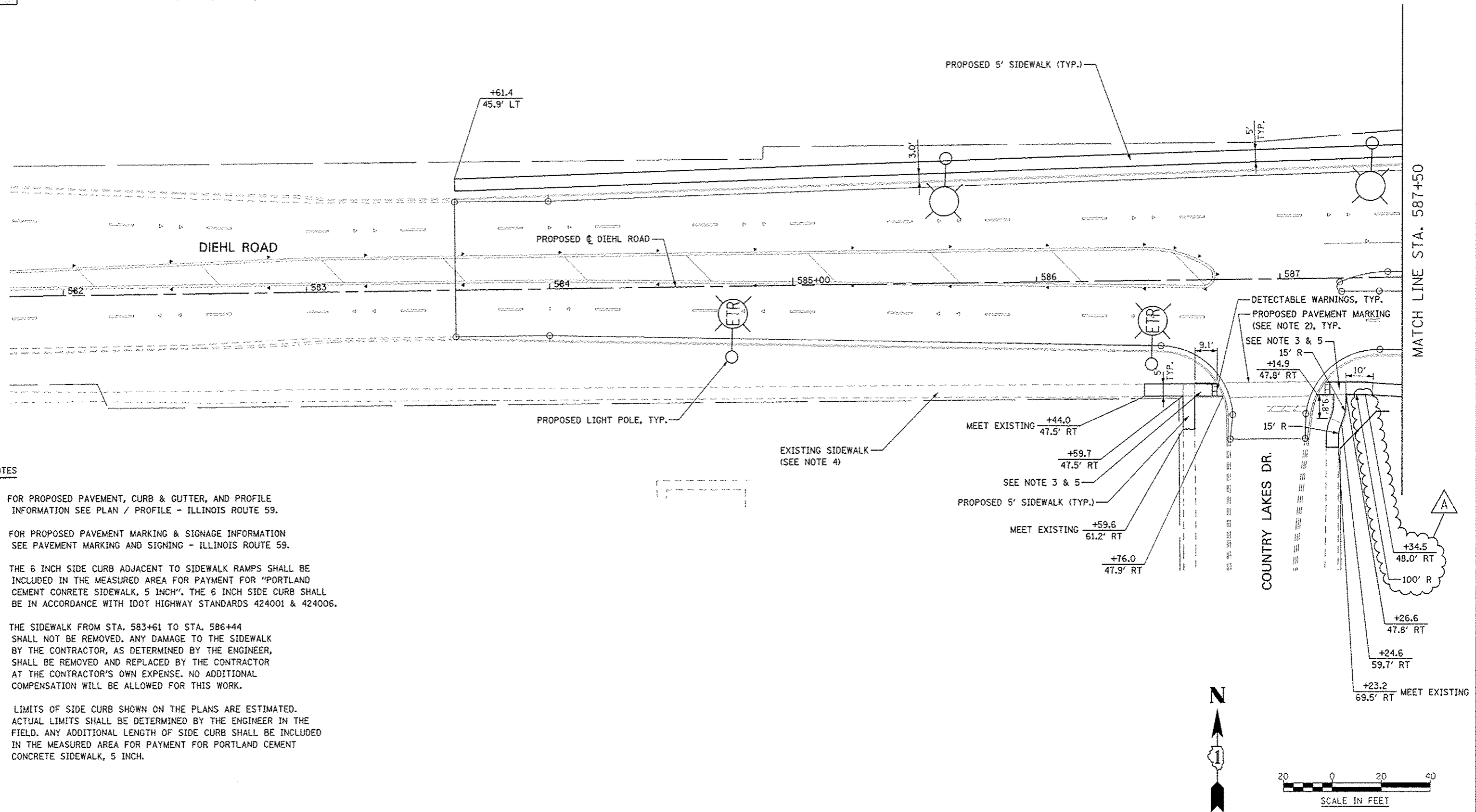


**LEGEND**

-  DETECTABLE WARNINGS
-  PORTLAND CEMENT CONCRETE SIDEWALK 5 INCH
-  PORTLAND CEMENT CONCRETE SIDEWALK 8 INCH
-  PORTLAND CEMENT CONCRETE SIDEWALK 10 INCH, SPECIAL



**NOTES**

1. FOR PROPOSED PAVEMENT, CURB & GUTTER, AND PROFILE INFORMATION SEE PLAN / PROFILE - ILLINOIS ROUTE 59.
2. FOR PROPOSED PAVEMENT MARKING & SIGNAGE INFORMATION SEE PAVEMENT MARKING AND SIGNING - ILLINOIS ROUTE 59.
3. THE 6 INCH SIDE CURB ADJACENT TO SIDEWALK RAMPS SHALL BE INCLUDED IN THE MEASURED AREA FOR PAYMENT FOR "PORTLAND CEMENT CONCRETE SIDEWALK, 5 INCH". THE 6 INCH SIDE CURB SHALL BE IN ACCORDANCE WITH IDOT HIGHWAY STANDARDS 424001 & 424006.
4. THE SIDEWALK FROM STA. 583+61 TO STA. 586+44 SHALL NOT BE REMOVED. ANY DAMAGE TO THE SIDEWALK BY THE CONTRACTOR, AS DETERMINED BY THE ENGINEER, SHALL BE REMOVED AND REPLACED BY THE CONTRACTOR AT THE CONTRACTOR'S OWN EXPENSE. NO ADDITIONAL COMPENSATION WILL BE ALLOWED FOR THIS WORK.
5. LIMITS OF SIDE CURB SHOWN ON THE PLANS ARE ESTIMATED. ACTUAL LIMITS SHALL BE DETERMINED BY THE ENGINEER IN THE FIELD. ANY ADDITIONAL LENGTH OF SIDE CURB SHALL BE INCLUDED IN THE MEASURED AREA FOR PAYMENT FOR PORTLAND CEMENT CONCRETE SIDEWALK, 5 INCH.

	DESIGNED <i>PJD</i>	REVISED - ADDENDUM A 02/22/2013	<b>STATE OF ILLINOIS DEPARTMENT OF TRANSPORTATION</b>	<b>SIDEWALK / SHARED-USE PATH DETAILS DIEHL ROAD</b>	F.A.P. RTE.	SECTION	COUNTY	TOTAL SHEETS	SHEET NO.	
	DRAWN <i>KES</i>	REVISED -			338	(112 & 113) WRS-6	DUPAGE	734	228	
	CHECKED <i>JCM</i>	REVISED -			CONTRACT NO. 60R31					
	DATE <i>12/14/2012</i>	REVISED -			ILLINOIS FED. AID PROJECT					
SCALE: AS SHOWN   SHEET NO. 14 OF 19 SHEETS   STA. 582+00 TO STA. 587+50										