

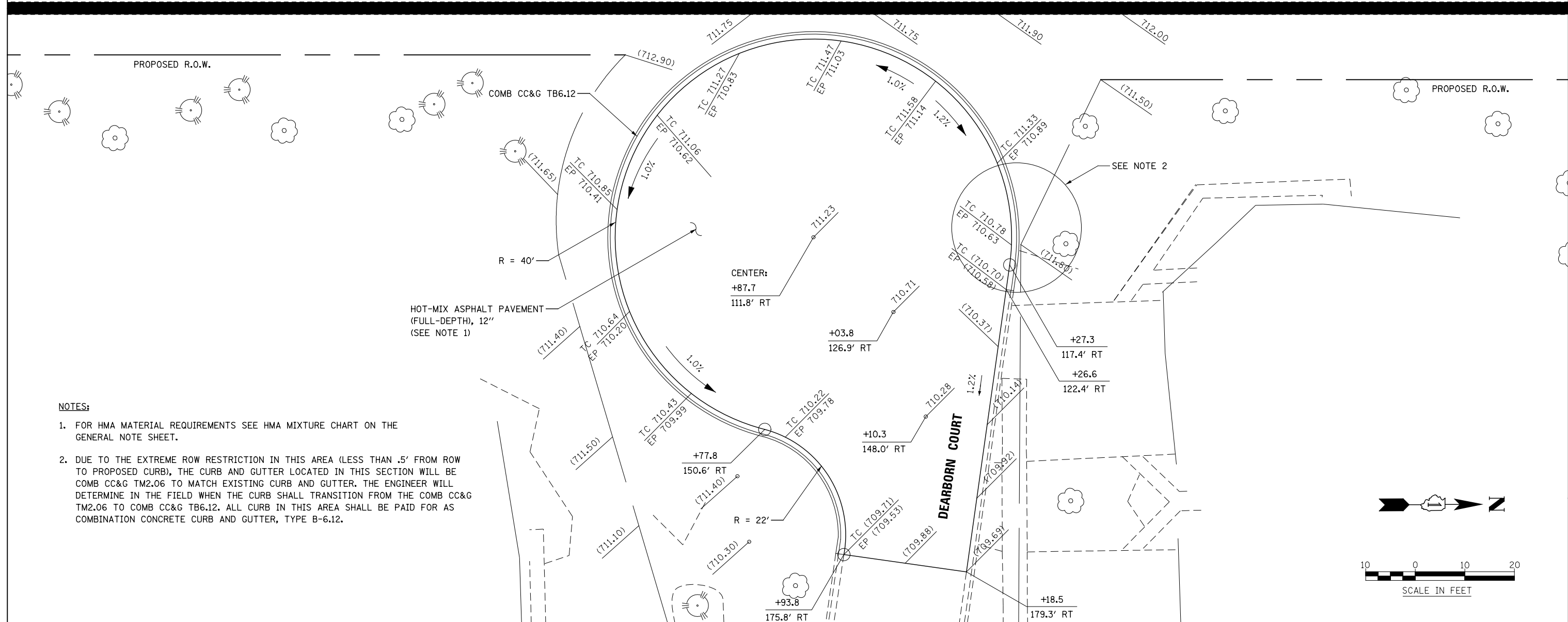
3996

3997

3998

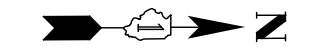
PROPOSED CL ILLINOIS ROUTE 59

ILLINOIS ROUTE 59



NOTES:

- 1. FOR HMA MATERIAL REQUIREMENTS SEE HMA MIXTURE CHART ON THE GENERAL NOTE SHEET.
- 2. DUE TO THE EXTREME ROW RESTRICTION IN THIS AREA (LESS THAN .5' FROM ROW TO PROPOSED CURB), THE CURB AND GUTTER LOCATED IN THIS SECTION WILL BE COMB CC&G TM2.06 TO MATCH EXISTING CURB AND GUTTER. THE ENGINEER WILL DETERMINE IN THE FIELD WHEN THE CURB SHALL TRANSITION FROM THE COMB CC&G TM2.06 TO COMB CC&G TB6.12. ALL CURB IN THIS AREA SHALL BE PAID FOR AS COMBINATION CONCRETE CURB AND GUTTER, TYPE B-6.12.



SCALE IN FEET

DESIGNED	PJO	REVISED	-
DRAWN	KES	REVISED	-
CHECKED	JCM	REVISED	-
DATE	12/14/2012	REVISED	-

STATE OF ILLINOIS
DEPARTMENT OF TRANSPORTATION

CUL-DE-SAC DETAIL
DEARBORN COURT

SCALE: AS SHOWN SHEET NO. 3 OF 13 SHEETS STA. TO STA.

F.A.P. RTE.	SECTION	COUNTY	TOTAL SHEETS	SHEET NO.
338	(112 & 113) WRS-6	DUPAGE	734	241
CONTRACT NO. 60R31				
ILLINOIS FED. AID PROJECT				