
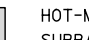
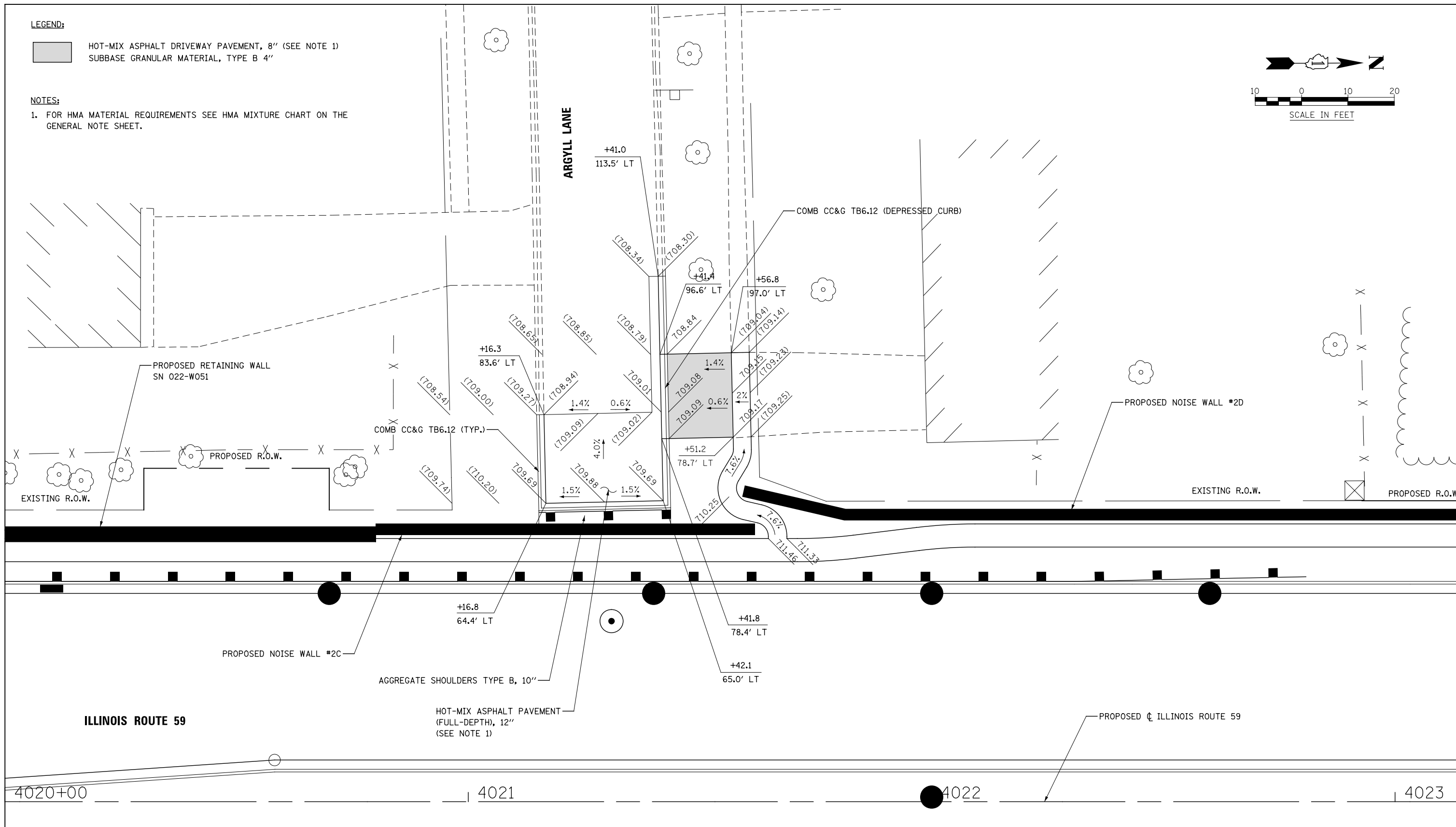
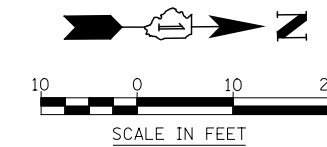


**LEGEND:**

-  HOT-MIX ASPHALT DRIVEWAY PAVEMENT, 8" (SEE NOTE 1)
-  SUBBASE GRANULAR MATERIAL, TYPE B 4"

**NOTES:**

1. FOR HMA MATERIAL REQUIREMENTS SEE HMA MIXTURE CHART ON THE GENERAL NOTE SHEET.



DESIGNED	PJO	REVISED	-
DRAWN	KES	REVISED	-
CHECKED	JCM	REVISED	-
DATE	12/14/2012	REVISED	-

**STATE OF ILLINOIS  
DEPARTMENT OF TRANSPORTATION**

**INTERSECTION DETAIL  
ILLINOIS ROUTE 59 AND ARGYLL LANE**

SCALE: AS SHOWN | SHEET NO. 6 OF 13 SHEETS | STA. TO STA.

F.A.P. RTE.	SECTION	COUNTY	TOTAL SHEETS	SHEET NO.
338	(112 & 113) WRS-6	DUPAGE	734	244
CONTRACT NO. 60R31				
ILLINOIS FED. AID PROJECT				