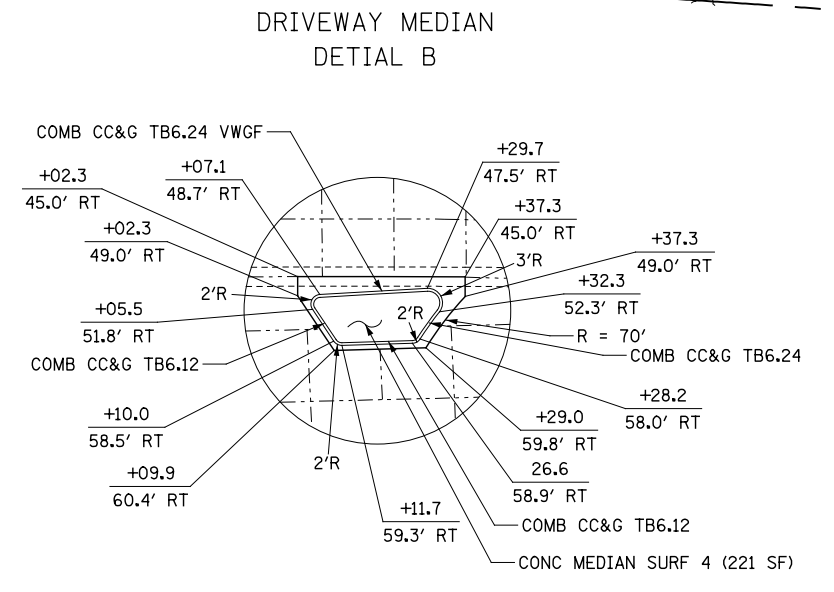
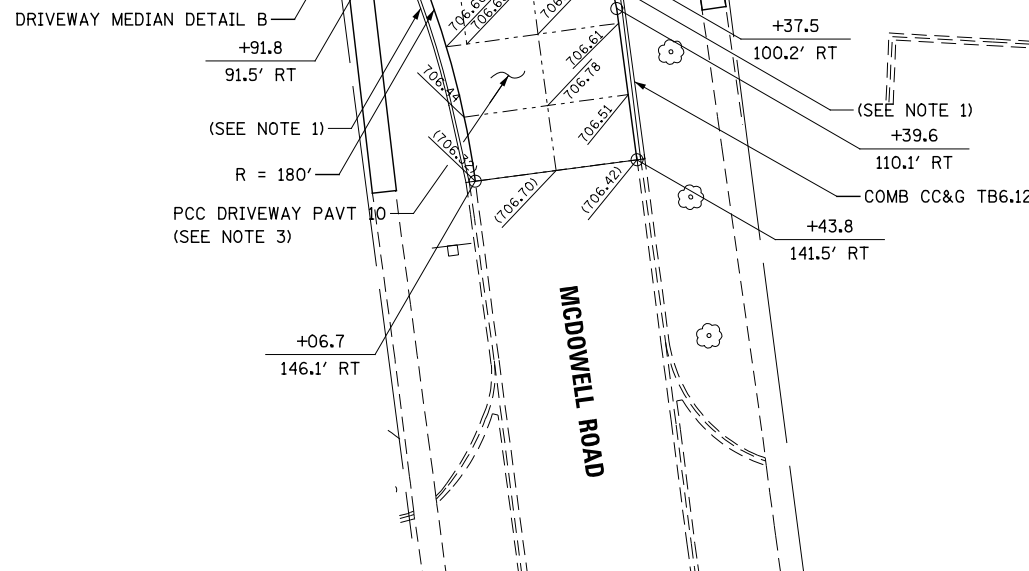
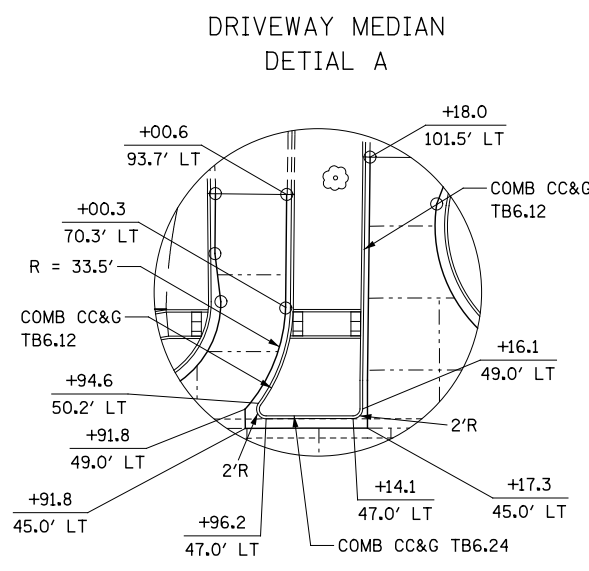
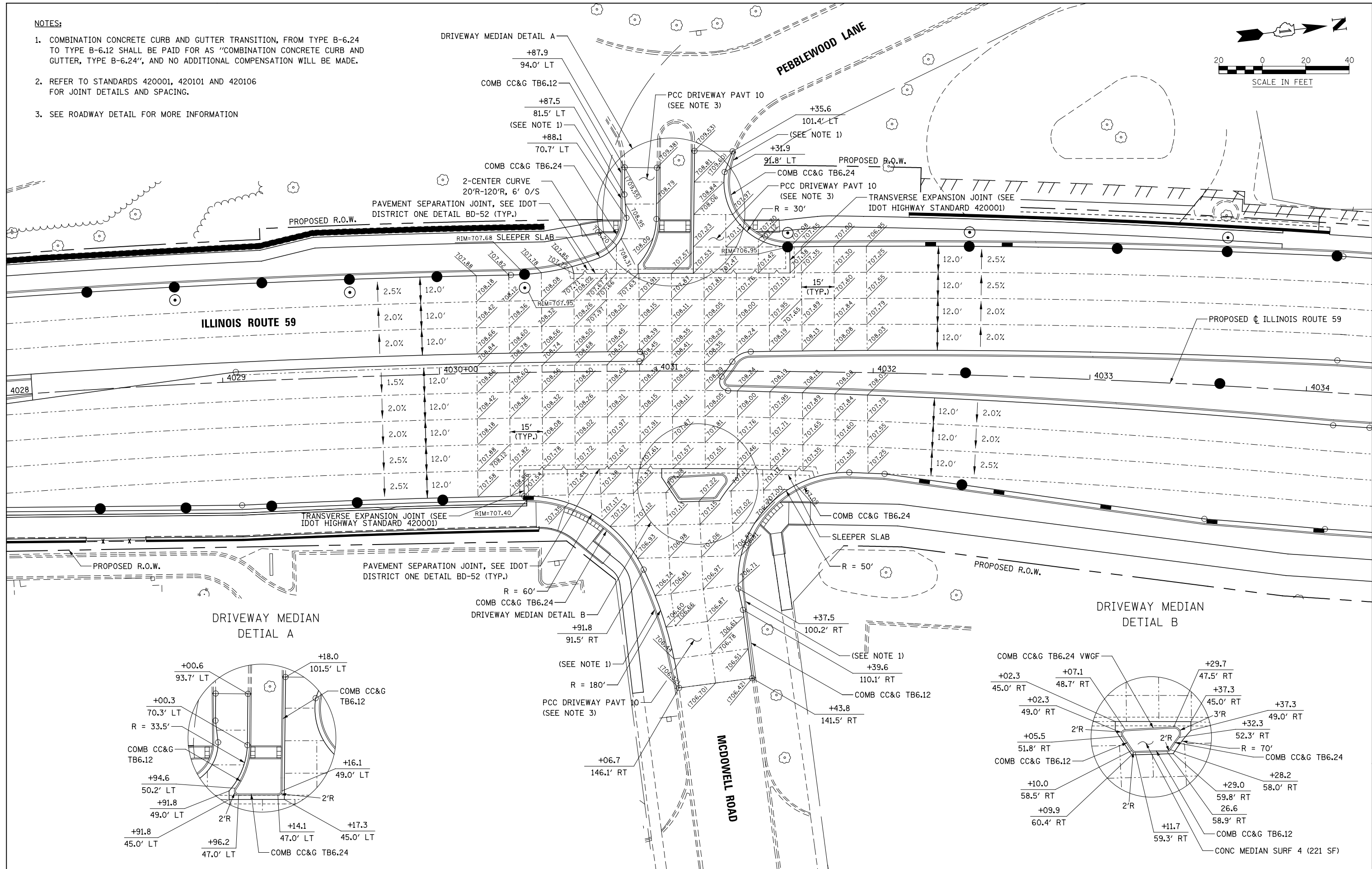
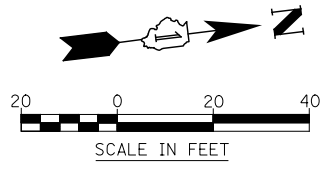


NOTES:

1. COMBINATION CONCRETE CURB AND GUTTER TRANSITION, FROM TYPE B-6.24 TO TYPE B-6.12 SHALL BE PAID FOR AS "COMBINATION CONCRETE CURB AND GUTTER, TYPE B-6.24", AND NO ADDITIONAL COMPENSATION WILL BE MADE.
2. REFER TO STANDARDS 420001, 420101 AND 420106 FOR JOINT DETAILS AND SPACING.
3. SEE ROADWAY DETAIL FOR MORE INFORMATION



DESIGNED	PJO	REVISED	-
DRAWN	KES	REVISED	-
CHECKED	JCM	REVISED	-
DATE	12/14/2012	REVISED	-

**STATE OF ILLINOIS
DEPARTMENT OF TRANSPORTATION**

**INTERSECTION DETAIL
ILLINOIS ROUTE 59 AND MCDOWELL RD./PEBBLEWOOD LN.**

F.A.P. RTE.	SECTION	COUNTY	TOTAL SHEETS	SHEET NO.
338	(112 & 113) WRS-6	DUPAGE	734	246
CONTRACT NO. 60R31				
ILLINOIS FED. AID PROJECT				

SCALE: AS SHOWN SHEET NO. 8 OF 13 SHEETS STA. TO STA.