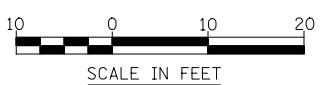
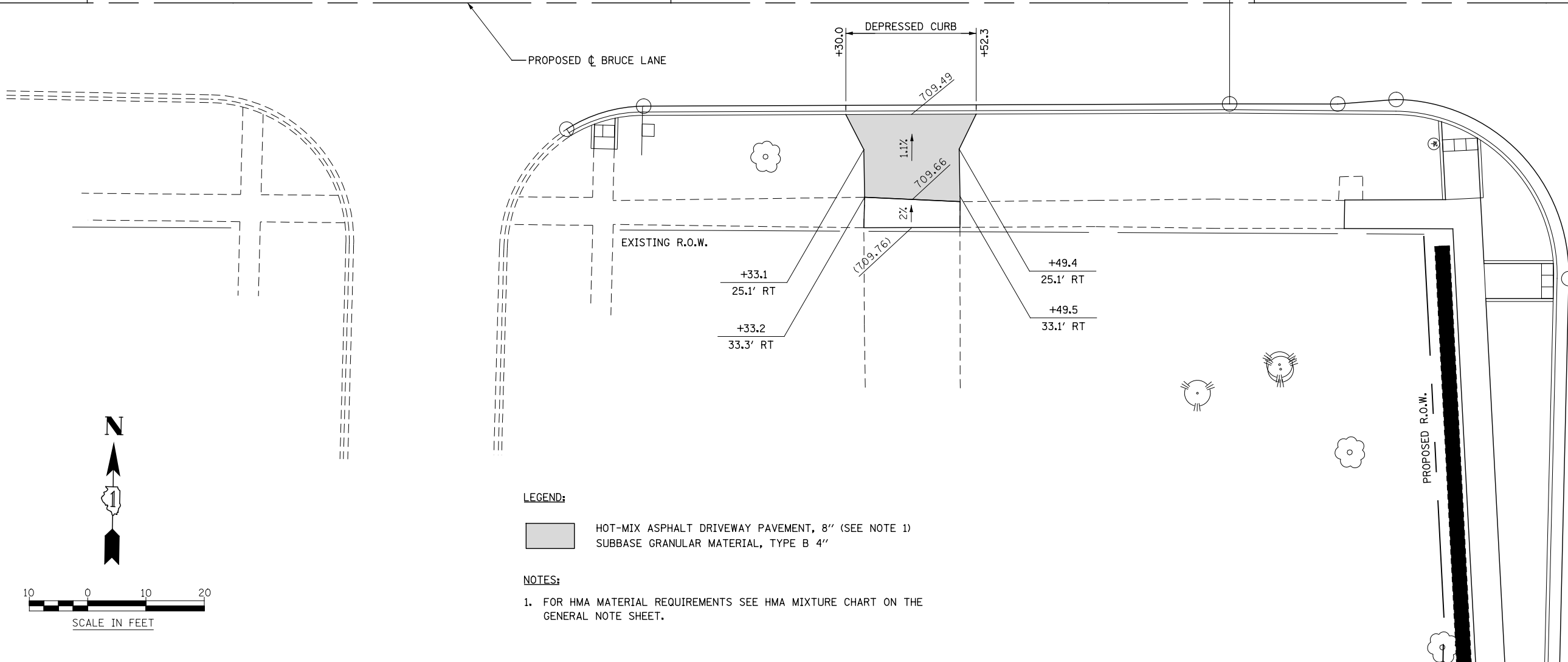
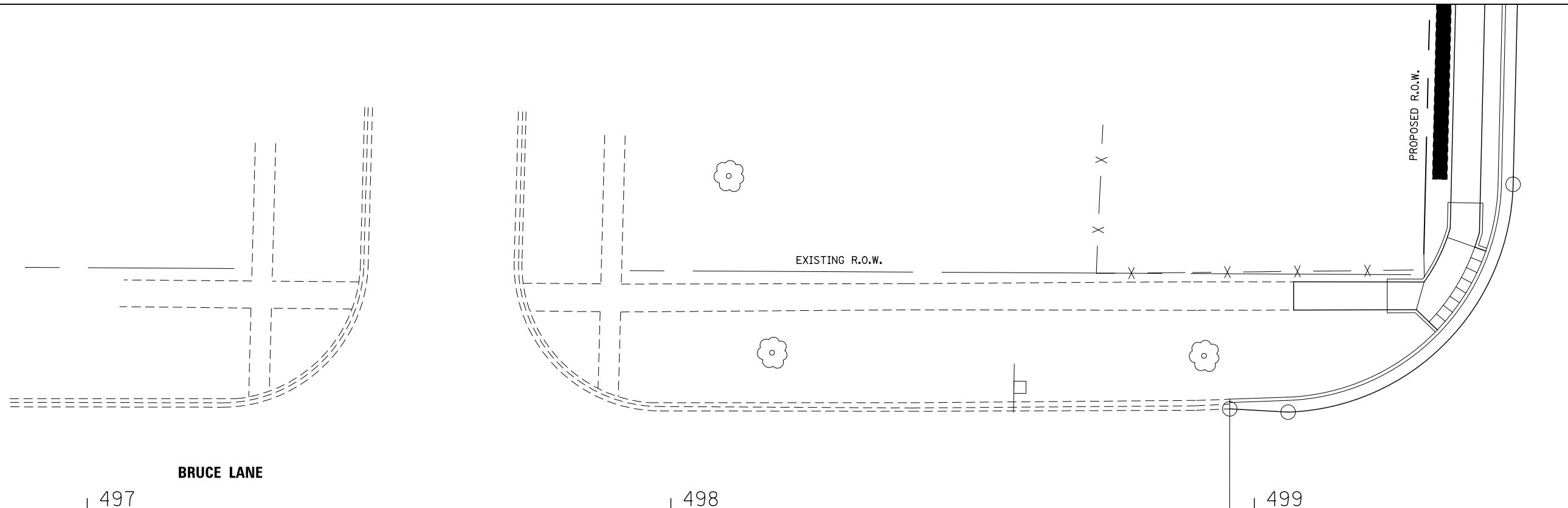


ILLINOIS ROUTE 59



LEGEND:

- HOT-MIX ASPHALT DRIVEWAY PAVEMENT, 8" (SEE NOTE 1)
- SUBBASE GRANULAR MATERIAL, TYPE B 4"

NOTES:

1. FOR HMA MATERIAL REQUIREMENTS SEE HMA MIXTURE CHART ON THE GENERAL NOTE SHEET.

DESIGNED	PJO	REVISED	-
DRAWN	KES	REVISED	-
CHECKED	JCM	REVISED	-
DATE	12/14/2012	REVISED	-

**STATE OF ILLINOIS
DEPARTMENT OF TRANSPORTATION**

**DRIVEWAY DETAILS
BRUCE LANE - STA 498+41**

SCALE: AS SHOWN SHEET NO. 9 OF 16 SHEETS STA. TO STA.

F.A.P. RTE.	SECTION	COUNTY	TOTAL SHEETS	SHEET NO.
338	(112 & 113) WRS-6	DUPAGE	734	260
CONTRACT NO. 60R31				

ILLINOIS FED. AID PROJECT

4013