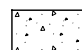

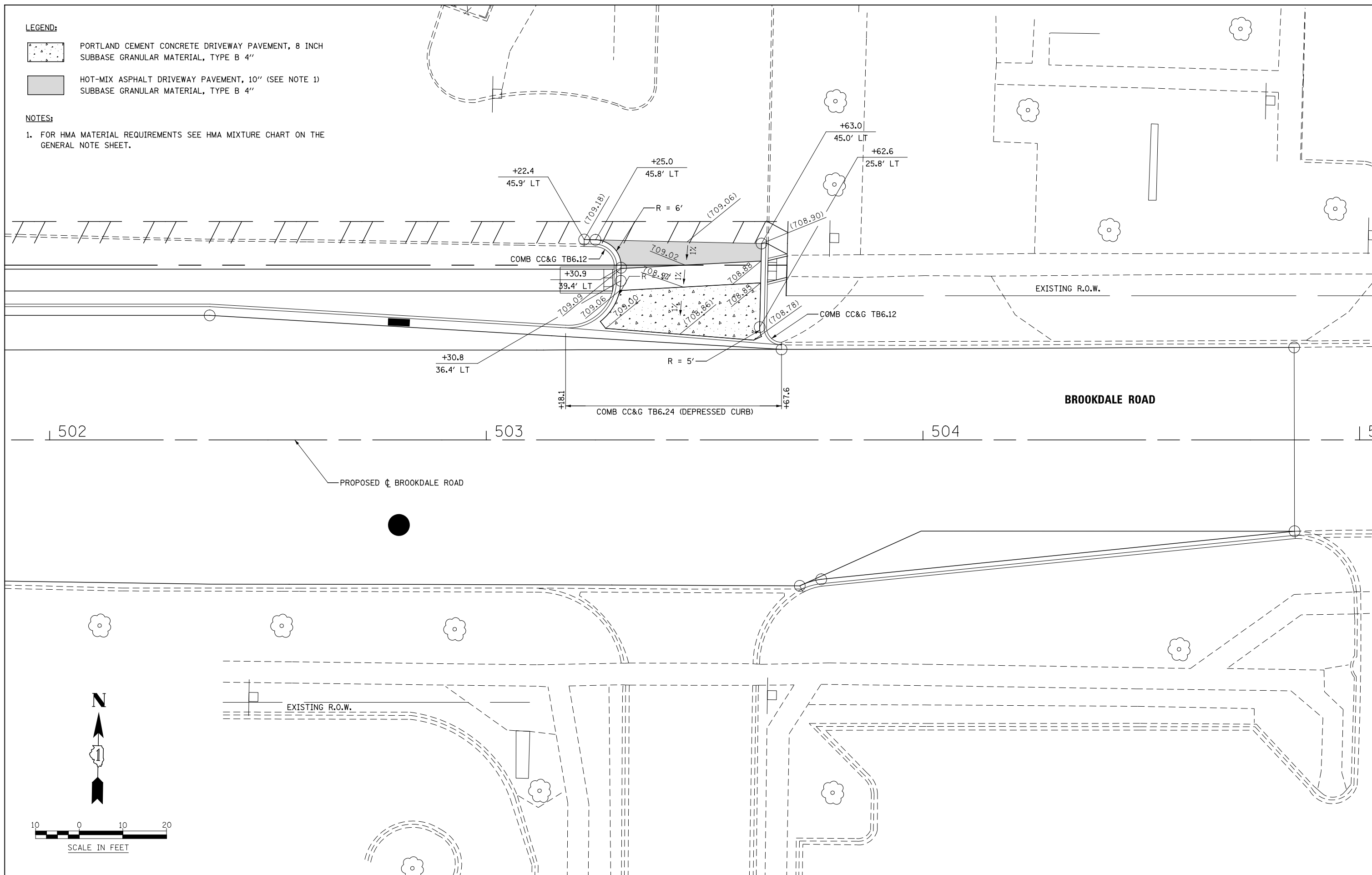


LEGEND:

-  PORTLAND CEMENT CONCRETE DRIVEWAY PAVEMENT, 8 INCH
SUBBASE GRANULAR MATERIAL, TYPE B 4"
-  HOT-MIX ASPHALT DRIVEWAY PAVEMENT, 10" (SEE NOTE 1)
SUBBASE GRANULAR MATERIAL, TYPE B 4"

NOTES:

1. FOR HMA MATERIAL REQUIREMENTS SEE HMA MIXTURE CHART ON THE GENERAL NOTE SHEET.



DESIGNED	PJO	REVISED	-
DRAWN	KES	REVISED	-
CHECKED	JCM	REVISED	-
DATE	12/14/2012	REVISED	-

**STATE OF ILLINOIS
DEPARTMENT OF TRANSPORTATION**

**DRIVEWAY DETAILS
BROOKDALE ROAD - STA 503+46**

SCALE: AS SHOWN | SHEET NO. 10 OF 16 SHEETS | STA. TO STA.

F.A.P. RTE.	SECTION	COUNTY	TOTAL SHEETS	SHEET NO.
338	(112 & 113) WRS-6	DUPAGE	734	261
CONTRACT NO. 60R31				
ILLINOIS FED. AID PROJECT				