

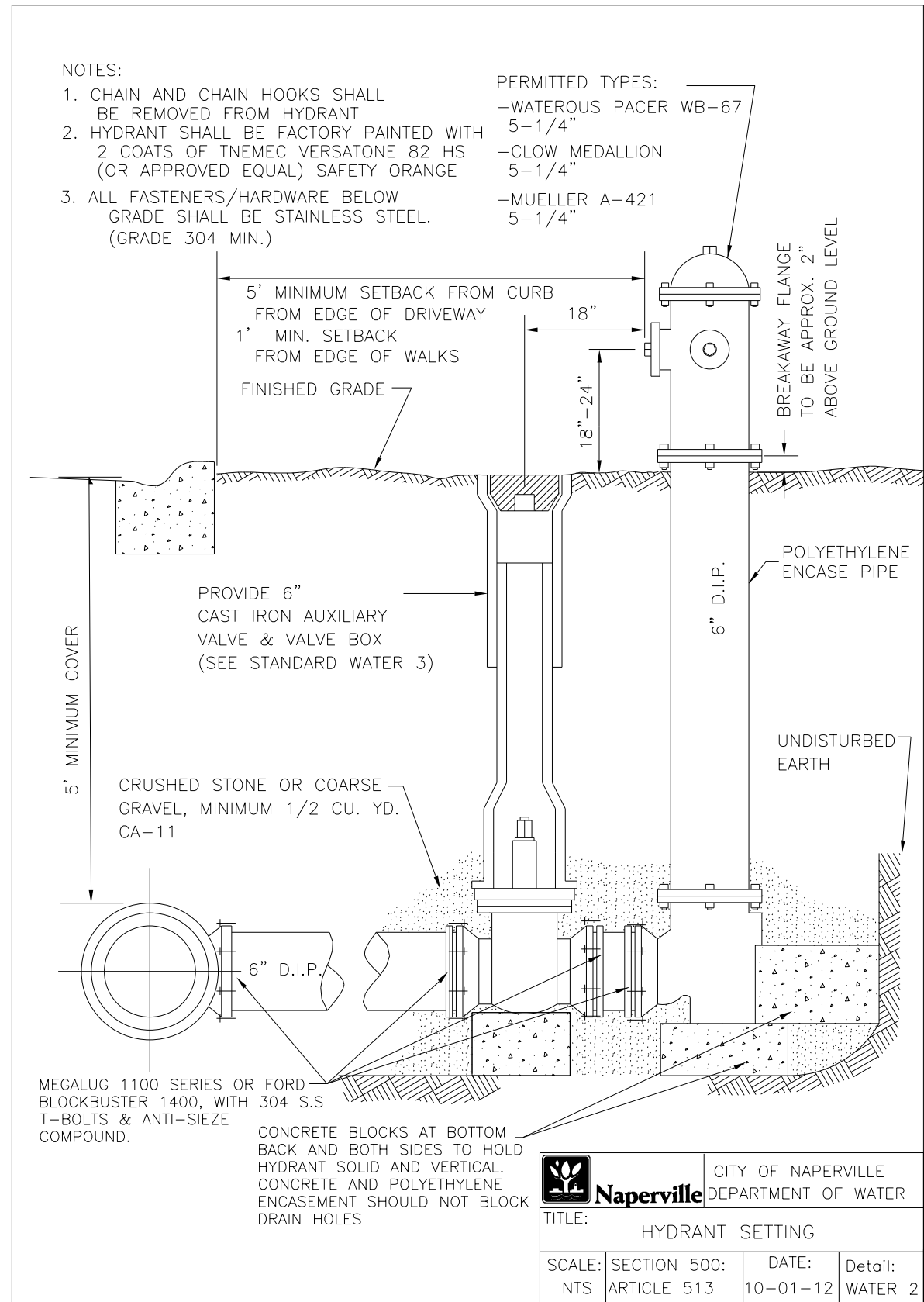
- NOTES:
- CORPORATION IS TO BE FLARING TYPE (FORD F-600 OR EQUAL BY MUELLER OR A.Y. MCDONALD). FOR SERVICE SIZE 1 1/4": A.Y. MCDONALD 4701Q CORP STOP THREADED INLET TO COMPRESSION OUTLET OR EQUAL
 - 1/8" BEND ELBOW - FEMALE FLARE TO COMPRESSION: FORD LA04. OR AN APPROVED EQUAL BY MUELLER, OR A.Y. MCDONALD (NOT AVAILABLE IN IN 1 1/4" SIZED SEE NOTE 1.)
 - CURB BOX IS ARCH PATTERN WITH 1-1/4" UPPER SECTION, WITH 1-1/4" BRASS PENTAGON PLUG.
 - CURB STOP IS WITH COMPRESSION COUPLING - FORD B44 CURB STOP, OR EQUAL BY MUELLER, OR A.Y. MCDONALD.
 - B-BOX HAS 1 1/4" THREADED BRASS PENTAGON PLUG WITH THE WORD "WATER" IN RAISED LETTERS ON CAP. (1-1/4" PENT. PLUG FOR 1-1/4" ID. B-BOXES).
 - CORPORATION STOPS SHALL BE INSTALLED A MINIMUM OF 18" FROM PIPE JOINTS AND ENDS. MULTIPLE INSTALLATIONS SHOULD BE STAGGERED AROUND THE MAIN BY 22-1/2' AND SEPARATED FROM EACH OTHER BY 18".
 - WATER SERVICE LINE SMALLER THAN 3" SHALL BE TYPE K COPPER. IF JOINTS ARE REQUIRED DUE TO LENGTH OF SERVICE, THEN ONLY COMPRESSION TYPE COUPLING SHALL BE PERMITTED. NO SOLDERED OR FLARED TYPE JOINTS ARE ALLOWED.
 - SERVICE TAPS SHALL REQUIRE SADDLES IN ACCORDANCE WITH CHART BELOW. SADDLES SHALL BE STAINLESS STEEL DUAL BANDED, DUCTILE IRON OR BRASS SADDLE (FORD FS202, 202BS OR APPROVED EQUAL) REQ'D FOR TAPS.

WATER MAIN SIZE	TAP SIZE	CONNECTION TYPE
6"Ø OR SMALLER	1"Ø OR SMALLER	DIRECT CONNECTION
	1 1/4"Ø OR LARGER	SADDLE CONNECTION
8"Ø OR LARGER	1 1/4"Ø OR SMALLER	DIRECT CONNECTION
	1 1/2"Ø OR LARGER	SADDLE CONNECTION

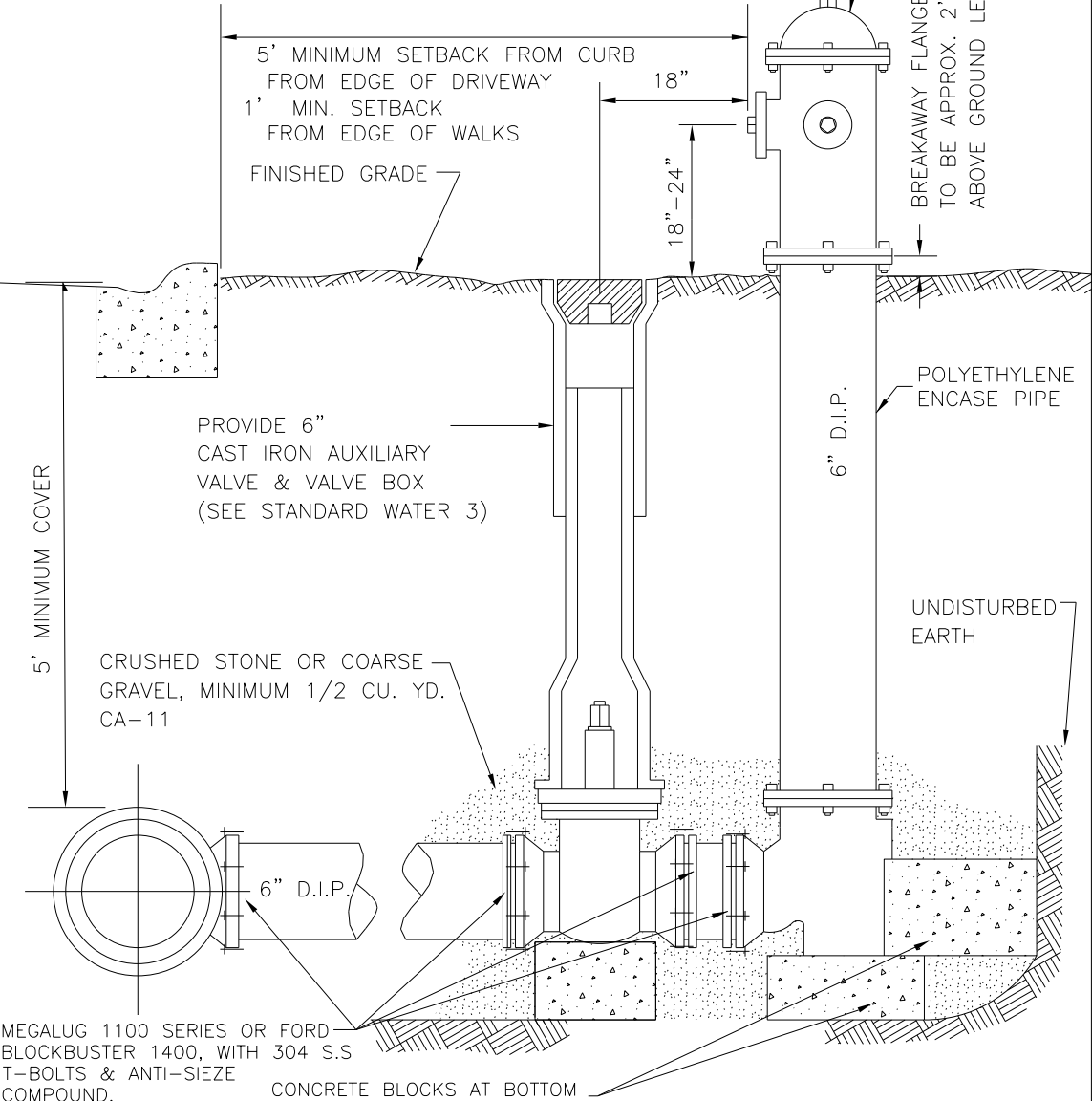
Naperville CITY OF NAPERVILLE DEPARTMENT OF WATER

TITLE: SERVICE TAP AND CONNECTION

SCALE: SECTION 500: DATE: Detail: NTS ARTICLE 512.5 10-01-12 WATER 1



- NOTES:
- CHAIN AND CHAIN HOOKS SHALL BE REMOVED FROM HYDRANT
 - HYDRANT SHALL BE FACTORY PAINTED WITH 2 COATS OF TNEC VERSATONE 82 HS (OR APPROVED EQUAL) SAFETY ORANGE
 - ALL FASTENERS/HARDWARE BELOW GRADE SHALL BE STAINLESS STEEL. (GRADE 304 MIN.)
- PERMITTED TYPES:
- WATEROUS PACER WB-67 5-1/4"
 - CLOW MEDALLION 5-1/4"
 - MUELLER A-421 5-1/4"



Naperville CITY OF NAPERVILLE DEPARTMENT OF WATER

TITLE: HYDRANT SETTING

SCALE: SECTION 500: DATE: Detail: NTS ARTICLE 513 10-01-12 WATER 2