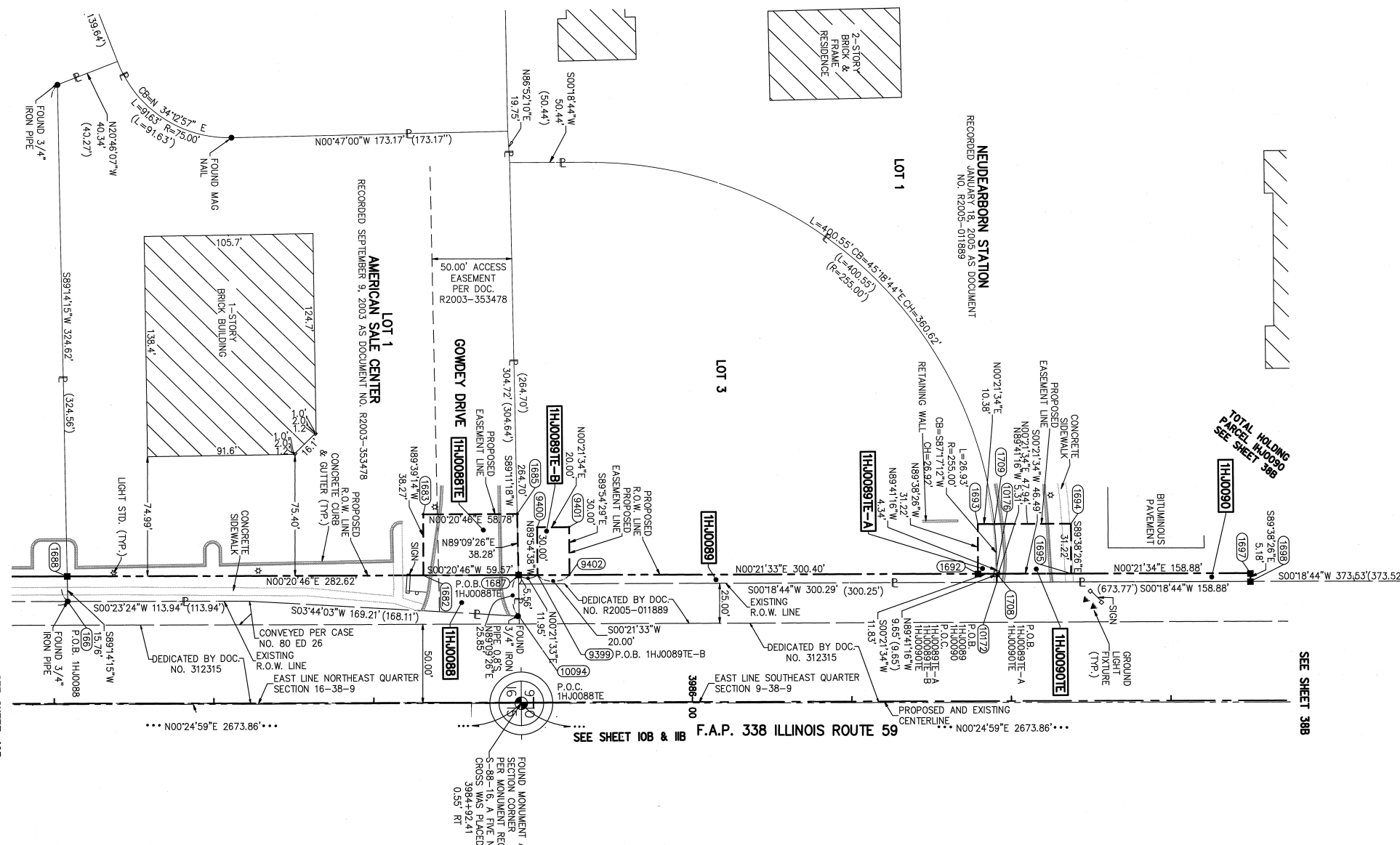
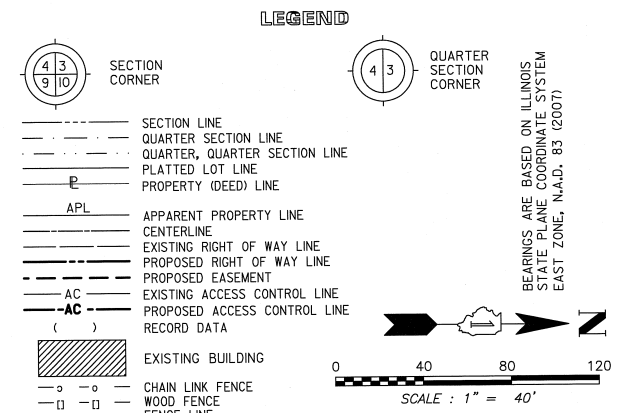


PART OF THE SOUTHEAST 1/4 SECTION 9 AND THE NORTHEAST 1/4 SECTION 16, T38N, R9E OF THE 3rd PM, NAPERVILLE TOWNSHIP, DUPAGE COUNTY, ILLINOIS.

PARCEL NUMBER	OWNER	TOTAL HOLDING ACRES	PART TAKEN ACRES	REMAINDER ACRES	PREV. DED. ACRES	EASEMENT ACRES	EASEMENT PURPOSE	PERMANENT TAX INDEX NUMBER	PROPERTY ACQUIRED BY
1HJ0088	NORTH PLAZA PARTNERS, LLC, AN ILLINOIS LIMITED LIABILITY COMPANY	1.970	0.122	1.848		0.052	DRIVEWAY RECONSTRUCTION	07-16-207-001	
1HJ0089	NEWDEARBORN STATION CONDOMINIUM ASSOCIATION	1.520	0.038	1.482		A=0.008 (356 SQ FT)	DRIVEWAY RECONSTRUCTION	07-09-408-048	
1HJ0089TE-A	AN ILLINOIS NOT-FOR-PROFIT CORPORATION					B=0.014	CONSTRUCTION		
1HJ0089TE-B									
1HJ0090	NEUMANN HOMES, INC.	8.436	0.019	8.417		0.034	DRIVEWAY RECONSTRUCTION	07-09-408-050	
1HJ0090TE									

COORDINATE TABLE				
NO.	STATION	OFFSET	NORTH	EAST
1688	3982+08.11	80.00 LT	863603.3591	19039.4306
166	3982+08.42	64.25 LT	863603.5688	19055.1863
9397	3984+31.16	118.27 LT	863826.6336	19002.5089
1682	3984+31.16	80.00 LT	863826.4024	19010.5682
1683	3984+31.16	110.21 LT	863826.5849	19002.8640
9398	3984+89.94	118.27 LT	863885.4117	19002.8640
1685	3984+90.11	110.23 LT	863885.5300	19010.9050
1687	3984+90.73	80.00 LT	863885.9748	19041.1381
10094	3984+91.27	54.16 LT	863886.3549	19066.9820
9400	3985+02.52	110.00 LT	863897.9676	19011.2123
9399	3985+02.66	80.00 LT	863897.9208	19041.2130
9401	3985+22.52	110.00 LT	863917.9672	19011.3378
9402	3985+22.66	80.00 LT	863917.9191	19041.3384
1693	3987+79.29	111.22 LT	864174.7398	19011.7280
1692	3987+79.29	80.00 LT	864174.5440	19042.9474
1709	3987+89.67	111.22 LT	864185.1212	19011.7931
10176	3987+91.11	84.34 LT	864186.3955	19038.6820
10172	3987+91.12	74.69 LT	864186.3429	19048.3310
1708	3987+91.12	80.00 LT	864186.3719	19043.0216
1695	3988+37.61	80.00 LT	864232.8629	19043.3131
1694	3988+37.61	111.22 LT	864233.0587	19012.0937
1698	3989+50.00	74.82 LT	864345.2182	19049.1971
1697	3989+50.00	80.00 LT	864345.2507	19044.0179



STATE OF ILLINOIS)
 COUNTY OF DUPAGE)

THIS IS TO CERTIFY THAT WE, MIDWEST TECHNICAL CONSULTANTS, INC., AN ILLINOIS PROFESSIONAL DESIGN FIRM NUMBER 184-002917, HAVE SURVEYED THE PLAT OF HIGHWAYS SHOWN HEREON BETWEEN SECTION 9, TOWNSHIP 38 NORTH, RANGE 9 EAST, AND SECTION 16, TOWNSHIP 38 NORTH, RANGE 9 EAST OF THE THIRD PRINCIPAL MERIDIAN, DUPAGE COUNTY, THAT THE SURVEY IS TRUE AND COMPLETE AS SHOWN TO THE BEST OF MY KNOWLEDGE AND BELIEF, THAT THE PLAT CORRECTLY REPRESENTS SAID SURVEY, THAT ALL MONUMENTS FOUND AND ESTABLISHED ARE OF PERMANENT QUALITY AND OCCUPY THE POSITIONS SHOWN THEREON AND THAT THE MONUMENTS ARE SUFFICIENT TO ENABLE THE SURVEY TO BE RETRACED. THIS SURVEY CONFORMS TO THE CURRENT ILLINOIS MINIMUM STANDARDS FOR A BOUNDARY SURVEY. MADE FOR THE DEPARTMENT OF TRANSPORTATION, STATE OF ILLINOIS.

DATED AT NAPERVILLE, ILLINOIS THIS ____ DAY OF _____, 2011 A.D.

RUSSELL W. OLSEN
 ILLINOIS PROFESSIONAL LAND SURVEYOR NO. 035-002718
 LICENSE EXPIRES NOVEMBER 30, 2012
 THIS PROFESSIONAL SERVICE CONFORMS TO THE CURRENT ILLINOIS MINIMUM STANDARDS FOR A BOUNDARY SURVEY.

Midwest Technical Consultants, Inc.
 1805 N. MILL STREET, SUITE L
 Naperville, ILLINOIS 60563
 (630)505-0101

NOTES:
 1) ALL COORDINATES SHOWN HEREON ARE PROJECT. ALL DISTANCES SHOWN HEREON ARE GROUND.
 2) BEARINGS SHOWN HEREON ARE BASED ON ILLINOIS STATE PLANE COORDINATE SYSTEM EAST ZONE, NAD 83, (2007).
 3) THE COMBINATION FACTOR USED FOR THIS PROJECT = 0.99994777.
 4) COORDINATE CONVERSION
 NAD83 (2007) STATE PLANE COORDINATES TO PROJECT COORDINATES:
 A) DIVIDE THE STATE PLANE NAD83 GRID COORDINATES BY THE COMBINATION FACTOR
 B) SUBTRACT 1,000,000.00 FROM THESE NORTHINGS AND EASTINGS.
 PROJECT COORDINATES TO NAD83 (2007) STATE PLANE COORDINATES:
 A) ADD 1,000,000.00 TO THE PROJECT NORTHINGS AND EASTINGS.
 B) MULTIPLY THESE COORDINATES BY THE COMBINATION FACTOR.
 5) THE NGS MONUMENT HELD FOR THIS PROJECT IS IS FIRST ORDER P.I.D. AA3730.

RECEIVED
 NOV 21 2011
 PLATS & LEGALS

PLAT OF HIGHWAYS
 STATE OF ILLINOIS
 DEPARTMENT OF TRANSPORTATION
 F.A.P. 338 ILLINOIS ROUTE 59
 SECTION FERRY RD. TO AURORA AVE. DUPAGE COUNTY
 PROJECT: ROUTE 59 JOB NO. R-91-035-09
 STATION 3982+00 TO STATION 3989+50
 SCALE: 1" = 40' SHEET 39B OF 47

BUREAU OF LAND ACQUISITION
 201 WEST CENTER COURT
 SCHAUMBURG, ILLINOIS 60196-1096

F.A.P. 338 ILLINOIS ROUTE 59, SECTION FERRY RD. TO AURORA AVE., JOB. NO. R-91-035-09.

REVISION DATE: SEPTEMBER 29, 2011 REVISION: CORRECT AREA FOR 1HJ0090TE
 REVISION DATE: JULY 11, 2011 REVISION: REVISE 1HJ0088TE, 1HJ0089TE-A, 1HJ0089TE-B

MADE BY: JB

CONTRACT 60R31 SHEET 368 OF 734