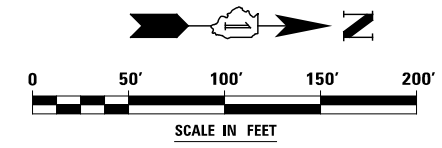
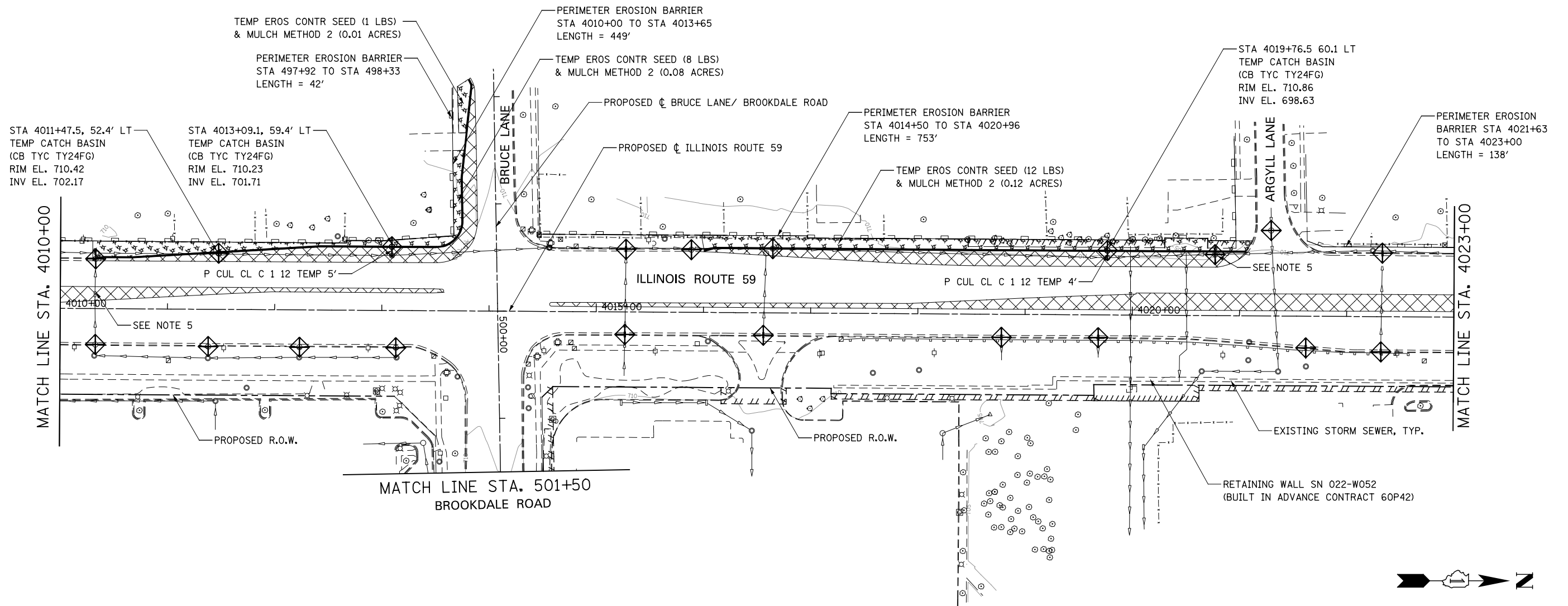


**EROSION CONTROL LEGEND**

|  |  |  |   |
|--|--|--|---|
|  | TEMPORARY EROSION CONTROL SEEDING AND MULCH METHOD 2                                 |  | TEMPORARY DITCH CHECK                               |
|  | TEMPORARY EROSION CONTROL SEEDING AND TEMPORARY EROSION CONTROL BLANKET              |  | TEMPORARY DITCH CHECK INSTALLED IN PREVIOUS STAGE   |
|  | PERMANENT SEEDING (SEE NOTE 3)   |  | INLET & PIPE PROTECTION                             |
|  | TEMPORARY EROSION CONTROL SEEDING OR PERMANENT SEEDING INSTALLED IN A PREVIOUS STAGE |  | INLET & PIPE PROTECTION INSTALLED IN PREVIOUS STAGE |
|  | TEMPORARY PAVEMENT   |  | FLOW DIRECTION (SEE NOTE 4)                         |
|  | PERIMETER EROSION BARRIER (SEE NOTE 2)   |  | PROPOSED STORM SEWER (SEE NOTE 1)                   |
|  | PERIMETER EROSION BARRIER INSTALLED IN PREVIOUS STAGE                                |  | PROPOSED STORM SEWER INSTALLED IN PREVIOUS STAGE    |
|  | INLET FILTER   |  | TEMPORARY PIPE CULVERT                              |
|  | INLET FILTER INSTALLED IN PREVIOUS STAGE   |  | PERMANENT DRAINAGE STRUCTURE NUMBER (SEE NOTE 1)    |

**NOTES**

1. SEE PROPOSED DRAINAGE PLANS FOR STORM SEWER INFORMATION.
2. PERIMETER EROSION BARRIER SHALL BE ERECTED ADJACENT TO R.O.W., EASEMENT, AND CONSTRUCTION LIMITS AND AS DIRECTED BY THE ENGINEER.
3. SEE LANDSCAPING PLANS FOR LANDSCAPING REQUIREMENTS.
4. SEE PRE-STAGE CROSS SECTIONS FOR GRADING INFORMATION.
5. REMOVE INLETS/CATCH BASINS/MANHOLES TO MAINTAIN FLOW.



|   |           |   |   |                          |                              |                           |                   |              |           |     |
|---|-----------|---|---|--------------------------|------------------------------|---------------------------|-------------------|--------------|-----------|-----|
| DESIGNED <i>PJO</i><br>DRAWN <i>KES</i><br>CHECKED <i>JCM</i><br>DATE <i>12/14/2012</i> | REVISED - | <b>STATE OF ILLINOIS<br/>DEPARTMENT OF TRANSPORTATION</b> | <b>EROSION CONTROL - PRE STAGE 1, 1A AND 1B<br/>ILLINOIS ROUTE 59</b> |                          | F.A.P. RTE.                  | SECTION                   | COUNTY            | TOTAL SHEETS | SHEET NO. |     |
|   | REVISED - |   | SCALE: AS SHOWN   | SHEET NO. 3 OF 40 SHEETS | STA. 4010+00 TO STA. 4023+00 | 338                       | (112 & 113) WRS-6 | DUPAGE       | 734       | 428 |
|   | REVISED - |   |   |                          |                              | CONTRACT NO. 60R31        |                   |              |           |     |
|   | REVISED - |   |   |                          |                              | ILLINOIS FED. AID PROJECT |                   |              |           |     |