

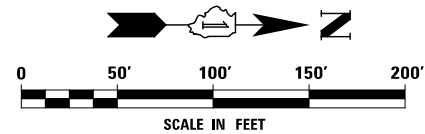
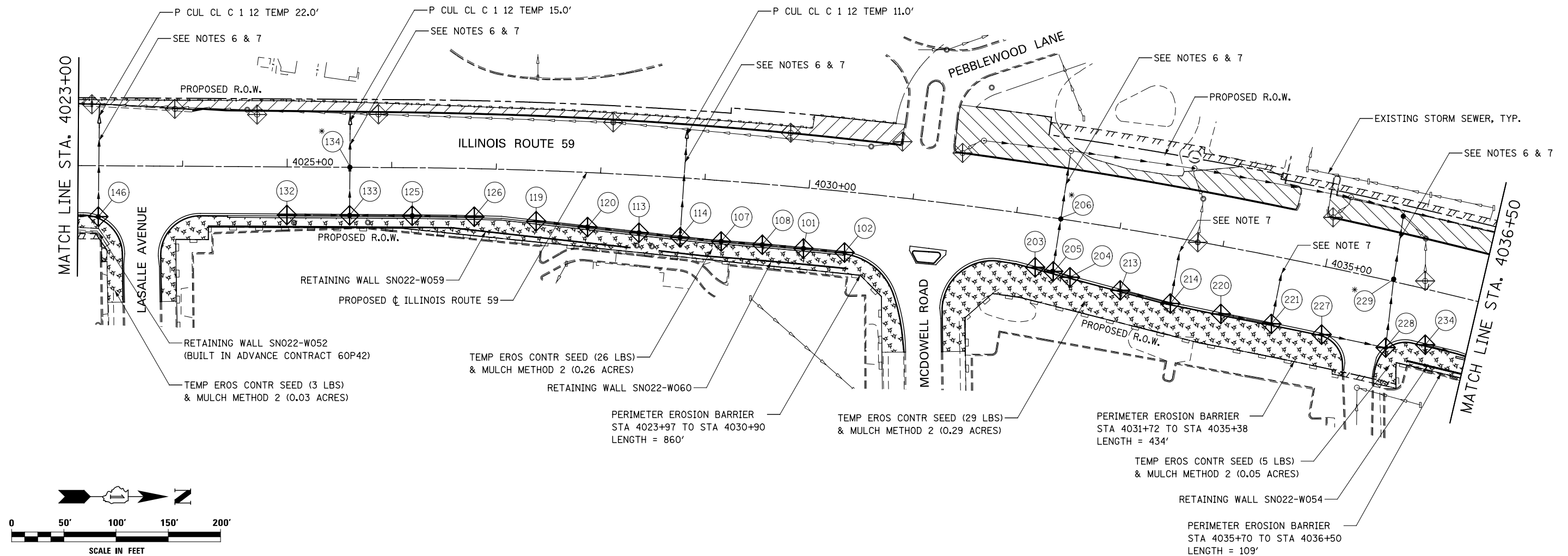
**EROSION CONTROL LEGEND**

|  |  |  |   |
|--|--|--|---|
|  | TEMPORARY EROSION CONTROL SEEDING AND MULCH METHOD 2                                 |  | TEMPORARY DITCH CHECK                               |
|  | TEMPORARY EROSION CONTROL SEEDING AND TEMPORARY EROSION CONTROL BLANKET              |  | TEMPORARY DITCH CHECK INSTALLED IN PREVIOUS STAGE   |
|  | PERMANENT SEEDING (SEE NOTE 3)   |  | INLET & PIPE PROTECTION                             |
|  | TEMPORARY EROSION CONTROL SEEDING OR PERMANENT SEEDING INSTALLED IN A PREVIOUS STAGE |  | INLET & PIPE PROTECTION INSTALLED IN PREVIOUS STAGE |
|  | TEMPORARY PAVEMENT   |  | FLOW DIRECTION (SEE NOTE 4)                         |
|  | PERIMETER EROSION BARRIER (SEE NOTE 2)   |  | PROPOSED STORM SEWER (SEE NOTE 1)                   |
|  | PERIMETER EROSION BARRIER INSTALLED IN PREVIOUS STAGE                                |  | PROPOSED STORM SEWER INSTALLED IN PREVIOUS STAGE    |
|  | INLET FILTER   |  | TEMPORARY PIPE CULVERT                              |
|  | INLET FILTER INSTALLED IN PREVIOUS STAGE   |  | PERMANENT DRAINAGE STRUCTURE NUMBER (SEE NOTE 1)    |

(\* ) - SEE NOTE 5

**NOTES**

1. SEE PROPOSED DRAINAGE PLANS FOR STORM SEWER INFORMATION.
2. PERIMETER EROSION BARRIER SHALL BE ERECTED ADJACENT TO R.O.W., EASEMENT, AND CONSTRUCTION LIMITS AND AS DIRECTED BY THE ENGINEER.
3. SEE LANDSCAPING PLANS FOR LANDSCAPING REQUIREMENTS.
4. SEE STAGE 1 CROSS SECTIONS FOR GRADING INFORMATION.
5. PROPOSED STRUCTURE SHALL BE BURIED AND TEMPORARILY COVERED/CLOSED WITH STEEL PLATE OF THICKNESS SPECIFIED AND APPROVED BY THE ENGINEER. PAYMENT FOR THIS TEMPORARY COVER INSTALLATION AND REMOVAL SHALL BE CONSIDERED INCLUDED IN THE COST OF THE PROPOSED STRUCTURE.
6. STORM SEWER TO BE FULLY CONSTRUCTED ACROSS ENTIRE ROADWAY, USING A SINGLE LANE NIGHT TIME CLOSURE.
7. WHEN TEMPORARY OR PERMANENT STORM SEWER IS TO BE PLACED BELOW EXISTING PAVEMENT OR TEMPORARY PAVEMENT, THE EXISTING PAVEMENT OR TEMPORARY PAVEMENT WITHIN THE LIMITS OF THE TRENCHING OPERATION, SHALL BE REMOVED AND REPLACED. PAID FORR AS CLASS D PATCHES, TYPE III, 15 INCH (SPECIAL).



|          |            |         |   |
|----------|------------|---------|---|
| DESIGNED | PJO        | REVISED | - |
| DRAWN    | KES        | REVISED | - |
| CHECKED  | JCM        | REVISED | - |
| DATE     | 12/14/2012 | REVISED | - |

**STATE OF ILLINOIS  
DEPARTMENT OF TRANSPORTATION**

**EROSION CONTROL - STAGE 1, 1A AND 1B  
ILLINOIS ROUTE 59**

SCALE: AS SHOWN | SHEET NO. 12 OF 40 SHEETS | STA. 4023+00 TO STA. 4036+50

| F.A.P. RTE.               | SECTION           | COUNTY | TOTAL SHEETS | SHEET NO. |
|---------------------------|-------------------|--------|--------------|-----------|
| 338                       | (112 & 113) WRS-6 | DUPAGE | 734          | 437       |
| CONTRACT NO. 60R31        |                   |        |              |           |
| ILLINOIS FED. AID PROJECT |                   |        |              |           |