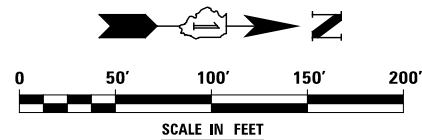
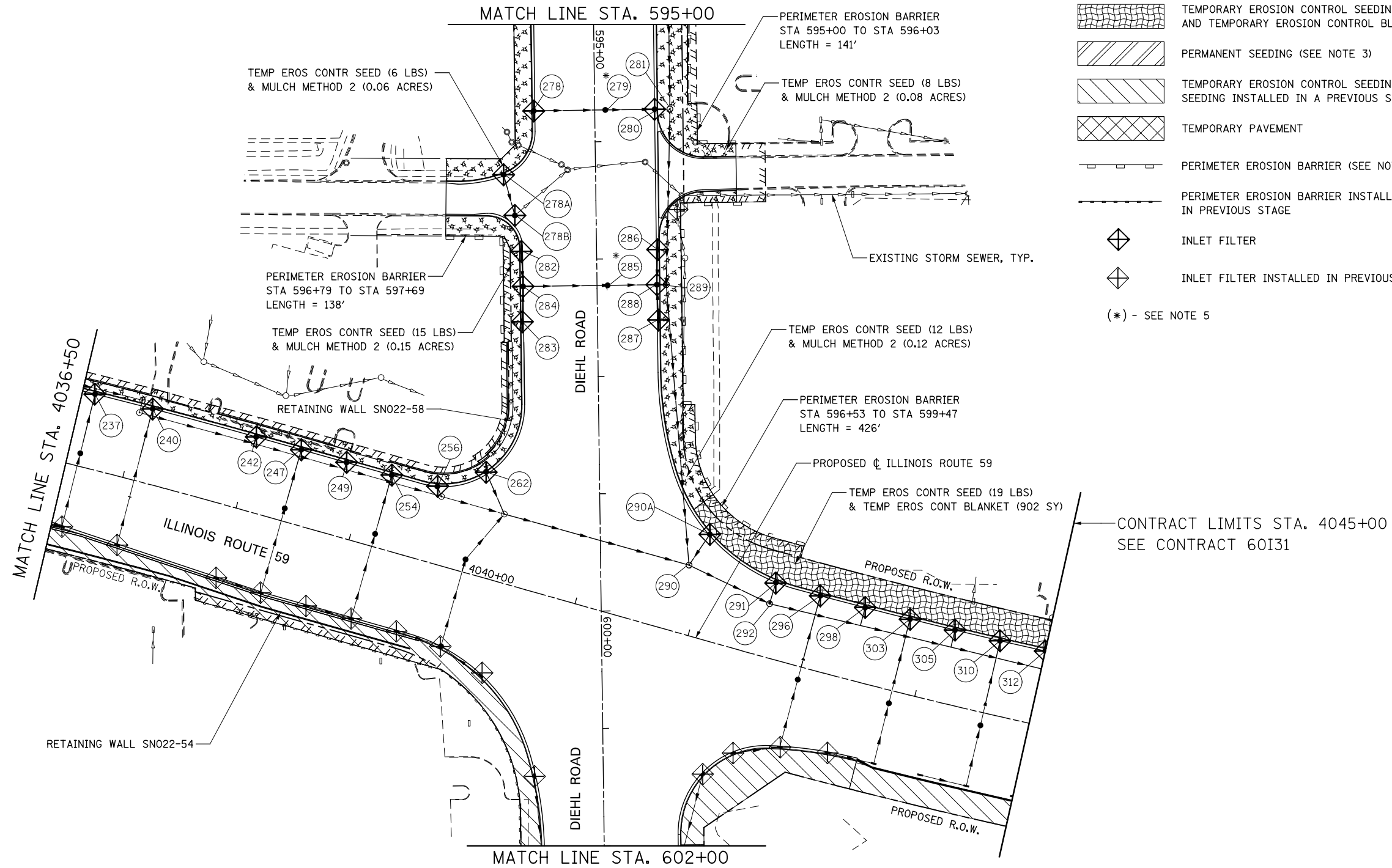


**EROSION CONTROL LEGEND**

	TEMPORARY EROSION CONTROL SEEDING AND MULCH METHOD 2		TEMPORARY DITCH CHECK
	TEMPORARY EROSION CONTROL SEEDING AND TEMPORARY EROSION CONTROL BLANKET		TEMPORARY DITCH CHECK INSTALLED IN PREVIOUS STAGE
	PERMANENT SEEDING (SEE NOTE 3)		INLET & PIPE PROTECTION
	TEMPORARY EROSION CONTROL SEEDING OR PERMANENT SEEDING INSTALLED IN A PREVIOUS STAGE		INLET & PIPE PROTECTION INSTALLED IN PREVIOUS STAGE
	TEMPORARY PAVEMENT		FLOW DIRECTION (SEE NOTE 4)
	PERIMETER EROSION BARRIER (SEE NOTE 2)		PROPOSED STORM SEWER (SEE NOTE 1)
	PERIMETER EROSION BARRIER INSTALLED IN PREVIOUS STAGE		PROPOSED STORM SEWER INSTALLED IN PREVIOUS STAGE
	INLET FILTER		TEMPORARY PIPE CULVERT
	INLET FILTER INSTALLED IN PREVIOUS STAGE		PERMANENT DRAINAGE STRUCTURE NUMBER (SEE NOTE 1)
(*) - SEE NOTE 5			



**NOTES**

1. SEE PROPOSED DRAINAGE PLANS FOR STORM SEWER INFORMATION.
2. PERIMETER EROSION BARRIER SHALL BE ERECTED ADJACENT TO R.O.W., EASEMENT, AND CONSTRUCTION LIMITS AND AS DIRECTED BY THE ENGINEER.
3. SEE LANDSCAPING PLANS FOR LANDSCAPING REQUIREMENTS.
4. SEE STAGE 3 CROSS SECTIONS FOR GRADING INFORMATION.
5. PROPOSED STRUCTURE SHALL BE BURIED AND TEMPORARILY COVERED/CLOSED WITH STEEL PLATE OF THICKNESS SPECIFIED AND APPROVED BY THE ENGINEER. PAYMENT FOR THIS TEMPORARY COVER INSTALLATION AND REMOVAL SHALL BE CONSIDERED INCLUDED IN THE COST OF THE PROPOSED STRUCTURE.

DESIGNED <i>PJO</i>	REVISED -	<b>STATE OF ILLINOIS DEPARTMENT OF TRANSPORTATION</b>	<b>EROSION CONTROL - STAGE 3, 3A, 3B, 3C AND 3D</b>			F.A.P. RTE.	SECTION	COUNTY	TOTAL SHEETS	SHEET NO.
DRAWN <i>KES</i>	REVISED -		<b>ILLINOIS ROUTE 59</b>			338	(112 & 113) WRS-6	DUPAGE	734	454
CHECKED <i>JCM</i>	REVISED -					CONTRACT NO. 60R31				
DATE <i>12/14/2012</i>	REVISED -					ILLINOIS FED. AID PROJECT				
		SCALE: AS SHOWN		SHEET NO. 29 OF 40 SHEETS		STA. 4036+50 TO STA. 4045+00				