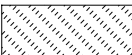
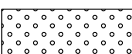
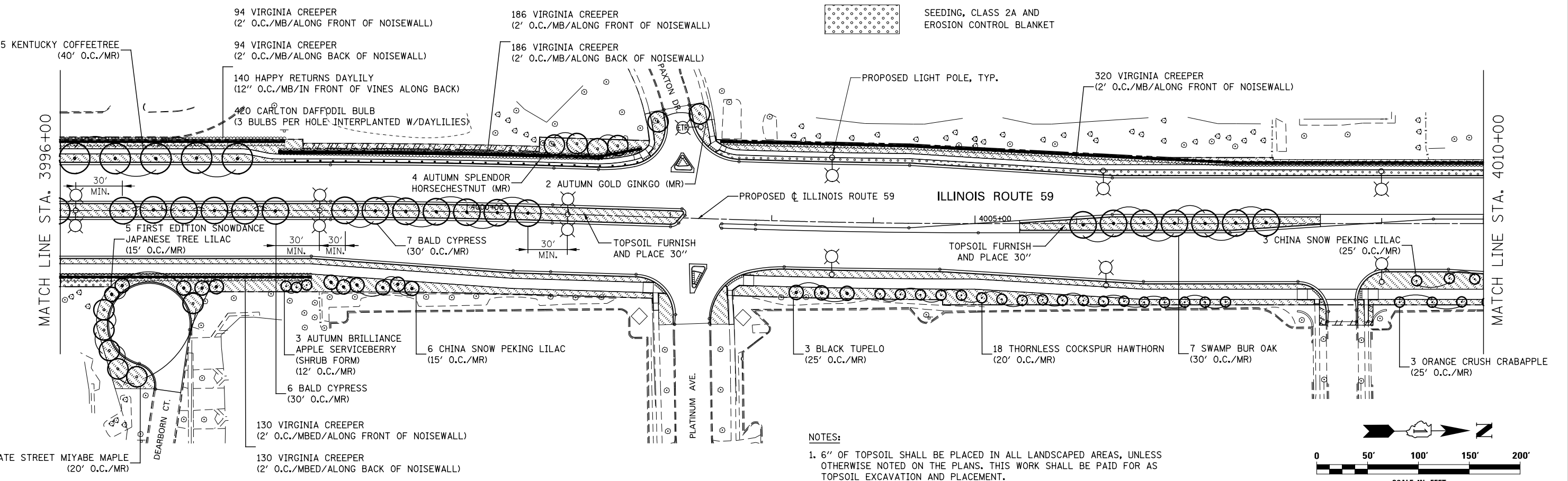


LEGEND

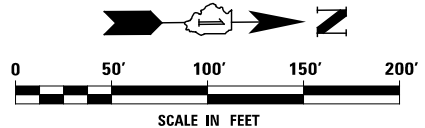
 SODDING, SALT TOLERANT

 SEEDING, CLASS 2A AND EROSION CONTROL BLANKET



NOTES:

1. 6" OF TOPSOIL SHALL BE PLACED IN ALL LANDSCAPED AREAS, UNLESS OTHERWISE NOTED ON THE PLANS. THIS WORK SHALL BE PAID FOR AS TOPSOIL EXCAVATION AND PLACEMENT.



DESIGNED	PJO	REVISED	-
DRAWN	KES	REVISED	-
CHECKED	JCM	REVISED	-
DATE	12/14/2012	REVISED	-

**STATE OF ILLINOIS
DEPARTMENT OF TRANSPORTATION**

LANDSCAPE PLANS - ILLINOIS ROUTE 59

SCALE: AS SHOWN SHEET NO. 1 OF 4 SHEETS STA. 3982+08 TO STA. 4010+00

F.A.P. RTE.	SECTION	COUNTY	TOTAL SHEETS	SHEET NO.
338	(112 & 113) WRS-6	DUPAGE	734	468
CONTRACT NO. 60R31				
ILLINOIS FED. AID PROJECT				