

ELEVATION

Notes:

Minimum lap for #5 bar is 3'-8".

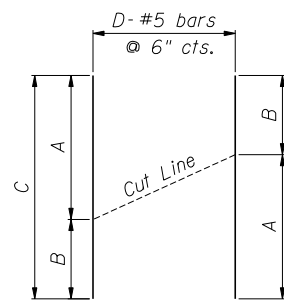
Space reinforcement in wall to miss shear studs.

* signifies cut bar. Order per length on Bill of Material. Cut as shown in Cutting Diagram and use half of bars in each face.

See Sheet SA-8 for Pilaster Details.

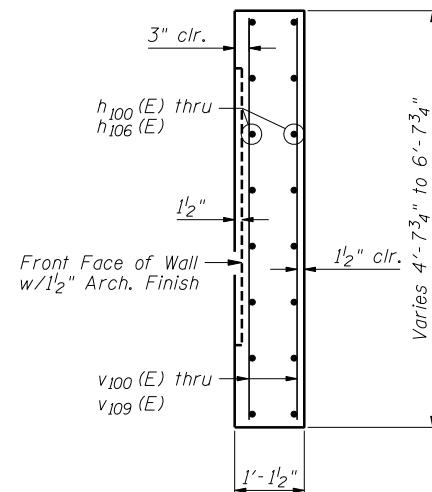
BILL OF MATERIAL

Bar	No.	Size	Length	Shape
h ₁₀₀ (E)	2	#5	6'-2"	┌
h ₁₀₁ (E)	30	#5	32'-8"	—
h ₁₀₂ (E)	16	#5	26'-5"	—
h ₁₀₃ (E)	14	#5	18'-5"	—
h ₁₀₄ (E)	42	#5	33'-8"	—
h ₁₀₅ (E)	14	#5	29'-8"	—
h ₁₀₆ (E)	14	#5	28'-8"	—
h ₁₀₇ (E)	12	#5	6'-8"	┐
h ₁₀₈ (E)	12	#5	8'-3"	┐
h ₁₀₉ (E)	54	#5	13'-4"	┐
h ₁₁₀ (E)	3	#5	14'-5"	┐
h ₁₁₁ (E)	3	#5	9'-6"	┐
v ₁₀₀ (E)	53	#5	9'-9"	—
v ₁₀₁ (E)	14	#5	6'-3"	—
v ₁₀₂ (E)	122	#5	6'-0"	—
v ₁₀₃ (E)	92	#5	5'-10"	—
v ₁₀₄ (E)	60	#5	5'-9"	—
v ₁₀₅ (E)	122	#5	5'-6"	—
v ₁₀₆ (E)	122	#5	5'-4"	—
v ₁₀₇ (E)	122	#5	5'-1"	—
v ₁₀₈ (E)	122	#5	4'-11"	—
v ₁₀₉ (E)	59	#5	10'-7"	—
v ₁₁₀ (E)	73	#5	4'-5"	┐
v ₁₁₁ (E)	73	#5	4'-9"	┐
v ₁₁₂ (E)	3	#5	6'-5"	┐
v ₁₁₃ (E)	3	#5	8'-9"	┐
Item		Unit	Quantity	
Concrete Structures		Cu. Yd.	63.5	
Reinforcement Bars, Epoxy Coated		Pound	11,440	
Pipe Underdrains for Structures, 4"		Foot	280	
Geocomposite Wall Drain		Sq. Yd.	55	

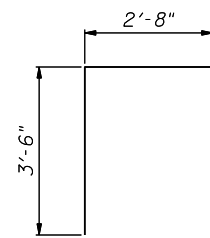


CUTTING DIAGRAM

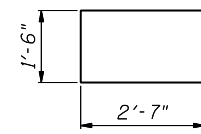
Bar	A	B	C	D
v ₁₀₀ (E)	4'-4"	5'-5"	9'-9"	53
v ₁₀₉ (E)	4'-11"	5'-8"	10'-7"	59



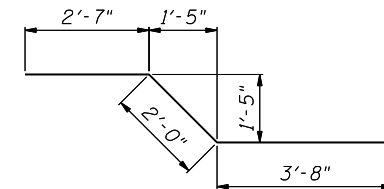
SECTION THRU CONCRETE FACING



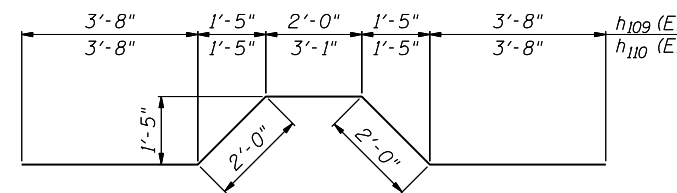
h₁₀₀(E) BAR



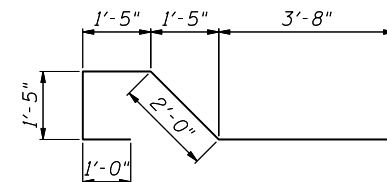
h₁₀₇(E) BAR



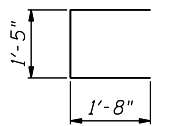
h₁₀₈(E) BAR



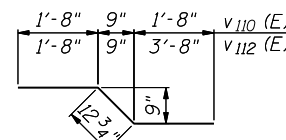
h₁₀₉(E) or h₁₁₀(E) BARS



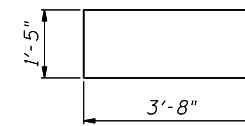
h₁₁₁(E) BAR



v₁₁₁(E) BAR



v₁₁₀(E) or v₁₁₂(E) BARS



v₁₁₃(E) BAR

FILE NAME = ...60R31-W048-007-ConcreteFacing2.dgn



Zroka Engineering, P.C.
4216 North Hermitage
Chicago, IL 60613

DESIGNED - LAS	REVISED -
CHECKED - DAZ	REVISED -
DRAWN - SAW	REVISED -
CHECKED - LAS	REVISED -

STATE OF ILLINOIS
DEPARTMENT OF TRANSPORTATION

CONCRETE FACING & DETAILS
STA. 3989+40.25 TO STA. 3991+85.47 SN 022-W048

SHEET NO. SA-7 OF SA-10 SHEETS

F.A.P. RTE.	SECTION	COUNTY	TOTAL SHEETS	SHEET NO.
338	(112 & 113) WRS-6	DUPAGE	734	495
CONTRACT NO. 60R31				

ILLINOIS FED. AID PROJECT