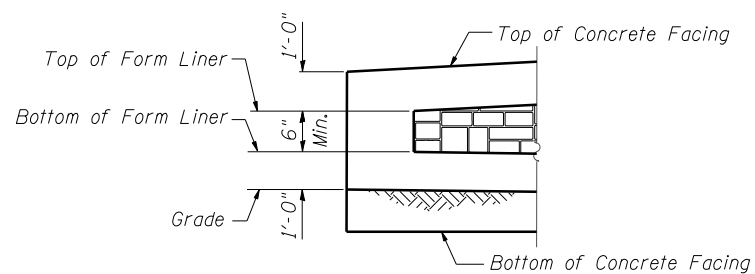
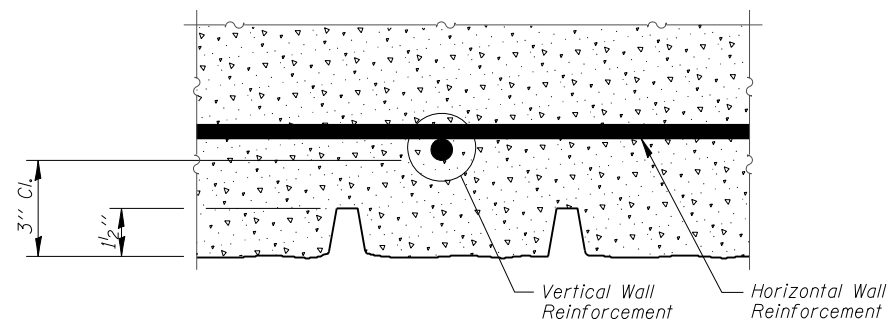


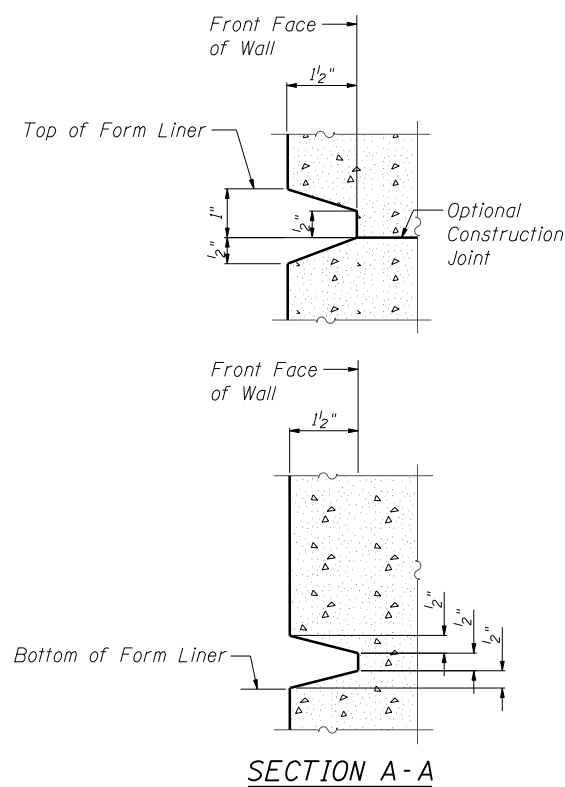
**ELEVATION - FORM LINER**



**END FORM LINER FINISH**



**PLAN - FORM LINER**



**FORM LINER ELEVATION TABLE**

Station	Form Liner Top Elevation	Form Liner Bottom Elevation
3989+40.25	None	None
3989+41.25	708.00	707.27
3989+66.25 (L)	708.00	707.35
3989+66.25 (R)	710.00	707.35
3989+69.25	710.00	707.48
3989+99.25	710.00	707.69
3990+22.00	710.00	707.85
3990+36.73	710.00	707.96
3990+66.67	710.00	708.17
3990+96.63	710.00	708.38
3991+26.57	710.00	708.60
3991+56.52	710.00	708.81
3991+84.47	710.00	709.02
3991+85.47	None	None

FILE NAME = ...60R31-W048-009-ArchFinish.dgn



Zroka Engineering, P.C.  
4216 North Hermitage  
Chicago, IL 60613

DESIGNED - LAS	REVISED -
CHECKED - DAZ	REVISED -
DRAWN - SAW	REVISED -
CHECKED - LAS	REVISED -
SCALE - NONE	
DATE - 12/14/2012	

**STATE OF ILLINOIS  
DEPARTMENT OF TRANSPORTATION**

**ARCHITECTURAL FINISH DETAILS  
STA. 3989 + 40.25 TO STA. 3991 + 85.47 SN 022-W048**

SHEET NO. SA-9 OF SA-10 SHEETS

F.A.P. RTE.	SECTION	COUNTY	TOTAL SHEETS	SHEET NO.
338	(112 & 113) WRS-6	DUPAGE	734	497
CONTRACT NO. 60R31				

ILLINOIS FED. AID PROJECT