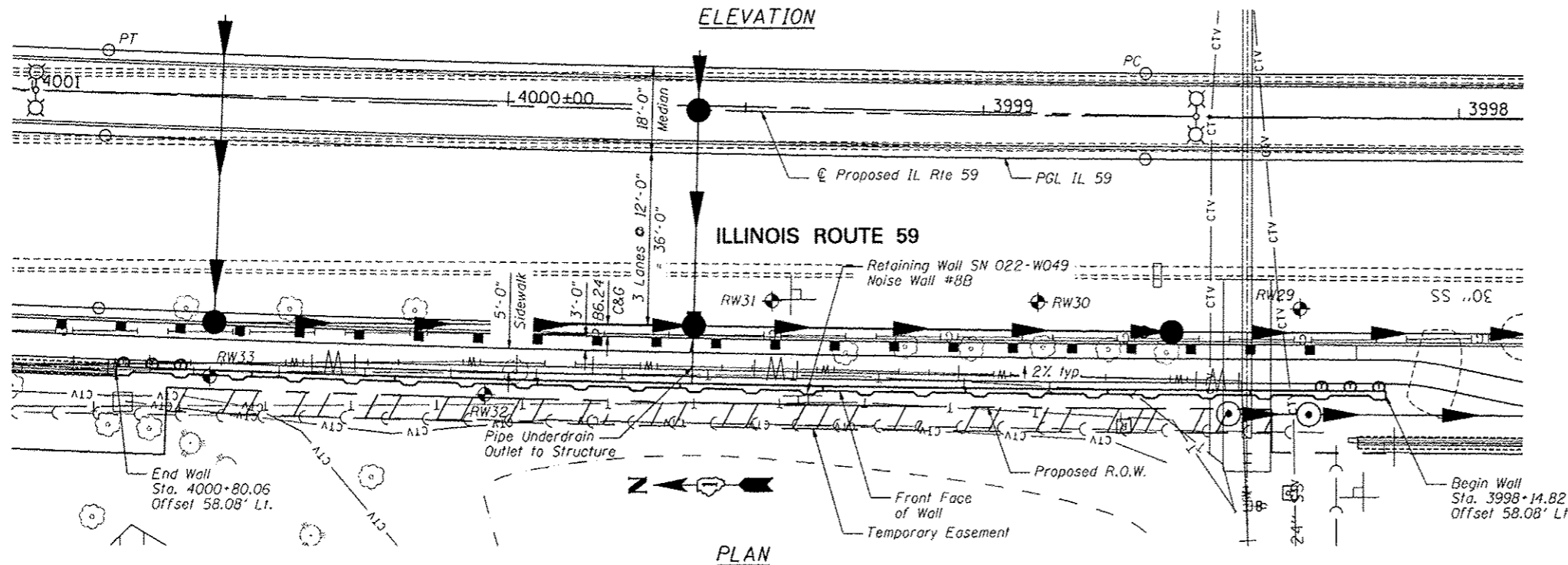
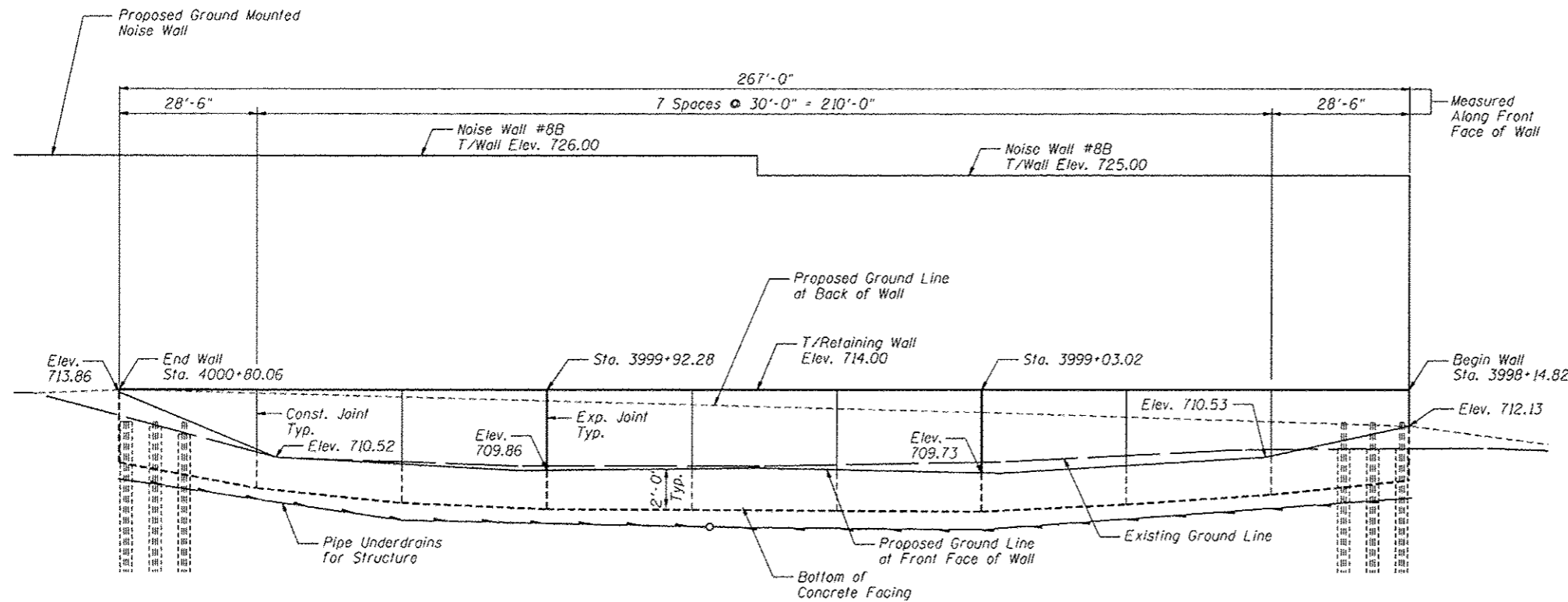


Bench Mark: Spike in west face of utility pole, east side IL Route 59, across from Courtyards Village entrance  
Sta. 3993+41. 49' Rt., Elev. 710.81

Existing Structure: None

**INDEX OF SHEETS**

- SB-1. General Plan & Elevation
- SB-2. General Notes & Bill of Material
- SB-3. Soldier Pile Layout
- SB-4. Typical Section
- SB-5. Details
- SB-6. Concrete Facing
- SB-7. Concrete Facing & Details
- SB-8. Pilaster & Details
- SB-9. Boring Logs 1
- SB-10. Boring Logs 2



Note:  
Offsets are measured from the  $\epsilon$  Proposed IL Rte. 59 to the front face of the wall.  
Wall to be built along straight chords between construction joints.  
Existing utilities to be relocated as necessary to construct wall.



*Deborah A. Zrka* 12/14/12  
Signature Date  
November 30, 2014  
Expires

**GENERAL PLAN & ELEVATION**  
**IL RTE 59 FAP RTE 338**  
**SECTION (112 & 113) WRS-6**  
**DUPAGE COUNTY**  
**STA. 3998+14.82 TO STA. 4000+80.06**  
**SN 022-W049**

<b>ZROKA</b> Zrka Engineering, P.C. 4216 North Hermitage Chicago, IL 60613	DESIGNED - JLA	REVISD -	<b>STATE OF ILLINOIS</b> <b>DEPARTMENT OF TRANSPORTATION</b>	<b>GENERAL PLAN &amp; ELEVATION</b> <b>STA. 3998+14.82 TO STA. 4000+80.06 SN 022-W049</b>		F.A.P. RTE. 338	SECTION 112 & 113 WRS-6	COUNTY DUPAGE	TOTAL SHEETS 734	SHEET NO. 499
	SCALE - NONE	CHECKED - LAS		REVISD -	SHEET NO. SB-1 OF SB-10 SHEETS				CONTRACT NO. 60R31	
	DATE - 12/14/2012	DRAWN - SAW		REVISD -					[ILLINOIS] FED. AID PROJECT	
		CHECKED - JLA		REVISD -						