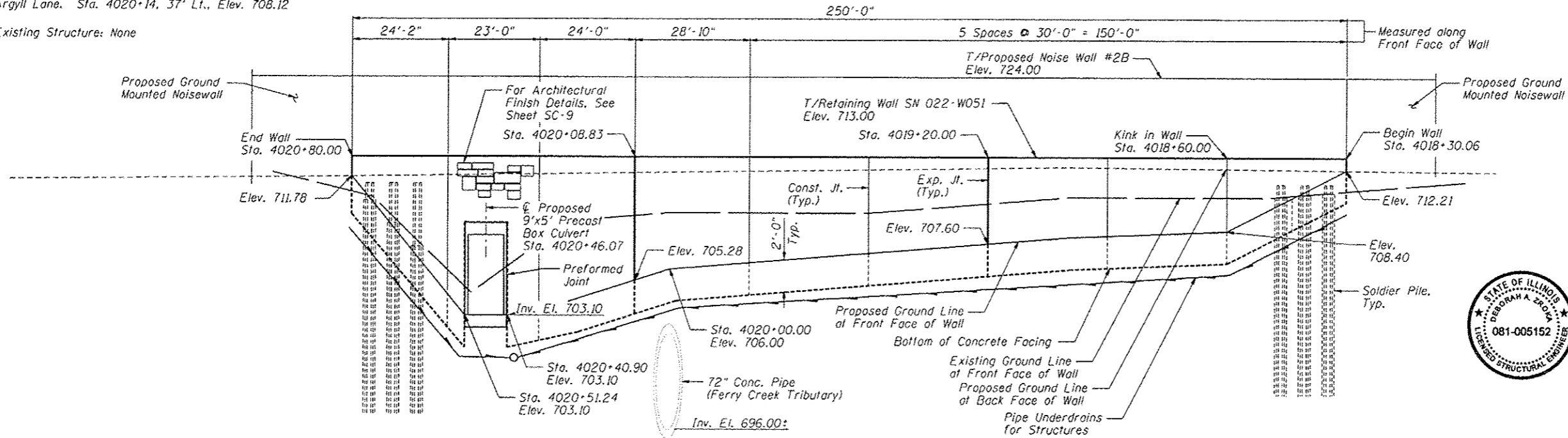
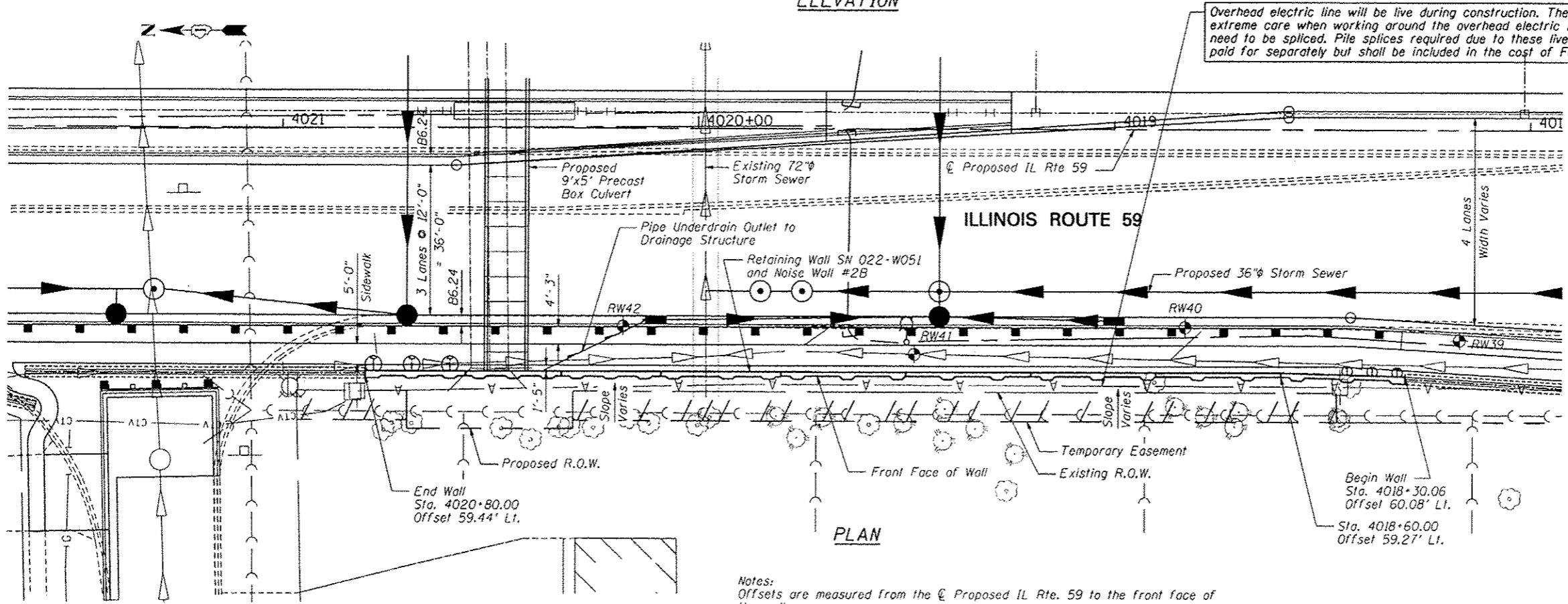


Bench Mark: Chiseled "□" on top of north end of headwall, west side of IL Rte. 59 about 75' south of centerline of Argyll Lane. Sta. 4020+14, 37' Lt., Elev. 708.12

Existing Structure: None



ELEVATION



PLAN

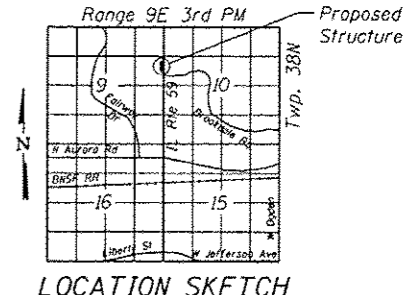
Notes:
 Offsets are measured from the ϕ Proposed IL Rte. 59 to the front face of the wall.
 Existing utilities except for the overhead electric line to be relocated as necessary to construct wall.
 For Index of Sheets, General Notes, Design Specifications, PGL Information, Name Plate and Total Bill of Material, see Sheet SC-2.

APPROVED
 For Structural Adequacy Only
[Signature]
 Engineer of Bridges & Structures



[Signature] 12-14-12
 Signature Date
 November 30, 2014
 Expires

Overhead electric line will be live during construction. The Contractor shall utilize extreme care when working around the overhead electric line. Piles in this area may need to be spliced. Pile splices required due to these live electric lines shall not be paid for separately but shall be included in the cost of Furnishing Soldier Piles.



LOCATION SKETCH

GENERAL PLAN & ELEVATION
 IL. RTE. 59
 F.A.P. RTE. 338
 SECTION (112 & 113) WRS-6
 DUPAGE COUNTY
 STA. 4018+30.06 TO STA. 4020+80.00
 SN 022-W051

ZROKA Engineering, P.C.
 4216 North Hermitage
 Chicago, IL 60613

DESIGNED - JLA	REVISD -
CHECKED - LAS	REVISD -
DRAWN - SAW	REVISD -
CHECKED - JLA	REVISD -

STATE OF ILLINOIS
 DEPARTMENT OF TRANSPORTATION

GENERAL PLAN & ELEVATION
 STA. 4018+30.06 TO STA. 4020+80.00 S.N. 022-W051

F.A.P. RTE.	SECTION	COUNTY	TOTAL SHEETS	SHEET NO.
338	(112 & 113) WRS-6	DUPAGE	734	509
				CONTRACT NO. 60R31

SHEET NO. SC-1 OF SC-12 SHEETS

ILLINOIS FED. AID PROJECT