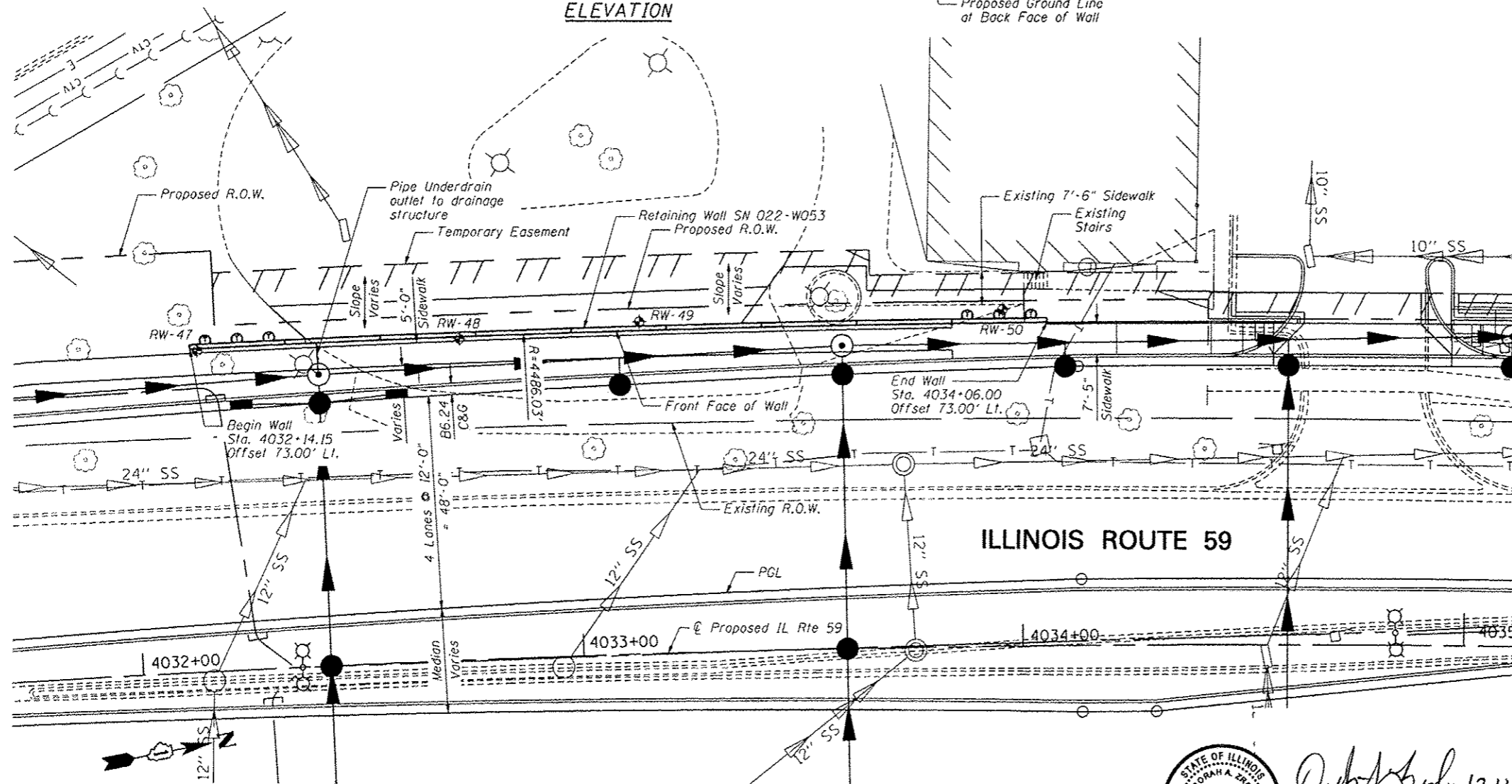
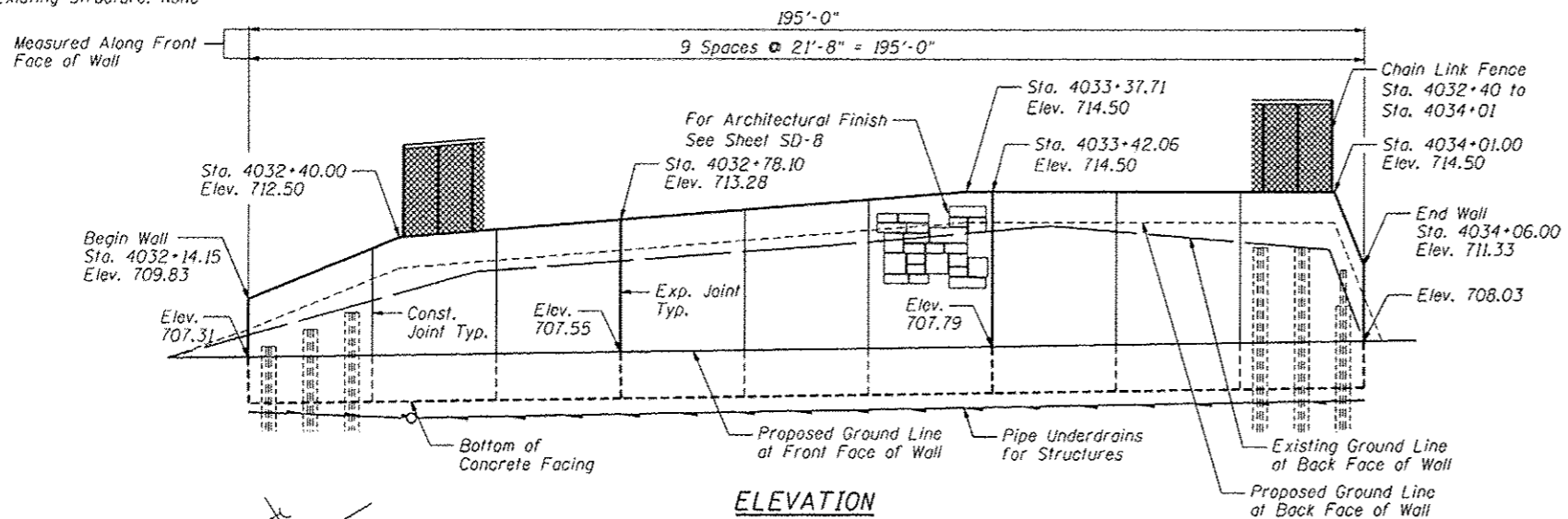


Bench Mark: Square "□" on top north end of headwall, west side of IL Rte 59, 75' south of centerline of Argyll Lane  
Sta. 4020+14.37' Lt., Elev. 708.12

Existing Structure: None



PLAN

Notes:  
Offsets are measured from the  $\hat{c}$  Proposed IL Rte. 59 to the front face of the wall.

Wall to be built along straight chords between construction joints.

**INDEX OF SHEETS**

- SD-1. General Plan and Elevation
- SD-2. Soldier Pile Layout
- SD-3. Typical Section
- SD-4. Details
- SD-5. Concrete Facing I
- SD-6. Concrete Facing and Details
- SD-7. Chain Link Fence
- SD-8. Architectural Finish Details
- SD-9. Soil Boring Logs 1
- SD-10. Soil Boring Logs 2

**DESIGN SPECIFICATIONS**  
2002 AASHTO Standard Specifications for Highway Bridges, 17th Edition

**DESIGN STRESSES**

**FIELD UNITS**

- $f_c = 3,500$  psi
- $f_y = 60,000$  psi (reinforcement)
- $f_y = 36,000$  psi (M270 Grade 36)

**GENERAL NOTES**

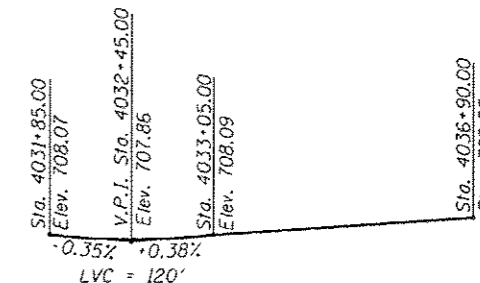
1. Reinforcement bars designated (E) shall be epoxy coated.
2. The Contractor is responsible for the design and performance of the lagging using no less than 3" nominal rough-sawn thickness and timber with a minimum allowable bending stress of 1000 psi.
3. Concrete Sealer shall be applied to exposed surfaces of the top and both faces of wall.

**TOTAL BILL OF MATERIAL**

ITEM	UNIT	TOTAL
Structure Excavation	Cu. Yd.	295
Concrete Structures	Cu. Yd.	63.6
Concrete Sealer	Sq. Ft.	1,989
Stud Shear Connectors	Each	167
Reinforcement Bars, Epoxy Coated	Pound	7,640
Geocomposite Wall Drain	Sq. Yd.	80
Untreated Timber Lagging	Sq. Ft.	988
Furnishing Soldier Piles (W Section)	Foot	675
Pipe Underdrains for Structures, 4"	Foot	215
Drilling and Setting Soldier Piles (In Soil)	Cu. Ft.	3,496
Form Liner Textured Surface	Sq. Ft.	747
Chain Link Fence 4', Attached to Structure	Foot	195

**HORIZONTAL CURVE DATA**

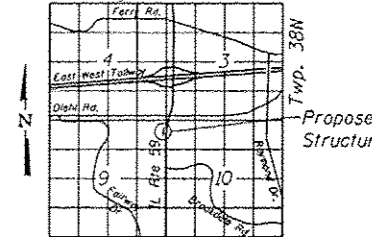
Proposed Curve PRIL59-7  
PI Sta. = 4032+07.95  
 $\Delta = 15^\circ 24' 28''$  (RT)  
 $D = 1^\circ 17' 54''$   
 $R = 4,413.03'$   
 $T = 596.97'$   
 $L = 1,186.73'$   
 $E = 40.19'$   
P.C. Sta. = 4026+10.99  
P.T. Sta. = 4037+97.72



**PROFILE GRADE**

(along inside edge of pavement proposed IL Route 59)

**LOCATION SKETCH**



**GENERAL PLAN AND ELEVATION**

IL RTE 59 FAP RTE 338  
SECTION (112 & 113) WRS-6  
DUPAGE COUNTY

STA. 4032+14.15 TO STA. 4034+06.00  
SN Q22-W053



*Deborah A. Zroka* 12-11-12  
Signature Date  
November 30, 2014  
Expires

FILE NAME: #FILE4

**ZROKA** Engineering  
Zroka Engineering, P.C.  
4216 North Hermitage  
Chicago, IL 60613

DESIGNED - LAS	REVISIONS
CHECKED - DAZ	REVISIONS
DRAWN - SAW	REVISIONS
CHECKED - LAS	REVISIONS

SCALE - NONE	DATE - 12/14/2012
--------------	-------------------

STATE OF ILLINOIS  
DEPARTMENT OF TRANSPORTATION

GENERAL PLAN AND ELEVATION  
STA. 4032+14.15 TO STA. 4034+06.00 SN Q22-W053

SHEET NO. 50-1 OF 50-10 SHEETS

F.A.P. RTE.	SECTION	COUNTY	TOTAL SHEETS	SHEET NO.
338	(112 & 113) WRS-6	DUPAGE	734	521

CONTRACT NO. 60R31  
ILLINOIS FED. AID PROJECT