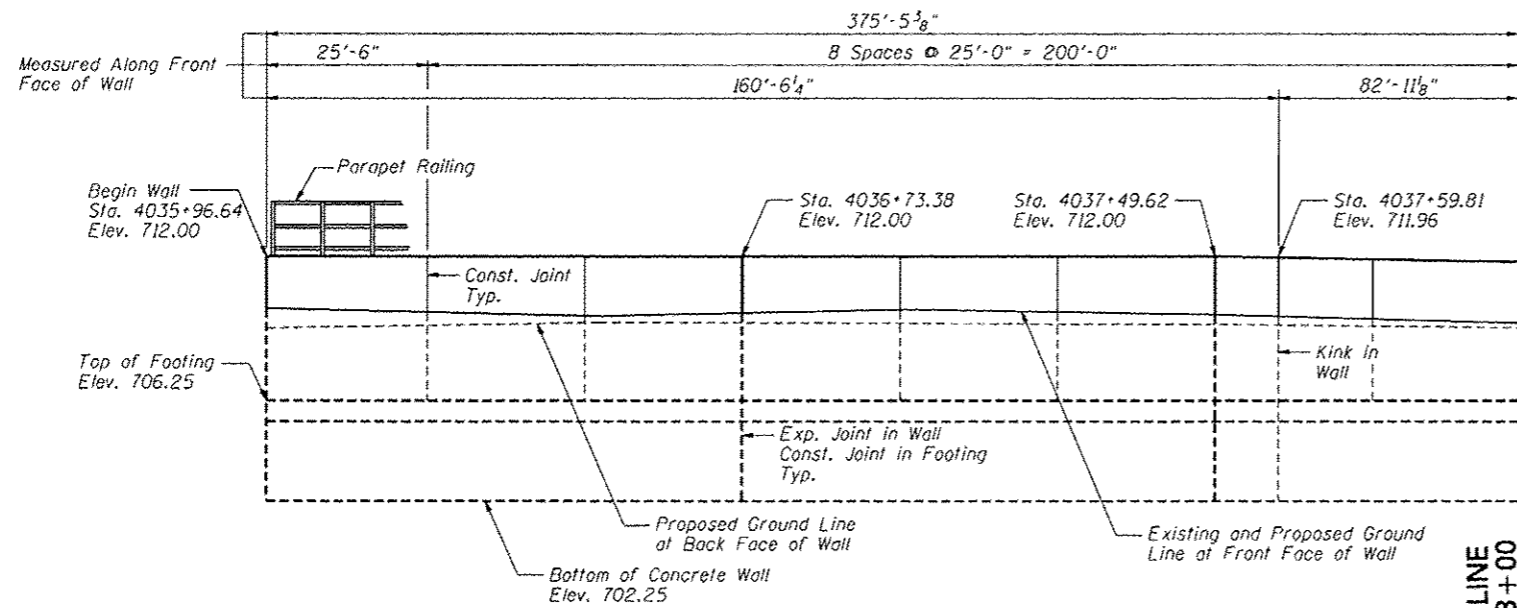


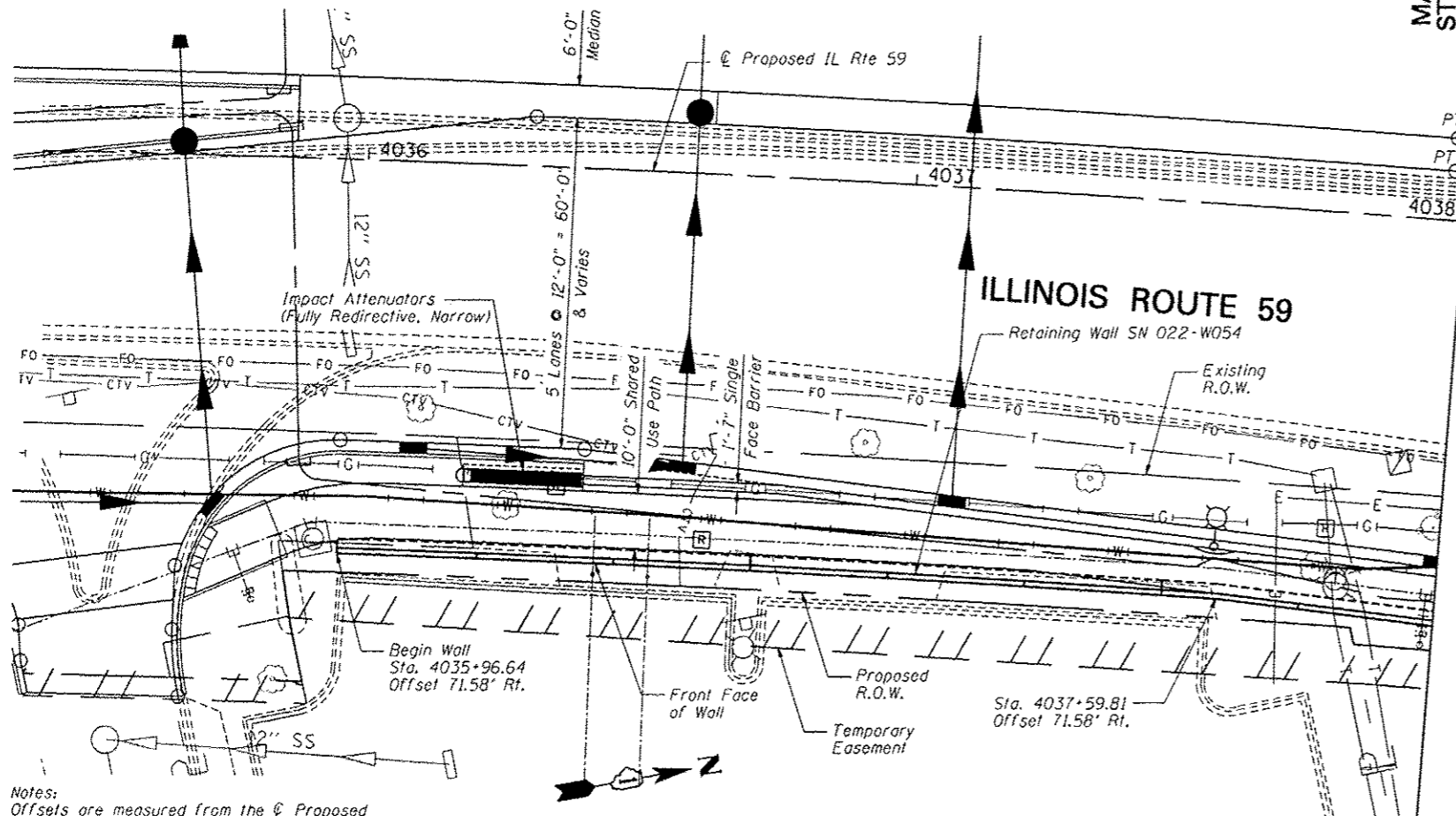
Bench Mark: Square "□" cut in west side of light pole base at Steak & Shake restaurant sign
Elev. 711.66

Existing Structure: None



ELEVATION

MATCH LINE
STA. 4038+00



PLAN

Notes:
Offsets are measured from the ϵ Proposed IL Rte. 59 to the front face of the wall.

Wall to be built along straight chords between construction joints.

INDEX OF SHEETS

- SE-1. General Plan & Elevation 1
- SE-2. General Plan & Elevation 2
- SE-3. Wall Plan and Elevation 1
- SE-4. Wall Plan and Elevation 2
- SE-5. Wall Plan and Elevation 3
- SE-6. Wall Section & Details
- SE-7. Parapet Railing
- SE-8. Soil Boring Logs

DESIGN SPECIFICATIONS

2002 AASHTO Standard Specifications for Highway Bridges, 17th Edition

DESIGN STRESSES

FIELD UNITS

$f'_c = 3,500$ psi
 $f_y = 60,000$ psi (reinforcement)

GENERAL NOTES

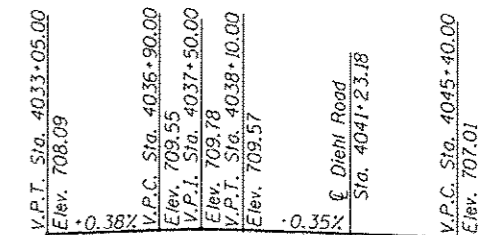
1. Reinforcement bars designated (E) shall be epoxy coated.
2. Concrete sealer shall be applied to exposed surfaces of the top and back faces of wall.

TOTAL BILL OF MATERIAL

ITEM	UNIT	TOTAL
Structure Excavation	Cu. Yd.	501
Concrete Structures	Cu. Yd.	151.7
Concrete Sealer	Sq. Ft.	1,408
Reinforcement Bars, Epoxy Coated	Pound	12,720
Parapet Railing	Foot	376
Geocomposite Wall Drain	Sq. Yd.	26
Pipe Underdrains for Structures, 4"	Foot	165
Granular Backfill for Structures	Cu. Yd.	54

HORIZONTAL CURVE DATA

Proposed Curve PRIL59-7
PI Sta. = 4032+07.95
 $\Delta = 15^\circ 24' 28"$ (RT)
 $D = 1^\circ 17' 54"$
 $R = 4,413.03'$
 $T = 596.97'$
 $L = 1,186.73'$
 $E = 40.19'$
P.C. Sta. = 4026+10.99
P.T. Sta. = 4037+97.72



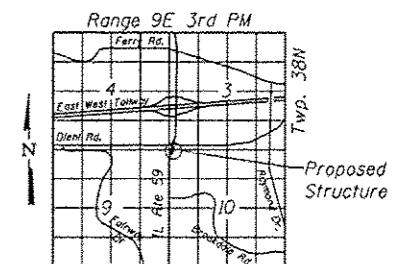
LVC = 120'

PROFILE GRADE

(along edge of pavement proposed IL Route 59)



Deborah A. Zroka
Signature
November 30, 2014
Date



LOCATION SKETCH

GENERAL PLAN & ELEVATION
IL RTE 59 FAP RTE 338
SECTION (112 & 113) WRS-6
DUPAGE COUNTY

STA. 4035+96.64 TO STA. 4039+75.26
SN 022-W054



DESIGNED - LAS	REVISIONS
CHECKED - DAZ	REVISIONS
DRAWN - SAW	REVISIONS
CHECKED - LAS	REVISIONS

SCALE - NONE	DATE - 12/14/2012
--------------	-------------------

STATE OF ILLINOIS
DEPARTMENT OF TRANSPORTATION

GENERAL PLAN & ELEVATION 1
STA. 4035 + 96.64 TO STA. 4039 + 75.26 SN 022-W054

SHEET NO. SE-1 OF SE-8 SHEETS

F.A.P. RTE.	SECTION	COUNTY	TOTAL SHEETS	SHEET NO.
338	(112 & 113) WRS-6	DUPAGE	734	531
				CONTRACT NO. 60R31

ILLINOIS FED. AID PROJECT