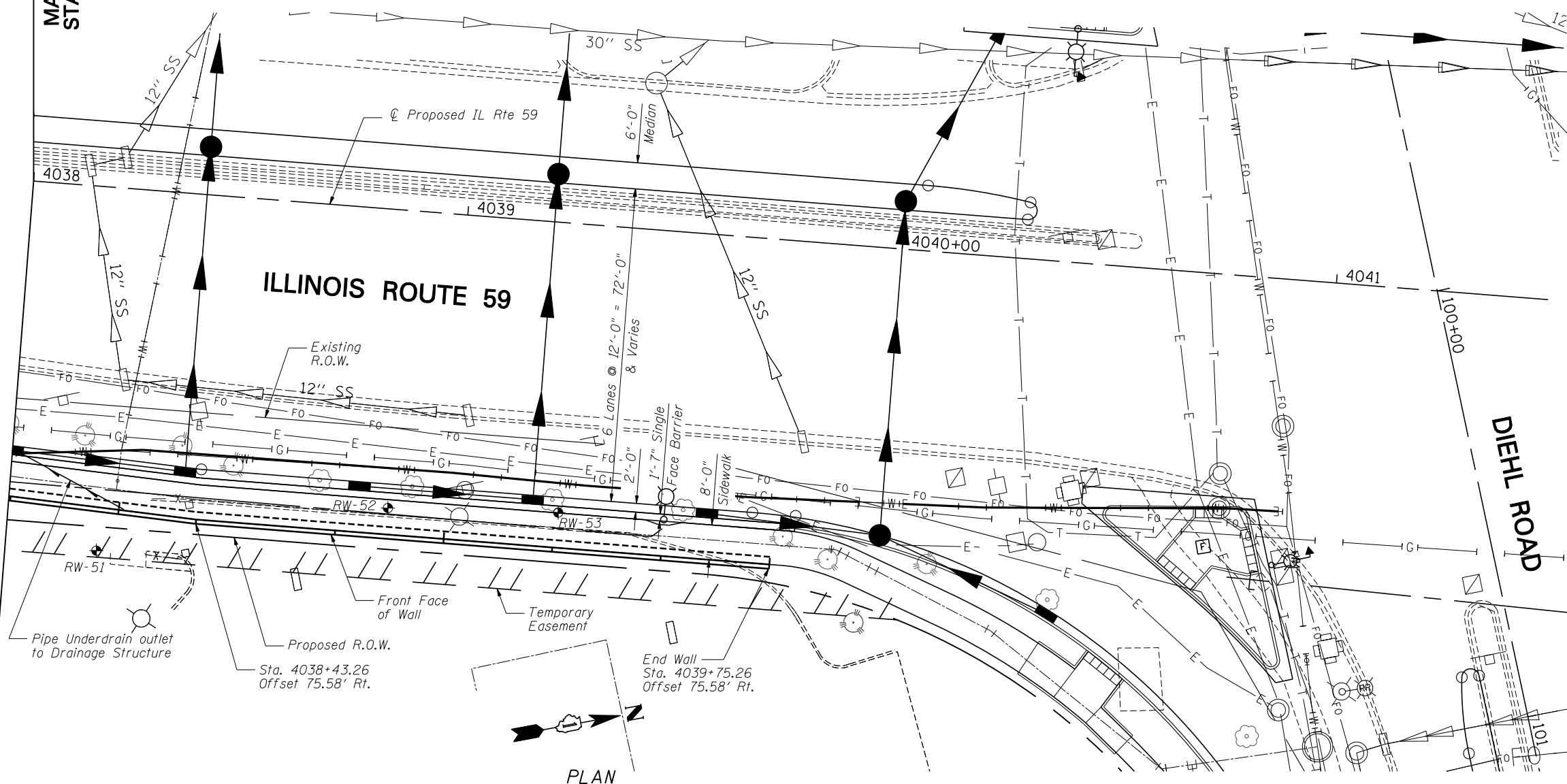


MATCH LINE
STA. 4038+00

ELEVATION

**8 Spaces @ 25'-0" = 200'-0"



PLAN

Note:
Offsets are measured from the ϕ Proposed IL Rte. 59 to the front face of the wall.

GENERAL PLAN & ELEVATION
IL RTE 59 FAP RTE 338
SECTION (112 & 113) WRS-6
DUPAGE COUNTY
STA. 4035+96.64 TO STA. 4039+75.26
SN 022-W054

FILE NAME = ...60R31-W054-002-GPE2.dgn



Zroka Engineering, P.C.
4216 North Hermitage
Chicago, IL 60613

DESIGNED - LAS	REVISED -
CHECKED - DAZ	REVISED -
DRAWN - SAW	REVISED -
CHECKED - LAS	REVISED -

STATE OF ILLINOIS
DEPARTMENT OF TRANSPORTATION

GENERAL PLAN & ELEVATION 2
STA. 4035+96.64 TO STA. 4039+75.26 SN 022-W054

SHEET NO. SE-2 OF SE-8 SHEETS

F.A.P. RTE.	SECTION	COUNTY	TOTAL SHEETS	SHEET NO.
338	(112 & 113) WRS-6	DUPAGE	734	532
CONTRACT NO. 60R31				

ILLINOIS FED. AID PROJECT