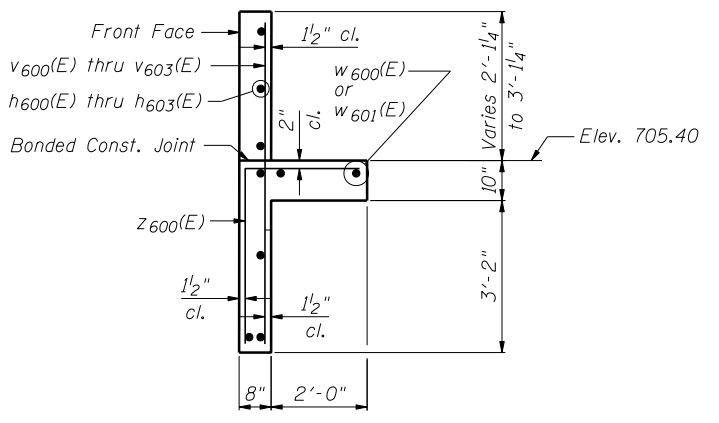


TYPICAL SECTION
Sta. 597+70.00 to Sta. 598+67.19

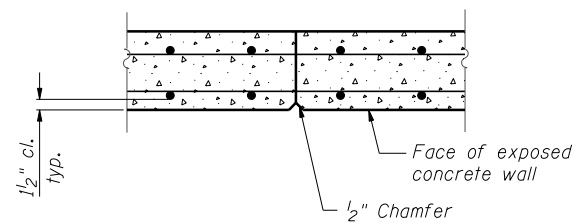


SECTION A-A
Maximum Soil Bearing Pressure = 1200 psf

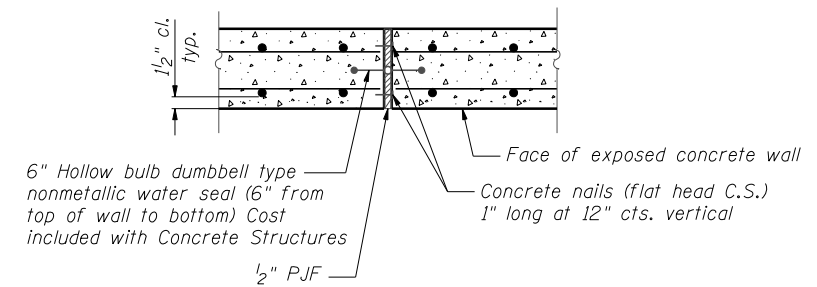
BILL OF MATERIAL

Bar	No.	Size	Length	Shape
* h ₆₀₀ (E)	16	#4	27'-8"	—
* h ₆₀₁ (E)	4	#4	24'-5"	—
h ₆₀₂ (E)	10	#4	29'-6"	—
h ₆₀₃ (E)	9	#4	26'-3"	—
v ₆₀₀ (E)	26	#4	6'-7"	—
v ₆₀₁ (E)	26	#4	6'-4"	—
v ₆₀₂ (E)	28	#4	6'-1"	—
v ₆₀₃ (E)	28	#4	5'-10"	—
* w ₆₀₀ (E)	6	#4	27'-8"	—
w ₆₀₁ (E)	6	#4	27'-10"	—
z ₆₀₀ (E)	108	#4	6'-1"	└
Item		Unit	Quantity	
Concrete Structures		Cu. Yd.	23.1	
Reinforcement Bars, Epoxy Coated		Pound	1,820	
Granular Backfill for Structures		Cu. Yd.	15	

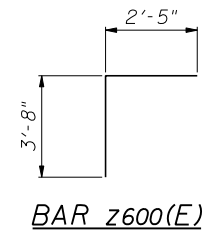
* Bars to be curved in the field as required to fit



CONSTRUCTION JOINT DETAIL



EXPANSION JOINT DETAIL



BAR z600(E)

FILE NAME = ...60R31-W058-003-Details.dgn

ZROKA engineering
Zroka Engineering, P.C.
4216 North Hermitage
Chicago, IL 60613

DESIGNED - LAS	REVISED -
CHECKED - DAZ	REVISED -
DRAWN - SAW	REVISED -
CHECKED - LAS	REVISED -

STATE OF ILLINOIS
DEPARTMENT OF TRANSPORTATION

WALL SECTION AND DETAILS
STA. 597+70.00 TO STA. 598+67.19 SN 022-W058

F.A.P. RTE.	SECTION	COUNTY	TOTAL SHEETS	SHEET NO.
338	(112 & 113) WRS-6	DUPAGE	734	541
CONTRACT NO. 60R31				

SHEET NO. SF-3 OF SF-4 SHEETS

ILLINOIS FED. AID PROJECT