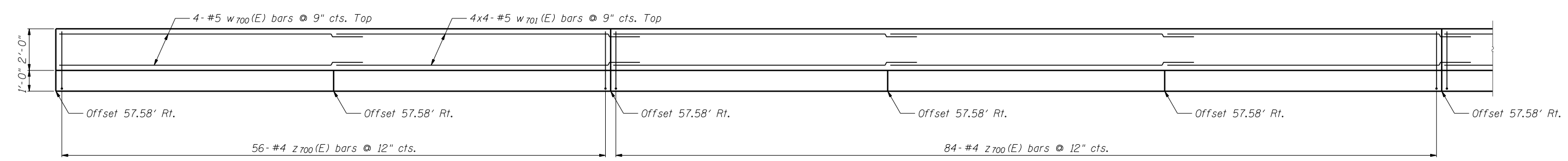
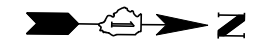


ELEVATION



PLAN



Notes:
 Minimum lap for #4 bar is 2'-11", #5 bar is 3'-8".
 Bars indicated thus: 1x5-#4 etc. indicates 1 line of bars with 5 lengths per line.
 See Sheet SG-7 for Section A-A, Details and Bill of Material.

FILE NAME = ...60R31-W059-003-WallPlanElev.dgn



DESIGNED - LAS	REVISED -
CHECKED - DAZ	REVISED -
DRAWN - SAW	REVISED -
DATE - 12/14/2012	CHECKED - LAS
	REVISED -

**STATE OF ILLINOIS
DEPARTMENT OF TRANSPORTATION**

**WALL PLAN AND ELEVATION 1
STA. 4024+24.83 TO STA. 4028+32.00 SN 022-W059**

F.A.P. RTE.	SECTION	COUNTY	TOTAL SHEETS	SHEET NO.
338	(112 & 113) WRS-6	DUPAGE	734	545
CONTRACT NO. 60R31				
ILLINOIS FED. AID PROJECT				

SHEET NO. SG-3 OF SG-9 SHEETS