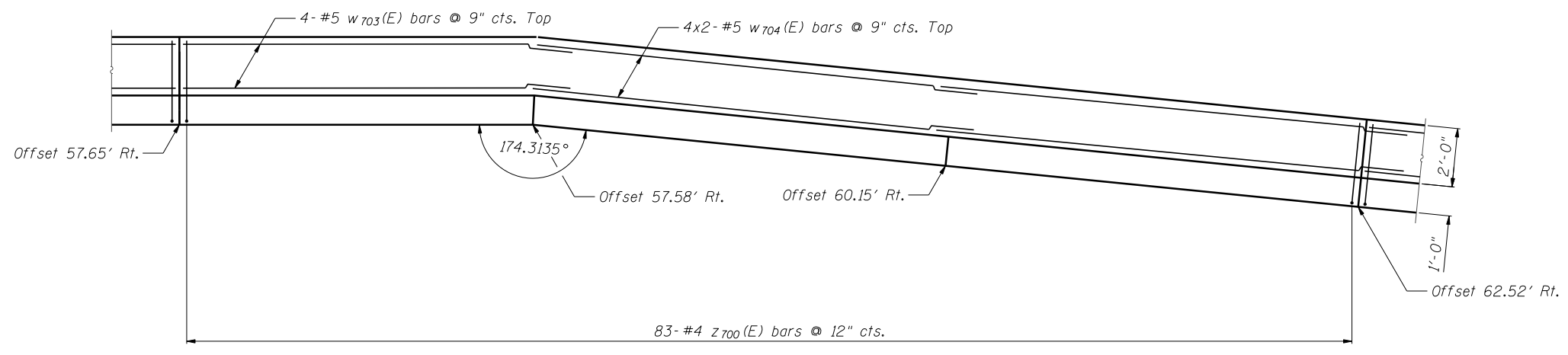


**ELEVATION**



**PLAN**



Notes:  
 Minimum lap for #4 bar is 2'-11", #5 bar is 3'-8".  
 Bars indicated thus: 5x2-#4 etc. indicates 5 lines of bars with 2 lengths per line.  
 See Sheet SG-7 for Section A-A, Details and Bill of Material.

FILE NAME = ...60R31-W059-005-WallPlanElev.dgn



Zroka Engineering, P.C.  
 4216 North Hermitage  
 Chicago, IL 60613

DESIGNED - LAS	REVISED -
CHECKED - DAZ	REVISED -
DRAWN - SAW	REVISED -
CHECKED - LAS	REVISED -

**STATE OF ILLINOIS  
 DEPARTMENT OF TRANSPORTATION**

**WALL PLAN AND ELEVATION 3  
 STA. 4024 + 24.83 TO STA. 4028 + 32.00 SN 022-W059**

F.A.P. RTE.	SECTION	COUNTY	TOTAL SHEETS	SHEET NO.
338	(112 & 113) WRS-6	DUPAGE	734	547
CONTRACT NO. 60R31				

SHEET NO. SG-5 OF SG-9 SHEETS

ILLINOIS FED. AID PROJECT