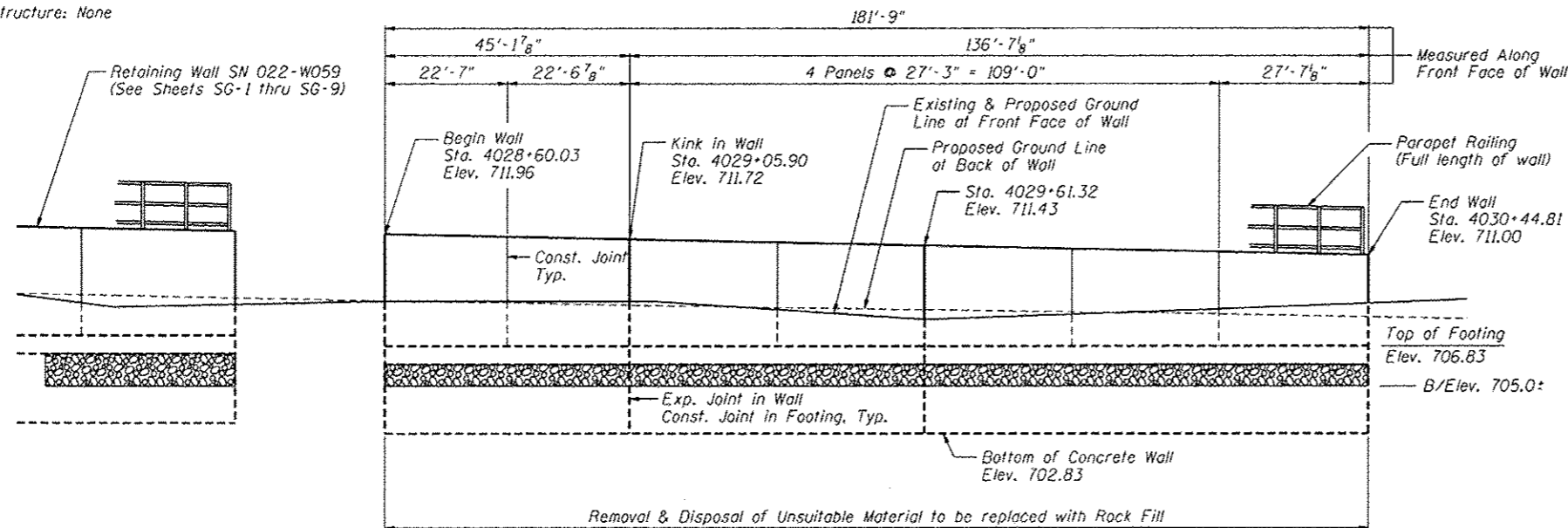


Bench Mark: Square "□" on top north end of headwall, west side of IL Rte 59, 75' south of centerline of Argyll Lane  
Sta. 4020+14, 37' Lt., Elev. 708.12

Existing Structure: None



Removal & Disposal of Unsuitable Material to be replaced with Rock Fill  
From Sta. 4028+60.03 to Sta. 4030+44.81 See Typical Section on Sheet SH-4

**ELEVATION**

**INDEX OF SHEETS**

- SH-1. General Plan and Elevation
- SH-2. Wall Plan and Elevation 1
- SH-3. Wall Plan and Elevation 2
- SH-4. Wall Section and Details
- SH-5. Parapet Railing
- SH-6. Boring Logs

**GENERAL NOTES**

1. Reinforcement bars designated (E) shall be epoxy coated.
2. Concrete sealer shall be applied to exposed surfaces of the front face, back face and top of wall.

**TOTAL BILL OF MATERIAL**

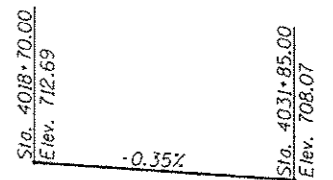
ITEM	UNIT	TOTAL
Structure Excavation	Cu. Yd.	227
Concrete Structures	Cu. Yd.	69.4
Concrete Sealer	Sq. Ft.	1,225
Reinforcement Bars, Epoxy Coated	Pound	6,110
Parapet Railing	Foot	182
Geocomposite Wall Drain	Sq. Yd.	43
Granular Backfill for Structures	Cu. Yd.	29
Removal & Disposal of Unsuitable Material	Cu. Yd.	14
Rock Fill	Cu. Yd.	14

**HORIZONTAL CURVE DATA**

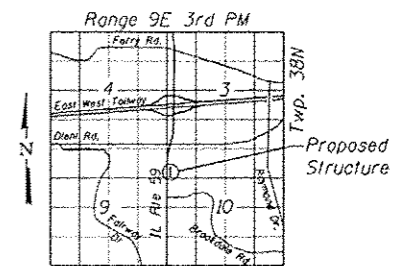
Proposed Curve PRIL59-7  
PI Sta. = 4032+07.95  
 $\Delta = 15^\circ 24' 28''$  (RT)  
 $D = 1^\circ 17' 54''$   
 $R = 4,413.03'$   
 $T = 596.97'$   
 $L = 1,186.73'$   
 $E = 40.19'$   
P.C. Sta. = 4026+10.99  
P.T. Sta. = 4037+97.72

**DESIGN SPECIFICATIONS**  
2002 AASHTO Standard Specifications  
for Highway Bridges, 17th Edition

**DESIGN STRESSES**  
**FIELD UNITS**  
 $f'_c = 3,500$  psi  
 $f_y = 60,000$  psi (reinforcement)

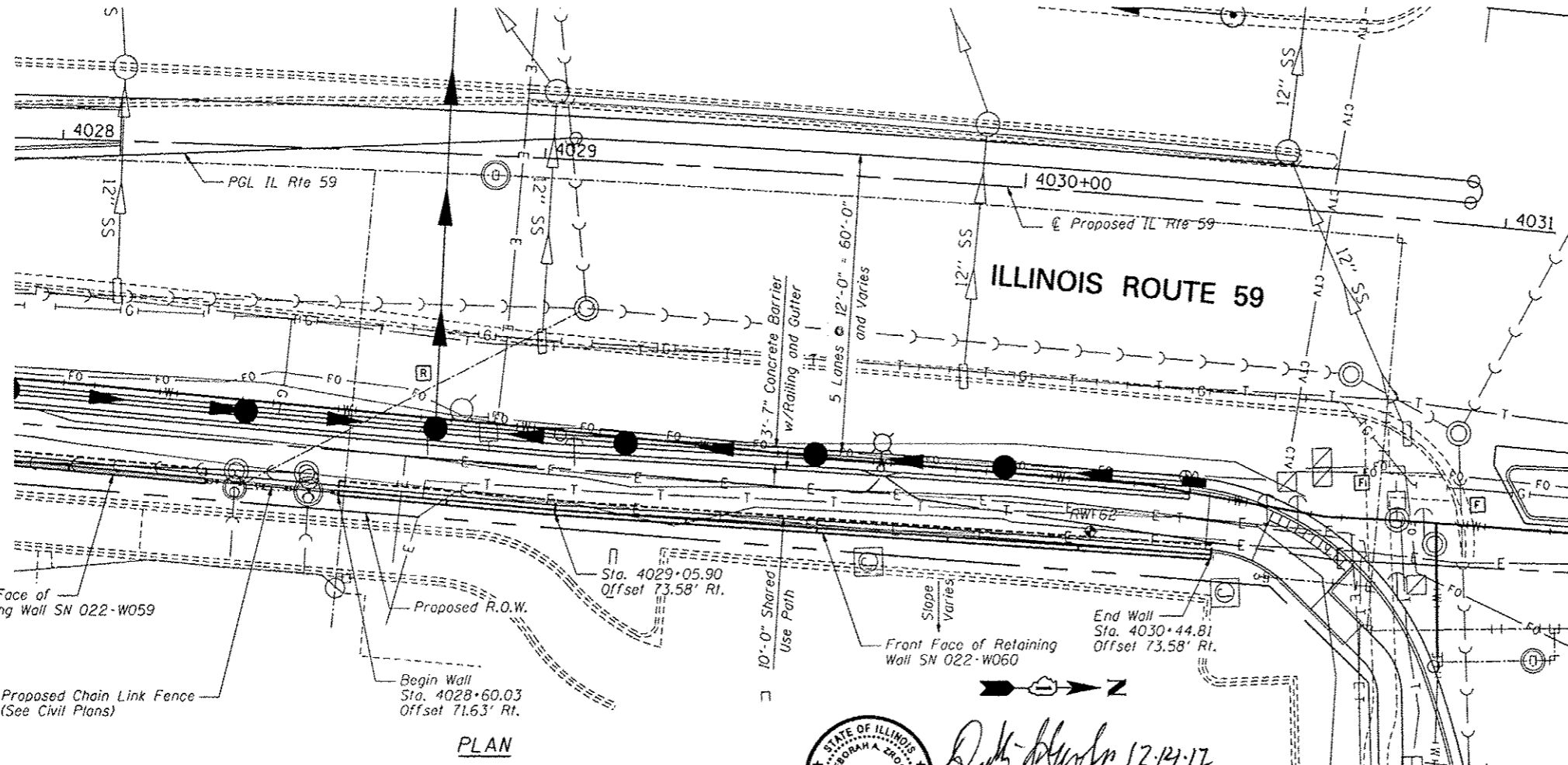


**PROFILE GRADE**  
(along edge of pavement  
proposed IL Route 59)



**LOCATION SKETCH**

**GENERAL PLAN AND ELEVATION**  
**IL RTE 59 FAP RTE 338**  
**SECTION (112 & 113) WRS-6**  
**DUPAGE COUNTY**  
**STA. 4028+60.03 TO STA. 4030+44.81**  
**SN 022-W060**



**PLAN**



*[Signature]*  
November 30, 2014  
Date

Note:  
Offsets are measured from the  $\text{CL}$  Proposed IL Rte. 59 to the front face of the wall.

**ZROKA** Engineering, P.C.  
4216 North Hazelrigg  
Chicago, IL 60613

DESIGNED - LAS	REVISED -
CHECKED - DAZ	REVISED -
DRAWN - SAW	REVISED -
CHECKED - LAS	REVISED -

**STATE OF ILLINOIS**  
**DEPARTMENT OF TRANSPORTATION**

**GENERAL PLAN AND ELEVATION**  
**STA. 4028 + 60.03 TO STA. 4030 + 44.81 SN 022-W060**

F.A.P. RTE.	SECTION	COUNTY	TOTAL SHEETS	SHEET NO.
338	(112 & 113) WRS-6	DUPAGE	734	552

CONTRACT NO. 60R31

SHEET NO. SH-1 OF SH-6 SHEETS

ILLINOIS FED. AID PROJECT