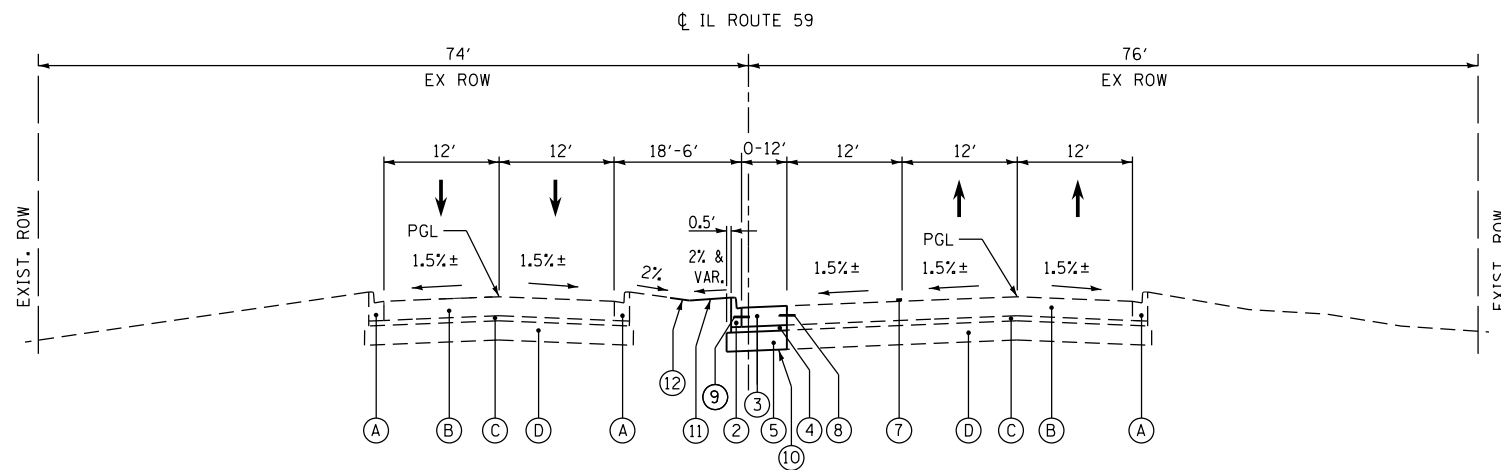


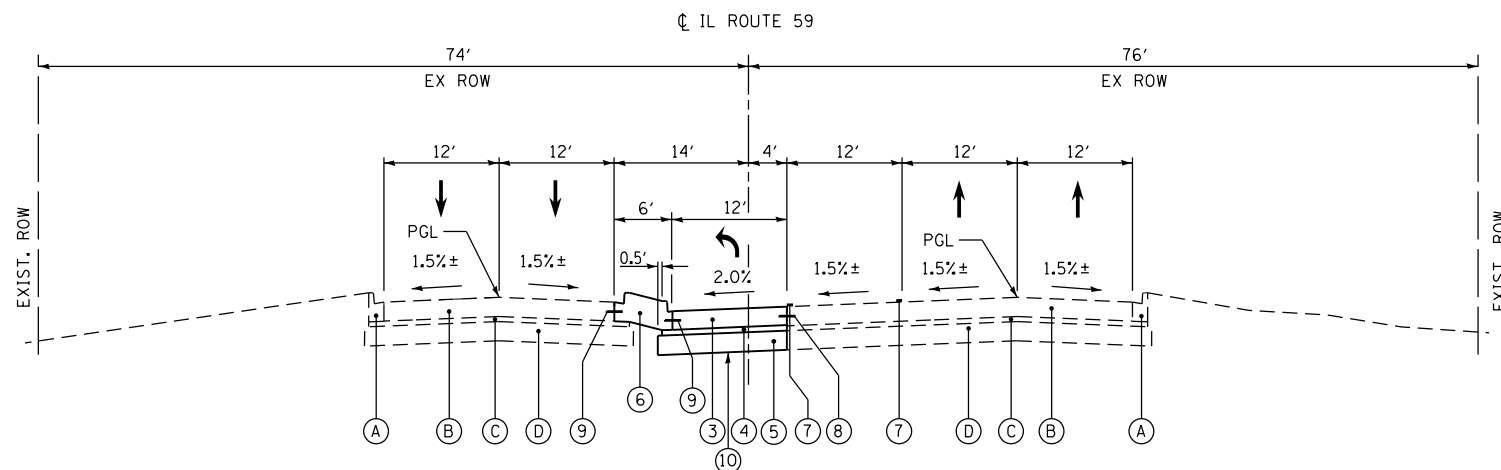
**EXISTING TYPICAL SECTION - IL ROUTE 59**

STA. 494 + 25.00 TO STA. 499 + 64.48



**PROPOSED TYPICAL SECTION - IL ROUTE 59 NB TAPER**

STA. 494 + 25 TO STA. 497 + 26



**PROPOSED TYPICAL SECTION - IL ROUTE 59 NB LEFT TURN LANE**

STA. 497 + 26 TO STA. 499 + 43

**EXISTING LEGEND**

- (A) EXISTING B-6.24 CURB & GUTTER
- (B) EXISTING PORTLAND CEMENT CONCRETE PAVEMENT 10 1/4" (JOINTED)
- (C) EXISTING STABILIZED SUBBASE - HOT-MIX ASPHALT 4 1/2"
- (D) EXISTING AGGREGATE SUBGRADE IMPROVEMENT, 12"

**PROPOSED LEGEND**

- (1) PROPOSED COMBINATION CONCRETE CURB AND GUTTER, TYPE B-6.24
- (2) PROPOSED COMBINATION CONCRETE CURB AND GUTTER, TYPE B-6.12
- (3) PROPOSED PORTLAND CEMENT CONCRETE PAVEMENT 10" (JOINTED)
- (4) PROPOSED STABILIZED SUBBASE - HOT MIX ASPHALT, 4 1/2"
- (5) PROPOSED AGGREGATE SUBGRADE IMPROVEMENT, 12"
- (6) PROPOSED CONCRETE MEDIAN, TYPE SB-6.24 (MODIFIED) (MONOLITHIC POURED MEDIAN - SEE DETAIL ON SHEET 8)
- (7) PROPOSED POLYUREA PAVEMENT MARKING TYPE 1
- (8) NO. 8 TIE BAR, EPOXY COATED, DEFORMED, 24" LONG SPACED AT 24" CTR (DRILL AND GROUT). INCLUDED IN THE COST OF THE PROPOSED PCC PAVEMENT 10" (JOINTED)
- (9) NO. 6 TIE BAR, EPOXY COATED, DEFORMED, 24" LONG SPACED AT 24" CTS (DRILL AND GROUT). INCLUDED IN THE COST OF THE PROPOSED COMBINATION CONCRETE CURB AND GUTTER.
- (10) PROPOSED GEOTECHNICAL FABRIC FOR GROUND STABILIZATION
- (11) PROPOSED TOPSOIL EXCAVATION AND PLACEMENT, 4"
- (12) PROPOSED SEEDING, CLASS 2A

**HOT-MIX ASPHALT MIXTURE REQUIREMENTS**

MIXTURE TYPE	AIR VOIDS Ndes
STABILIZED SUBBASE	
STABILIZED SUBBASE - HOT MIX ASPHALT, IL-19 mm, 4 1/2"	3% @ 50 GYR.

1. THE UNIT WEIGHT USED TO CALCULATE ALL HOT-MIX ASPHALT MIXTURE QUANTITIES IS 112 LBS/SO YD/IN
2. THE "AC TYPE" FOR POLYMERIZED HMA MIXES SHALL BE "SBS/SBR PG 76-22" AND FOR NON-POLYMERIZED HMA THE "AC TYPE" SHALL BE "PG 64-22" UNLESS MODIFIED BY DISTRICT ONE SPECIAL PROVISIONS. FOR USE OF RECYCLED MATERIALS SEE DISTRICT ONE SPECIAL PROVISIONS.

FILE NAME = \$FILEL\$

USER NAME = mmiller	DESIGNED - BFH	REVISED -
	DRAWN - BFH	REVISED -
PLOT SCALE = 100.0000' / 1"	CHECKED - BA	REVISED -
PLOT DATE = 3/21/2013	DATE -	REVISED -

**STATE OF ILLINOIS  
DEPARTMENT OF TRANSPORTATION**

**EXISTING & PROPOSED TYPICAL SECTIONS**

SCALE: N.T.S. SHEET 1 OF 2 SHEETS STA. TO STA.

F.A. RTE.	SECTION	COUNTY	TOTAL SHEETS	SHEET NO.
338	(113R-2) N	WILL	38	7
			CONTRACT NO. 60T95	
ILLINOIS FED. AID PROJECT				