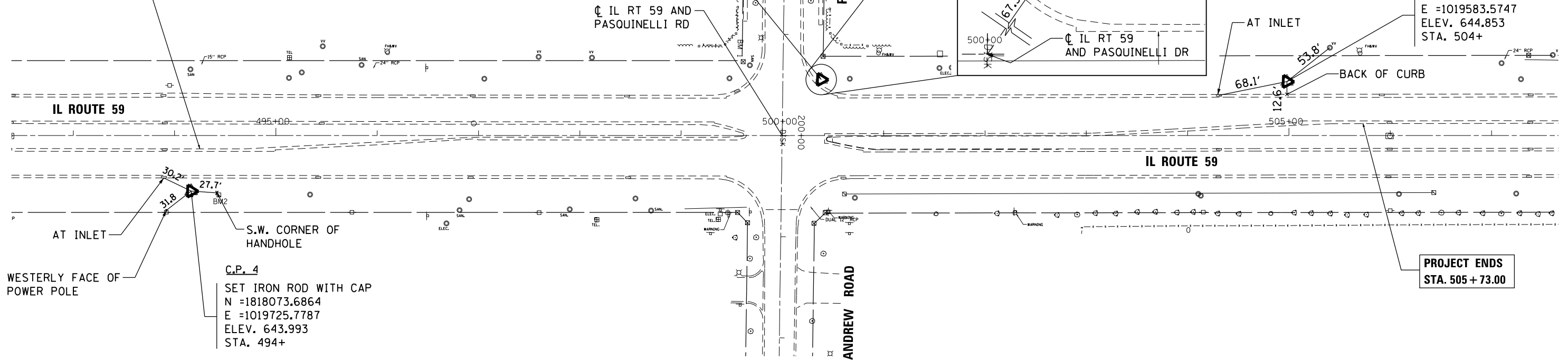


PROJECT BEGINS  
STA. 494 + 25.00

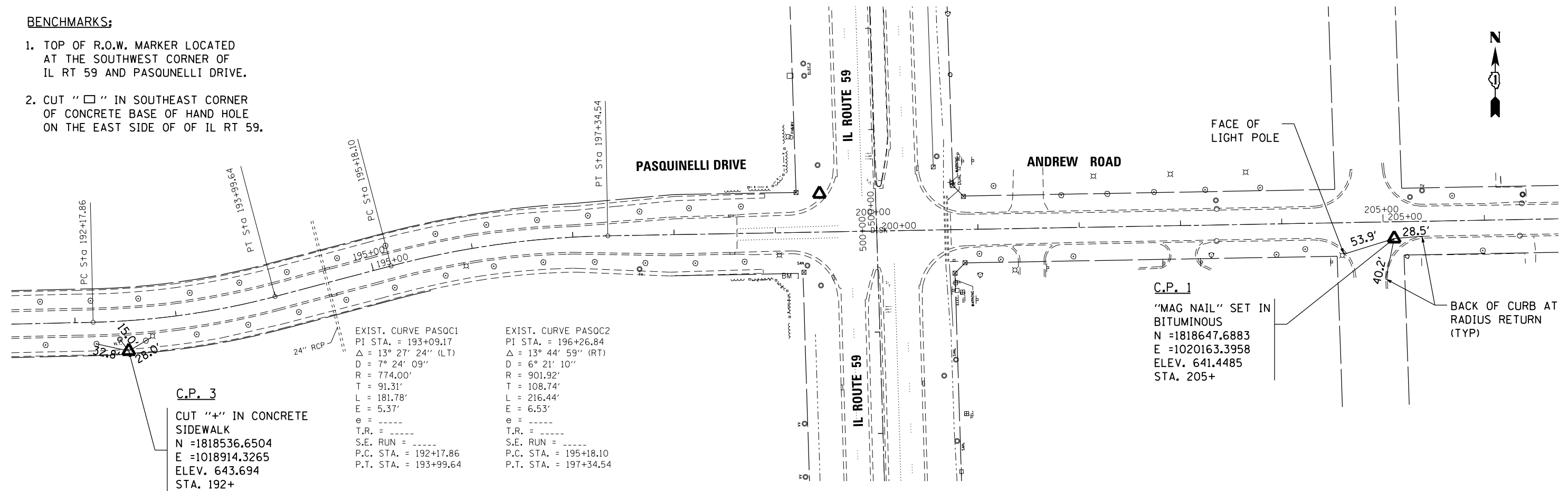
C.P. 2  
SET IRON ROD WITH CAP  
N = 1817502.3831  
E = 1020937.6820  
ELEV. 645.406  
STA. 500+

C.P. 5  
SET IRON ROD WITH CAP  
N = 1819151.4159  
E = 1019583.5747  
ELEV. 644.853  
STA. 504+



**BENCHMARKS:**

1. TOP OF R.O.W. MARKER LOCATED AT THE SOUTHWEST CORNER OF IL RT 59 AND PASQUINELLI DRIVE.
2. CUT "□" IN SOUTHEAST CORNER OF CONCRETE BASE OF HAND HOLE ON THE EAST SIDE OF OF IL RT 59.



FILE NAME = #FILE#

USER NAME = mm11er	DESIGNED - BFH	REVISED -
PLOT SCALE = 100.0000' / 1"	DRAWN - BFH	REVISED -
PLOT DATE = 3/21/2013	CHECKED - BA	REVISED -
	DATE - 3/19/13	REVISED -

**STATE OF ILLINOIS  
DEPARTMENT OF TRANSPORTATION**

**ALIGNMENT, TIES AND BENCHMARKS**

SCALE: 1"=50' SHEET 1 OF 1 SHEETS STA. TO STA.

F.A.P. RTE.	SECTION	COUNTY	TOTAL SHEETS	SHEET NO.
338	(113R-2N)	WILL	38	10
CONTRACT NO. 60T95				
ILLINOIS FED. AID PROJECT				