

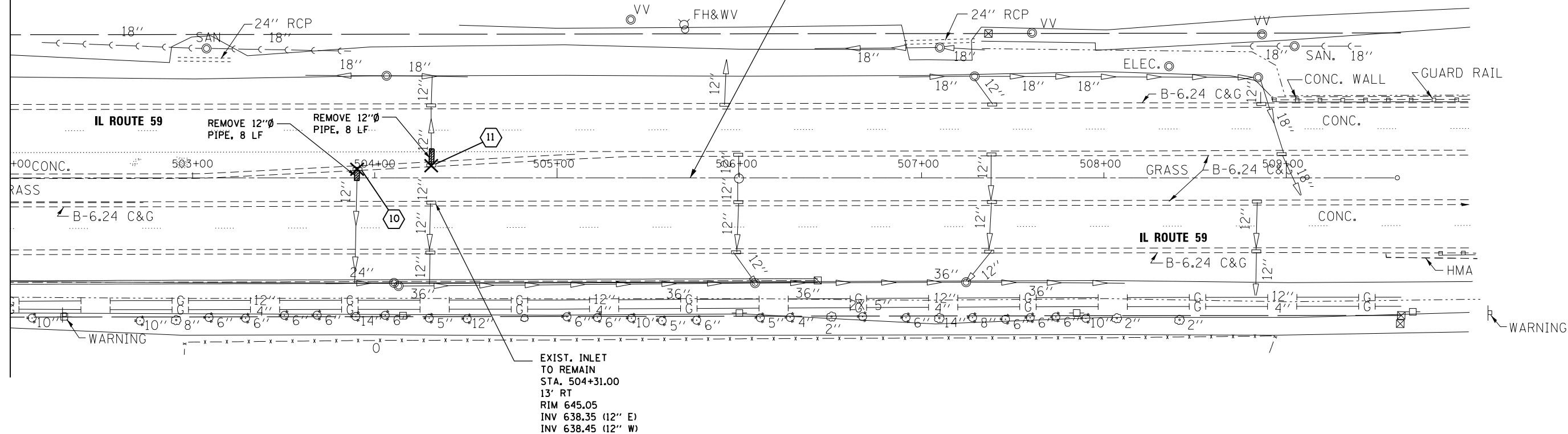
- 10 EXIST. INLET TO BE REMOVED
STA. 503+90.00
4' LT
RIM 645.11
INV 641.81 (12" E)
- 11 EXIST. INLET TO BE REMOVED
STA. 504+31.00
6' LT
RIM 644.93
INV 641.63 (12" W)

- LEGEND:**
- EXISTING DRAINAGE PIPE TO BE REMOVED
 - EXISTING DRAINAGE STRUCTURE TO BE REMOVED

**PROJECT ENDS
STA. 505+73.00**

NOTE:
AFTER REMOVING THE DRAINAGE STRUCTURES AS SHOWN ON THE PLANS, THE CONTRACTOR SHALL MATCH THE EXISTING PIPE INVERT ELEVATIONS TO ENSURE THE PROPER DRAINAGE IS MAINTAINED.

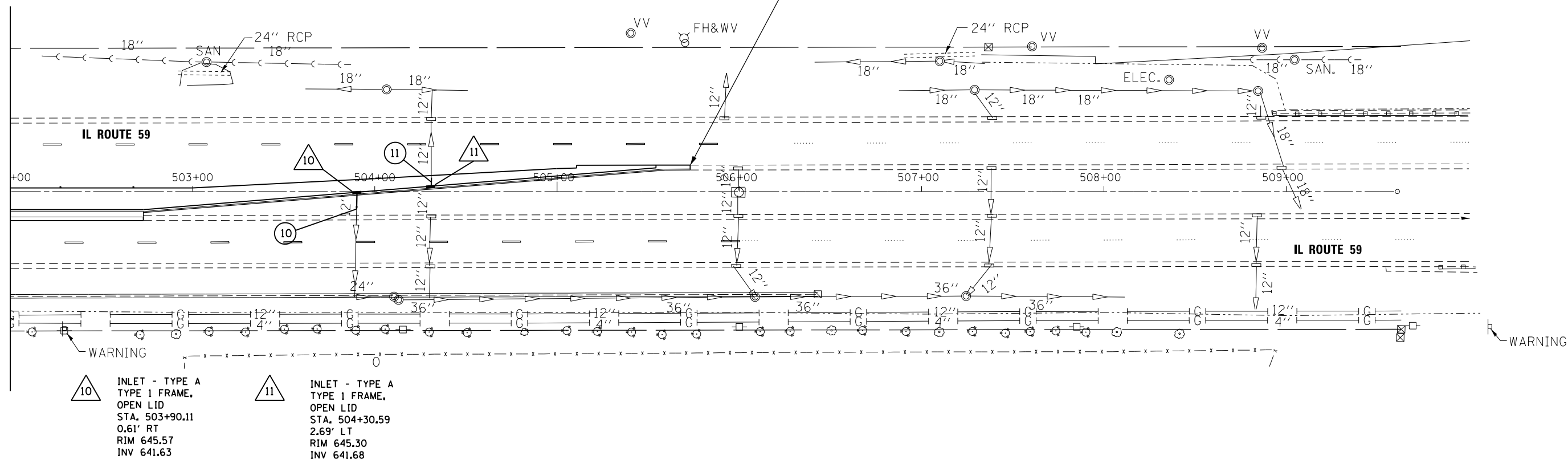
MATCH LINE STA. 502+00
SEE SHEET 19



- 10 8' - 12" STORM SEWER CLASS A, TYPE 2 @ 1.0% 1.50 CY TBF
- 11 8' - 12" STORM SEWER CLASS A, TYPE 2 @ 1.0% 1.50 CY TBF

**PROJECT ENDS
STA. 505+73.00**

MATCH LINE STA. 502+00
SEE SHEET 19



- 10 INLET - TYPE A TYPE 1 FRAME, OPEN LID
STA. 503+90.11
0.61' RT
RIM 645.57
INV 641.63
- 11 INLET - TYPE A TYPE 1 FRAME, OPEN LID
STA. 504+30.59
2.69' LT
RIM 645.30
INV 641.68

FILE NAME = \$FILEL\$

USER NAME = mm11er	DESIGNED - BFH	REVISED -
PLOT SCALE = 60.0000' / in.	DRAWN - BFH	REVISED -
PLOT DATE = 3/21/2013	CHECKED - BA	REVISED -
	DATE - 3/19/13	REVISED -

**STATE OF ILLINOIS
DEPARTMENT OF TRANSPORTATION**

EXISTING UTILITIES AND PROPOSED DRAINAGE

SCALE: 1"=30' SHEET 3 OF 3 SHEETS STA. 502+00 TO STA. 505+73

F.A. RTE.	SECTION	COUNTY	TOTAL SHEETS	SHEET NO.
338	(113R-2N)	WILL	38	20
CONTRACT NO. 60T95				
ILLINOIS FED. AID PROJECT				