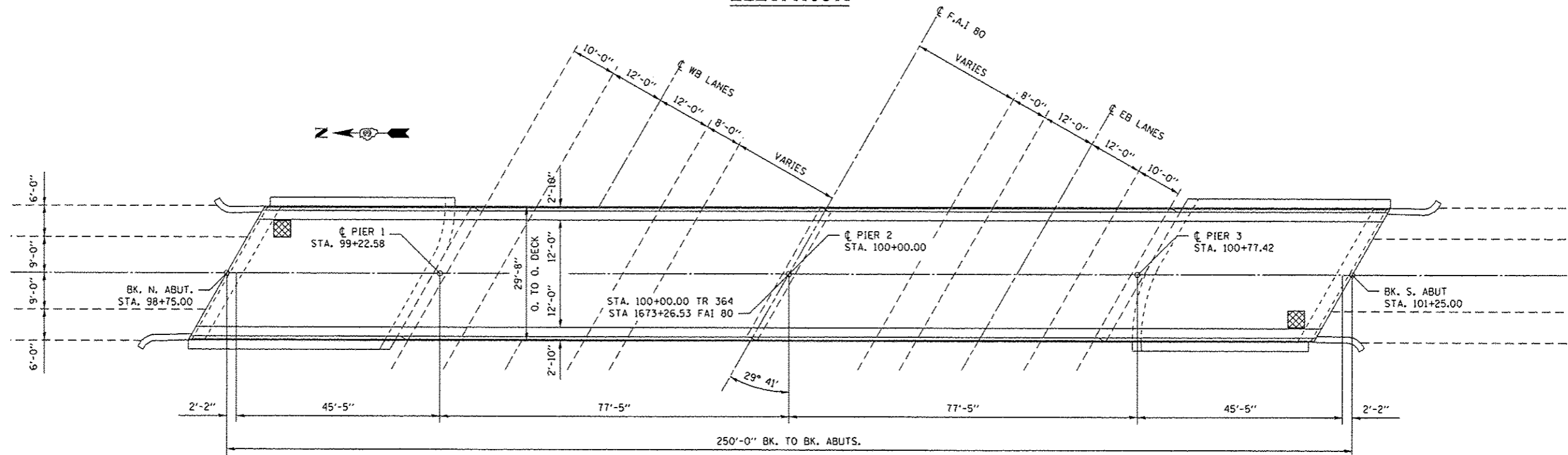
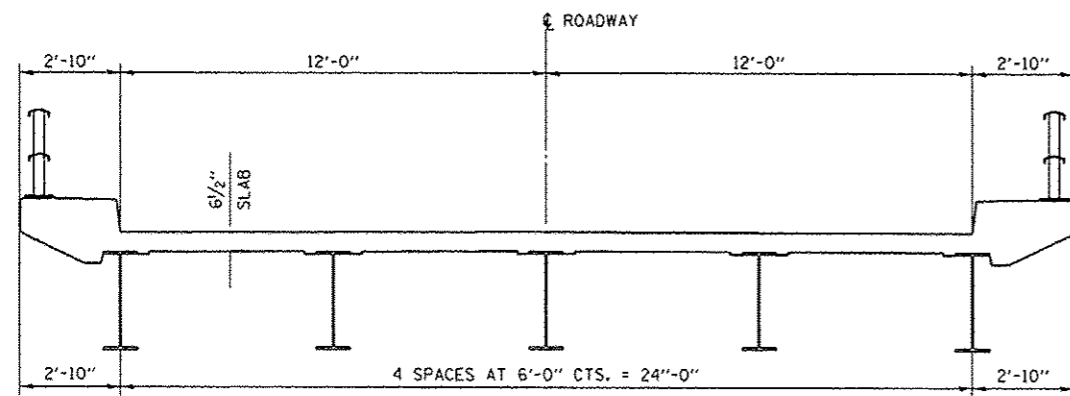


**ELEVATION**



**PLAN**



**CROSS SECTION**

AIR MONITORS

**TOTAL BILL OF MATERIAL**

ITEM	UNIT	SUPER	SUB	TOTAL
CLEANING AND PAINTING STRUCTURAL STEEL, LOCATION 1	L SUM	1		1
CONTAINMENT AND DISPOSAL OF LEAD PAINT CLEANING RESIDUES NO. 1	L SUM	1		1
BRIDGE CLEANING AND PAINTING WARRANTY NUMBER 1	L SUM	1		1
PAINTING STEEL RAILING	FOOT	500		500

**"FOR INFORMATION ONLY"**

FILE NAME =	USER NAME = spurlockd	DESIGNED - DBS	REVISED -
cr:\pw\work\p\ridot\spurlockd\0332621\0366087-sht\details.dgn		DRAWN - DBS	REVISED -
Default	PLOT SCALE = 100.0000' / 1"	CHECKED -	REVISED -
	PLOT DATE = 3/26/2013	DATE - MAR 2013	REVISED -

STATE OF ILLINOIS  
DEPARTMENT OF TRANSPORTATION

GENERAL PLAN AND ELEVATION  
FOR STRUCTURE NO. 006-0129

SCALE: NONE SHEET 1 OF 3 SHEETS STA. TO STA.

F.A.I. RTE.	SECTION	COUNTY	TOTAL SHEETS	SHEET NO.
80	106-7HB/BP	BUREAU	9	7
CONTRACT NO. 66C87			ILLINOIS FED. AID PROJECT	